



ORGANIZATIONAL CHART & TELEPHONE DIRECTORY

This directory is designed to:

1. Give users direct access to the Department's top-level management and supervisory personnel, and
2. To see where the managers and supervisors fit into the Department's chain-of-command structure.

FOR AUTOMATED INSPECTION REQUESTS ONLY,
YOU MAY CALL TOLL FREE FROM ANYWHERE
IN LOS ANGELES COUNTY:

1-888-524-2845

OR

OUTSIDE LOS ANGELES COUNTY

213-482-0000

TDD Line 888-833-8389

FOR ALL OTHER SERVICES OR INFORMATION WITHIN
THE CITY OF LOS ANGELES

3-1-1

OR

OUTSIDE LOS ANGELES CITY

1-213-473-3231

For more information regarding the Los Angeles Department of Building and Safety, please visit www.ladbs.org.

TELEPHONE DIRECTORY INDEX

DEPARTMENT OF BUILDING AND SAFETY

Executive and Bureau Management	Chart 1
Government and Community Relations Division.....	Chart 2
Development Services Case Management Division	
Case Management.....	Chart 3
Preliminary Review.....	Chart 3
Personnel Services.....	Chart 4

PERMIT AND ENGINEERING BUREAU

Permit and Engineering Bureau Management	Chart 5
Structural Plan Check Division	
Metro and ePlan Check	Chart 6
Van Nuys District Office	Chart 6
West LA District Office	Chart 6
High-Rise, Seismic Retrofit and LAX Projects Division	
Soft-Story Retrofit Program	Chart 7
High-Rise and Non-Ductile Concrete Buildings.....	Chart 7
LAX	Chart 7
Structural Plan Check Counter Division	
Metro Plan Check	Chart 8
South LA District Office	Chart 8
Van Nuys District Office	Chart 8
West LA District Office	Chart 8
San Pedro District Office	Chart 8
Concierge Services	Chart 8
Green/Electrical/Mechanical (GEM) Plan Check Division	
Green Building Plan Check / Inspection.....	Chart 9
Mechanical Plan Check and Test Lab	Chart 9
Electrical Plan Check and Test Lab	Chart 9

INSPECTION BUREAU

Commercial Building Inspection	Chart 10
Elevator and Pressure Vessel.....	Chart 10
Commercial Inspection	Chart 11
Plumbing, Heating and Fire Sprinkler / Electrical	
Residential Inspection.....	Chart 12
Metro / Van Nuys / West LA / San Pedro	
Grading Engineering and Inspection.....	Chart 12
Training and Emergency Management Division	Chart 12

CODE ENFORCEMENT BUREAU

Citywide Signs Code Enforcement	Chart 13
General Enforcement and Annual Inspection Monitoring.....	Chart 13
Citywide Pro-Active Code Enforcement.....	Chart 13
Citywide Vacant Building Abatement and Foreclosure Registry Program	Chart 13
Environmental Affairs Division, Local Enforcement Agency.....	Chart 14

RESOURCE MANAGEMENT BUREAU

Budget and General Administrative Services Division	Chart 15
Contracts and Application Services Division.....	Chart 15
Records Management Division	Chart 15
Financial Services Division	Chart 15

TECHNOLOGY SERVICES BUREAU

Customer Engagement Division	Chart 16
Application Services Division	Chart 16
Operations and Infrastructure Division.....	Chart 16
Administration Division	Chart 16

DEPARTMENT OF BUILDING AND SAFETY

Chart 1

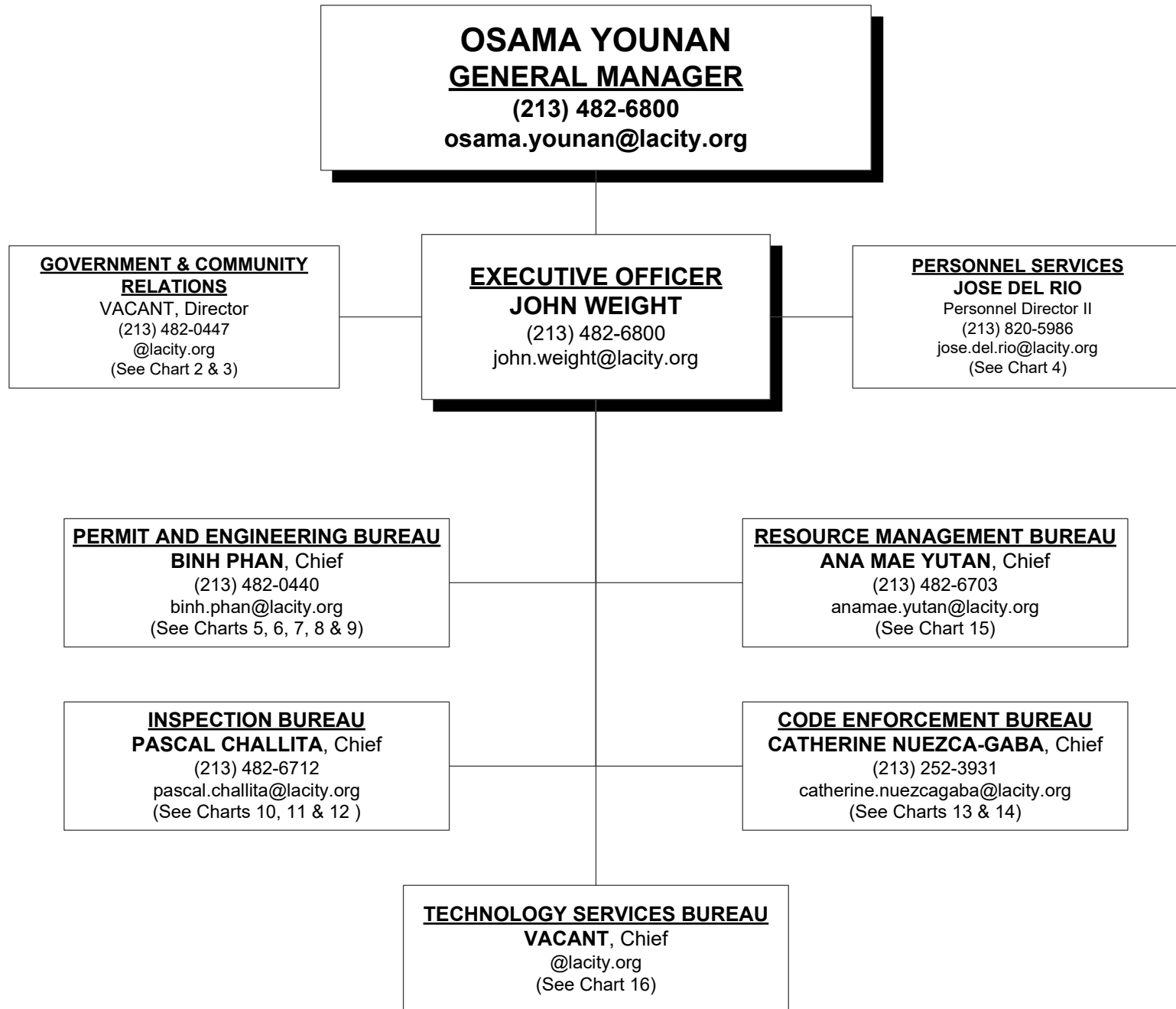


Chart 2

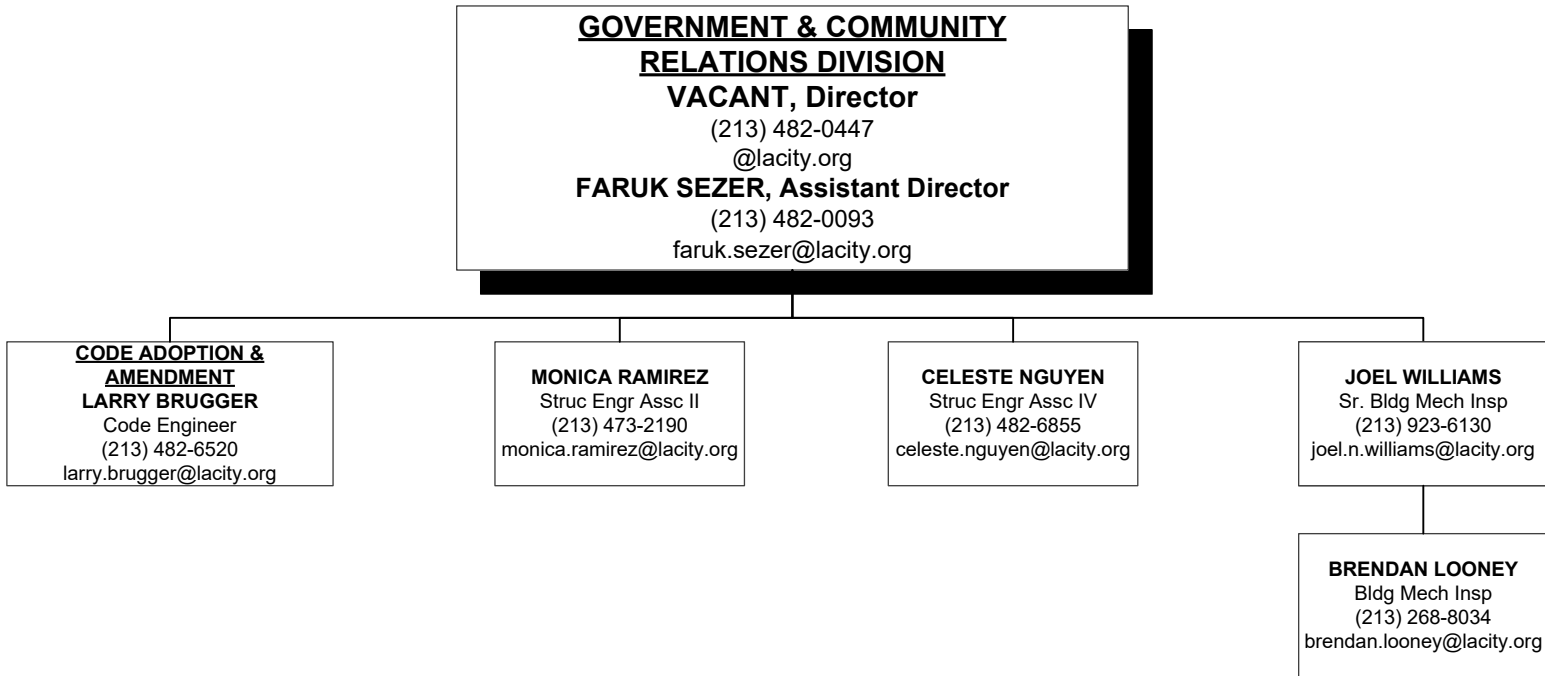


Chart 3

**DEVELOPMENT SERVICES CASE MANAGEMENT/
CODE STUDIES/BOARD/COMMUNICATIONS**
VACANT, Director
Asst Dep Sup of Bldg II
(213) 482-0447
@lacity.org

**DEVELOPMENT SERVICES CASE
MANAGEMENT**
MINYE PAK
Sr. Structural Engineer
(213) 482-6877
minye.pak@lacity.org

FARUK SEZER
Assistant Director
(213) 482-0093
faruk.sezer@lacity.org

**SUB-DIVISION & ZONING
LETTERS**
Laura Duong
Struc Engr Assc IV
(213) 482-0434
laura.duong@lacity.org

PRELIMINARY REVIEW
**Restaurant & Small Business
Express Program (RSBEP)**
Salvador Quintanilla
Struc Engr Assc II
(213) 482-0471
salvador.quintanilla@lacity.org

All Others
Mina Habib
Struc Engr Assc II
(213) 482-0446
mina.habib@lacity.org

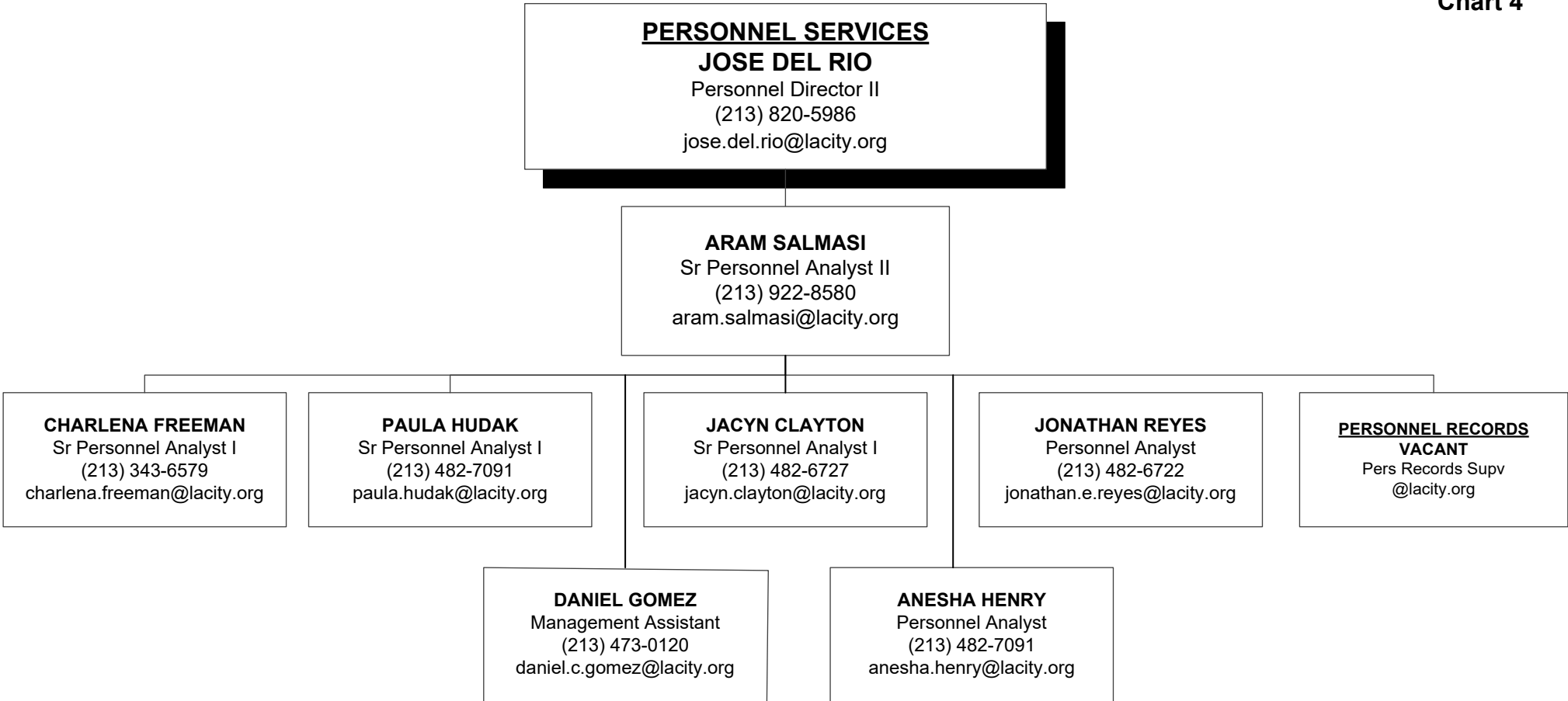
CASE MANAGEMENT
ARMEN JIVALAGIAN
Struc Engr Assc IV
(213) 482-6870
armen.jivalagian@lacity.org

**BOARD OF BUILDING & SAFETY/
DISABLED ACCESS APPEALS
COMMISSION OFFICE**
VERONICA LOPEZ
Board Secretary
Struc Engr Assc IV
(213) 482-7429
veronica.lopez@lacity.org

COMMUNICATIONS
GAIL GADDI
Public Information Director
(213) 887-6962
ladbs-media@lacity.org
gail.gaddi@lacity.org

CUSTODIAN OF RECORDS
VACANT
Management Analyst
@lacity.org

Chart 4



PERMIT AND ENGINEERING BUREAU

BINH PHAN, Chief

(213) 482-0440

binh.phan@lacity.org

**GREEN/ELECTRICAL/
MECHANICAL DIVISION**
ADEL SALAH EDDINE, Chief
Asst Dep Sup of Bldg II
(213) 482-0053
adel.salah-eddine@lacity.org
See Chart 9

**STRUCTURAL PLAN CHECK
DIVISION**
ALLEN MANALANSAN, Chief
Asst Dep Sup of Bldg II
(213) 482-0463
allen.manalansan@lacity.org
See Chart 6

**HIGH-RISE, SEISMIC
RETROFIT AND LAX
PROJECTS DIVISION**
CHARMIE HUNYH, Chief
Asst Dep Sup of Bldg II
(213) 482-0440
charmie.huynh@lacity.org
See Chart 7

**STRUCTURAL PLAN CHECK
COUNTER DIVISION**
SHAHEN AKELYAN, Chief
Asst Dep Sup of Bldg II
(213) 482-0440
shahen.akelyan@lacity.org
See Chart 8

Chart 6

PERMIT AND ENGINEERING BUREAU
BINH PHAN, Chief
(213) 482-0440
binh.phan@lacity.org

STRUCTURAL PLAN CHECK DIVISION
ALLEN MANALANSAN, Chief
Asst Dep Sup of Bldg II
(213) 482-0463
allen.manalansan@lacity.org

AFFORDABLE HOUSING SECTION/BUILDING RESEARCH
EUGENE BARBEAU
Bldg Civil Engr II
(213) 978-4454
eugene.barbeau@lacity.org

RUDY ARIAS
Bldg Civil Engr I
(213) 202-9903
rodolfo.arias@lacity.org

METRO STRUCTURAL PLAN CHECK
CHAD DOI
Bldg Civil Engr II
(213) 482-0453
chad.doi@lacity.org

STRUCTURAL PLAN CHECK/ DISABLED ACCESS
CAROLYNN NEPOMUCENO
Bldg Civil Engr I
(323) 350-6792
carolynn.nepomuceno@lacity.org

VACANT
Bldg Civil Engr I
@lacity.org

METRO STRUCTURAL PLAN CHECK/ePLAN
MICHAEL PEREZ
Bldg Civil Engr II
(213) 482-0432
michael.x.perez@lacity.org

JOHN FRANCIA
Bldg Civil Engr I
(213) 202-5406
john.francia@lacity.org

VAN NUYS STRUCTURAL PLAN CHECK
JASON HEALEY
Bldg Civil Engr II
(818) 374-4373
jason.healey@lacity.org

STEVEN KIM
Bldg Civil Engr I
(818) 374-4325
steven.kim@lacity.org

VACANT
Bldg Civil Engr I
@lacity.org

VAN NUYS STRUCTURAL PLAN CHECK
NICKAN HEDAYAT
Bldg Civil Engr II
(818) 374-4389
omid.hedayat@lacity.org

WEST LA STRUCTURAL PLAN CHECK
CHI HARU SUZUKI
Bldg Civil Engr II
(310) 575-8080
chiharu.suzuki@lacity.org

Chart 7

PERMIT AND ENGINEERING BUREAU
BINH PHAN, Chief
 (213) 482-0440
 binh.phan@lacity.org

HIGH-RISE, SEISMIC RETROFIT AND LAX PROJECTS DIVISION
CHARMIE HUYNH, Chief
 Asst Dep Sup of Bldg II
 (213) 482-6875
 charmie.huynh@lacity.org

HIGH-RISE AND SEISMIC RETROFIT
CHARLES CHANG
 Sr Structural Engineer
 (213) 202-9815
 charles.chang@lacity.org

LAX PROJECTS
LILY TENG
 Building Civil Engineer II
 (213) 482-6871
 lily.teng@lacity.org

HIGH RISE & NON-DEDUCTILE
DANIEL CHAN
 Structural Engineer
 (213) 202-3101
 daniel.chan@lacity.org

HIGH RISE & NON-DEDUCTILE
HAMID REZAEI
 Structural Engineer
 (213) 482-7065
 hamid.rezaei@lacity.org

SOFT STORY
ANDREW SANTIAGO
 Structural Engineering
 Associate III
 (213) 202-2691
 andrew.h.santiago@lacity.org

Permit and Engineering Coordinators
EDUARDO RODRIGUEZ, Struc Eng Assc IV
 (213) 473-2147 -
 eduardo.rodriguez@lacity.org
MARK WANG, Mech Eng Assc III
 (213) 482-0439 - mark.wang@lacity.org
MEHDI ZANDI, Elec Eng Assc IV
 (213) 482-7114 - mehdi.zandi@lacity.org

Inspection Coordinators*
NICK LAROCCA, Sr Build Inspector
 (213) 473-2153 - nick.larocca@lacity.org
JOHN DESPARD, Sr Electrical Inspector
 (213) 473-2150 - john.despard@lacity.org
VACANT, Sr HVAC Inspector

JESSE BARBOZA, Sr Plumbing Inspector
 (213) 473-2151 - jesse.barboza@lacity.org
GUADALUPE TOLEDO, Fire Sprinkler Inspector
 (213) 473-2143 -
 guadalupe.toledo@lacity.org

*Reporting to Inspection Bureau

PERMIT AND ENGINEERING BUREAU

BINH PHAN, Chief

(213) 482-0440

binh.phan@lacity.org

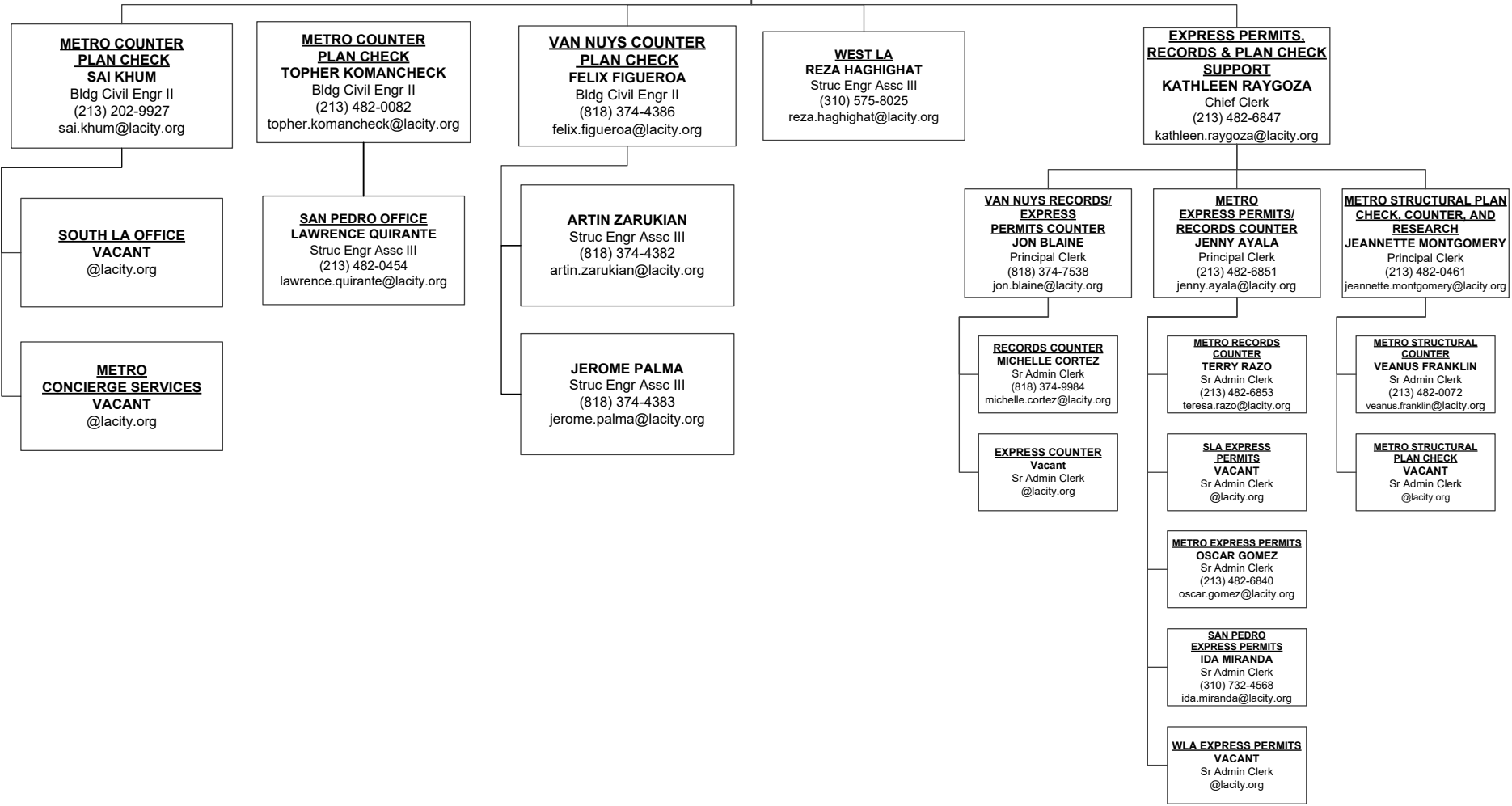
STRUCTURAL PLAN CHECK COUNTER DIVISION

SHAHEN AKELYAN, Chief

Asst Dep Sup of Bldg II

(213) 482-0440

shahen.akelyan@lacity.org



PERMIT AND ENGINEERING BUREAU

BINH PHAN, Chief

(213) 482-0440

binh.phan@lacity.org

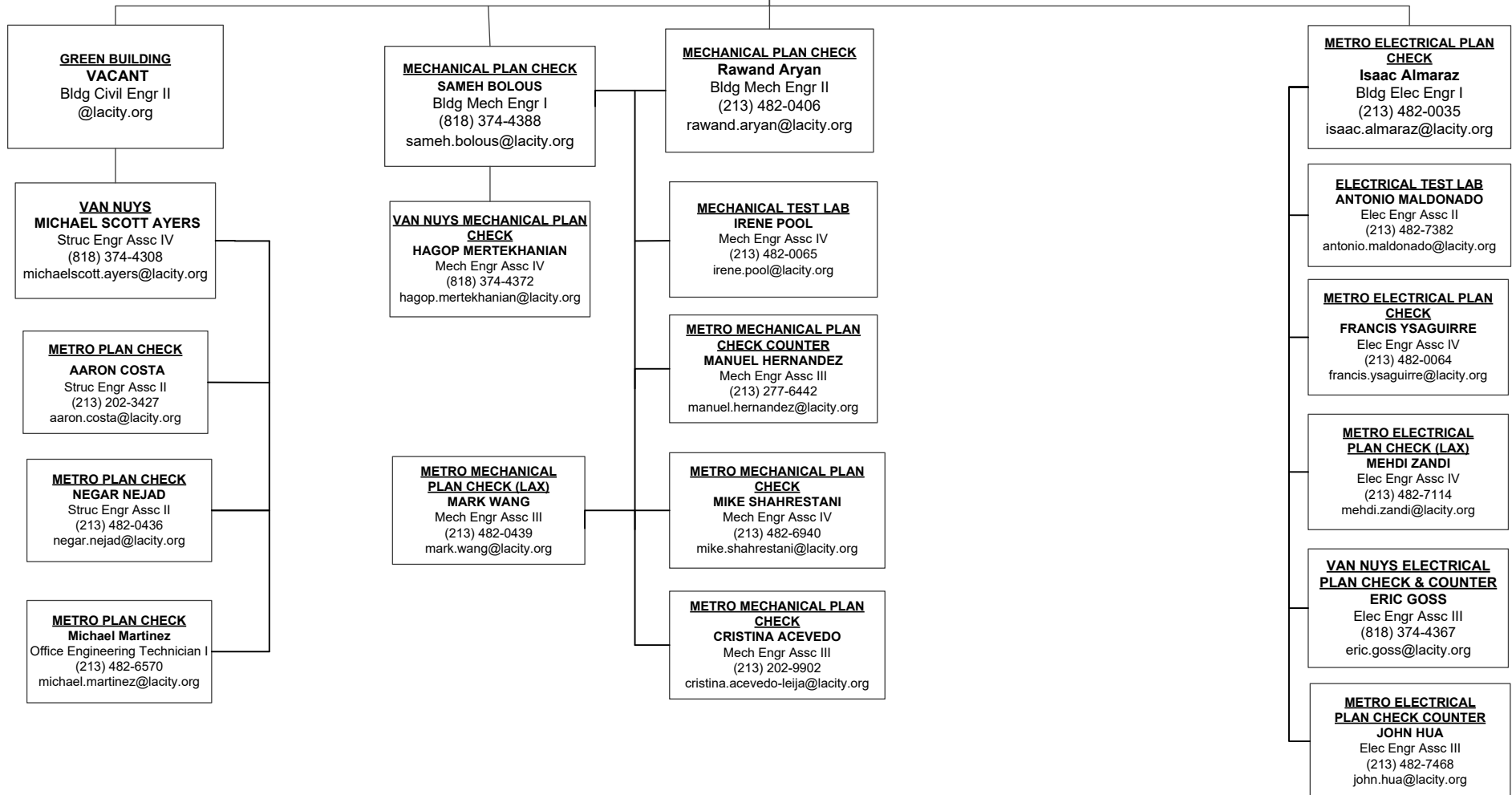
GREEN, ELECTRICAL & MECHANICAL DIVISION

ADEL SALAH EDDINE, Chief

Asst Dep Sup of Bldg II

(213) 482-0053

adel.salah-eddine@lacity.org



INSPECTION BUREAU
PASCAL CHALLITA, Chief
 (213) 482-6712
 pascal.challita@lacity.org
DENVER (SHAWN) HARGIS, Assistant Chief
 (213) 482-0342
 denver.hargis@lacity.org

KAITLIN MILLS
 Secretary
 (213) 482-7212
 kaitlin.mills@lacity.org

BUILDING INSPECTION/INSPECTION CASE MANAGEMENT (ICM)/ RESTAURANT & SMALL BUSINESS EXPRESS PROGRAM (RSBEP)
YERVAND CHAPANYAN
 Chief Inspector
 (213) 482-0492
 yervand.chapanyan@lacity.org

TRADE LICENSING SECTION
CRYSTAL HERNANDEZ
 Principal Clerk
 (213) 482-0315
 crystal.hernandez@lacity.org

ELEVATOR/PRESSURE VESSEL INSPECTION
JAMES GARRISON
 Chief Inspector
 (213) 202-3467
 jim.garrison@lacity.org

MATERIALS CONTROL
TED RIES
 Principal Inspector
 (213) 202-9856
 ted.ries@lacity.org

BUILDING INSPECTION METRO
ADAM BURGESS
 Principal Inspector
 (213) 202-9856
 adam.burgess@lacity.org

RSBEP/ICM ADMIN SUPPORT
TATIA WADE
 Administrative Clerk
 (213) 482-0464
 tatia.wade@lacity.org

ELEVATOR INSPECTION
LARRY ISIDRO
 Principal Inspector
 (213) 202-9830
 larry.isidro@lacity.org

SPECIAL EVENTS/TENT INSPECTIONS
FELIX CEBALLOS
 Build Inspector
 (213) 482-7359
 felix.cebillos@lacity.org

SOFT STORY INSPECTION
WINSTON DUNNING
 Sr Build Inspector
 (213) 482-0373
 winston.dunning@lacity.org

ELEVATOR INSPECTION METRO
DAVID JENNINGS
 Sr Safety Eng Elev
 (213) 202-9832
 david.jennings@lacity.org

PRESSURE VESSEL INSPECTION CODE DESK METRO
JUAN CARLOS CHAVEZ
 Sr Safety Eng Press Ves
 (213) 202-9852
 juancarlos.chavez@lacity.org

CERTIFIED LICENSED CONTRACTOR (CLC)/ CERTIFIED WELDERS
TIM DAY
 Sr Build Inspector
 (213) 482-0383
 tim.day@lacity.org

BUILDING INSPECTION VAN NUYS
RICKEY JACKSON
 Principal Inspector
 (818) 374-1104
 rickey.jackson@lacity.org

ELEVATOR INSPECTION VN
JIMMIE GRABATIN
 Sr Safety Eng Elev
 (818) 374-1139
 jim.grabatin@lacity.org

PRESSURE VESSEL INSPECTION CODE DESK VN
RENATO FABIAN
 Sr Safety Eng Press Ves
 (818) 374-1149
 renato.fabian@lacity.org

BUILDING INSPECTION WEST LA
HENRY BAGHDASSARIAN
 Principal Inspector
 (310) 914-3905
 henry.baghdassarian@lacity.org

ELEVATOR INSPECTION WLA
VACANT
 Sr Safety Eng Elev
 @lacity.org

PRESSURE VESSEL INSPECTION CODE DESK WLA
VACANT
 Sr Safety Eng Press Ves
 @lacity.org

BUILDING INSPECTION SAN PEDRO
DAVID TSAU
 Sr Build Inspector
 (213) 914-3917
 david.tsau@lacity.org

ELEVATOR CODE INFORMATION & APPOINTMENTS
 (213) 202-9844
 Fax (213) 202-9922

BUILDING INSPECTION LAX
NICK LAROCCA
 Sr Build Inspector
 (213) 923-6121
 nick.larocca@lacity.org

INSPECTION BUREAU
PASCAL CHALLITA, Chief
 (213) 482-6712
 pascal.challita@lacity.org
DENVER (SHAWN) HARGIS, Assistant Chief
 (213) 482-0342
 denver.hargis@lacity.org

KAITLIN MILLS
 Secretary
 (213) 482-7212
 kaitlin.mills@lacity.org

**PLUMBING/HEATING AND
 FIRE SPRINKLER INSPECTION**
STEVE KIMBLE
 Chief Inspector
 (213) 482-6787
 steven.kimble@lacity.org

ELECTRICAL INSPECTION
WILLIAM MITCHELL
 Chief Inspector
 (213) 202-9906
 william.mitchell@lacity.org

**PLUMBING/HEATING/FIRE
 SPRINKLER INSPECTION**
JONATHAN ALLEN
 Principal Inspector
 (213) 482-0354
 jonathan.allen@lacity.org

**PLUMBING/HEATING/FIRE
 SPRINKLER INSPECTION**
KEVIN SIMONDS
 Principal Inspector
 (213) 482-7207
 kevin.simonds@lacity.org

ELECTRICAL INSPECTION
DEXTER JACKSON
 Principal Inspector
 (213) 482-0377
 dexter.jackson@lacity.org

ELECTRICAL INSPECTION
DAVID HAENDLE
 Principal Inspector
 (213) 482-0302
 david.haendle@lacity.org

METRO
JAMES JENSEN, Sr Plumbing
 (213) 482-0420 - james.jensen@lacity.org
DAVID JOHNSON, Sr Fire Sprinkler
 (213) 202-9887 - david.p.johnson@lacity.org
VACANT, Sr HVAC
 - @lacity.org

VAN NUYS
JOSEPH NICOSIA, Sr Plumbing
 (818) 374-1141 - joseph.nicosia@lacity.org
JOSEPH TAYLOR, Sr Fire Sprinkler
 (818) 374-9935 - joseph.taylor@lacity.org
ANTHONY DE SANTIS, Sr HVAC
 (818) 374-1153 anthony.desantis@lacity.org

METRO
VACANT
 Sr Electrical Inspector
 @lacity.org

VAN NUYS
DOUG VERRAL
 Sr Electrical Inspector
 (818) 374-1136
 douglas.verral@lacity.org

WEST LA
BRANDON IVES, Sr Plumbing
 (310) 914-3949 - brandon.ives@lacity.org
JOHN BARTON, Sr Fire Sprinkler
 (310) 914-3955 - john.barton@lacity.org
KEVIN KIDD, Sr HVAC
 (310) 914-3961 - kevin.kidd@lacity.org

SAN PEDRO
BRANDON IVES
 Sr Plumbing Inspector
 (310) 914-3949
 brandon.ives@lacity.org

WEST LA
MIKE TILK
 Sr Electrical Inspector
 (310) 914-3938
 michael.tilk@lacity.org

SAN PEDRO
VACANT
 Sr Electrical Inspector
 @lacity.org

PLUMBING CODE INFORMATION
 (213) 482-0061
 Fax (213) 482-7410

LAX
GUADALUPE TOLEDO, Fire Sprinkler
 (213) 473-2143 - guadalupe.toledo@lacity.org
JESSE BARBOZA, Sr Plumbing
 (213) 473-2151 - jesse.barboza@lacity.org
CHRIS NORRIS, Sr HVAC
 (213) 473-2142 - christopher.norris@lacity.org

ELECTRICAL CODE INFORMATION
VACANT
 Sr Electrical Inspector
 @lacity.org

LAX
JOHN DESPARD
 Sr Electrical Inspector
 (213) 216-7449
 john.despard@lacity.org

INSPECTION BUREAU
PASCAL CHALLITA, Chief
(213) 482-6712
pascal.challita@lacity.org
VICTOR CUEVAS, Assistant Chief
(213) 202-9869
victor.cuevas@lacity.org

KAITLIN MILLS
Secretary
(213) 482-7212
kaitlin.mills@lacity.org

RESIDENTIAL INSPECTION
RONALD MYRICK
Chief Inspector
(213) 202-3469
ronald.myrick@lacity.org

GRADING
J. ADOLFO ACOSTA
Geotechnical Engineer III
(213) 482-6967
jesus.acosta@lacity.org

TRAINING AND EMERGENCY MANAGEMENT
LISA YANCEY
Chief Inspector
(213) 482-7097
lisa.yancey@lacity.org

ARMOND GREGORYONA
Principal Inspector
(213) 482-7370
armond.gregoryona@lacity.org

METRO/SAN PEDRO
D. BRIAN HAUFF
Principal Inspector
(213) 482-0323
derold.hauff@lacity.org

VAN NUYS
JOHN JANSON
Principal Inspector
(818) 774-4335
john.janson@lacity.org

WLA
DANIEL ORRANTE
Principal Inspector
(310) 914-3904
daniel.orrante@lacity.org

GRADING INSPECTION
SERGIO VALENZUELA
Principal Inspector
(213) 482-0397
sergio.valenzuela@lacity.org

GEOTECHNICAL ENGINEERING
YING LIU
Geotechnical Engineer II
(213) 482-0494
ying.liu@lacity.org

TRAINING

EMERG MGMT

CD #5C, 10, & #13
RUBEN SALAS
Sr Build Mech Inspector
(213) 482-6962
ruben.salas@lacity.org

CD #12
19040 Vanowen St.
VACANT
Sr Build Mech Inspector
@lacity.org

CD #5A
11620 Wilshire Blvd. #1100
MICHAEL PELHAM
Sr Build Mech Inspector
(310) 914-3908
michael.pelham@lacity.org

METRO
MICHAEL TEMPLE
Sr Build Inspector
213-482-0396
michael.temple@lacity.org

GRADING PLAN CHECK
DAN RYAN EVANGELISTA
Struc Engr Assc III
(213) 482-6810
dan.evangelista@lacity.org

ELECTRICAL
MATTHEW COTTER
Sr Electrical Inspector
(213) 482-6797
matthew.cotter@lacity.org

VACANT
Emergency Management
Coordinator
@lacity.org

VACANT
Sr Build Mech Inspector
@lacity.org

CD #7
6262 Van Nuys Blvd
ROBERT GOLD
Sr Build Mech Inspector
(818) 374-1158
robert.gold@lacity.org

CD #11
11620 Wilshire Blvd. #1100
KENNETH NAGLE
Sr Build Mech Inspector
(310) 914-3906
kenneth.nagle@lacity.org

WEST LA INSPECTION
VASIL MIHALEV
Sr Build Inspector
(310) 914-3934
vasil.mihalev@lacity.org

ENGINEERING GEOLOGY
DANIEL SCHNEIDERREIT
Engineering Geologist II
(213) 482-0430
daniel.schneiderreit@lacity.org

HVAC
KEVIN BROWN
Build Mech Inspector
(213) 482-6795
kevin.brown@lacity.org

ED GARCIA
Sr Build Mech Inspector
(213) 482-6786
edward.garcia@lacity.org

CD #1 & #14
221 N. Figueroa, 8th Fl.
CHARLES BOGHOSKHAN
Sr Build Mech Inspector
(213) 202-3445
charles.boghoskhan@lacity.org

CD #5B
6262 Van Nuys Blvd.
VACANT
Sr Build Mech Inspector
@lacity.org

CD #5D
11620 Wilshire Blvd. #1100
VACANT
Sr Build Mech Inspector
@lacity.org

VAN NUYS INSPECTION
CHARLES POWELL
Sr Build Inspector
(818) 374-4355
charles.powell@lacity.org

BUILDING
JOHN DODGE
Sr Build Inspector
(213) 326-9546
john.dodge@lacity.org

METRO/VN/WLA/SP INVESTIGATIONS
VACANT
Sr Build Inspector
@lacity.org

CD #8 & #9
221 N. Figueroa, 8th Fl.
HAL FULTZ
Sr Build Mech Inspector
(818) 374-9823
hal.fultz@lacity.org

TRACTS
19040 Vanowen St
SEAN WIRCH
Sr Build Mech Inspector
(818) 774-4354
sean.wirch@lacity.org

CD #6
11620 Wilshire Blvd. #1100
RICHARD STEINBACH
Sr Build Mech Inspector
(310) 914-3909
richard.steinbach@lacity.org

SAN PEDRO INSPECTION
VASIL MIHALEV
Sr Building Inspector
(310) 914-3934
vasil.mihalev@lacity.org

PLUMBING
ARMANDO PULIDO
Sr Plumbing Inspector
(213) 482-0346
armando.pulido@lacity.org

HIGH RISE RETROFIT/ EQ INSPECTION
VACANT
Sr Build Inspector
@lacity.org

CD #4
221 N. Figueroa, 8th Fl.
CRAIG DAVIS
Sr Build Mech Inspector
(213) 202-3261
craig.davis@lacity.org

METRO TRACTS
SCOTT FINNILA
Sr Build Mech Inspector
(213) 482-0384
scott.finnila@lacity.org

CD #2
6262 Van Nuys Blvd
DAVE MATSON
Sr Build Mech Inspector
(818) 374-1159
dave.matson@lacity.org

RESIDENTIAL ZONING
ANDREW NAVE
Build Mech Inspector
(213) 482-7278
andrew.nave@lacity.org

INVESTIGATIONS
LINN MELVIN
Build Mech Inspector
(213) 482-0371
trey.melvin@lacity.org

CD #15
638 S. Beacon St.
DONALD CRICHLAW
Sr Build Mech Inspector
(213) 202-3431
donald.crichlow@lacity.org

CD #3
19040 Vanowen St.
SEAN WIRCH
Sr Build Mech Inspector
(818) 774-4354
sean.wirch@lacity.org

TRAINING COORDINATOR
VACANT
Management Analyst
@lacity.org

CODE ENFORCEMENT BUREAU
CATHERINE NUEZCA-GABA, Chief
 (213) 252-3931
 catherine.nuezcagaba@lacity.org
ERIC JAKEMAN, Assistant Chief
 (213) 252-3976
 eric.jakeman@lacity.org

FAITH MAULUPE
 Principal Clerk
 (213) 252-3376
 faith.maulupe@lacity.org

GENERAL ENFORCEMENT & SPECIALTY/SIGNS INSPECTION
JEFF NAPIER
 Chief Inspector
 (213) 263-6846
 jeff.napier@lacity.org

GENERAL ENFORCEMENT, ANNUAL INSPECTION MONITORING, PROACTIVE CODE ENFORCEMENT, & VACANT BUILDING ABATEMENT
JACK CONGER
 Chief Inspector
 (213) 252-3310
 jack.conger@lacity.org

CITYWIDE SIGNS
DANIEL SANCHEZ
 Principal Inspector
 (213) 252-3926
 daniel.sanchez@lacity.org

CENTRAL REGION GENERAL ENFORCEMENT
DANIEL SANCHEZ
 Principal Inspector
 (213) 252-3926
 daniel.sanchez@lacity.org

SOUTH REGION GENERAL ENFORCEMENT
BRUCE TODD
 Principal Inspector
 (213) 978-4502
 bruce.todd@lacity.org

CITYWIDE ANNUAL INSPECTION MONITORING
DAVID JAMES
 Principal Inspector
 (818) 374-9806
 dave.james@lacity.org

NORTH REGION GENERAL ENFORCEMENT (CODE)
DAVID JAMES
 Principal Inspector
 (818) 374-9806
 dave.james@lacity.org

CITYWIDE PACE 2 & 3
SHAWN ESHBACH
 Principal Inspector
 (213) 252-3962
 shawn.eshbach@lacity.org

CITYWIDE VBA & FORECLOSURE REGISTRY PROGRAM
SHAWN ESHBACH
 Principal Inspector
 (213) 252-3962
 shawn.eshbach@lacity.org

SIGN ENFORCEMENT
MICAH WILLIAMS
 Sr Build Mech Inspector
 (213) 252-3087
 micah.williams@lacity.org

CD #1
ROBERT MINASSIANS
 Sr Build Mech Inspector
 (213) 252-3038
 robert.minassians@lacity.org

CD #8
JAVIER RAMOS
 Sr Build Mech Inspector
 (213) 978-4504
 javier.ramos@lacity.org

NORTH REGION WILLIE ROSS
 Sr Build Mech Inspector
 (818) 374-9837
 willie.ross@lacity.org

CD #2
DAVID HICKMAN
 Sr Build Mech Inspector
 (818) 230-0288
 david.hickman@lacity.org

PRO-ACTIVE CODE ENFORCEMENT 2
VACANT
 Sr Build Mech Inspector
 @lacity.org

VACANT BUILDING ABATEMENT
PATRICK LIEBREGT
 Sr Build Mech Inspector
 (213) 252-3962
 patrick.liebrege@lacity.org

NEW CONSTRUCTION
MICAH WILLIAMS
 Sr Build Mech Inspector
 (213) 252-3087
 micah.williams@lacity.org

CD #4
HAGOP BADOSSIAN
 Sr Build Mech Inspector
 (213) 482-0469
 hagop.badossian@lacity.org

CD #9
DANIEL GONZALEZ
 Sr Build Mech Inspector
 (213) 978-4495
 daniel.a.gonzalez@lacity.org

METRO REGION JASON SUMMERS
 Sr Build Inspector
 (213) 252-3041
 jason.summers@lacity.org

CD #3
ROBERT SUNSERI
 Sr Build Mech Inspector
 (818) 374-9857
 robert.sunseri@lacity.org

PRO-ACTIVE CODE ENFORCEMENT 3
PATRICK LIEBREGT
 Sr Build Mech Inspector
 (213) 252-3962
 patrick.liebrege@lacity.org

OFF-SITE SIGNS PERIODIC INSPECTION PROGRAM
MICAH WILLIAMS
 Sr Build Mech Inspector
 (213) 252-3087
 micah.williams@lacity.org

CD #5
ROBERT CHAVEZ
 Sr Build Mech Inspector
 (213) 252-3049
 robert.chavez@lacity.org

CD #10
DONALD WONG
 Sr Build Mech Inspector
 (213) 252-3964
 donald.wong@lacity.org

CD #6
CHRIS LEKO
 Sr Build Mech Inspector
 (818) 374-9858
 christopher.leko@lacity.org

ADAPTIVE RESPONSE UNIT
MARK RUDE
 Sr Build Mech Inspector
 (213) 925-3551
 mark.rude@lacity.org

CD #13
MARK BEVELAQUA
 Sr Build Mech Inspector
 (213) 252-3977
 mark.bevelaqua@lacity.org

CD #11
JOHN MATTILLO
 Sr Build Mech Inspector
 (213) 978-4498
 john.mattillo@lacity.org

CD #7
MARK VAN SLOOTEN
 Sr Build Mech Inspector
 (818) 374-9820
 mark.vanslooten@lacity.org

CD #14
AUGUSTUS ALBAS
 Sr Build Mech Inspector
 (323) 526-9348
 augustus.albas@lacity.org

CD #15
PAUL BECKER
 Sr Build Mech Inspector
 (310) 732-4530
 paul.becker@lacity.org

CD #12
PIERRE VEGA
 Sr Build Mech Inspector
 (818) 374-9853
 pierre.vega@lacity.org

LEGAL LIAISON
DA LIU
 Sr Build Mech Inspector
 (213) 252-3393
 da.liu@lacity.org

LEGAL LIAISON
CLAUDIO MORENO
 Sr Build Mech Inspector
 (213) 978-4503
 claudio.moreno@lacity.org

LEGAL LIAISON
ALFREDO FLORES
 Sr Build Mech Inspector
 (818) 374-9859
 alfredo.flores@lacity.org

CODE ENFORCEMENT BUREAU
CATHERINE NUEZCA-GABA, Chief
(213) 252-3931
catherine.nuezcagaba@lacity.org
ERIC JAKEMAN, Assistant Chief
(213) 252-3976
eric.jakeman@lacity.org

ENVIRONMENTAL AFFAIRS DIVISION
LOCAL ENFORCEMENT AGENCY
DAVID THOMPSON
Environmental Affairs Officer
(213) 252-3932
david.thompson@lacity.org

SOUTH REGION
JOSE GUTIERREZ
Environmental Supervisor II
(213) 252-3348
jose.gutierrez@lacity.org

NORTH REGION
MEGAN LEE
Environmental Supervisor I
(213) 252-3344
megan.lee@lacity.org

HEALTH, SAFETY & ADMINISTRATION
ANDY KAO
Industrial Hygienist
(213) 252-3967
andy.kao@lacity.org

RESOURCE MANAGEMENT BUREAU

ANA MAE YUTAN, Chief

(213) 482-6703

anamae.yutan@lacity.org

EMILIO RODRIGUEZ

Assistant Chief

Chief Mgmt Analyst

(213) 482-6818

emilio.rodriguez@lacity.org

EMILY PINEDA

Administrative Clerk

emily.pineda@lacity.org

CHERYL HASS

Assistant Chief

Acting Dept Chief Accountant

(213) 482-7318

cheryl.hass@lacity.org

BUDGET & GENERAL ADMINISTRATIVE SERVICES DIVISION

CONTRACTS AND SUPPORT SERVICES DIVISION

RECORDS MANAGEMENT DIVISION

FINANCIAL SERVICES DIVISION

TONY PELAEZ

Sr Mgmt Analyst II

(213) 482-6766

tony.pelaez@lacity.org

TIFFANY BALTAZAR

Sr Mgmt Analyst II

(213) 482-6776

tiffany.baltazar@lacity.org

CHAUNTEL MARTIN

Management Analyst

(213) 482-6560

chauntel.martin@lacity.org

EMMA PANGILINAN

Principal Accountant I

(213) 482-6802

emma.pangilinan@lacity.org

JEREMY CORONEL

Principal Accountant I

(213) 482-7347

jeremy.coronel@lacity.org

BUDGET & GENERAL ADMINISTRATIVE SERVICES MAIN LINE
LADBS.ASD@lacity.org

ANSINEE TOWNSEND

Principal Clerk

(213) 482-7345

ansinee.townsend@lacity.org

LIENS AGNES SONDERVAN-ROSENFELD

Management Analyst

(213) 482-6528

agnes.sondervan-rosenfeld@lacity.org

GENERAL ACCOUNTING LEO CANTIMBUHAN

Sr Accountant I

(213) 482-6718

leo.cantimbuhana@lacity.org

ACCOUNTS RECEIVABLE

VACANT

Sr Accountant II

(213)XXX-XXXX

@lacity.org

ACCOUNTS PAYABLE

EMILY HU

Sr Accountant II

(213) 482-6534

emily.hu@lacity.org

SUPPLIES

JOHN BOROUGH

Store Keeper II

(213) 482-6813

john.borough@lacity.org

INTERNET DOCUMENT IMAGING SYSTEM

JOSHUA BLANCHER

Sr Admin Clerk

(213) 482-7143

joshua.blancher@lacity.org

EUSA VALDEZ

Sr Admin Clerk

(213) 482-6885

eusa.valdez@lacity.org

RESIDENTIAL PROPERTY REPORTS

SUNEETA ATYAM

Sr Admin Clerk

(213) 482-6772

suneeta.atyam@lacity.org

SUBJECT SPECIALTY CALL GROUP

LORENA ESPINOZA

Sr Admin Clerk

(213) 482-6549

lorena.espinoza@lacity.org

ADMINISTRATIVE SERVICES SUPPORT

APRIL DOUGLASS-LAWSON

Sr Admin Clerk

(213) 482-6710

april.dougllass-lawson@lacity.org

PAYROLL

ANDREW BYRNE

Payroll Supervisor

(213) 482-6538

andrew.byrne@lacity.org

CASHIERING SERVICES

VICTORIA VASQUEZ

Chief Cashier

(213) 482-6953

maria victoria.vasquez@lacity.org

TECHNOLOGY SERVICES BUREAU

VACANT, Chief

@lacity.org

GREG WILCOX, Director of Systems

(213) 275-3449

greg.wilcox@lacity.org

ADMINISTRATIVE DIVISION

HANA NGO

Management Analyst
(213) 482-7441
hana.ngo@lacity.org

WEBSITE SUPPORT

DIANE STINER

Sr. Admin. Clerk
(213) 482-7421
diane.r.stiner@lacity.org

CUSTOMER ENGAGEMENT

DIVISION

MINH ONG

Build Civil Engr II
(213) 482-0029
minh.ong@lacity.org

BUSINESS ANALYSIS SERVICES

MARK CAYABYAB

Sr Sys Analyst I
(213) 482-0027
mark.cayabyab@lacity.org

SUBJECT MATTER EXPERT

SERVICES

WILL MCCONNAUGHY

Sr. Build Mech Inspector
(213) 482-0049
will.mcconnaughy@lacity.org

SOFTWARE DEVELOPMENT

DIVISION

JEANNE LY

Sr. Sys Analyst II
(213) 482-0046
jeanne.ly@lacity.org

OPERATIONS AND

INFRASTRUCTURE DIVISION

LING KE

Sr. Sys Analyst II
(213) 482-0026
ling.ke@lacity.org

OPERATIONS

ADALBERTO MARROQUIN

Systems Analyst
(213) 202-9912
adalberto.marroquin@lacity.org

CLOUD AND

INFRASTRUCTURE DIVISION

SAAD TARIQ

Sr Sys Analyst II
(213) 887-6947
saad.tariq@lacity.org

NETWORK & SECURITY

SUPPORT

SHAO YAO SAMUEL WEI

Systems Administrator I
(213) 482-0033
samuel.wei@lacity.org

DATA AND SYSTEM SUPPORT

LUEN CHAN

Data Base Architect
(213) 482-0002
luen.chan@lacity.org

APPLICATION

DEVELOPMENT DIVISION

SHANNON HAAS

Sr Sys Analyst II
(213) 482-0050
shannon.haas@lacity.org

PERMITTING SYSTEM

WEI BIN HE

Programmer Analyst V
(213) 482-0037
wei.he@lacity.org