



ORGANIZATIONAL CHART & TELEPHONE DIRECTORY

This directory is designed to:

1. Give users direct access to the Department's top-level management and supervisory personnel, and
2. To see where the managers and supervisors fit into the Department's chain-of-command structure.

FOR AUTOMATED INSPECTION REQUESTS ONLY,
YOU MAY CALL TOLL FREE FROM ANYWHERE
IN LOS ANGELES COUNTY:

1-888-524-2845

OR

OUTSIDE LOS ANGELES COUNTY

213-482-0000

TDD Line 888-833-8389

FOR ALL OTHER SERVICES OR INFORMATION WITHIN
THE CITY OF LOS ANGELES

3-1-1

OR

OUTSIDE LOS ANGELES CITY

1-213-473-3231

For more information regarding the Los Angeles Department of Building and Safety, please visit www.ladbs.org.

TELEPHONE DIRECTORY INDEX

DEPARTMENT OF BUILDING AND SAFETY

Executive and Bureau Management	Chart 1
Government and Community Relations Division.....	Chart 2
Development Services Case Management Division	
Case Management.....	Chart 3
Preliminary Review.....	Chart 3
Personnel Services.....	Chart 4

PERMIT AND ENGINEERING BUREAU

Permit and Engineering Bureau Management	Chart 5
Structural Plan Check Division	
Metro and ePlan Check	Chart 6
Van Nuys District Office	Chart 6
West LA District Office	Chart 6
High-Rise, Seismic Retrofit and LAX Projects Division	
Soft-Story Retrofit Program	Chart 7
High-Rise and Non-Ductile Concrete Buildings.....	Chart 7
LAX	Chart 7
Structural Plan Check Counter Division	
Metro Plan Check	Chart 8
South LA District Office	Chart 8
Van Nuys District Office	Chart 8
West LA District Office	Chart 8
San Pedro District Office	Chart 8
Concierge Services	Chart 8
Green/Electrical/Mechanical (GEM) Plan Check Division	
Green Building Plan Check / Inspection.....	Chart 9
Mechanical Plan Check and Test Lab	Chart 9
Electrical Plan Check and Test Lab	Chart 9

INSPECTION BUREAU

Commercial Building Inspection	Chart 10
Elevator and Pressure Vessel.....	Chart 10
Commercial Inspection	Chart 11
Plumbing, Heating and Fire Sprinkler / Electrical	
Residential Inspection.....	Chart 12
Metro / Van Nuys / West LA / San Pedro	
Grading Engineering and Inspection.....	Chart 12
Training and Emergency Management Division	Chart 12

CODE ENFORCEMENT BUREAU

Citywide Signs Code Enforcement	Chart 13
General Enforcement and Annual Inspection Monitoring.....	Chart 13
Citywide Pro-Active Code Enforcement.....	Chart 13
Citywide Vacant Building Abatement and Foreclosure Registry Program	Chart 13
Environmental Affairs Division, Local Enforcement Agency.....	Chart 14

RESOURCE MANAGEMENT BUREAU

Budget and General Administrative Services Division	Chart 15
Contracts and Application Services Division.....	Chart 15
Records Management Division	Chart 15
Financial Services Division	Chart 15

TECHNOLOGY SERVICES BUREAU

Customer Engagement Division	Chart 16
Application Services Division	Chart 16
Operations and Infrastructure Division.....	Chart 16
Administration Division	Chart 16

DEPARTMENT OF BUILDING AND SAFETY

Chart 1

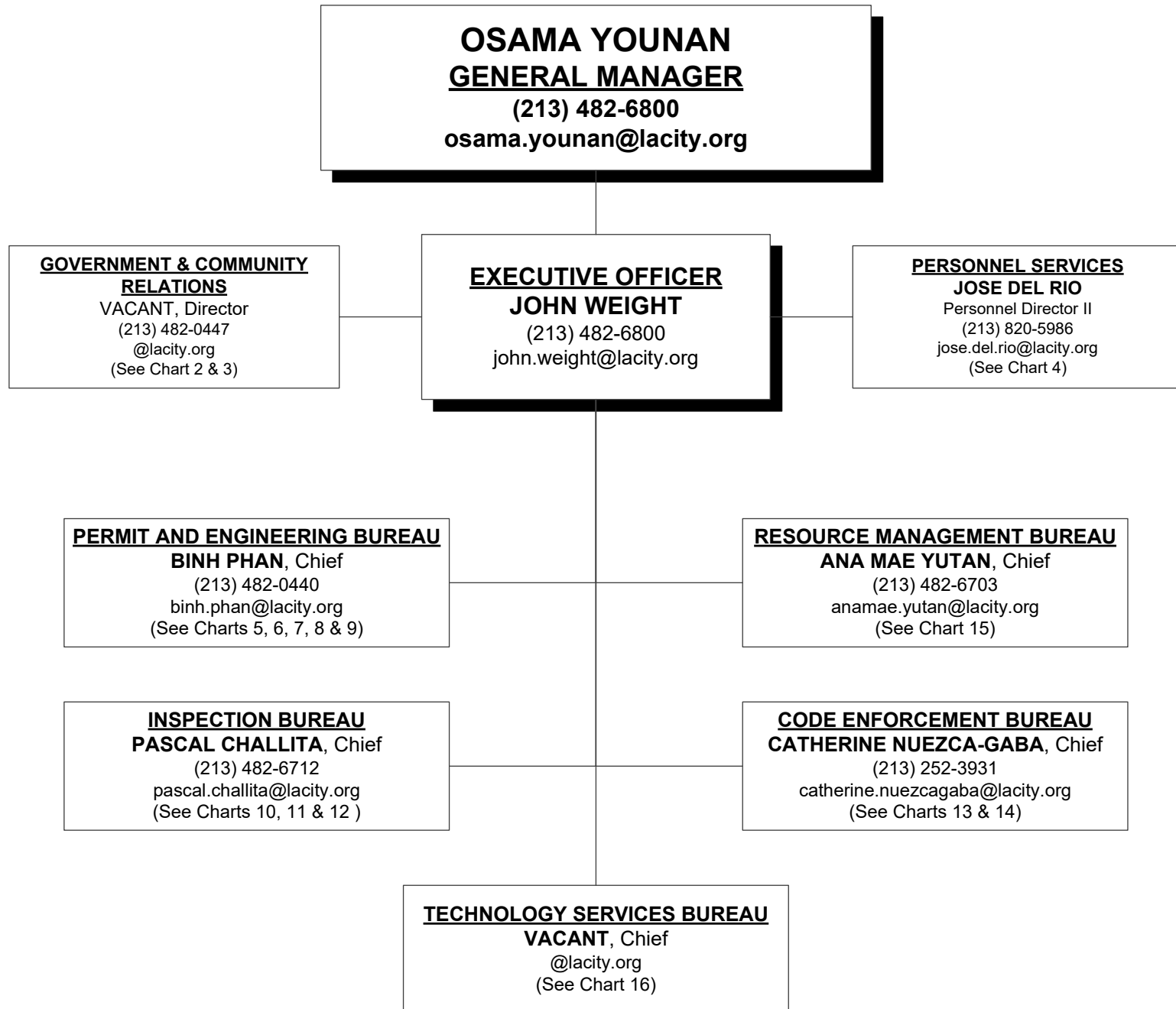


Chart 2

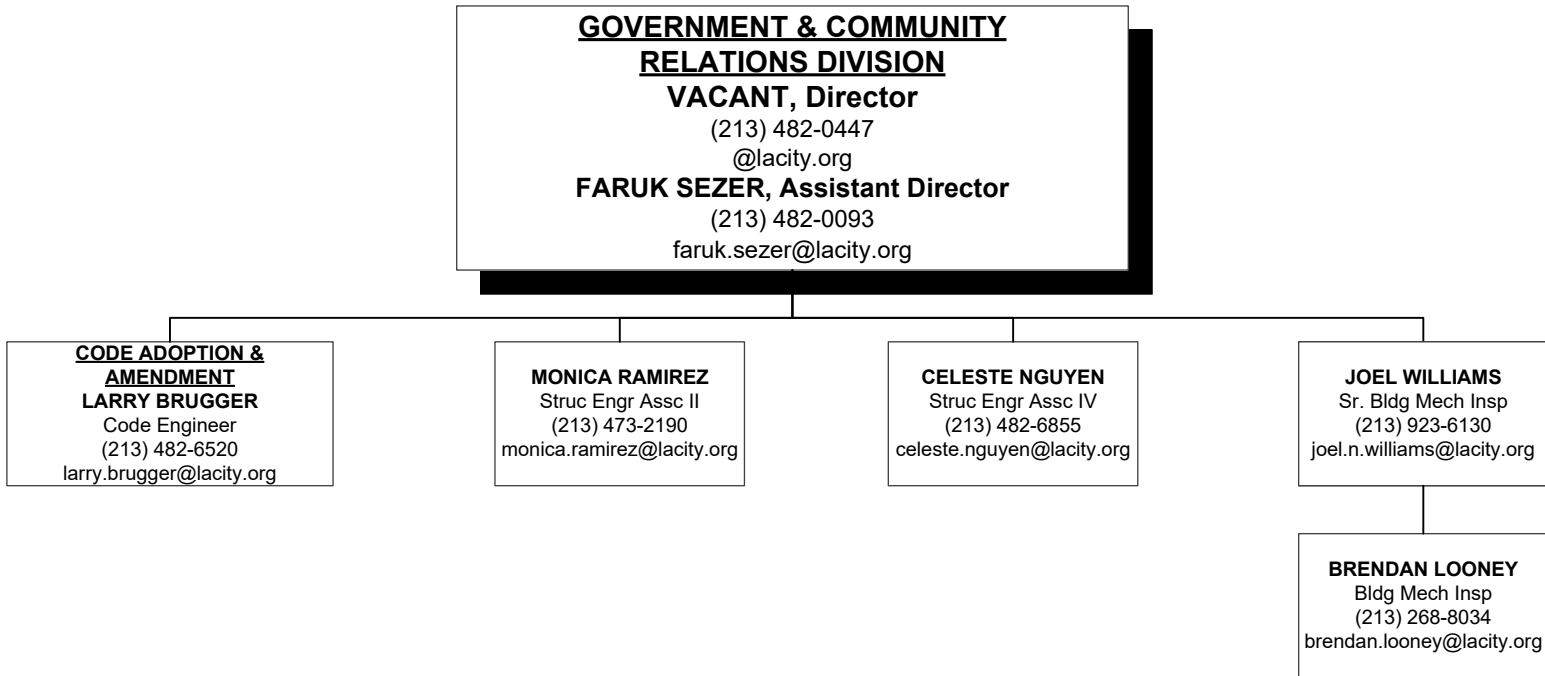


Chart 3

**DEVELOPMENT SERVICES CASE MANAGEMENT/
CODE STUDIES/BOARD/COMMUNICATIONS**
VACANT, Director
Asst Dep Sup of Bldg II
(213) 482-0447
@lacity.org

**DEVELOPMENT SERVICES CASE
MANAGEMENT**
MINYE PAK
Sr. Structural Engineer
(213) 482-6877
minye.pak@lacity.org

FARUK SEZER
Assistant Director
(213) 482-0093
faruk.sezer@lacity.org

**SUB-DIVISION & ZONING
LETTERS**
LAURA DUONG
Struc Engr Assc IV
(213) 482-0434
laura.duong@lacity.org

PRELIMINARY REVIEW
Restaurant & Small Business
Express Program (RSBEP)
Salvador Quintanilla
Struc Engr Assc II
(213) 482-0471
salvador.quintanilla@lacity.org

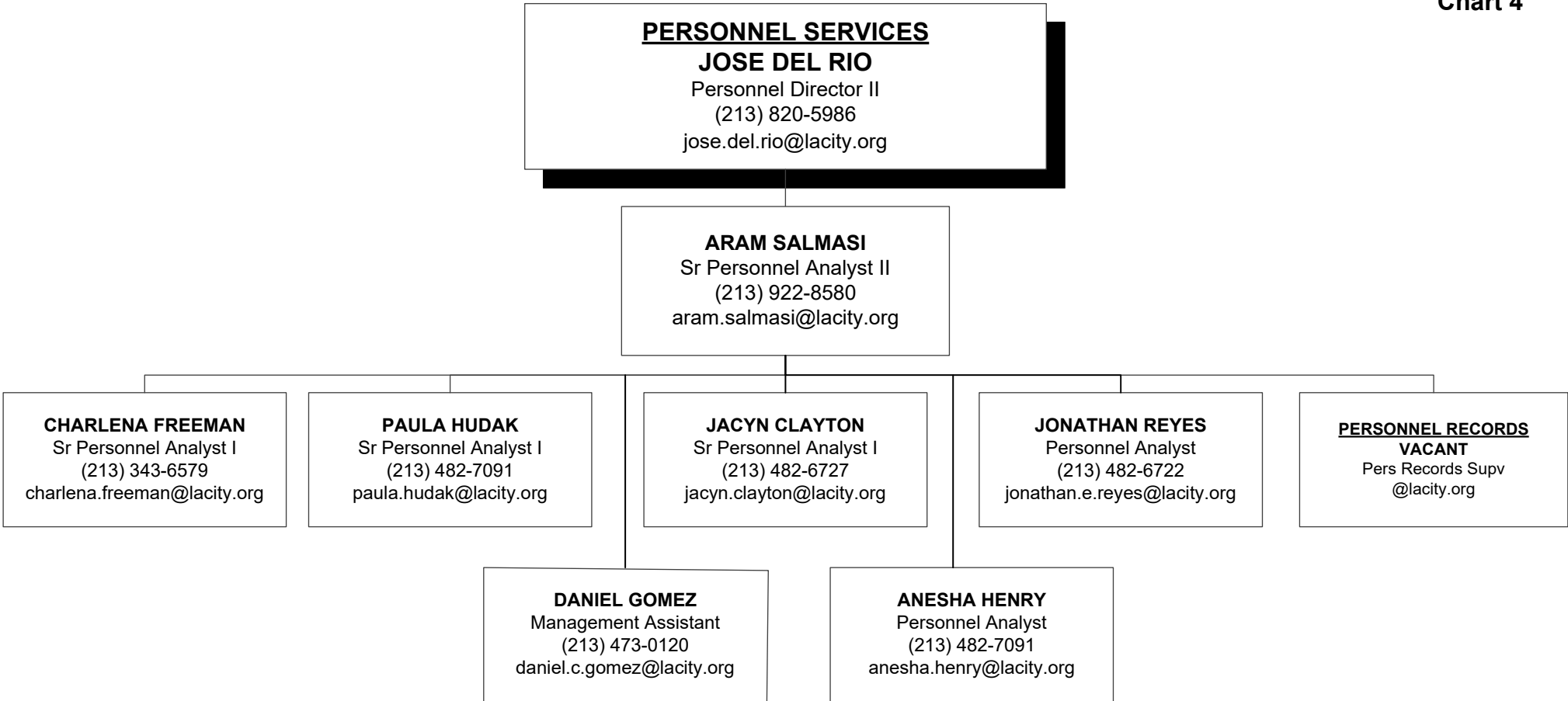
All Others
Mina Habib
Struc Engr Assc II
(213) 482-0446
mina.habib@lacity.org

CASE MANAGEMENT
ARMEN JIVALAGIAN
Struc Engr Assc IV
(213) 482-6870
armen.jivalagian@lacity.org

**BOARD OF BUILDING & SAFETY/
DISABLED ACCESS APPEALS**
COMMISSION OFFICE
VERONICA LOPEZ
Board Secretary
Struc Engr Assc IV
(213) 482-7429
veronica.lopez@lacity.org

COMMUNICATIONS
GAIL GADDI
Public Information Director
(213) 887-6962
ladbs-media@lacity.org
gail.gaddi@lacity.org

Chart 4



PERMIT AND ENGINEERING BUREAU

BINH PHAN, Chief

(213) 482-0440

binh.phan@lacity.org

**GREEN/ELECTRICAL/
MECHANICAL DIVISION**
ADEL SALAH EDDINE, Chief
Asst Dep Sup of Bldg II
(213) 482-0053
adel.salah-eddine@lacity.org
See Chart 9

**STRUCTURAL PLAN CHECK
DIVISION**
ALLEN MANALANSAN, Chief
Asst Dep Sup of Bldg II
(213) 482-0463
allen.manalansan@lacity.org
See Chart 6

**HIGH-RISE, SEISMIC
RETROFIT AND LAX
PROJECTS DIVISION**
CHARMIE HUNYH, Chief
Asst Dep Sup of Bldg II
(213) 482-0440
charmie.huynh@lacity.org
See Chart 7

**STRUCTURAL PLAN CHECK
COUNTER DIVISION**
SHAHEN AKELYAN, Chief
Asst Dep Sup of Bldg II
(213) 482-0440
shahen.akelyan@lacity.org
See Chart 8

Chart 6

PERMIT AND ENGINEERING BUREAU
BINH PHAN, Chief
(213) 482-0440
binh.phan@lacity.org

STRUCTURAL PLAN CHECK DIVISION
ALLEN MANALANSAN, Chief
Asst Dep Sup of Bldg II
(213) 482-0463
allen.manalansan@lacity.org

AFFORDABLE HOUSING SECTION/BUILDING RESEARCH
EUGENE BARBEAU
Bldg Civil Engr II
(213) 978-4454
eugene.barbeau@lacity.org

RUDY ARIAS
Bldg Civil Engr I
(213) 202-9903
rodolfo.arias@lacity.org

METRO STRUCTURAL PLAN CHECK
CHAD DOI
Bldg Civil Engr II
(213) 482-0453
chad.doi@lacity.org

STRUCTURAL PLAN CHECK/ DISABLED ACCESS
CAROLYNN NEPOMUCENO
Bldg Civil Engr I
(323) 350-6792
carolynn.nepomuceno@lacity.org

VACANT
Bldg Civil Engr I
@lacity.org

METRO STRUCTURAL PLAN CHECK/ePLAN
MICHAEL PEREZ
Bldg Civil Engr II
(213) 482-0432
michael.x.perez@lacity.org

JOHN FRANCIA
Bldg Civil Engr I
(213) 202-5406
john.francia@lacity.org

VAN NUYS STRUCTURAL PLAN CHECK
JASON HEALEY
Bldg Civil Engr II
(818) 374-4373
jason.healey@lacity.org

STEVEN KIM
Bldg Civil Engr I
(818) 374-4325
steven.kim@lacity.org

VACANT
Bldg Civil Engr I
@lacity.org

VAN NUYS STRUCTURAL PLAN CHECK
NICKAN HEDAYAT
Bldg Civil Engr II
(818) 374-4389
omid.hedayat@lacity.org

WEST LA STRUCTURAL PLAN CHECK
CHI HARU SUZUKI
Bldg Civil Engr II
(310) 575-8080
chiharu.suzuki@lacity.org

Chart 7

PERMIT AND ENGINEERING BUREAU
BINH PHAN, Chief
 (213) 482-0440
 binh.phan@lacity.org

HIGH-RISE, SEISMIC RETROFIT AND LAX PROJECTS DIVISION
CHARMIE HUYNH, Chief
 Asst Dep Sup of Bldg II
 (213) 482-6875
 charmie.huynh@lacity.org

HIGH-RISE AND SEISMIC RETROFIT
CHARLES CHANG
 Sr Structural Engineer
 (213) 202-9815
 charles.chang@lacity.org

LAX PROJECTS
LILY TENG
 Building Civil Engineer II
 (213) 482-6871
 lily.teng@lacity.org

HIGH RISE & NON-DEDUCTILE
DANIEL CHAN
 Structural Engineer
 (213) 202-3101
 daniel.chan@lacity.org

HIGH RISE & NON-DEDUCTILE
HAMID REZAEI
 Structural Engineer
 (213) 482-7065
 hamid.rezaei@lacity.org

SOFT STORY
ANDREW SANTIAGO
 Structural Engineering
 Associate III
 (213) 202-2691
 andrew.h.santiago@lacity.org

Permit and Engineering Coordinators
EDUARDO RODRIGUEZ, Struc Eng Assc IV
 (213) 473-2147 -
 eduardo.rodriguez@lacity.org
MARK WANG, Mech Eng Assc III
 (213) 482-0439 - mark.wang@lacity.org
MEHDI ZANDI, Elec Eng Assc IV
 (213) 482-7114 - mehdi.zandi@lacity.org

Inspection Coordinators*
NICK LAROCCA, Sr Build Inspector
 (213) 473-2153 - nick.larocca@lacity.org
JOHN DESPARD, Sr Electrical Inspector
 (213) 473-2150 - john.despard@lacity.org
VACANT, Sr HVAC Inspector

JESSE BARBOZA, Sr Plumbing Inspector
 (213) 473-2151 - jesse.barboza@lacity.org
GUADALUPE TOLEDO, Fire Sprinkler Inspector
 (213) 473-2143 -
 guadalupe.toledo@lacity.org

*Reporting to Inspection Bureau

PERMIT AND ENGINEERING BUREAU

BINH PHAN, Chief

(213) 482-0440

binh.phan@lacity.org

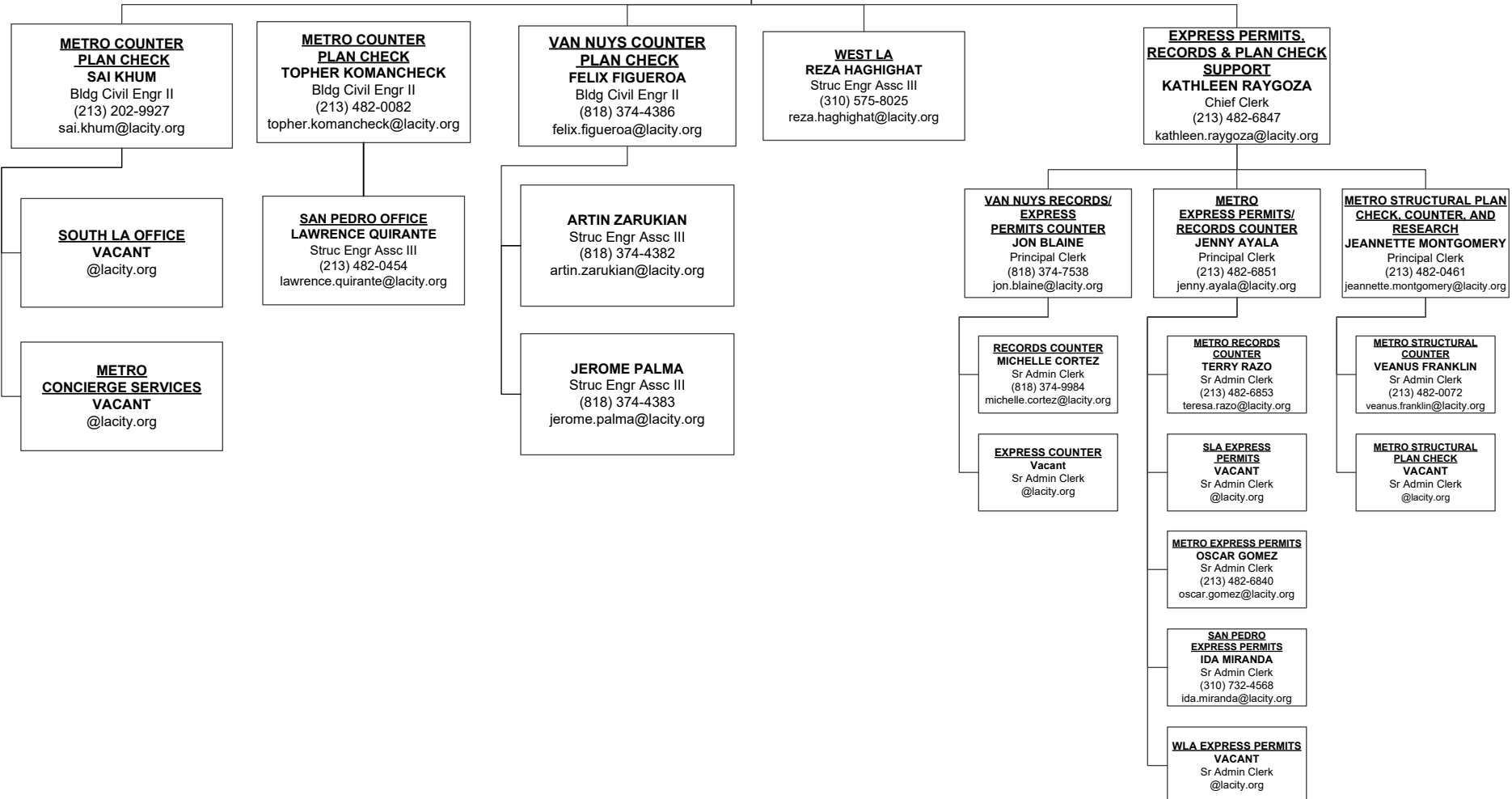
STRUCTURAL PLAN CHECK COUNTER DIVISION

SHAHEN AKELYAN, Chief

Asst Dep Sup of Bldg II

(213) 482-0440

shahen.akelyan@lacity.org



PERMIT AND ENGINEERING BUREAU

BINH PHAN, Chief

(213) 482-0440

binh.phan@lacity.org

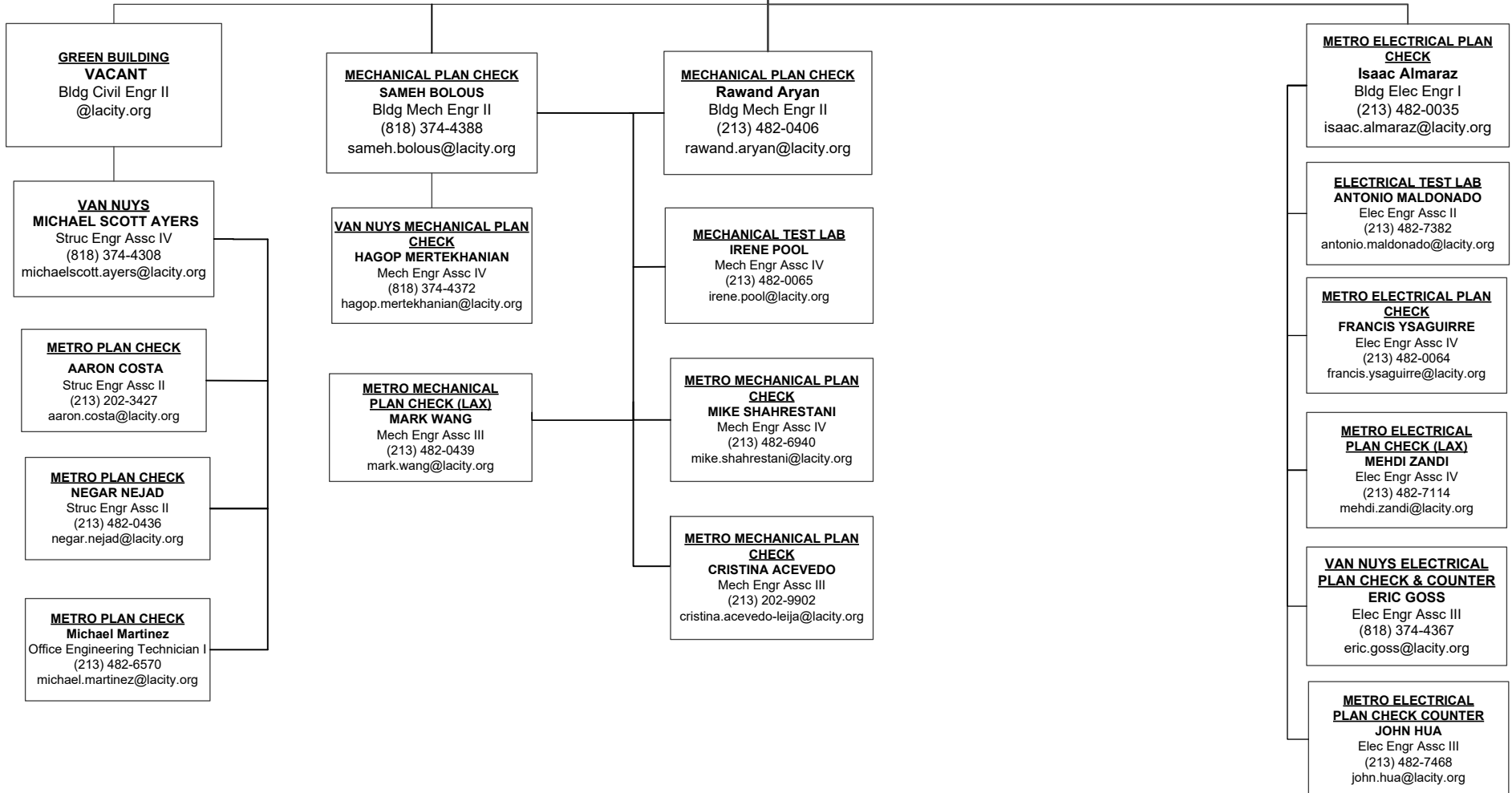
GREEN, ELECTRICAL & MECHANICAL DIVISION

ADEL SALAH EDDINE, Chief

Asst Dep Sup of Bldg II

(213) 482-0053

adel.salah-eddine@lacity.org



INSPECTION BUREAU
PASCAL CHALLITA, Chief
 (213) 482-6712
 pascal.challita@lacity.org
DENVER (SHAWN) HARGIS, Assistant Chief
 (213) 482-0342
 denver.hargis@lacity.org

KAITLIN MILLS
 Secretary
 (213) 482-7212
 kaitlin.mills@lacity.org

BUILDING INSPECTION/INSPECTION CASE MANAGEMENT (ICM)/ RESTAURANT & SMALL BUSINESS EXPRESS PROGRAM (RSBEP)
YERVAND CHAPANYAN
 Chief Inspector
 (213) 482-0492
 yervand.chapanyan@lacity.org

TRADE LICENSING SECTION
CRYSTAL HERNANDEZ
 Principal Clerk
 (213) 482-0315
 crystal.hernandez@lacity.org

ELEVATOR/PRESSURE VESSEL INSPECTION
JAMES GARRISON
 Chief Inspector
 (213) 202-3467
 jim.garrison@lacity.org

MATERIALS CONTROL
TED RIES
 Principal Inspector
 (213) 202-9856
 ted.ries@lacity.org

BUILDING INSPECTION METRO
ADAM BURGESS
 Principal Inspector
 (213) 202-9856
 adam.burgess@lacity.org

RSBEP/ICM ADMIN SUPPORT
TATIA WADE
 Administrative Clerk
 (213) 482-0464
 tatia.wade@lacity.org

ELEVATOR INSPECTION
LARRY ISIDRO
 Principal Inspector
 (213) 202-9830
 larry.isidro@lacity.org

SPECIAL EVENTS/TENT INSPECTIONS
FELIX CEBALLOS
 Build Inspector
 (213) 482-7359
 felix.cebillos@lacity.org

SOFT STORY INSPECTION
WINSTON DUNNING
 Sr Build Inspector
 (213) 482-0373
 winston.dunning@lacity.org

ELEVATOR INSPECTION METRO
DAVID JENNINGS
 Sr Safety Eng Elev
 (213) 202-9832
 david.jennings@lacity.org

PRESSURE VESSEL INSPECTION CODE DESK METRO
JUAN CARLOS CHAVEZ
 Sr Safety Eng Press Ves
 (213) 202-9852
 juancarlos.chavez@lacity.org

CERTIFIED LICENSED CONTRACTOR (CLC)/ CERTIFIED WELDERS
TIM DAY
 Sr Build Inspector
 (213) 482-0383
 tim.day@lacity.org

BUILDING INSPECTION VAN NUYS
RICKEY JACKSON
 Principal Inspector
 (818) 374-1104
 rickey.jackson@lacity.org

ELEVATOR INSPECTION VN
JIMMIE GRABATIN
 Sr Safety Eng Elev
 (818) 374-1139
 jim.grabatin@lacity.org

PRESSURE VESSEL INSPECTION CODE DESK VN
RENATO FABIAN
 Sr Safety Eng Press Ves
 (818) 374-1149
 renato.fabian@lacity.org

BUILDING INSPECTION WEST LA
HENRY BAGHDASSARIAN
 Principal Inspector
 (310) 914-3905
 henry.baghdassarian@lacity.org

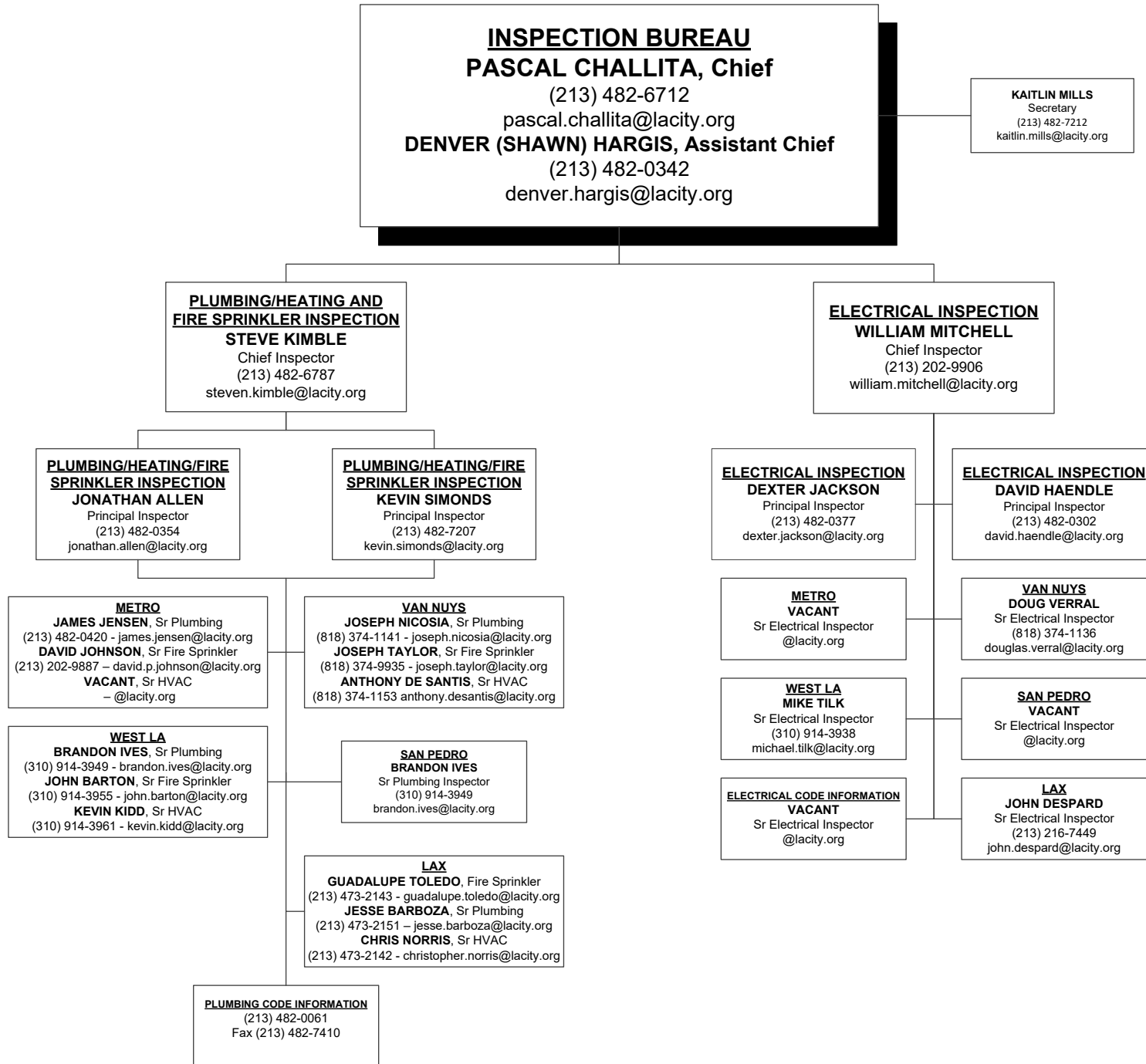
ELEVATOR INSPECTION WLA
VACANT
 Sr Safety Eng Elev
 @lacity.org

PRESSURE VESSEL INSPECTION CODE DESK WLA
VACANT
 Sr Safety Eng Press Ves
 @lacity.org

BUILDING INSPECTION SAN PEDRO
DAVID TSAU
 Sr Build Inspector
 (213) 914-3917
 david.tsau@lacity.org

ELEVATOR CODE INFORMATION & APPOINTMENTS
 (213) 202-9844
 Fax (213) 202-9922

BUILDING INSPECTION LAX
NICK LAROCCA
 Sr Build Inspector
 (213) 923-6121
 nick.larocca@lacity.org



INSPECTION BUREAU
PASCAL CHALLITA, Chief
 (213) 482-6712
 pascal.challita@lacity.org
VICTOR CUEVAS, Assistant Chief
 (213) 202-9869
 victor.cuevas@lacity.org

KAITLIN MILLS
 Secretary
 (213) 482-7212
 kaitlin.mills@lacity.org

RESIDENTIAL INSPECTION
RONALD MYRICK
 Chief Inspector
 (213) 202-3469
 ronald.myrick@lacity.org

GRADING
J. ADOLFO ACOSTA
 Geotechnical Engineer III
 (213) 482-6967
 jesus.acosta@lacity.org

TRAINING AND EMERGENCY MANAGEMENT
LISA YANCEY
 Chief Inspector
 (213) 482-7097
 lisa.yancey@lacity.org

METRO/SAN PEDRO
D. BRIAN HAUFF
 Principal Inspector
 (213) 482-0323
 derold.hauff@lacity.org

VAN NUYS
JOHN JANSON
 Principal Inspector
 (818) 774-4335
 john.janson@lacity.org

WLA
DANIEL ORRANTE
 Principal Inspector
 (310) 914-3904
 daniel.orrante@lacity.org

GRADING INSPECTION
SERGIO VALENZUELA
 Principal Inspector
 (213) 482-0397
 sergio.valenzuela@lacity.org

GEOTECHNICAL ENGINEERING
YING LIU
 Geotechnical Engineer II
 (213) 482-0494
 ying.liu@lacity.org

ARMOND GREGORYONA
 Principal Inspector
 (213) 482-7370
 armond.gregoryona@lacity.org

TRAINING

EMERG MGMT

CD #5C, 10, & #13
RUBEN SALAS
 Sr Build Mech Inspector
 (213) 482-6962
 ruben.salas@lacity.org

CD #12
 19040 Vanowen St.
VACANT
 Sr Build Mech Inspector
 @lacity.org

CD #5A
 11620 Wilshire Blvd. #1100
MICHAEL PELHAM
 Sr Build Mech Inspector
 (310) 914-3908
 michael.pelham@lacity.org

METRO
MICHAEL TEMPLE
 Sr Build Inspector
 213-482-0396
 michael.temple@lacity.org

GRADING PLAN CHECK
DAN RYAN EVANGELISTA
 Struc Engr Assc III
 (213) 482-6810
 dan.evangelista@lacity.org

ELECTRICAL
MATTHEW COTTER
 Sr Electrical Inspector
 (213) 482-6797
 matthew.cotter@lacity.org

VACANT
 Emergency Management
 Coordinator
 @lacity.org

VACANT
 Sr Build Mech Inspector
 @lacity.org

CD #7
 6262 Van Nuys Blvd
ROBERT GOLD
 Sr Build Mech Inspector
 (818) 374-1158
 robert.gold@lacity.org

CD #11
 11620 Wilshire Blvd. #1100
KENNETH NAGLE
 Sr Build Mech Inspector
 (310) 914-3906
 kenneth.nagle@lacity.org

WEST LA INSPECTION
VASIL MIHALEV
 Sr Build Inspector
 (310) 914-3934
 vasil.mihalev@lacity.org

ENGINEERING GEOLOGY
DANIEL SCHNEIDERREIT
 Engineering Geologist II
 (213) 482-0430
 daniel.schneiderreit@lacity.org

HVAC
KEVIN BROWN
 Build Mech Inspector
 (213) 482-6795
 kevin.brown@lacity.org

ED GARCIA
 Sr Build Mech Inspector
 (213) 482-6786
 edward.garcia@lacity.org

CD #1 & #14
 221 N. Figueroa, 8th Fl.
CHARLES BOGHOSKHAN
 Sr Build Mech Inspector
 (213) 202-3445
 charles.boghoskhan@lacity.org

CD #5B
 6262 Van Nuys Blvd.
VACANT
 Sr Build Mech Inspector
 @lacity.org

CD #5D
 11620 Wilshire Blvd. #1100
VACANT
 Sr Build Mech Inspector
 @lacity.org

VAN NUYS INSPECTION
CHARLES POWELL
 Sr Build Inspector
 (818) 374-4355
 charles.powell@lacity.org

BUILDING
JOHN DODGE
 Sr Build Inspector
 (213) 326-9546
 john.dodge@lacity.org

METRO/VN/WLA/SP INVESTIGATIONS
VACANT
 Sr Build Inspector
 @lacity.org

CD #8 & #9
 221 N. Figueroa, 8th Fl.
HAL FULTZ
 Sr Build Mech Inspector
 (818) 374-9823
 hal.fultz@lacity.org

TRACTS
 19040 Vanowen St
SEAN WIRCH
 Sr Build Mech Inspector
 (818) 774-4354
 sean.wirch@lacity.org

CD #6
 11620 Wilshire Blvd. #1100
RICHARD STEINBACH
 Sr Build Mech Inspector
 (310) 914-3909
 richard.steinbach@lacity.org

SAN PEDRO INSPECTION
VASIL MIHALEV
 Sr Building Inspector
 (310) 914-3934
 vasil.mihalev@lacity.org

PLUMBING
ARMANDO PULIDO
 Sr Plumbing Inspector
 (213) 482-0346
 armando.pulido@lacity.org

HIGH RISE RETROFIT/EQ INSPECTION
VACANT
 Sr Build Inspector
 @lacity.org

CD #4
 221 N. Figueroa, 8th Fl.
CRAIG DAVIS
 Sr Build Mech Inspector
 (213) 202-3261
 craig.davis@lacity.org

METRO TRACTS
SCOTT FINNILA
 Sr Build Mech Inspector
 (213) 482-0384
 scott.finnila@lacity.org

CD #2
 6262 Van Nuys Blvd
DAVE MATSON
 Sr Build Mech Inspector
 (818) 374-1159
 dave.matson@lacity.org

RESIDENTIAL/ZONING
ANDREW NAVE
 Build Mech Inspector
 (213) 482-7278
 andrew.nave@lacity.org

INVESTIGATIONS
LINN MELVIN
 Build Mech Inspector
 (213) 482-0371
 trey.melvin@lacity.org

CD #15
 638 S. Beacon St.
DONALD CRICHLAW
 Sr Build Mech Inspector
 (213) 202-3431
 donald.crichlow@lacity.org

CD #3
 19040 Vanowen St.
SEAN WIRCH
 Sr Build Mech Inspector
 (818) 774-4354
 sean.wirch@lacity.org

TRAINING COORDINATOR
VACANT
 Management Analyst
 @lacity.org

CODE ENFORCEMENT BUREAU
CATHERINE NUEZCA-GABA, Chief
 (213) 252-3931
 catherine.nuezcagaba@lacity.org
ERIC JAKEMAN, Assistant Chief
 (213) 252-3976
 eric.jakeman@lacity.org

FAITH MAULUPE
 Principal Clerk
 (213) 252-3376
 faith.maulupe@lacity.org

GENERAL ENFORCEMENT & SPECIALTY/SIGNS INSPECTION
JEFF NAPIER
 Chief Inspector
 (213) 263-6846
 jeff.napier@lacity.org

GENERAL ENFORCEMENT, ANNUAL INSPECTION MONITORING, PROACTIVE CODE ENFORCEMENT, & VACANT BUILDING ABATEMENT
JACK CONGER
 Chief Inspector
 (213) 252-3310
 jack.conger@lacity.org

CITYWIDE SIGNS
DANIEL SANCHEZ
 Principal Inspector
 (213) 252-3926
 daniel.sanchez@lacity.org

CENTRAL REGION GENERAL ENFORCEMENT
DANIEL SANCHEZ
 Principal Inspector
 (213) 252-3926
 daniel.sanchez@lacity.org

SOUTH REGION GENERAL ENFORCEMENT
BRUCE TODD
 Principal Inspector
 (213) 978-4502
 bruce.todd@lacity.org

CITYWIDE ANNUAL INSPECTION MONITORING
DAVID JAMES
 Principal Inspector
 (818) 374-9806
 dave.james@lacity.org

NORTH REGION GENERAL ENFORCEMENT (CODE)
DAVID JAMES
 Principal Inspector
 (818) 374-9806
 dave.james@lacity.org

CITYWIDE PACE 2 & 3
SHAWN ESHBACH
 Principal Inspector
 (213) 252-3962
 shawn.eshbach@lacity.org

CITYWIDE VBA & FORECLOSURE REGISTRY PROGRAM
SHAWN ESHBACH
 Principal Inspector
 (213) 252-3962
 shawn.eshbach@lacity.org

SIGN ENFORCEMENT
MICAH WILLIAMS
 Sr Build Mech Inspector
 (213) 252-3087
 micah.williams@lacity.org

CD #1
ROBERT MINASSIANS
 Sr Build Mech Inspector
 (213) 252-3038
 robert.minassians@lacity.org

CD #8
JAVIER RAMOS
 Sr Build Mech Inspector
 (213) 978-4504
 javier.ramos@lacity.org

NORTH REGION WILLIE ROSS
 Sr Build Mech Inspector
 (818) 374-9837
 willie.ross@lacity.org

CD #2
DAVID HICKMAN
 Sr Build Mech Inspector
 (818) 230-0288
 david.hickman@lacity.org

PRO-ACTIVE CODE ENFORCEMENT 2
VACANT
 Sr Build Mech Inspector
 @lacity.org

VACANT BUILDING ABATEMENT
PATRICK LIEBREGT
 Sr Build Mech Inspector
 (213) 252-3962
 patrick.liebrege@lacity.org

NEW CONSTRUCTION
MICAH WILLIAMS
 Sr Build Mech Inspector
 (213) 252-3087
 micah.williams@lacity.org

CD #4
HAGOP BADOSSIAN
 Sr Build Mech Inspector
 (213) 482-0469
 hagop.badossian@lacity.org

CD #9
DANIEL GONZALEZ
 Sr Build Mech Inspector
 (213) 978-4495
 daniel.a.gonzalez@lacity.org

METRO REGION JASON SUMMERS
 Sr Build Inspector
 (213) 252-3041
 jason.summers@lacity.org

CD #3
ROBERT SUNSERI
 Sr Build Mech Inspector
 (818) 374-9857
 robert.sunseri@lacity.org

PRO-ACTIVE CODE ENFORCEMENT 3
PATRICK LIEBREGT
 Sr Build Mech Inspector
 (213) 252-3962
 patrick.liebrege@lacity.org

OFF-SITE SIGNS PERIODIC INSPECTION PROGRAM
MICAH WILLIAMS
 Sr Build Mech Inspector
 (213) 252-3087
 micah.williams@lacity.org

CD #5
ROBERT CHAVEZ
 Sr Build Mech Inspector
 (213) 252-3049
 robert.chavez@lacity.org

CD #10
DONALD WONG
 Sr Build Mech Inspector
 (213) 252-3964
 donald.wong@lacity.org

CD #6
CHRIS LEKO
 Sr Build Mech Inspector
 (818) 374-9858
 christopher.leko@lacity.org

ADAPTIVE RESPONSE UNIT
MARK RUDE
 Sr Build Mech Inspector
 (213) 925-3551
 mark.rude@lacity.org

CD #13
MARK BEVELAQUA
 Sr Build Mech Inspector
 (213) 252-3977
 mark.bevelaqua@lacity.org

CD #11
JOHN MATTILLO
 Sr Build Mech Inspector
 (213) 978-4498
 john.mattillo@lacity.org

CD #7
MARK VAN SLOOTEN
 Sr Build Mech Inspector
 (818) 374-9820
 mark.vanslooten@lacity.org

CD #14
AUGUSTUS ALBAS
 Sr Build Mech Inspector
 (323) 526-9348
 augustus.albas@lacity.org

CD #15
PAUL BECKER
 Sr Build Mech Inspector
 (310) 732-4530
 paul.becker@lacity.org

CD #12
PIERRE VEGA
 Sr Build Mech Inspector
 (818) 374-9853
 pierre.vega@lacity.org

LEGAL LIAISON
DA LIU
 Sr Build Mech Inspector
 (213) 252-3393
 da.liu@lacity.org

LEGAL LIAISON
CLAUDIO MORENO
 Sr Build Mech Inspector
 (213) 978-4503
 claudio.moreno@lacity.org

LEGAL LIAISON
ALFREDO FLORES
 Sr Build Mech Inspector
 (818) 374-9859
 alfredo.flores@lacity.org

CODE ENFORCEMENT BUREAU
CATHERINE NUEZCA-GABA, Chief
(213) 252-3931
catherine.nuezcagaba@lacity.org
ERIC JAKEMAN, Assistant Chief
(213) 252-3976
eric.jakeman@lacity.org

ENVIRONMENTAL AFFAIRS DIVISION
LOCAL ENFORCEMENT AGENCY
DAVID THOMPSON
Environmental Affairs Officer
(213) 252-3932
david.thompson@lacity.org

SOUTH REGION
JOSE GUTIERREZ
Environmental Supervisor II
(213) 252-3348
jose.gutierrez@lacity.org

NORTH REGION
MEGAN LEE
Environmental Supervisor I
(213) 252-3344
megan.lee@lacity.org

HEALTH, SAFETY & ADMINISTRATION
ANDY KAO
Industrial Hygienist
(213) 252-3967
andy.kao@lacity.org

RESOURCE MANAGEMENT BUREAU

ANA MAE YUTAN, Chief

(213) 482-6703

anamae.yutan@lacity.org

EMILIO RODRIGUEZ

Assistant Chief

Chief Mgmt Analyst

(213) 482-6818

emilio.rodriguez@lacity.org

EMILY PINEDA

Administrative Clerk

emily.pineda@lacity.org

CHERYL HASS

Assistant Chief

Acting Dept Chief Accountant

(213) 482-7318

cheryl.hass@lacity.org

BUDGET & GENERAL ADMINISTRATIVE SERVICES DIVISION

CONTRACTS AND SUPPORT SERVICES DIVISION

RECORDS MANAGEMENT DIVISION

FINANCIAL SERVICES DIVISION

TONY PELAEZ

Sr Mgmt Analyst II

(213) 482-6766

tony.pelaez@lacity.org

TIFFANY BALTAZAR

Sr Mgmt Analyst II

(213) 482-6776

tiffany.baltazar@lacity.org

CHAUNTEL MARTIN

Management Analyst

(213) 482-6560

chauntel.martin@lacity.org

EMMA PANGILINAN

Principal Accountant I

(213) 482-6802

emma.pangilinan@lacity.org

JEREMY CORONEL

Principal Accountant I

(213) 482-7347

jeremy.coronel@lacity.org

BUDGET & GENERAL ADMINISTRATIVE SERVICES MAIN LINE
LADBS.ASD@lacity.org

CUSTODIAN OF RECORDS
VACANT
ladbs.custodianofrecords@lacity.org

ANSINEE TOWNSEND
Principal Clerk
(213) 482-7345
ansinee.townsend@lacity.org

LIENS AGNES SONDERVAN-ROSENFELD
Management Analyst
(213) 482-6528
agnes.sondervan-rosenfeld@lacity.org

GENERAL ACCOUNTING
LEO CANTIMBUHAN
Sr Accountant I
(213) 482-6718
leo.cantimbuhana@lacity.org

ACCOUNTS PAYABLE
EMILY HU
Sr Accountant II
(213) 482-6534
emily.hu@lacity.org

ACCOUNTS RECEIVABLE
VACANT
Sr Accountant II
(213)XXX-XXXX
@lacity.org

INTERNET DOCUMENT IMAGING SYSTEM
JOSHUA BLANCHER
Sr Admin Clerk
(213) 482-7143
joshua.blancher@lacity.org

EUSA VALDEZ
Sr Admin Clerk
(213) 482-6885
eusa.valdez@lacity.org

RESIDENTIAL PROPERTY REPORTS
SUNEETA ATYAM
Sr Admin Clerk
(213) 482-6772
suneeta.atyam@lacity.org

SUPPLIES
JOHN BOROUGH
Store Keeper II
(213) 482-6813
john.borough@lacity.org

SUBJECT SPECIALTY CALL GROUP
LORENA ESPINOZA
Sr Admin Clerk
(213) 482-6549
lorena.espinoza@lacity.org

ADMINISTRATIVE SERVICES SUPPORT
APRIL DOUGLASS-LAWSON
Sr Admin Clerk
(213) 482-6710
april.dougllass-lawson@lacity.org

PAYROLL
ANDREW BYRNE
Payroll Supervisor
(213) 482-6538
andrew.byrne@lacity.org

CASHIERING SERVICES
VICTORIA VASQUEZ
Chief Cashier
(213) 482-6953
mariavictoria.vasquez@lacity.org

TECHNOLOGY SERVICES BUREAU

VACANT, Chief

@lacity.org

GREG WILCOX, Director of Systems

(213) 275-3449

greg.wilcox@lacity.org

ADMINISTRATIVE DIVISION

HANA NGO

Management Analyst
(213) 482-7441
hana.ngo@lacity.org

CUSTOMER ENGAGEMENT

**DIVISION
MINH ONG**

Build Civil Engr II
(213) 482-0029
minh.ong@lacity.org

SOFTWARE DEVELOPMENT

**DIVISION
JEANNE LY**

Sr. Sys Analyst II
(213) 482-0046
jeanne.ly@lacity.org

**OPERATIONS AND
INFRASTRUCTURE DIVISION**

LING KE

Sr. Sys Analyst II
(213) 482-0026
ling.ke@lacity.org

**CLOUD AND
INFRASTRUCTURE DIVISION**

SAAD TARIQ

Sr Sys Analyst II
(213) 887-6947
saad.tariq@lacity.org

**APPLICATION
DEVELOPMENT DIVISION**

SHANNON HAAS

Sr Sys Analyst II
(213) 482-0050
shannon.haas@lacity.org

WEBSITE SUPPORT

DIANE STINER

Sr. Admin. Clerk
(213) 482-7421
diane.r.stiner@lacity.org

BUSINESS ANALYSIS SERVICES

MARK CAYABYAB

Sr Sys Analyst I
(213) 482-0027
mark.cayabyab@lacity.org

**SUBJECT MATTER EXPERT
SERVICES**

WILL MCCONNAUGHY

Sr. Build Mech Inspector
(213) 482-0049
will.mcconnaughy@lacity.org

**OPERATIONS
ADALBERTO MARROQUIN**

Systems Analyst
(213) 202-9912
adalberto.marroquin@lacity.org

**NETWORK & SECURITY
SUPPORT**

SHAO YAO SAMUEL WEI

Systems Administrator I
(213) 482-0033
samuel.wei@lacity.org

DATA AND SYSTEM SUPPORT

LUEN CHAN

Data Base Architect
(213) 482-0002
luen.chan@lacity.org

**PERMITTING SYSTEM
WEI BIN HE**

Programmer Analyst V
(213) 482-0037
wei.he@lacity.org