



# ORGANIZATIONAL CHART & TELEPHONE DIRECTORY

This directory is designed to:

1. Give users direct access to the Department's top-level management and supervisory personnel, and
2. To see where the managers and supervisors fit into the Department's chain-of-command structure.

FOR AUTOMATED INSPECTION REQUESTS ONLY,  
YOU MAY CALL TOLL FREE FROM ANYWHERE  
IN LOS ANGELES COUNTY:

**1-888-524-2845**

OR

OUTSIDE LOS ANGELES COUNTY

213-482-0000

TDD Line 888-833-8389

FOR ALL OTHER SERVICES OR INFORMATION WITHIN  
THE CITY OF LOS ANGELES

**3-1-1**

OR

OUTSIDE LOS ANGELES CITY

1-213-473-3231

*For more information regarding the Los Angeles Department of Building and Safety, please visit [www.ladbs.org](http://www.ladbs.org).*

*Last Updated: 10/08/2024*

# TELEPHONE DIRECTORY INDEX

## DEPARTMENT OF BUILDING AND SAFETY

Executive and Bureau Management .....	Chart 1
Government and Community Relations Division.....	Chart 2
Development Services Case Management Division	
Case Management.....	Chart 3
Preliminary Review.....	Chart 3
Personnel Services.....	Chart 4

## PERMIT AND ENGINEERING BUREAU

Permit and Engineering Bureau Management .....	Chart 5
Structural Plan Check Division	
Metro and ePlan Check .....	Chart 6
Van Nuys District Office .....	Chart 6
West LA District Office .....	Chart 6
High-Rise, Seismic Retrofit and LAX Projects Division	
Soft-Story Retrofit Program .....	Chart 7
High-Rise and Non-Ductile Concrete Buildings.....	Chart 7
LAX .....	Chart 7
Structural Plan Check Counter Division	
Metro Plan Check .....	Chart 8
South LA District Office .....	Chart 8
Van Nuys District Office .....	Chart 8
West LA District Office .....	Chart 8
San Pedro District Office .....	Chart 8
Concierge Services .....	Chart 8
Green/Electrical/Mechanical (GEM) Plan Check Division	
Green Building Plan Check / Inspection.....	Chart 9
Mechanical Plan Check and Test Lab .....	Chart 9
Electrical Plan Check and Test Lab .....	Chart 9

## INSPECTION BUREAU

Commercial Building Inspection .....	Chart 10
Elevator and Pressure Vessel.....	Chart 10
Commercial Inspection .....	Chart 11
Plumbing, Heating and Fire Sprinkler / Electrical	
Residential Inspection.....	Chart 12
Metro / Van Nuys / West LA / San Pedro	
Grading Engineering and Inspection.....	Chart 12
Training and Emergency Management Division .....	Chart 12

## CODE ENFORCEMENT BUREAU

Citywide Signs Code Enforcement .....	Chart 13
General Enforcement and Annual Inspection Monitoring.....	Chart 13
Citywide Pro-Active Code Enforcement.....	Chart 13
Citywide Vacant Building Abatement and Foreclosure Registry Program	Chart 13
Environmental Affairs Division, Local Enforcement Agency.....	Chart 14

## RESOURCE MANAGEMENT BUREAU

Budget and General Administrative Services Division .....	Chart 15
Contracts and Application Services Division.....	Chart 15
Records Management Division .....	Chart 15
Financial Services Division .....	Chart 15

## TECHNOLOGY SERVICES BUREAU

Customer Engagement Division .....	Chart 16
Application Services Division .....	Chart 16
Operations and Infrastructure Division.....	Chart 16
Administration Division .....	Chart 16

DEPARTMENT OF BUILDING AND SAFETY

Chart 1

**OSAMA YOUNAN**  
**GENERAL MANAGER**  
(213) 482-6800  
osama.younan@lacity.org

**GOVERNMENT & COMMUNITY  
RELATIONS**

VACANT, Director  
(213) 482-0447  
@lacity.org  
(See Chart 2 & 3)

**EXECUTIVE OFFICER**

**JOHN WEIGHT**  
(213) 482-6800  
john.weight@lacity.org

**PERSONNEL SERVICES**

**JOSE DEL RIO**  
Personnel Director II  
(213) 820-5986  
jose.del.rio@lacity.org  
(See Chart 4)

**PERMIT AND ENGINEERING BUREAU**

**BINH PHAN**, Chief  
(213) 482-0440  
binh.phan@lacity.org  
(See Charts 5, 6, 7, 8 & 9)

**RESOURCE MANAGEMENT BUREAU**

**ANA MAE YUTAN**, Chief  
(213) 482-6703  
anamae.yutan@lacity.org  
(See Chart 15)

**INSPECTION BUREAU**

**PASCAL CHALLITA**, Chief  
(213) 482-6712  
pascal.challita@lacity.org  
(See Charts 10, 11 & 12)

**CODE ENFORCEMENT BUREAU**

**CATHERINE NUEZCA-GABA**, Chief  
(213) 252-3931  
catherine.nuezcagaba@lacity.org  
(See Charts 13 & 14)

**TECHNOLOGY SERVICES BUREAU**

**VACANT**, Chief  
@lacity.org  
(See Chart 16)

Chart 2

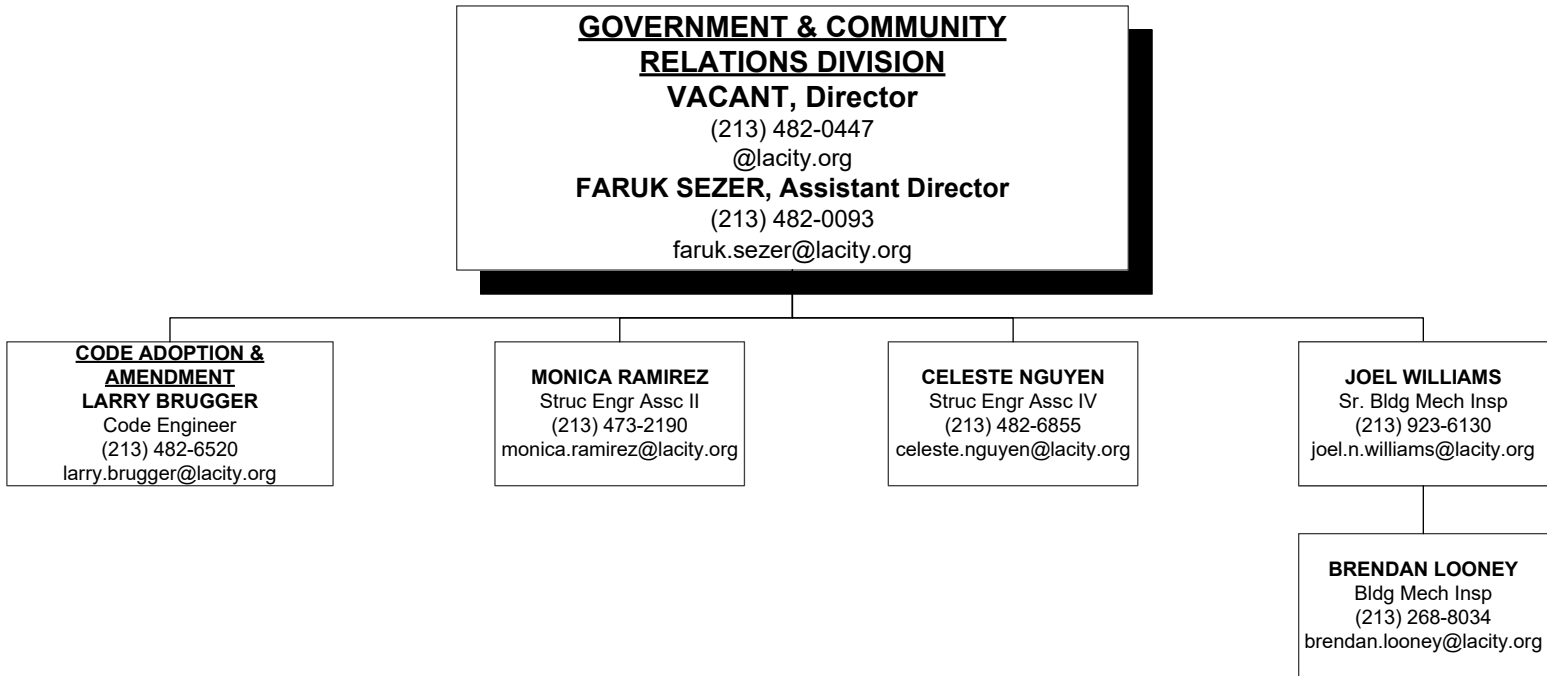


Chart 3

**DEVELOPMENT SERVICES CASE MANAGEMENT/  
CODE STUDIES/BOARD/COMMUNICATIONS**  
VACANT, Director  
Asst Dep Sup of Bldg II  
(213) 482-0447  
@lacity.org

**DEVELOPMENT SERVICES CASE  
MANAGEMENT**  
MINYE PAK  
Sr. Structural Engineer  
(213) 482-6877  
minye.pak@lacity.org

**FARUK SEZER**  
Assistant Director  
(213) 482-0093  
faruk.sezer@lacity.org

**SUB-DIVISION & ZONING  
LETTERS**  
LAURA DUONG  
Struc Engr Assc IV  
(213) 482-0434  
laura.duong@lacity.org

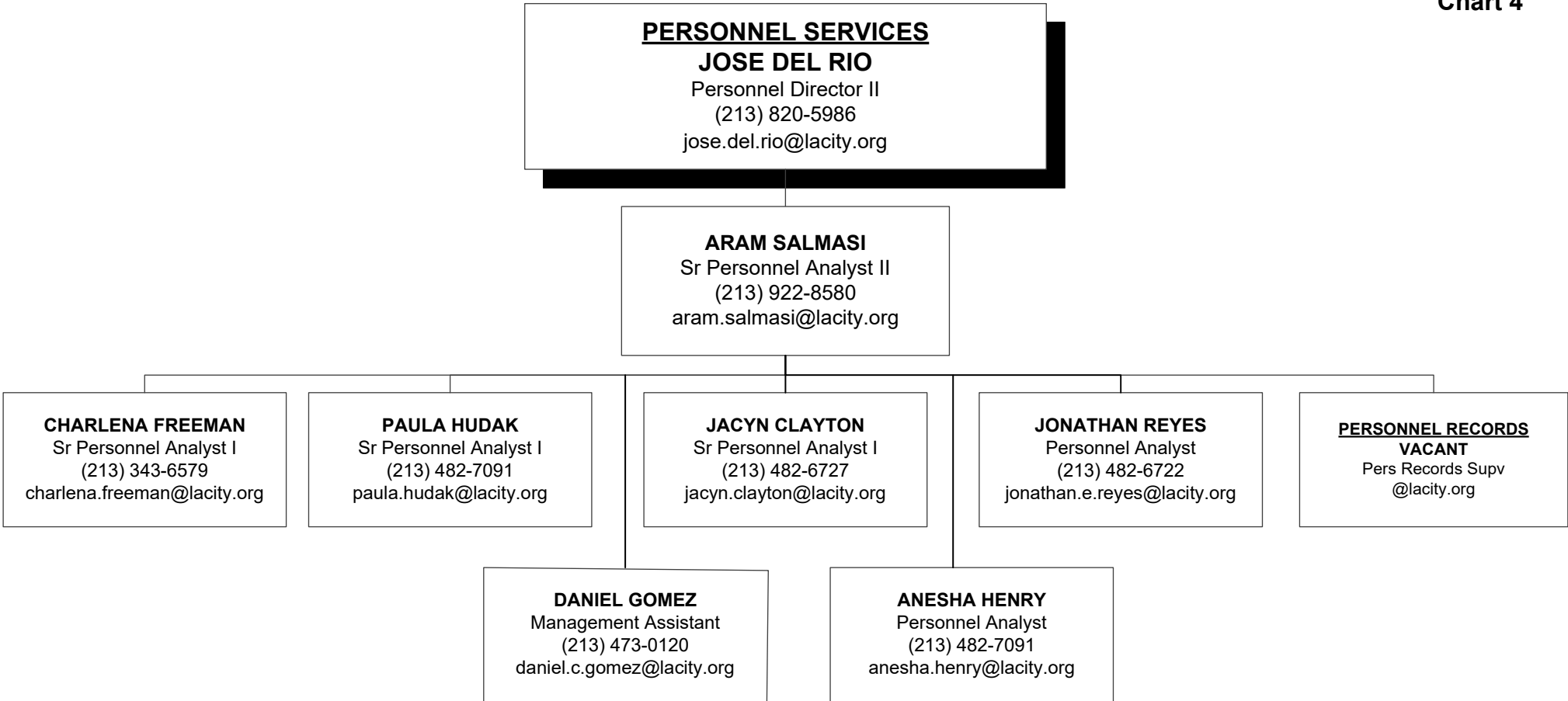
**PRELIMINARY REVIEW**  
**Restaurant & Small Business**  
**Express Program (RSBEP)**  
Salvador Quintanilla  
Struc Engr Assc II  
(213) 482-0471  
salvador.quintanilla@lacity.org  
  
**All Others**  
Mina Habib  
Struc Engr Assc II  
(213) 482-0446  
mina.habib@lacity.org

**CASE MANAGEMENT**  
ARMEN JIVALAGIAN  
Struc Engr Assc IV  
(213) 482-6870  
armen.jivalagian@lacity.org

**BOARD OF BUILDING & SAFETY/  
DISABLED ACCESS APPEALS**  
**COMMISSION OFFICE**  
VERONICA LOPEZ  
Board Secretary  
Struc Engr Assc IV  
(213) 482-7429  
veronica.lopez@lacity.org

**COMMUNICATIONS**  
GAIL GADDI  
Public Information Director  
(213) 887-6962  
ladbs-media@lacity.org  
gail.gaddi@lacity.org

Chart 4



**PERMIT AND ENGINEERING BUREAU**

**BINH PHAN, Chief**

(213) 482-0440

binh.phan@lacity.org

**GREEN/ELECTRICAL/  
MECHANICAL DIVISION**  
**ADEL SALAH EDDINE, Chief**  
Asst Dep Sup of Bldg II  
(213) 482-0053  
adel.salah-eddine@lacity.org  
See Chart 9

**STRUCTURAL PLAN CHECK  
DIVISION**  
**ALLEN MANALANSAN, Chief**  
Asst Dep Sup of Bldg II  
(213) 482-0463  
allen.manalansan@lacity.org  
See Chart 6

**HIGH-RISE, SEISMIC  
RETROFIT AND LAX  
PROJECTS DIVISION**  
**CHARMIE HUNYH, Chief**  
Asst Dep Sup of Bldg II  
(213) 482-0440  
charmie.huynh@lacity.org  
See Chart 7

**STRUCTURAL PLAN CHECK  
COUNTER DIVISION**  
**SHAHEN AKELYAN, Chief**  
Asst Dep Sup of Bldg II  
(213) 482-0440  
shahen.akelyan@lacity.org  
See Chart 8

Chart 6

**PERMIT AND ENGINEERING BUREAU**  
**BINH PHAN, Chief**  
(213) 482-0440  
binh.phan@lacity.org

**STRUCTURAL PLAN CHECK DIVISION**  
**ALLEN MANALANSAN, Chief**  
Asst Dep Sup of Bldg II  
(213) 482-0463  
allen.manalansan@lacity.org

**AFFORDABLE HOUSING SECTION/BUILDING RESEARCH**  
**EUGENE BARBEAU**  
Bldg Civil Engr II  
(213) 978-4454  
eugene.barbeau@lacity.org

**RUDY ARIAS**  
Bldg Civil Engr I  
(213) 202-9903  
rodolfo.arias@lacity.org

**METRO STRUCTURAL PLAN CHECK**  
**CHAD DOI**  
Bldg Civil Engr II  
(213) 482-0453  
chad.doi@lacity.org

**STRUCTURAL PLAN CHECK/ DISABLED ACCESS**  
**CAROLYNN NEPOMUCENO**  
Bldg Civil Engr I  
(323) 350-6792  
carolynn.nepomuceno@lacity.org

**VACANT**  
Bldg Civil Engr I  
@lacity.org

**METRO STRUCTURAL PLAN CHECK/ePLAN**  
**MICHAEL PEREZ**  
Bldg Civil Engr II  
(213) 482-0432  
michael.x.perez@lacity.org

**JOHN FRANCIA**  
Bldg Civil Engr I  
(213) 202-5406  
john.francia@lacity.org

**VAN NUYS STRUCTURAL PLAN CHECK**  
**JASON HEALEY**  
Bldg Civil Engr II  
(818) 374-4373  
jason.healey@lacity.org

**STEVEN KIM**  
Bldg Civil Engr I  
(818) 374-4325  
steven.kim@lacity.org

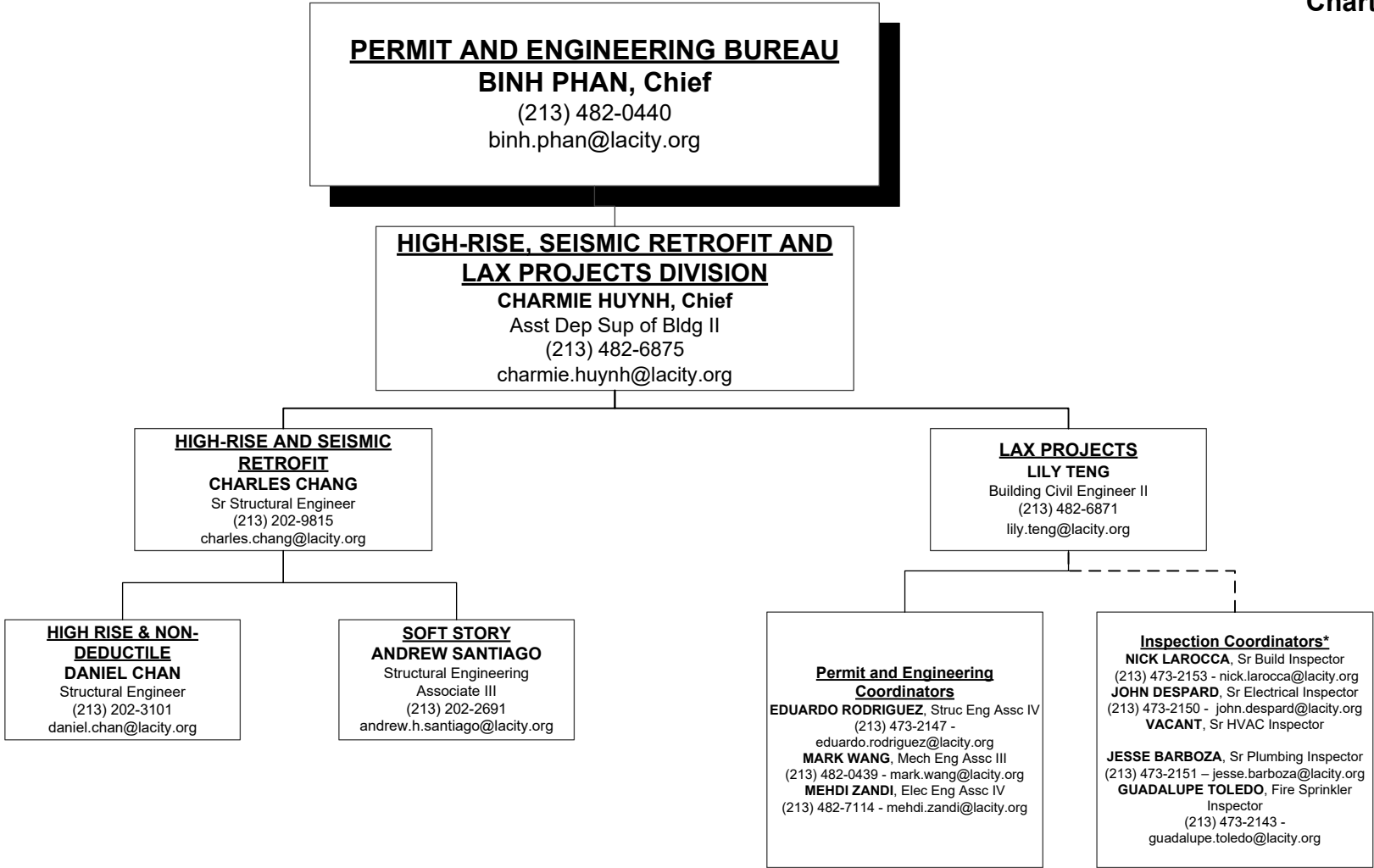
**VACANT**  
Bldg Civil Engr I  
@lacity.org

**VAN NUYS STRUCTURAL PLAN CHECK**  
**NICKAN HEDAYAT**  
Bldg Civil Engr II  
(818) 374-4389  
omid.hedayat@lacity.org

**WEST LA STRUCTURAL PLAN CHECK**  
**CHI HARU SUZUKI**  
Bldg Civil Engr II  
(310) 575-8080  
chiharu.suzuki@lacity.org



Chart 7



\*Reporting to Inspection Bureau

**PERMIT AND ENGINEERING BUREAU**

**BINH PHAN, Chief**

(213) 482-0440

binh.phan@lacity.org

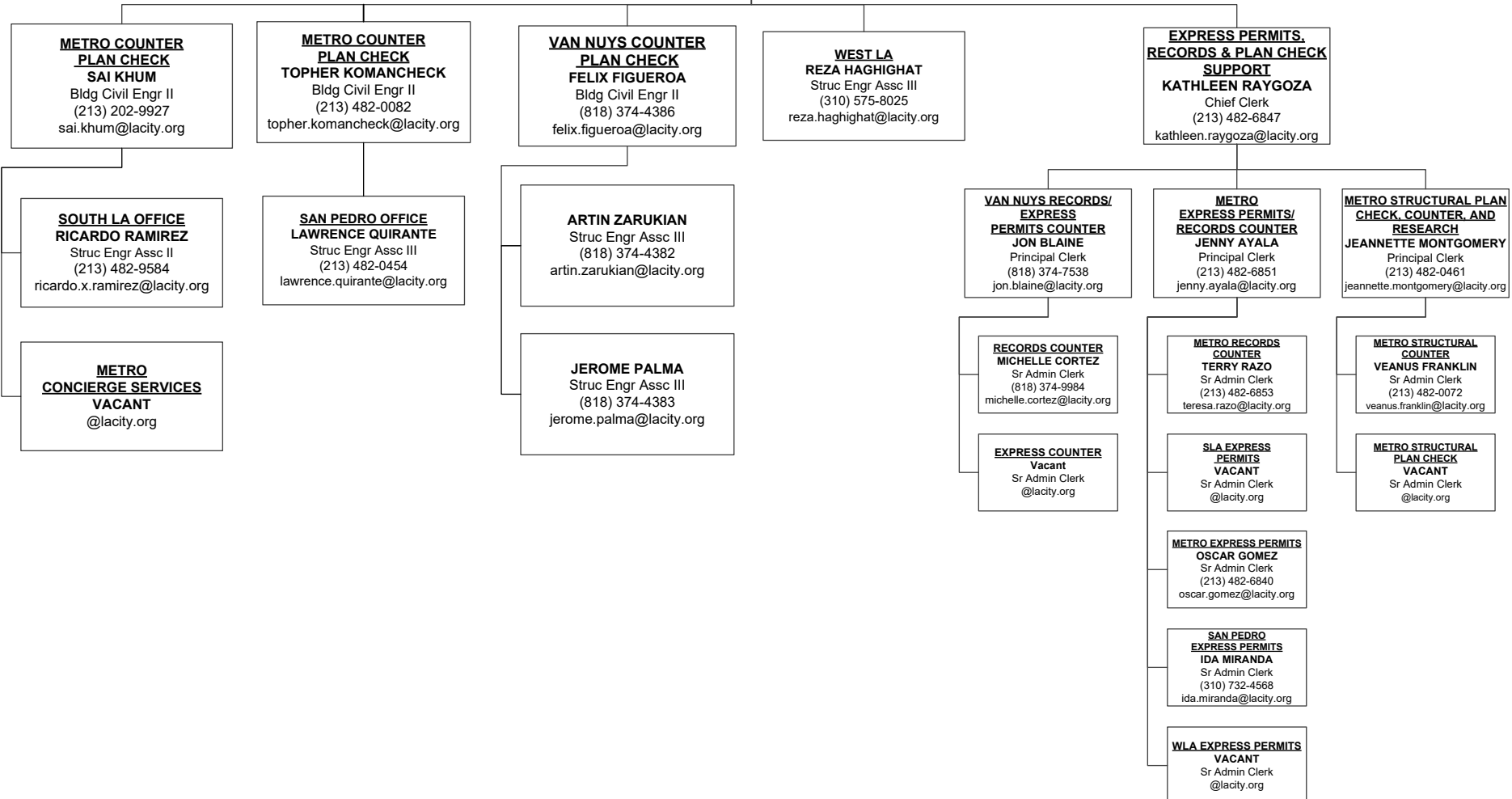
**STRUCTURAL PLAN CHECK COUNTER DIVISION**

**SHAHEN AKELYAN, Chief**

Asst Dep Sup of Bldg II

(213) 482-0440

shahen.akelyan@lacity.org



**PERMIT AND ENGINEERING BUREAU**

**BINH PHAN, Chief**

(213) 482-0440

binh.phan@lacity.org

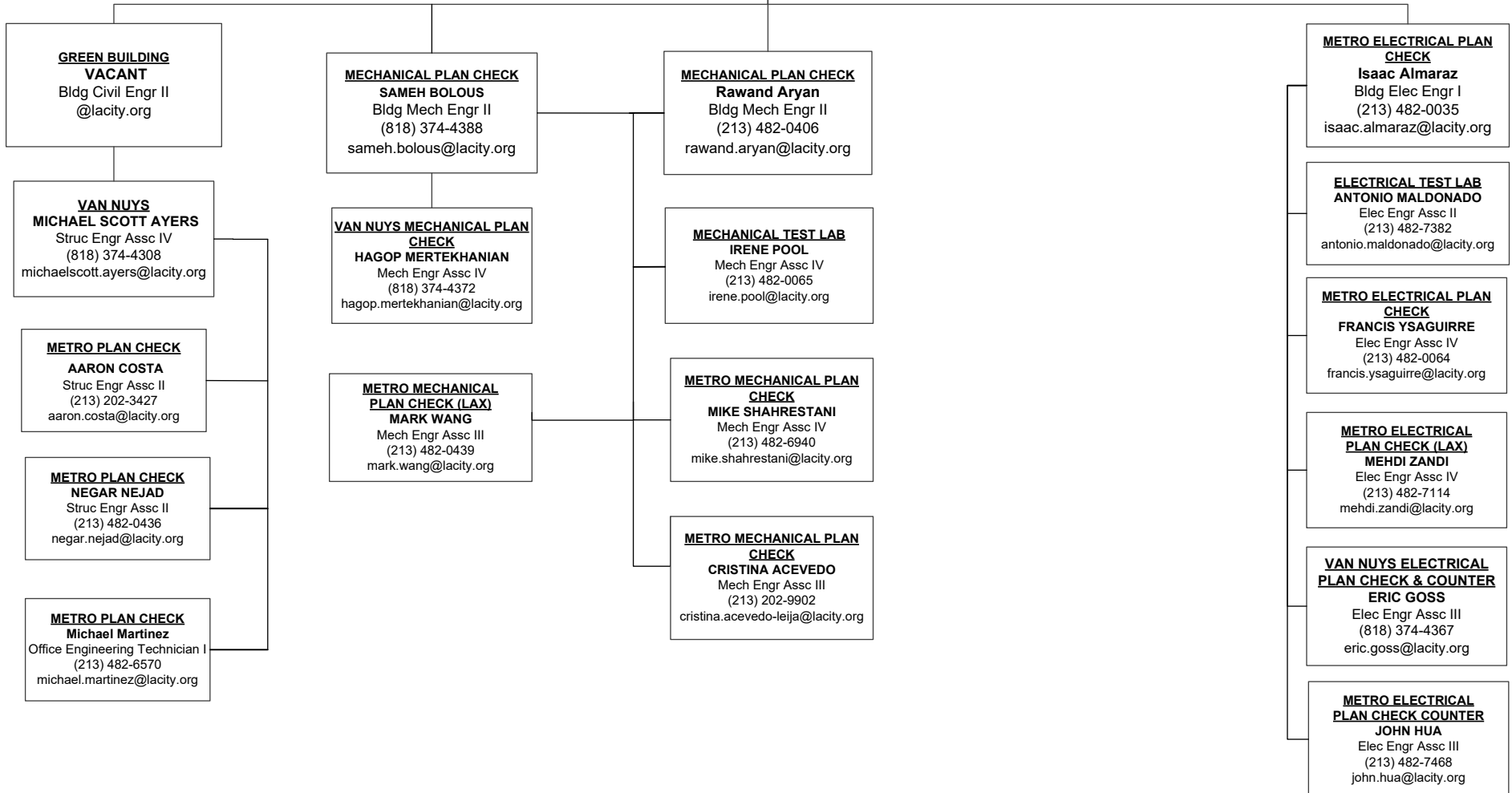
**GREEN, ELECTRICAL & MECHANICAL  
DIVISION**

**ADEL SALAH EDDINE, Chief**

Asst Dep Sup of Bldg II

(213) 482-0053

adel.salah-eddine@lacity.org



**INSPECTION BUREAU**  
**PASCAL CHALLITA, Chief**  
 (213) 482-6712  
 pascal.challita@lacity.org  
**DENVER (SHAWN) HARGIS, Assistant Chief**  
 (213) 482-0342  
 denver.hargis@lacity.org

**KAITLIN MILLS**  
 Secretary  
 (213) 482-7212  
 kaitlin.mills@lacity.org

**BUILDING INSPECTION/INSPECTION CASE MANAGEMENT (ICM)/ RESTAURANT & SMALL BUSINESS EXPRESS PROGRAM (RSBEP)**  
**YERVAND CHAPANYAN**  
 Chief Inspector  
 (213) 482-0492  
 yervand.chapanyan@lacity.org

**TRADE LICENSING SECTION**  
**CRYSTAL HERNANDEZ**  
 Principal Clerk  
 (213) 482-0315  
 crystal.hernandez@lacity.org

**ELEVATOR/PRESSURE VESSEL INSPECTION**  
**JAMES GARRISON**  
 Chief Inspector  
 (213) 202-3467  
 jim.garrison@lacity.org

**INSPECTION CASE MANAGEMENT**  
**TED RIES**  
 Principle Inspector  
 (213) 202-9856  
 ted.ries@lacity.org

**BUILDING INSPECTION METRO**  
**ADAM BURGESS**  
 Principal Inspector  
 (213) 202-9856  
 adam.burgess@lacity.org

**RSBEP/ICM ADMIN SUPPORT**  
**TATIA WADE**  
 Administrative Clerk  
 (213) 482-0464  
 tatia.wade@lacity.org

**ELEVATOR INSPECTION**  
**LARRY ISIDRO**  
 Principal Inspector  
 (213) 202-9830  
 larry.isidro@lacity.org

**SPECIAL EVENTS/TENT INSPECTIONS**  
**FELIX CEBALLOS**  
 Sr Build Inspector  
 (213) 482-7359  
 felix.cebillos@lacity.org

**SOFT STORY INSPECTION**  
**WINSTON DUNNING**  
 Sr Build Inspector  
 (213) 482-0373  
 winston.dunning@lacity.org

**MATERIALS CONTROL**  
**KATY MARTINEZ RAMIREZ**  
 Sr Build Inspector  
 (213) 864-3849  
 katy.ramirez@lacity.org

**ELEVATOR INSPECTION METRO**  
**DAVID JENNINGS**  
 Sr Safety Eng Elev  
 (213) 202-9832  
 david.jennings@lacity.org

**PRESSURE VESSEL INSPECTION CODE DESK METRO**  
**JUAN CARLOS CHAVEZ**  
 Sr Safety Eng Press Ves  
 (213) 202-9852  
 juancarlos.chavez@lacity.org

**CERTIFIED LICENSED CONTRACTOR (CLC)/ CERTIFIED WELDERS**  
**DANIEL VARNAM**  
 Sr Build Inspector  
 (213) 804-0347  
 daniel.varnum@lacity.org

**BUILDING INSPECTION VAN NUYS**  
**RICKEY JACKSON**  
 Principal Inspector  
 (818) 374-1104  
 rickey.jackson@lacity.org

**ELEVATOR INSPECTION VN**  
**JIMMIE GRABATIN**  
 Sr Safety Eng Elev  
 (818) 374-1139  
 jim.grabatin@lacity.org

**PRESSURE VESSEL INSPECTION CODE DESK VN**  
**RENATO FABIAN**  
 Sr Safety Eng Press Ves  
 (818) 374-1149  
 renato.fabian@lacity.org

**BUILDING INSPECTION WEST LA**  
**HENRY BAGHDASSARIAN**  
 Principal Inspector  
 (310) 914-3905  
 henry.baghdassarian@lacity.org

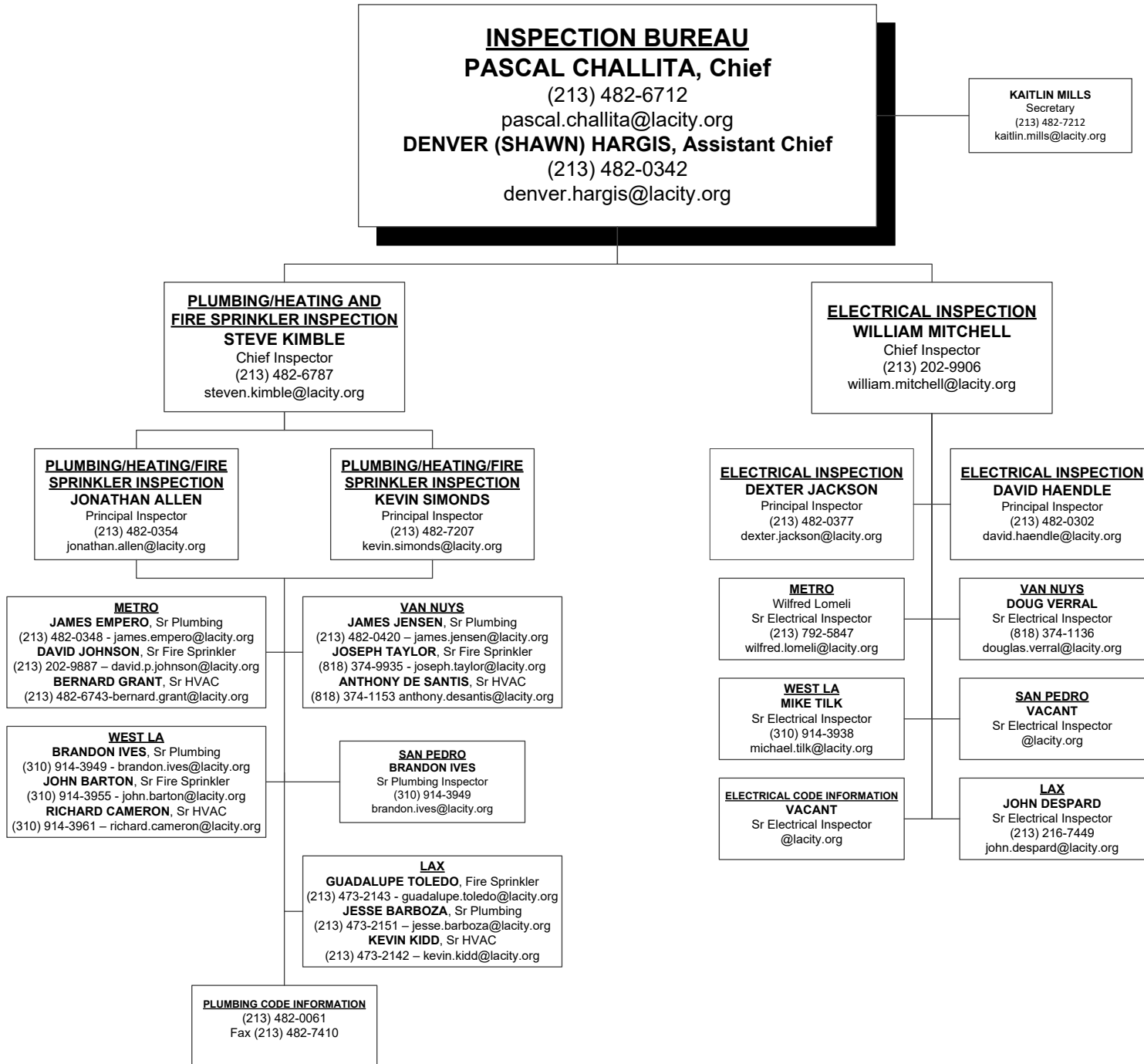
**ELEVATOR INSPECTION WLA**  
**VACANT**  
 Sr Safety Eng Elev  
 @lacity.org

**PRESSURE VESSEL INSPECTION CODE DESK WLA**  
**VACANT**  
 Sr Safety Eng Press Ves  
 @lacity.org

**BUILDING INSPECTION SAN PEDRO**  
**DAVID TSAU**  
 Sr Build Inspector  
 (213) 914-3917  
 david.tsau@lacity.org

**ELEVATOR CODE INFORMATION & APPOINTMENTS**  
 (213) 202-9844  
 Fax (213) 202-9922

**BUILDING INSPECTION LAX**  
**NICK LAROCCA**  
 Sr Build Inspector  
 (213) 923-6121  
 nick.larocca@lacity.org



**INSPECTION BUREAU**  
**PASCAL CHALLITA, Chief**  
 (213) 482-6712  
 pascal.challita@lacity.org  
**VICTOR CUEVAS, Assistant Chief**  
 (213) 202-9869  
 victor.cuevas@lacity.org

**KAITLIN MILLS**  
 Secretary  
 (213) 482-7212  
 kaitlin.mills@lacity.org

**RESIDENTIAL INSPECTION**  
**RONALD MYRICK**  
 Chief Inspector  
 (213) 202-3469  
 ronald.myrick@lacity.org

**GRADING**  
**J. ADOLFO ACOSTA**  
 Geotechnical Engineer III  
 (213) 482-6967  
 jesus.acosta@lacity.org

**TRAINING AND EMERGENCY MANAGEMENT**  
**LISA YANCEY**  
 Chief Inspector  
 (213) 482-7097  
 lisa.yancey@lacity.org

**METRO/SAN PEDRO**  
**D. BRIAN HAUFF**  
 Principal Inspector  
 (213) 482-0323  
 derold.hauff@lacity.org

**VAN NUYS**  
**JOHN JANSON**  
 Principal Inspector  
 (818) 774-4335  
 john.janson@lacity.org

**WLA**  
**DANIEL ORRANTE**  
 Principal Inspector  
 (310) 914-3904  
 daniel.orrante@lacity.org

**GRADING INSPECTION**  
**SERGIO VALENZUELA**  
 Principal Inspector  
 (213) 482-0397  
 sergio.valenzuela@lacity.org

**GEOTECHNICAL ENGINEERING**  
**YING LIU**  
 Geotechnical Engineer II  
 (213) 482-0494  
 ying.liu@lacity.org

**ARMOND GREGORYONA**  
 Principal Inspector  
 (213) 482-7370  
 armond.gregoryona@lacity.org

**TRAINING**

**EMERG MGMT**

**CD #5C, 10, & #13**  
**RUBEN SALAS**  
 Sr Build Mech Inspector  
 (213) 482-6962  
 ruben.salas@lacity.org

**CD #12**  
 19040 Vanowen St.  
**VACANT**  
 Sr Build Mech Inspector  
 @lacity.org

**CD #5A**  
 11620 Wilshire Blvd. #1100  
**MICHAEL PELHAM**  
 Sr Build Mech Inspector  
 (310) 914-3908  
 michael.pelham@lacity.org

**METRO**  
**MICHAEL TEMPLE**  
 Sr Build Inspector  
 213-482-0396  
 michael.temple@lacity.org

**GRADING PLAN CHECK**  
**DAN RYAN EVANGELISTA**  
 Struc Engr Assc III  
 (213) 482-6810  
 dan.evangelista@lacity.org

**ELECTRICAL**  
**MATTHEW COTTER**  
 Sr Electrical Inspector  
 (213) 482-6797  
 matthew.cotter@lacity.org

**VACANT**  
 Emergency Management  
 Coordinator  
 @lacity.org

**VACANT**  
 Sr Build Mech Inspector  
 @lacity.org

**CD #7**  
 6262 Van Nuys Blvd  
**ROBERT GOLD**  
 Sr Build Mech Inspector  
 (818) 374-1158  
 robert.gold@lacity.org

**CD #11**  
 11620 Wilshire Blvd. #1100  
**KENNETH NAGLE**  
 Sr Build Mech Inspector  
 (310) 914-3906  
 kenneth.nagle@lacity.org

**WEST LA INSPECTION**  
**VASIL MIHALEV**  
 Sr Build Inspector  
 (310) 914-3934  
 vasil.mihalev@lacity.org

**ENGINEERING GEOLOGY**  
**DANIEL SCHNEIDERREIT**  
 Engineering Geologist II  
 (213) 482-0430  
 daniel.schneiderreit@lacity.org

**HVAC**  
**KEVIN BROWN**  
 Build Mech Inspector  
 (213) 482-6795  
 kevin.brown@lacity.org

**ED GARCIA**  
 Sr Build Mech Inspector  
 (213) 482-6786  
 edward.garcia@lacity.org

**CD #1 & #14**  
 221 N. Figueroa, 8th Fl.  
**CHARLES BOGHOSKHAN**  
 Sr Build Mech Inspector  
 (213) 202-3445  
 charles.boghoskhan@lacity.org

**CD #5B**  
 6262 Van Nuys Blvd.  
**VACANT**  
 Sr Build Mech Inspector  
 @lacity.org

**CD #5D**  
 11620 Wilshire Blvd. #1100  
**VACANT**  
 Sr Build Mech Inspector  
 @lacity.org

**VAN NUYS INSPECTION**  
**CHARLES POWELL**  
 Sr Build Inspector  
 (818) 374-4355  
 charles.powell@lacity.org

**BUILDING**  
**JOHN DODGE**  
 Sr Build Inspector  
 (213) 326-9546  
 john.dodge@lacity.org

**METRO/VN/WLA/SP INVESTIGATIONS**  
**VACANT**  
 Sr Build Inspector  
 @lacity.org

**CD #8 & #9**  
 221 N. Figueroa, 8th Fl.  
**HAL FULTZ**  
 Sr Build Mech Inspector  
 (818) 374-9823  
 hal.fultz@lacity.org

**TRACTS**  
 19040 Vanowen St  
**SEAN WIRCH**  
 Sr Build Mech Inspector  
 (818) 774-4354  
 sean.wirch@lacity.org

**CD #6**  
 11620 Wilshire Blvd. #1100  
**RICHARD STEINBACH**  
 Sr Build Mech Inspector  
 (310) 914-3909  
 richard.steinbach@lacity.org

**SAN PEDRO INSPECTION**  
**VASIL MIHALEV**  
 Sr Building Inspector  
 (310) 914-3934  
 vasil.mihalev@lacity.org

**PLUMBING**  
**ARMANDO PULIDO**  
 Sr Plumbing Inspector  
 (213) 482-0346  
 armando.pulido@lacity.org

**HIGH RISE RETROFIT/ EQ INSPECTION**  
**VACANT**  
 Sr Build Inspector  
 @lacity.org

**CD #4**  
 221 N. Figueroa, 8th Fl.  
**CRAIG DAVIS**  
 Sr Build Mech Inspector  
 (213) 202-3261  
 craig.davis@lacity.org

**METRO TRACTS**  
**SCOTT FINNILA**  
 Sr Build Mech Inspector  
 (213) 482-0384  
 scott.finnila@lacity.org

**CD #2**  
 6262 Van Nuys Blvd  
**DAVE MATSON**  
 Sr Build Mech Inspector  
 (818) 374-1159  
 dave.matson@lacity.org

**RESIDENTIAL ZONING**  
**ANDREW NAVE**  
 Build Mech Inspector  
 (213) 482-7278  
 andrew.nave@lacity.org

**INVESTIGATIONS**  
**LINN MELVIN**  
 Build Mech Inspector  
 (213) 482-0371  
 trey.melvin@lacity.org

**CD #15**  
 638 S. Beacon St.  
**DONALD CRICHLAW**  
 Sr Build Mech Inspector  
 (213) 202-3431  
 donald.crichlow@lacity.org

**CD #3**  
 19040 Vanowen St.  
**SEAN WIRCH**  
 Sr Build Mech Inspector  
 (818) 774-4354  
 sean.wirch@lacity.org

**TRAINING COORDINATOR**  
**VACANT**  
 Management Analyst  
 @lacity.org

**CODE ENFORCEMENT BUREAU**  
**CATHERINE NUEZCA-GABA, Chief**  
 (213) 252-3931  
 catherine.nuezcagaba@lacity.org  
**ERIC JAKEMAN, Assistant Chief**  
 (213) 252-3976  
 eric.jakeman@lacity.org

**FAITH MAULUPE**  
 Principal Clerk  
 (213) 252-3376  
 faith.maulupe@lacity.org

**GENERAL ENFORCEMENT & SPECIALTY/SIGNS INSPECTION**  
**JEFF NAPIER**  
 Chief Inspector  
 (213) 263-6846  
 jeff.napier@lacity.org

**GENERAL ENFORCEMENT, ANNUAL INSPECTION MONITORING, PROACTIVE CODE ENFORCEMENT, & VACANT BUILDING ABATEMENT**  
**JACK CONGER**  
 Chief Inspector  
 (213) 252-3310  
 jack.conger@lacity.org

**CITYWIDE SIGNS**  
**DANIEL SANCHEZ**  
 Principal Inspector  
 (213) 252-3926  
 daniel.sanchez@lacity.org

**CENTRAL REGION GENERAL ENFORCEMENT**  
**DANIEL SANCHEZ**  
 Principal Inspector  
 (213) 252-3926  
 daniel.sanchez@lacity.org

**SOUTH REGION GENERAL ENFORCEMENT**  
**CLAUDIO MORENO**  
 (213) 978-4502  
 Principal Inspector  
 claudio.moreno@lacity.org

**CITYWIDE ANNUAL INSPECTION MONITORING**  
**DAVID JAMES**  
 Principal Inspector  
 (818) 374-9806  
 dave.james@lacity.org

**NORTH REGION GENERAL ENFORCEMENT (CODE)**  
**DAVID JAMES**  
 Principal Inspector  
 (818) 374-9806  
 dave.james@lacity.org

**CITYWIDE PACE 2 & 3**  
**SHAWN ESHBACH**  
 Principal Inspector  
 (213) 252-3962  
 shawn.eshbach@lacity.org

**CITYWIDE VBA & FORECLOSURE REGISTRY PROGRAM**  
**SHAWN ESHBACH**  
 Principal Inspector  
 (213) 252-3962  
 shawn.eshbach@lacity.org

**SIGN ENFORCEMENT**  
**MICAH WILLIAMS**  
 Sr Build Mech Inspector  
 (213) 252-3087  
 micah.williams@lacity.org

**CD #1**  
**ROBERT MINASSIANS**  
 Sr Build Mech Inspector  
 (213) 252-3038  
 robert.minassians@lacity.org

**CD #8**  
**JAVIER RAMOS**  
 Sr Build Mech Inspector  
 (213) 978-4504  
 javier.ramos@lacity.org

**NORTH REGION WILLIE ROSS**  
 Sr Build Mech Inspector  
 (818) 374-9837  
 willie.ross@lacity.org

**CD #2**  
**DAVID HICKMAN**  
 Sr Build Mech Inspector  
 (818) 230-0288  
 david.hickman@lacity.org

**PRO-ACTIVE CODE ENFORCEMENT 2**  
**JASON SUMMERS**  
 Sr Build Mech Inspector  
 (213) 252-3349  
 jason.summers@lacity.org

**VACANT BUILDING ABATEMENT**  
**HAGOP BADOSSIAN**  
 Sr Build Mech Inspector  
 (213) 252-3902  
 hagop.badossian@lacity.org

**NEW CONSTRUCTION**  
**MICAH WILLIAMS**  
 Sr Build Mech Inspector  
 (213) 252-3087  
 micah.williams@lacity.org

**CD #4**  
**MARK FERARRI**  
 Sr Build Mech Inspector  
 (213) 482-0469  
 mark.ferarri@lacity.org

**CD #9**  
**DANIEL GONZALEZ**  
 Sr Build Mech Inspector  
 (213) 978-4495  
 daniel.a.gonzalez@lacity.org

**METRO REGION BEHROUZ HASHEMI**  
 Sr Build Inspector  
 (213) 252-3041  
 behrouz.hashemi@lacity.org

**CD #3**  
**JEFF DIFIORE**  
 Sr Build Mech Inspector  
 (818) 374-9857  
 jeffrey.difiore@lacity.org

**PRO-ACTIVE CODE ENFORCEMENT 3**  
**PATRICK LIEBREGT**  
 Sr Build Mech Inspector  
 (213) 252-3962  
 patrick.liebregt@lacity.org

**OFF-SITE SIGNS PERIODIC INSPECTION PROGRAM**  
**MICAH WILLIAMS**  
 Sr Build Mech Inspector  
 (213) 252-3087  
 micah.williams@lacity.org

**CD #5**  
**ROBERT CHAVEZ**  
 Sr Build Mech Inspector  
 (213) 252-3049  
 robert.chavez@lacity.org

**CD #10**  
**DONALD WONG**  
 Sr Build Mech Inspector  
 (213) 252-3964  
 donald.wong@lacity.org

**CD #6**  
**CHRIS LEKO**  
 Sr Build Mech Inspector  
 (818) 374-9858  
 christopher.leko@lacity.org

**ADAPTIVE RESPONSE UNIT**  
**MARK RUDE**  
 Sr Build Mech Inspector  
 (213) 925-3551  
 mark.rude@lacity.org

**CD #13**  
**MARK BEVELAQUA**  
 Sr Build Mech Inspector  
 (213) 252-3977  
 mark.bevelaqua@lacity.org

**CD #11**  
**JOHN MATTILLO**  
 Sr Build Mech Inspector  
 (213) 978-4498  
 john.mattillo@lacity.org

**CD #7**  
**MARK VAN SLOOTEN**  
 Sr Build Mech Inspector  
 (818) 374-9820  
 mark.vanslooten@lacity.org

**CD #14**  
**AUGUSTUS ALBAS**  
 Sr Build Mech Inspector  
 (323) 526-9348  
 augustus.albas@lacity.org

**CD #15**  
**VACANT**  
 Sr Build Mech Inspector  
 @lacity.org

**CD #12**  
**PIERRE VEGA**  
 Sr Build Mech Inspector  
 (818) 374-9853  
 pierre.vega@lacity.org

**LEGAL LIAISON**  
**DA LIU**  
 Sr Build Mech Inspector  
 (213) 252-3393  
 da.liu@lacity.org

**LEGAL LIAISON**  
**VACANT**  
 Sr Build Mech Inspector  
 @lacity.org

**LEGAL LIAISON**  
**ALFREDO FLORES**  
 Sr Build Mech Inspector  
 (818) 374-9859  
 alfredo.flores@lacity.org

**CODE ENFORCEMENT BUREAU**  
**CATHERINE NUEZCA-GABA, Chief**  
(213) 252-3931  
catherine.nuezcagaba@lacity.org  
**ERIC JAKEMAN, Assistant Chief**  
(213) 252-3976  
eric.jakeman@lacity.org

**ENVIRONMENTAL AFFAIRS DIVISION**  
**LOCAL ENFORCEMENT AGENCY**  
**DAVID THOMPSON**  
Environmental Affairs Officer  
(213) 252-3932  
david.thompson@lacity.org

**SOUTH REGION**  
**JOSE GUTIERREZ**  
Environmental Supervisor II  
(213) 252-3348  
jose.gutierrez@lacity.org

**NORTH REGION**  
**MEGAN LEE**  
Environmental Supervisor I  
(213) 252-3344  
megan.lee@lacity.org

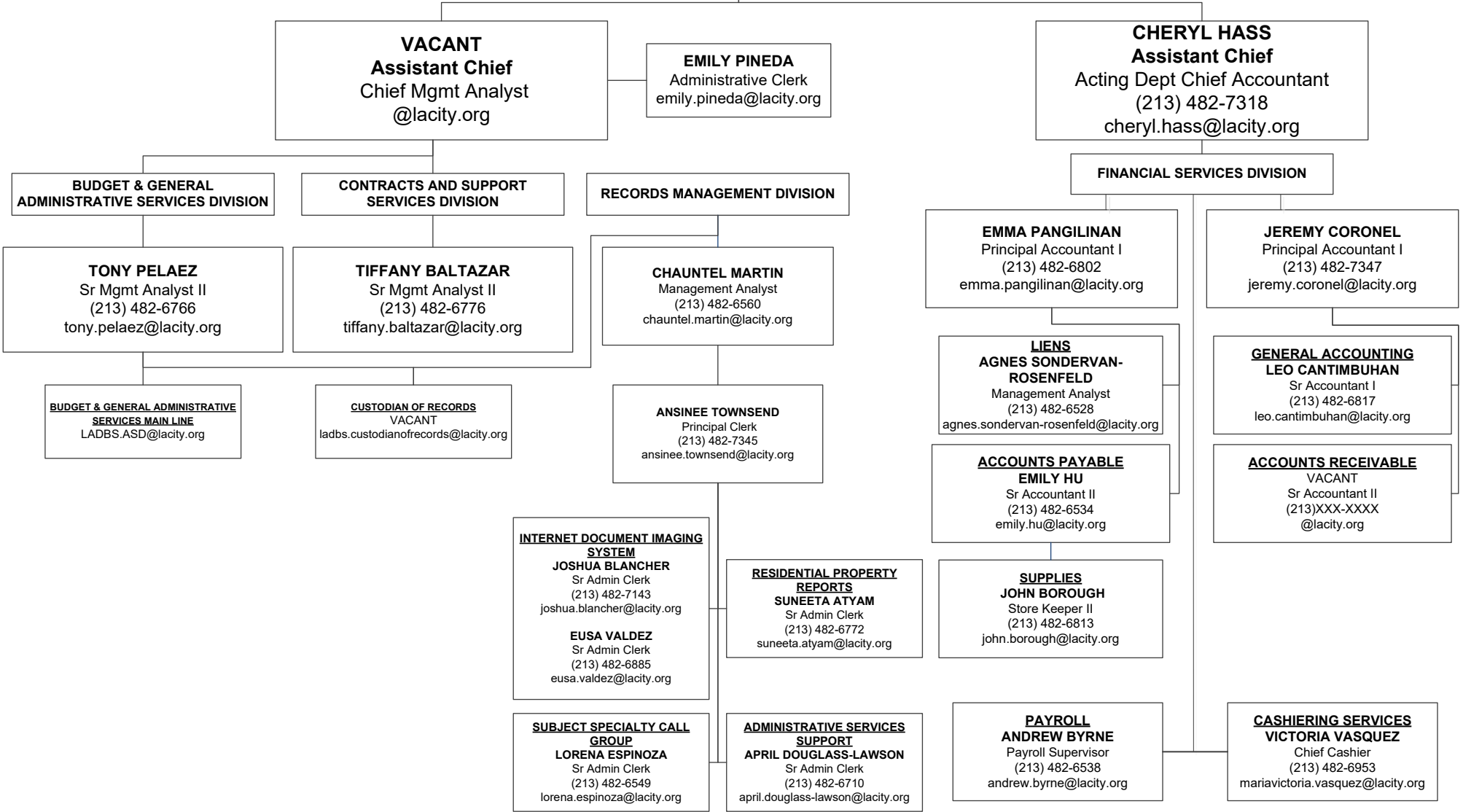
**HEALTH, SAFETY & ADMINISTRATION**  
**ANDY KAO**  
Industrial Hygienist  
(213) 252-3967  
andy.kao@lacity.org



**RESOURCE MANAGEMENT BUREAU**

**ANA MAE YUTAN, Chief**

(213) 482-6703  
anamae.yutan@lacity.org



**TECHNOLOGY SERVICES BUREAU**

**VACANT, Chief**

@lacity.org

**GREG WILCOX, Director of Systems**

(213) 274-3449

greg.wilcox@lacity.org

