



ORGANIZATIONAL CHART & TELEPHONE DIRECTORY

This directory is designed to:

1. Give users direct access to the Department's top-level management and supervisory personnel, and
2. To see where the managers and supervisors fit into the Department's chain-of-command structure.

FOR AUTOMATED INSPECTION REQUESTS ONLY,
YOU MAY CALL TOLL FREE FROM ANYWHERE
IN LOS ANGELES COUNTY:

1-888-524-2845

OR

OUTSIDE LOS ANGELES COUNTY

213-482-0000

TDD Line 888-833-8389

FOR ALL OTHER SERVICES OR INFORMATION WITHIN
THE CITY OF LOS ANGELES

3-1-1

OR

OUTSIDE LOS ANGELES CITY

1-213-473-3231

For more information regarding the Los Angeles Department of Building and Safety, please visit www.ladbs.org.

TELEPHONE DIRECTORY INDEX

DEPARTMENT OF BUILDING AND SAFETY

Executive and Bureau Management	Chart 1
Government and Community Relations Division.....	Chart 2
Development Services Case Management Division	
Case Management.....	Chart 3
Preliminary Review.....	Chart 3
Personnel Services.....	Chart 4

PERMIT AND ENGINEERING BUREAU

Permit and Engineering Bureau Management	Chart 5
Structural Plan Check Division	
Metro and ePlan Check	Chart 6
Van Nuys District Office	Chart 6
West LA District Office	Chart 6
High-Rise, Seismic Retrofit and LAX Projects Division	
Soft-Story Retrofit Program	Chart 7
High-Rise and Non-Ductile Concrete Buildings.....	Chart 7
LAX	Chart 7
Structural Plan Check Counter Division	
Metro Plan Check	Chart 8
South LA District Office	Chart 8
Van Nuys District Office	Chart 8
West LA District Office	Chart 8
San Pedro District Office.....	Chart 8
Concierge Services	Chart 8
Green/Electrical/Mechanical (GEM) Plan Check Division	
Green Building Plan Check / Inspection.....	Chart 9
Mechanical Plan Check and Test Lab	Chart 9
Electrical Plan Check and Test Lab	Chart 9

INSPECTION BUREAU

Commercial Building Inspection	Chart 10
Elevator and Pressure Vessel.....	Chart 10
Commercial Inspection	Chart 11
Plumbing, Heating and Fire Sprinkler / Electrical	
Residential Inspection.....	Chart 12
Metro / Van Nuys / West LA / San Pedro	
Grading Engineering and Inspection.....	Chart 12
Training and Emergency Management Division	Chart 12

CODE ENFORCEMENT BUREAU

Citywide Signs Code Enforcement	Chart 13
General Enforcement and Annual Inspection Monitoring.....	Chart 13
Citywide Pro-Active Code Enforcement.....	Chart 13
Citywide Vacant Building Abatement and Foreclosure Registry Program	Chart 13
Environmental Affairs Division, Local Enforcement Agency.....	Chart 14

RESOURCE MANAGEMENT BUREAU

Budget and General Administrative Services Division	Chart 15
Contracts and Application Services Division.....	Chart 15
Records Management Division	Chart 15
Financial Services Division	Chart 15

TECHNOLOGY SERVICES BUREAU

Customer Engagement Division	Chart 16
Application Services Division	Chart 16
Operations and Infrastructure Division.....	Chart 16
Administration Division	Chart 16

DEPARTMENT OF BUILDING AND SAFETY

Chart 1

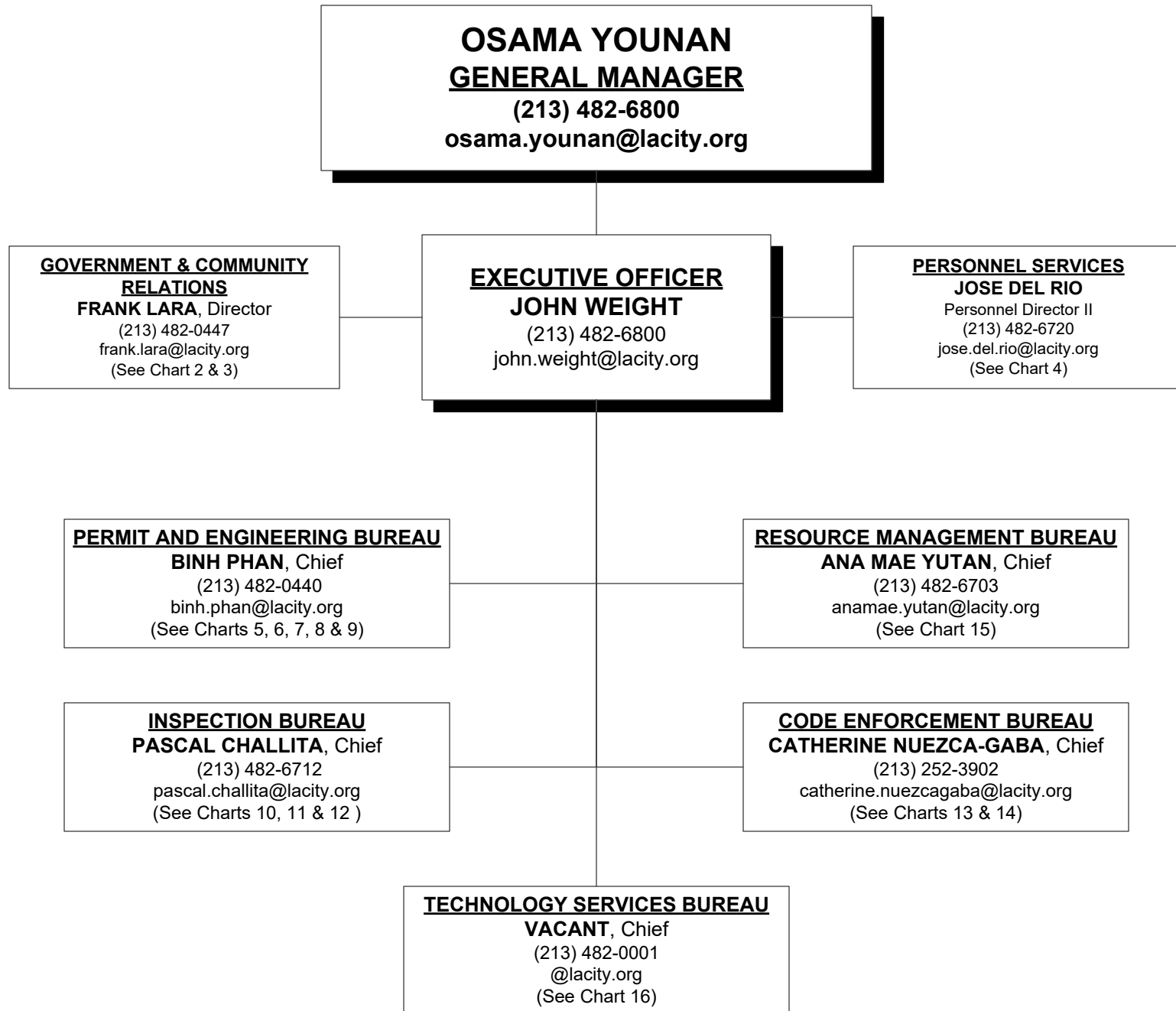


Chart 2

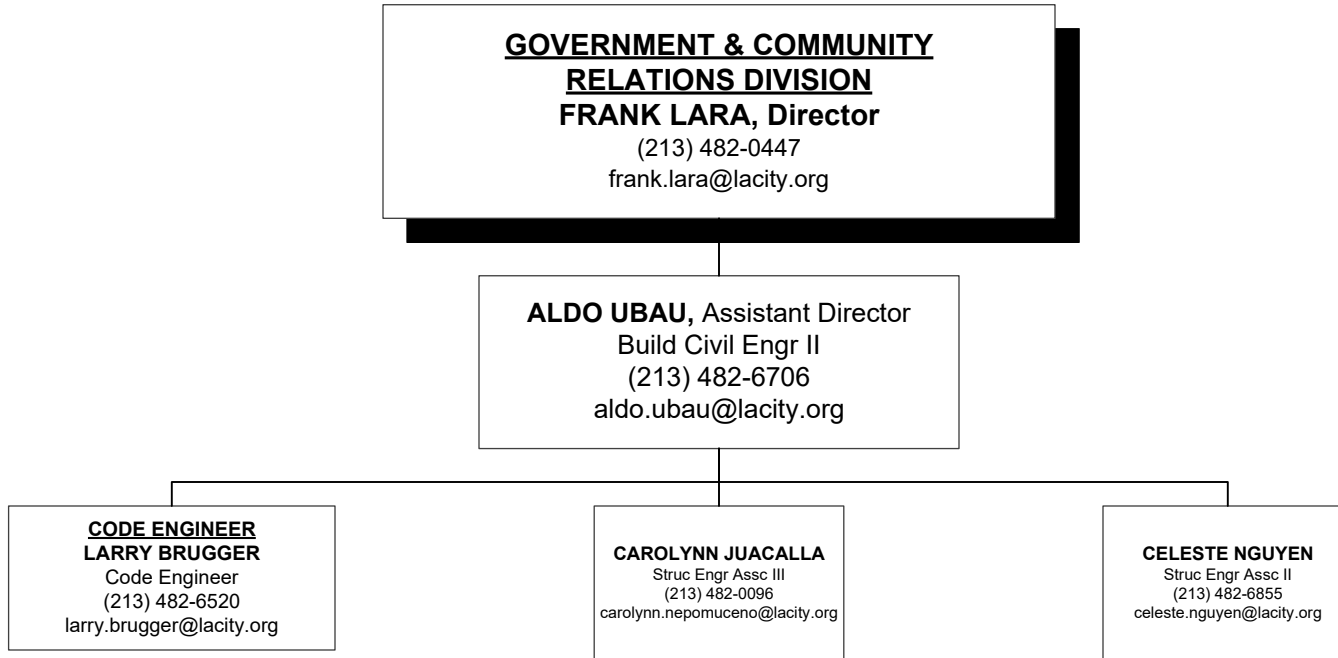


Chart 3

**DEVELOPMENT SERVICES CASE MANAGEMENT/
CODE STUDIES/BOARD/COMMUNICATIONS**
FRANK LARA, Director
Asst Dep Sup of Bldg II
(213) 482-0447
frank.lara@lacity.org

**DEVELOPMENT SERVICES CASE
MANAGEMENT**
MINYE PAK
Sr. Structural Engineer
(213) 482-6877
minye.pak@lacity.org

BOARD & COMMUNICATIONS
EDWARD MORENO
Sr Mgmt Analyst II
edward.moreno@lacity.org

**SUB-DIVISION & ZONING
LETTERS**
LAURA DUONG
Struc Engr Assc IV
(213) 482-0434
laura.duong@lacity.org

PRELIMINARY REVIEW
RUDOLF KINAR MELIKOFF
Struc Engr Assc IV
(818) 374-4332
rudolf.melikoff@lacity.org

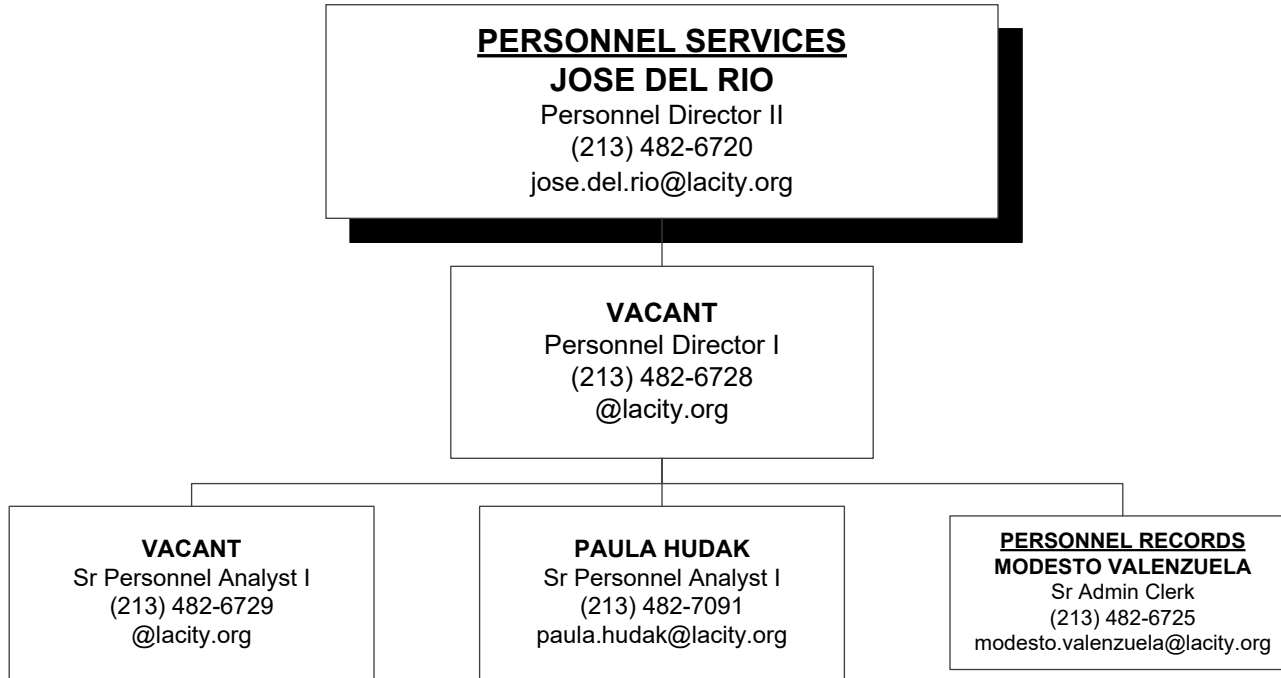
CASE MANAGEMENT
ARMEN JIVALAGIAN
Struc Engr Assc IV
(213) 482-6870
armen.jivalagian@lacity.org

**BOARD OF BUILDING & SAFETY
COMMISSION OFFICE**
VERONICA LOPEZ
Board Secretary (Acting)
Struc Engr Assc II
(213) 482-0466
veronica.lopez@lacity.org

COMMUNICATIONS
SANDRA MENDOZA
Sr Mgmt Analyst I
(213) 482-6770
sandra.mendoza@lacity.org

CUSTODIAN OF RECORDS
SANDRA MENDOZA (TEMP)
Sr Mgmt Analyst I
(213) 482-6770
sandra.mendoza@lacity.org

Chart 4



PERMIT AND ENGINEERING BUREAU

BINH PHAN, Chief

(213) 482-0440

binh.phan@lacity.org

**GREEN/ELECTRICAL/
MECHANICAL DIVISION**
ADEL SALAH EDDINE, Chief
Asst Dep Sup of Bldg II
(213) 482-0053
adel.salah-eddine@lacity.org
See Chart 9

**STRUCTURAL PLAN CHECK
DIVISION**
ALLEN MANALANSAN, Chief
Asst Dep Sup of Bldg II
(213) 482-0440
allen.manalansan@lacity.org
See Chart 6

**HIGH-RISE. SEISMIC
RETROFIT AND LAX
PROJECTS DIVISION**
CHARMIE HUNYH, Chief
Asst Dep Sup of Bldg II
charmie.huynh@lacity.org
See Chart 7

**STRUCTURAL PLAN CHECK
COUNTER DIVISION**
SHAHEN AKELYAN, Chief
Asst Dep Sup of Bldg II
(213) 482-0440
shahen.akelyan@lacity.org
See Chart 8

PERMIT AND ENGINEERING BUREAU
BINH PHAN, Chief
(213) 482-0440
binh.phan@lacity.org

STRUCTURAL PLAN CHECK DIVISION
ALLEN MANALANSAN, Chief
Asst Dep Sup of Bldg II
(213) 482-0440
allen.manalansan@lacity.org

AFFORDABLE HOUSING SECTION/BUILDING RESEARCH
EUGENE BARBEAU
Bldg Civil Engr II
(213) 202-9814
eugene.barbeau@lacity.org

METRO STRUCTURAL PLAN CHECK
CHAD DOI
Bldg Civil Engr II
(213) 482-0453
chad.doi@lacity.org

METRO STRUCTURAL PLAN CHECK/ePLAN
MICHAEL PEREZ
Bldg Civil Engr II
(213) 482-0432
michael.x.perez@lacity.org

VAN NUYS STRUCTURAL PLAN CHECK
JASON HEALEY
Bldg Civil Engr II
(818) 374-4373
jason.healey@lacity.org

WEST LA STRUCTURAL PLAN CHECK
CHIHARU SUZUKI
Bldg Civil Engr I
(310) 575-8080
chiharu.suzuki@lacity.org

RUDY ARIAS
Bldg Civil Engr I
(213) 202-9903
rodolfo.arias@lacity.org

STRUCTURAL PLAN CHECK/ DISABLED ACCESS
FARUK SEZER
Bldg Civil Engr I
213-482-0093
faruk.sezer@lacity.org

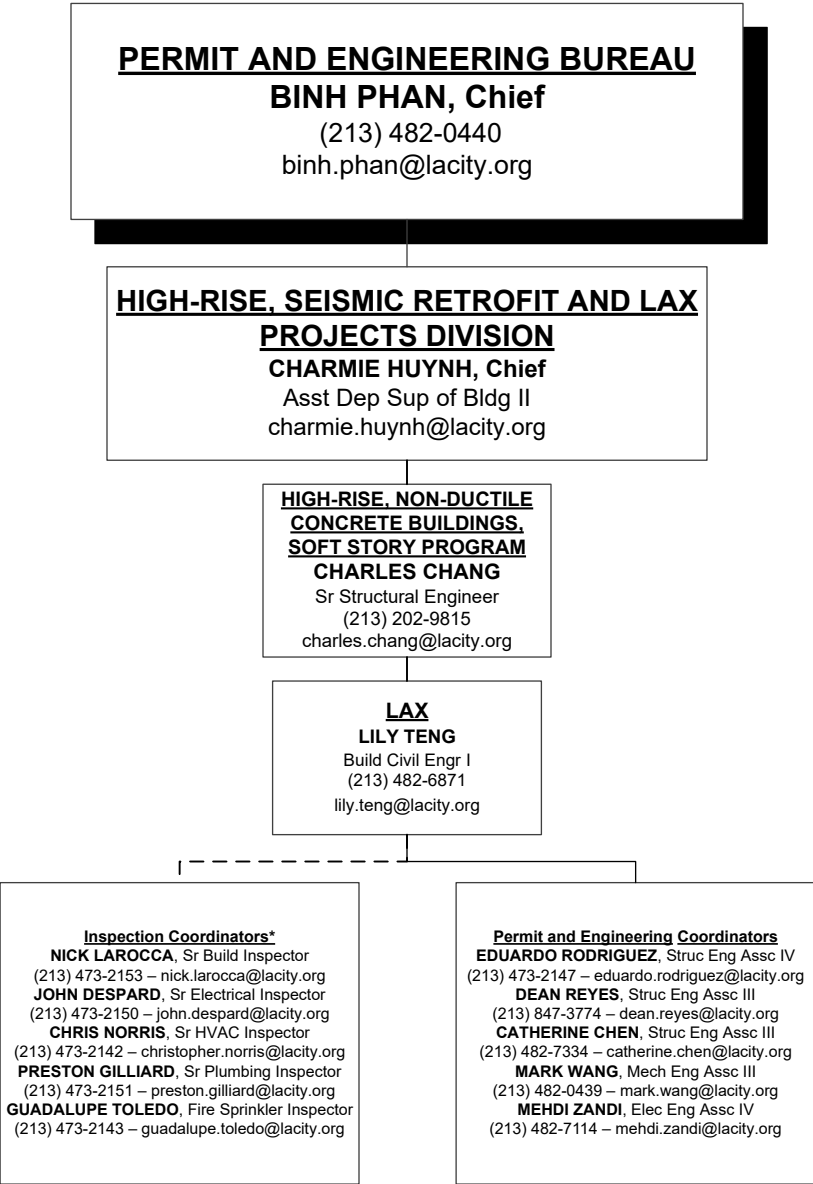
JOHN FRANCIA
Bldg Civil Engr I
213-202-5406
john.francia@lacity.org

STEVEN KIM
Bldg Civil Engr I
(818) 374-4325
steven.kim@lacity.org

TEO DIAZ
Bldg Civil Engr I
213-202-3433
teo.diaz@lacity.org

ANDY TUNG
Bldg Civil Engr I
(818) 374-4306
guang-min.tung@lacity.org

NICKAN HEDAYAT
Bldg Civil Engr I
(818) 374-4389
omid.hedayat@lacity.org



*Reporting to Inspection Bureau

PERMIT AND ENGINEERING BUREAU

BINH PHAN, Chief

(213) 482-0440

binh.phan@lacity.org

STRUCTURAL PLAN CHECK COUNTER

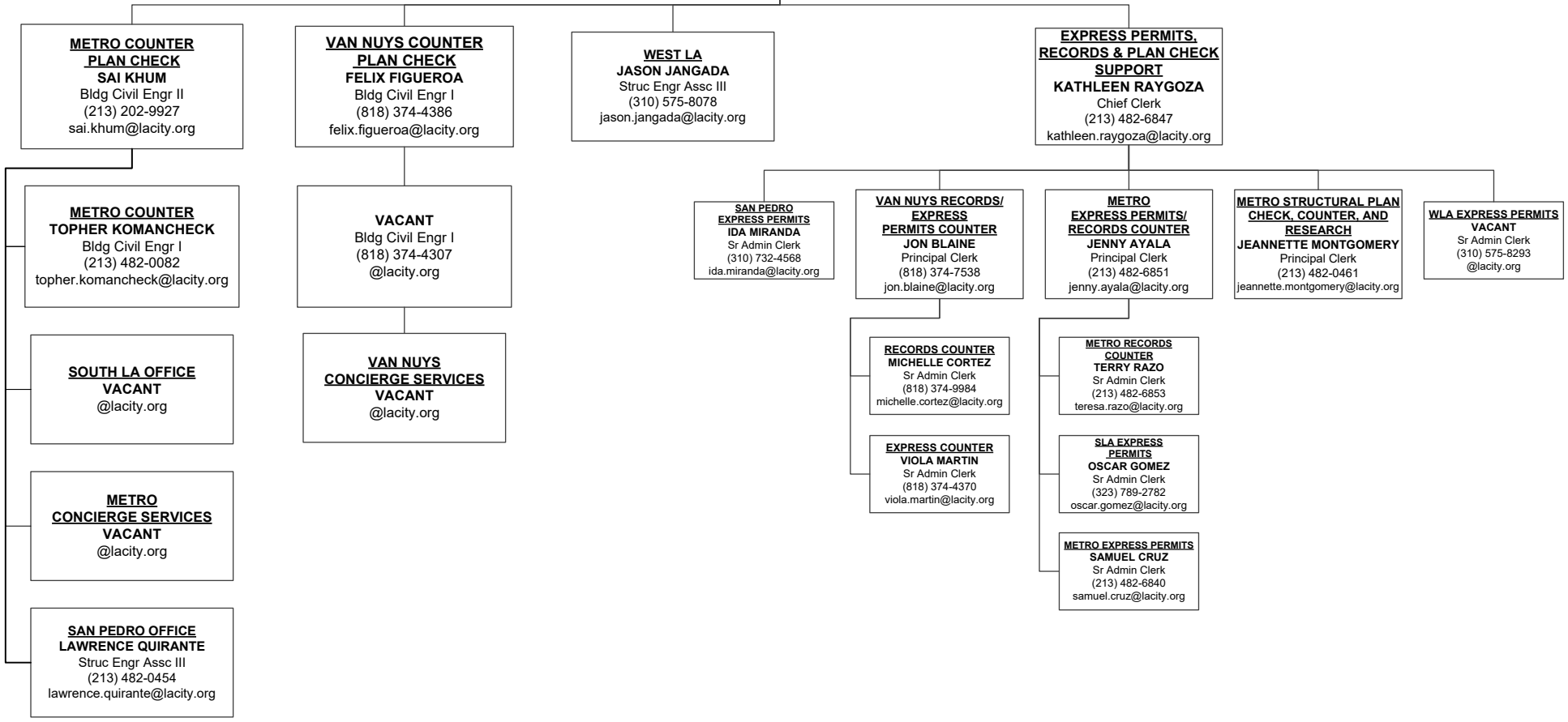
DIVISION

SHAHEN AKELYAN, Chief

Asst Dep Sup of Bldg II

(213) 482-0440

shahen.akelyan@lacity.org



PERMIT AND ENGINEERING BUREAU

BINH PHAN, Chief

(213) 482-0440

binh.phan@lacity.org

GREEN, ELECTRICAL & MECHANICAL DIVISION

ADEL SALAH EDDINE, Chief

Asst Dep Sup of Bldg II

(213) 482-0053

adel.salah-eddine@lacity.org

GREEN BUILDING VACANT

Bldg Civil Engr II
(213) 202-3450
@lacity.org

MECHANICAL PLAN CHECK VACANT

Bldg Mech Engr II
(213) 482-0410
@lacity.org

ELECTRICAL PLAN CHECK

NABIL MAALOUF
Bldg Elec Engr II
(213) 482-0052
nabil.maalouf@lacity.org

METRO ELECTRICAL PC CNTR/TEST LAB/EBEWE/LAX

NABIL MAALOUF
Bldg Elec Engr II
(213) 482-0052
nabil.maalouf@lacity.org

VAN NUYS MICHAEL SCOTT AYERS

Struc Engr Assc IV
(818) 374-4308
michaelscott.ayers@lacity.org

METRO MECHANICAL PLAN CHECK RAWAND ARYAN

Bldg Mech Engr I
(213) 482-0406
rawand.aryan@lacity.org

VAN NUYS MECHANICAL PLAN CHECK & COUNTER SAMEH BOLOUS

Bldg Mech Engr I
(818) 374-4388
sameh.bolous@lacity.org

METRO ELECTRICAL PLAN CHECK FRANCIS YSAGUIRRE

Elec Engr Assc IV
(213) 482-0064
francis.ysaguire@lacity.org

ELECTRICAL TEST LAB BEHROOZ HOORIANI

Elec Engr Assc IV
(213) 482-0045
behrooz.hooriani@lacity.org

WEST LA RICHARD GARCIA

Struc Engr Assc II
(310) 575-8095
richard.garcia@lacity.org

METRO MECHANICAL PLAN CHECK MIKE SHAHRESTANI

Mech Engr Assc IV
(213) 482-6940
mike.shahrestani@lacity.org

MECHANICAL TEST LAB IRENE POOL

Mech Engr Assc IV
(213) 482-0065
irene.pool@lacity.org

VAN NUYS MECHANICAL PLAN CHECK HAGOP MERTEKHANIAN

Mech Engr Assc IV
(818) 374-4372
hagop.mertekhanian@lacity.org

VAN NUYS ELECTRICAL PLAN CHECK & COUNTER ERIC GOSS

Elec Engr Assc III
(818) 374-4343
eric.goss@lacity.org

METRO ELECTRICAL PLAN CHECK COUNTER FRANCIS YSAGUIRRE

Elec Engr Assc IV
(213) 482-0064
francis.ysaguire@lacity.org

METRO PLAN CHECK NEGAR NEJAD

Struc Engr Assc II
(213) 482-0436
negar.nejad@lacity.org

METRO MECHANICAL PLAN CHECK (LAX) MARK WANG

Mech Engr Assc III
(213) 482-0439
mark.wang@lacity.org

METRO MECHANICAL PLAN CHECK MANUEL HERNANDEZ

Mech Engr Assc III
(213) 277-6442
manuel.hernandez@lacity.org

METRO MECHANICAL PLAN CHECK BILAL MARINI

Mech Engr Assc III
(213) 482-7081
bilal.moghrabimarinini@lacity.org

METRO MECHANICAL PLAN CHECK COUNTER CRISTINA ACEVEDO

Mech Engr Assc III
(213) 202-9902
cristina.acevedo-lelja@lacity.org

METRO ELECTRICAL PLAN CHECK (LAX) MEHDI ZANDI

Elec Engr Assc IV
(213) 482-7114
mehdi.zandi@lacity.org

INSPECTION BUREAU
PASCAL CHALLITA, Chief
 (213) 482-6712
 pascal.challita@lacity.org
DENVER (SHAWN) HARGIS, Assistant Chief
 (213) 482-0342
 denver.hargis@lacity.org

BUILDING INSPECTION/INSPECTION CASE MANAGEMENT (ICM)/ RESTAURANT & SMALL BUSINESS EXPRESS PROGRAM (RSBEP)
YERVAND CHAPANYAN
 Chief Inspector
 (213) 482-0492
 yervand.chapanyan@lacity.org

ELEVATOR/PRESSURE VESSEL INSPECTION
JAMES GARRISON
 Chief Inspector
 (213) 202-3467
 jim.garrison@lacity.org

MATERIALS CONTROL
ADAM BURGESS
 Principal Inspector
 (213) 202-9856
 adam.burgess@lacity.org

METRO
TERRY HERR
 Principal Inspector
 (213) 202-2784
 terry.herr@lacity.org

ELEVATOR INSPECTION
LARRY ISIDRO
 Principal Inspector
 (213) 202-9830
 larry.isidro@lacity.org

SPECIAL EVENTS/TENT INSPECTIONS
FELIX CEBALLOS
 Build Inspector
 (213) 482-7359
 felix.ceballos@lacity.org

SOFT STORY INSPECTION
TED RIES
 Sr Build Inspector
 (213) 482-0309
 ted.ries@lacity.org

ELEVATOR INSPECTION METRO
DAVID JENNINGS
 Sr Safety Eng Elev
 (213) 202-9832
 david.jennings@lacity.org

PRESSURE VESSEL INSPECTION CODE DESK METRO
JUAN CARLOS CHAVEZ
 Sr Safety Eng Press Ves
 (213) 202-9852
 juancarlos.chavez@lacity.org

CERTIFIED LICENSED CONTRACTOR (CLC)/ CERTIFIED WELDERS
TIM DAY
 Build Inspector
 (213) 202-9861
 tim.day@lacity.org

VAN NUYS
RICKEY JACKSON
 Principal Inspector
 (818) 374-1104
 rickey.jackson@lacity.org

ELEVATOR INSPECTION VN
JIMMIE GRABATIN
 Sr Safety Eng Elev
 (818) 374-1139
 jim.grabatin@lacity.org

PRESSURE VESSEL INSPECTION CODE DESK VN
RENATO FABIAN
 Sr Safety Eng Press Ves
 (818) 374-1149
 renato.fabian@lacity.org

TRADE LICENSING SECTION
CRYSTAL HERNANDEZ
 Principal Clerk
 (213) 482-0315
 crystal.hernandez@lacity.org

WEST LA
HENRY BAGHDASSARIAN
 Principal Inspector
 (310) 914-3905
 henry.baghdassarian@lacity.org

ELEVATOR INSPECTION WLA
VACANT
 Sr Safety Eng Elev
 (310) 914-3967
 @lacity.org

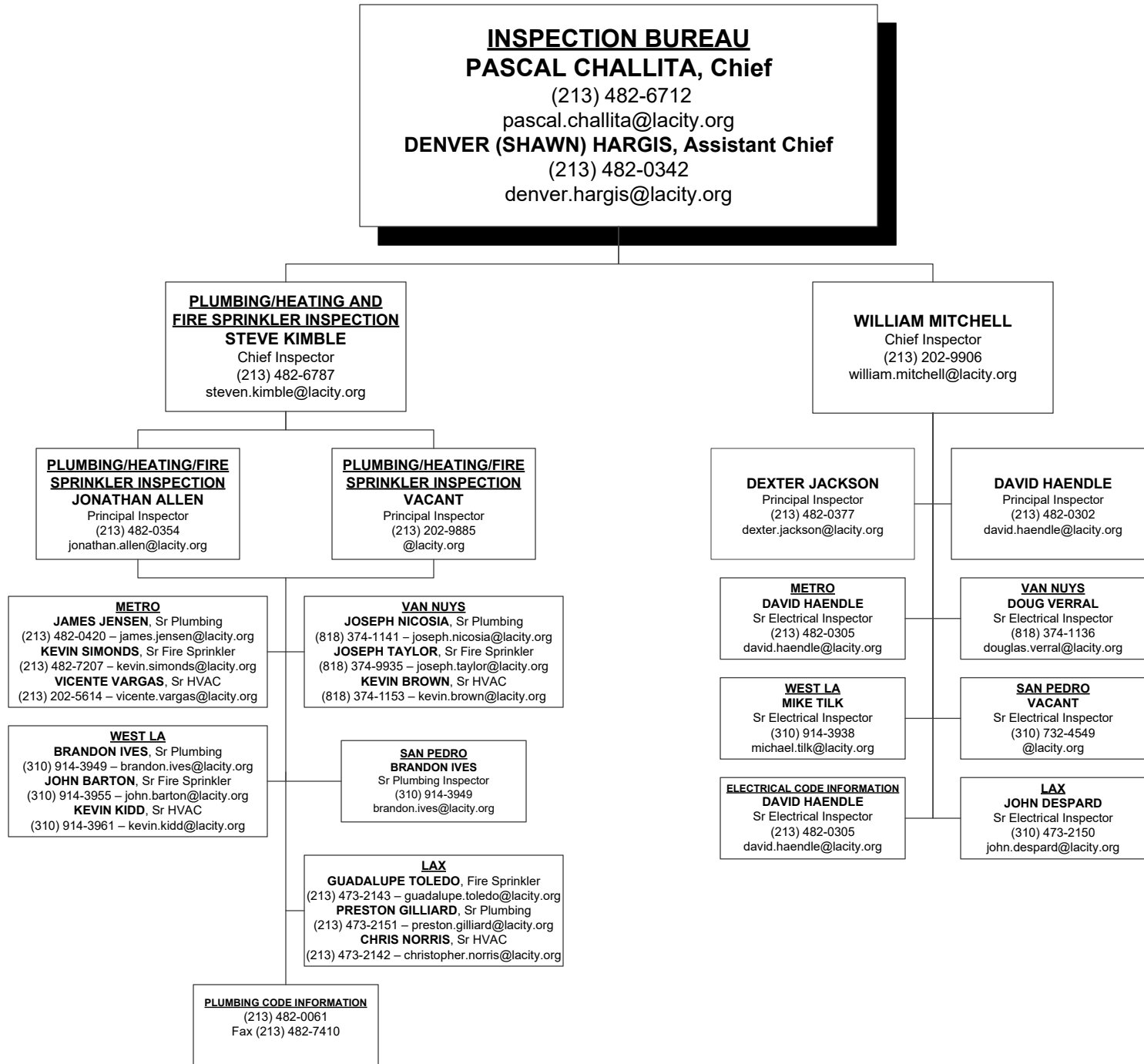
PRESSURE VESSEL INSPECTION CODE DESK WLA
KENNETH RAVELLO
 Sr Safety Eng Press Ves
 (310) 914-3973
 kenneth.ravello@lacity.org

SAN PEDRO
DAVID TSAU
 Sr Build Inspector
 (310) 732-4552
 david.tsau@lacity.org

ELEVATOR CODE INFORMATION & APPOINTMENTS
 (213) 202-9844
 Fax (213) 202-9922

LAX
NICK LAROCCA
 Sr Build Inspector
 (213) 473-2153
 nick.larocca@lacity.org

RSBEP/ICM ADMIN SUPPORT
VACANT
 Administrative Clerk
 @lacity.org



INSPECTION BUREAU
PASCAL CHALLITA, Chief
 (213) 482-6712
 pascal.challita@lacity.org
VICTOR CUEVAS, Assistant Chief
 (213) 202-9869
 victor.cuevas@lacity.org

RESIDENTIAL INSPECTION
RONALD (DEVIN) MYRICK
 Chief Inspector
 (213) 202-3469
 ronald.myrick@lacity.org

GRADING
J. ADOLFO ACOSTA
 Geotechnical Engineer III
 (213) 482-6967 Direct
 (213) 482-0480 General
 jesus.acosta@lacity.org

TRAINING AND EMERGENCY MANAGEMENT
LISA YANCEY
 Chief Inspector
 (213) 482-7097
 lisa.yancey@lacity.org

METRO/SAN PEDRO
D. BRIAN HAUFF
 Principal Inspector
 (213) 482-0323
 derold.hauff@lacity.org

VAN NUYS
MICHAEL SMITH
 Principal Inspector
 (818) 374-1155
 michael.smith@lacity.org

WLA
DANIEL ORRANTE
 Principal Inspector
 (310) 914-3904
 daniel.orrante@lacity.org

GRADING INSPECTION
SERGIO VALENZUELA
 Principal Inspector
 (213) 482-0397
 sergio.valenzuela@lacity.org

GEOTECHNICAL ENGINEERING
YING LIU
 Geotechnical Engineer II
 (213) 482-0494
 ying.liu@lacity.org

TRAINING

EMERG MGMT

CD #5C, 10, & #13
RUBEN SALAS
 Sr Build Mech Inspector
 (213) 482-6962
 ruben.salas@lacity.org

CD #12
 19040 Vanowen St.
JOHN JANSON
 Sr Build Mech Inspector
 (818) 774-4335
 john.janson@lacity.org

CD #5A
 11620 Wilshire Blvd. #1100
MICHAEL PELHAM
 Sr Build Mech Inspector
 (310) 914-3908
 michael.pelham@lacity.org

METRO
KIRK LINKLATER
 Sr Build Inspector
 (213) 482-0396
 kirk.linklater@lacity.org

GRADING PLAN CHECK
DAN RYAN EVANGELISTA
 Struc Engr Assc III
 (213) 482-6810
 dan.evangelista@lacity.org

ELECTRICAL
MATTHEW COTTER
 Sr Electrical Inspector
 (213) 482-6797
 matthew.cotter@lacity.org

VACANT
 Emergency Management
 Coordinator
 (213) 482-7370
 @lacity.org

VACANT
 (818) 374-1159
 Sr Build Mech Inspector
 @lacity.org

CD #7
 6262 Van Nuys Blvd
ROBERT GOLD
 Sr Build Mech Inspector
 (818) 374-1158
 robert.gold@lacity.org

CD #11
 11620 Wilshire Blvd. #1100
KENNETH NAGLE
 Sr Build Mech Inspector
 (310) 914-3906
 kenneth.nagle@lacity.org

VAN NUYS INSPECTION
VASIL MIHALEV
 Acting Sr Build Inspector
 (818) 374-4355
 vasil.mihalev@lacity.org

ENGINEERING GEOLOGY
DANIEL SCHNEIDERREIT
 Engineering Geologist II
 (213) 482-0430
 daniel.schneiderreit@lacity.org

HVAC
ARA HAGHNAZARIAN
 Build Mech Inspector
 (213) 482-6795
 ara.haghnazarian@lacity.org

ED GARCIA
 Sr Build Mech Inspector
 (213) 482-6786
 edward.garcia@lacity.org

CD #1 & #14
 221 N. Figueroa, 8th Fl.
CHARLES BOGHOSKHAN
 Sr Build Mech Inspector
 (213) 202-3445
 charles.boghoskhan@lacity.org

CD #5B
 6262 Van Nuys Blvd.
MATT KELLERMAN
 Sr Build Mech Inspector
 (818) 374-1157
 matt.kellerman@lacity.org

CD #5D
 11620 Wilshire Blvd. #1100
VACANT
 Sr Build Mech Inspector
 (310) 914-3907
 @lacity.org

WEST LA INSPECTION
MICHAEL TEMPLE
 Sr Build Inspector
 (310) 914-3934
 michael.temple@lacity.org

BUILDING
JOHN DODGE
 Sr Build Inspector
 (213) 482-0386
 john.dodge@lacity.org

METRO/VN/WLA/SP INVESTIGATIONS
VACANT
 Sr Build Inspector
 (213) 482-0345
 @lacity.org

CD #8 & #9
 221 N. Figueroa, 8th Fl.
HAL FULTZ
 Sr Build Mech Inspector
 (213) 202-3211
 hal.fultz@lacity.org

TRACTS
 19040 Vanowen St
SEAN WIRCH
 Sr Build Mech Inspector
 (818) 774-4352
 sean.wirch@lacity.org

CD #6
 11620 Wilshire Blvd. #1100
RICHARD STEINBACH
 Sr Build Mech Inspector
 (310) 914-3909
 richard.steinbach@lacity.org

SAN PEDRO INSPECTION
MICHAEL TEMPLE
 Sr Building Inspector
 (310) 914-3934
 michael.temple@lacity.org

PLUMBING
ARMANDO PULIDO
 Sr Plumbing Inspector
 (213) 482-0346
 armando.pulido@lacity.org

HIGH RISE RETROFIT/ EQ INSPECTION
VACANT
 Sr Build Inspector
 (213) 482-0345
 @lacity.org

CD #4
 221 N. Figueroa, 8th Fl.
CRAIG DAVIS
 Sr Build Mech Inspector
 (213) 923-6164
 craig.davis@lacity.org

METRO TRACTS
SCOTT FINNILA
 Sr Build Mech Inspector
 (213) 202-3122
 scott.finnila@lacity.org

CD #2
 6262 Van Nuys Blvd
DAVE MATSON
 Sr Build Mech Inspector
 (818) 374-1159
 dave.matson@lacity.org

RESIDENTIAL/ZONING
VACANT
 Sr Build Mech Inspector
 (213) 482-7278
 @lacity.org

INVESTIGATIONS
LINN MELVIN
 Build Mech Inspector
 (213) 482-0371
 trey.melvin@lacity.org

CD #15
 638 S. Beacon St.
DONALD CRICHLLOW
 Sr Build Mech Inspector
 (213) 923-3439
 donald.crichlow@lacity.org

CD #3
 19040 Vanowen St.
SEAN WIRCH
 Sr Build Mech Inspector
 (818) 774-4352
 sean.wirch@lacity.org

TRAINING COORDINATOR
FRED EALEY
 Management Analyst
 (213) 482-7293
 fred.ealey@lacity.org

CODE ENFORCEMENT BUREAU
CATHERINE NUEZCA-GABA, Chief

(213) 252-3931
 catherine.nuezcagaba@lacity.org
ERIC JAKEMAN, Assistant Chief
 (213) 252-3976
 eric.jakeman@lacity.org

FAITH MAULUPE
 Principal Clerk
 (213) 252-3376
 faith.maulupe@lacity.org

GENERAL ENFORCEMENT & SPECIALTY/SIGNS INSPECTION
JEFF NAPIER
 Chief Inspector/Public Information Officer
 (213) 263-6846
 jeff.napier@lacity.org

GENERAL ENFORCEMENT, ANNUAL INSPECTION MONITORING, PROACTIVE CODE ENFORCEMENT, & VACANT BUILDING ABATEMENT
JACK CONGER
 Chief Inspector
 (213) 252-3310
 jack.conger@lacity.org

CITYWIDE SIGNS
DANIEL SANCHEZ
 Principal Inspector
 (213) 252-3926
 daniel.sanchez@lacity.org

CENTRAL REGION GENERAL ENFORCEMENT
DANIEL SANCHEZ
 Principal Inspector
 (213) 252-3926
 daniel.sanchez@lacity.org

SOUTH REGION GENERAL ENFORCEMENT
BRUCE TODD
 Principal Inspector
 (213) 978-4502
 bruce.todd@lacity.org

CITYWIDE ANNUAL INSPECTION MONITORING
DAVID JAMES
 Principal Inspector
 (818) 374-9806
 david.james@lacity.org

NORTH REGION GENERAL ENFORCEMENT
DAVID JAMES
 Principal Inspector
 (818) 374-9806
 david.james@lacity.org

CITYWIDE PACE 2 & 3
ARMOND GREGORYONA
 Principal Inspector
 (213) 252-3082
 armond.gregoryona@lacity.org

CITYWIDE VBA & FORECLOSURE REGISTRY PROGRAM
ARMOND GREGORYONA
 Principal Inspector
 (213) 252-3082
 armond.gregoryona@lacity.org

SIGN ENFORCEMENT
MARK RUDE
 Sr Build Mech Inspector
 (213) 252-3909
 mark.rude@lacity.org

CD #1
AUGUSTUS ALBAS
 Sr Build Mech Inspector
 (213) 252-3038
 augustus.albas@lacity.org

CD #8
DANIEL GONZALEZ
 Sr Build Mech Inspector
 (213) 978-4504
 daniel.a.gonzalez@lacity.org

NORTH REGION
WILLIE ROSS
 Sr Build Mech Inspector
 (818) 374-9837
 willie.ross@lacity.org

CD #2
DAVID HICKMAN
 Sr Build Mech Inspector
 (818) 230-0288
 david.hickman@lacity.org

PRO-ACTIVE CODE ENFORCEMENT 2
VACANT
 Sr Build Mech Inspector
 (213) 252-3352
 @lacity.org

VACANT BUILDING ABATEMENT
SHAWN ESHBACH
 Sr Build Mech Inspector
 (213) 252-3962
 shawn.eshbach@lacity.org

NEW CONSTRUCTION
MARK RUDE
 Sr Build Mech Inspector
 (213) 252-3909
 mark.rude@lacity.org

CD #4
ROBERT MINASSIANS
 Sr Build Mech Inspector
 (213) 482-0469
 robert.minassians@lacity.org

CD #9
SAM PORTILLO
 Sr Build Mech Inspector
 (213) 978-4495
 sam.portillo@lacity.org

METRO REGION
JASON SUMMERS
 Sr Build Inspector
 (213) 252-3041
 jason.summers@lacity.org

CD #3
ROBERT SUNSERI
 Sr Build Mech Inspector
 (818) 374-9857
 robert.sunseri@lacity.org

PRO-ACTIVE CODE ENFORCEMENT 3
RICK CARPENTER
 Sr Build Mech Inspector
 (213) 252-3349
 ulric.carpenter@lacity.org

OFF-SITE SIGNS PERIODIC INSPECTION PROGRAM
MARK RUDE
 Sr Build Mech Inspector
 (213) 252-3909
 mark.rude@lacity.org

CD #5
JOEL WILLIAMS
 Sr Build Mech Inspector
 (213) 252-3049
 joel.n.williams@lacity.org

CD #10
VACANT
 Sr Build Mech Inspector
 (213) 252-3964
 @lacity.org

CD #6
CHRIS LEKO
 Sr Build Mech Inspector
 (818) 374-9858
 christopher.leko@lacity.org

CD #13
ROBERT CHAVEZ
 Sr Build Mech Inspector
 (213) 252-3977
 robert.chavez@lacity.org

CD #11
JOHN MATTILLO
 Sr Build Mech Inspector
 (213) 978-4498
 john.mattillo@lacity.org

CD #7
MARK BEVELAQUA
 Sr Build Inspector
 (818) 374-9820
 mark.bevelaqua@lacity.org

CD #14
MARK VAN SLOOTEN
 Sr Build Mech Inspector
 (323) 526-9348
 mark.vanslooten@lacity.org

CD #15
PAUL BECKER
 Sr Build Mech Inspector
 (310) 732-4530
 paul.becker@lacity.org

CD #12
PIERRE VEGA
 Sr Build Mech Inspector
 (818) 374-9853
 pierre.vega@lacity.org

LEGAL LIAISON
DA LIU
 Sr Build Mech Inspector
 (213) 252-3393
 da.liu@lacity.org

LEGAL LIAISON
CLAUDIO MORENO
 Sr Build Mech Inspector
 (213) 978-4503
 claudio.moreno@lacity.org

LEGAL LIAISON
VACANT
 (818) 374-9859
 @lacity.org

CODE ENFORCEMENT BUREAU
CATHERINE NUEZCA-GABA, Chief
(213) 252-3931
catherine.nuezcagaba@lacity.org
ERIC JAKEMAN, Assistant Chief
(213) 252-3976
eric.jakeman@lacity.org

ENVIRONMENTAL AFFAIRS DIVISION
LOCAL ENFORCEMENT AGENCY
DAVID THOMPSON
Environmental Affairs Officer
(213) 252-3932
david.thompson@lacity.org

PERMITTING SECTION
JOSE GUTIERREZ
Environmental Supervisor II
(213) 252-3348
jose.gutierrez@lacity.org

INSPECTION SECTION
MARTIN ROSEN
Environmental Supervisor II
(213) 252-3936
martin.rosen@lacity.org

HEALTH, SAFETY & ADMINISTRATION
ANDY KAO
Industrial Hygienist
(213) 252-3967
andy.kao@lacity.org

RESOURCE MANAGEMENT BUREAU

ANA MAE YUTAN, Chief

(213) 482-6703

anamae.yutan@lacity.org

Emilio Rodriguez, Assistant Chief

Chief Mgmt Analyst

emilio.rodriguez@lacity.org

VERONICA E. SALUMBIDES,

Assistant Chief

Dept Chief Accountant IV

(213) 482-6782

veronica.salumbides@lacity.org

BUDGET & GENERAL ADMINISTRATIVE SERVICES DIVISION

CONTRACTS AND APPLICATION SERVICES DIVISION

RECORDS MANAGEMENT DIVISION

FINANCIAL SERVICES DIVISION

ZACHARY DE CORSE

Sr Mgmt Analyst II
(213) 482-6746

zachary.decorse@lacity.org

TONY PELAEZ

Sr Mgmt Analyst II
(213) 482-6766

tony.pelaez@lacity.org

CHAUNTEL MARTIN

Chief Clerk
(213) 482-6560

chauntel.martin@lacity.org

VACANT

Principal Accountant I
(213) 482-6892
@lacity.org

VACANT

Principal Accountant I
(213) 482-6804
@lacity.org

SOMAPUN PONGQUAN

Sr Mgmt Analyst I
(213) 482-6748

somapun.pongquan@lacity.org

VACANT

Sr Mgmt Analyst I
(213) 482-6740
@lacity.org

VACANT

Principal Clerk
(213) 482-6560
@lacity.org

ACCOUNTS RECEIVABLE

JEREMY CORONEL

Sr Accountant I
(213) 482-7347
jeremy.coronel@lacity.org

CASHIERING SERVICES

VICTORIA VASQUEZ

Chief Cashier
(213) 482-6953
mariavictoria.vasquez@lacity.org

BUDGET & GENERAL ADMINISTRATIVE SERVICES MAIN LINE

(213) 482-6776
LADBS.ASD@lacity.org

INTERNET DOCUMENT IMAGING SYSTEM

JOSHUA BLANCHER
Sr Admin Clerk
(213) 482-7143
joshua.blancher@lacity.org

EUSA VALDEZ
Sr Admin Clerk
(213) 482-6885
eusa.valdez@lacity.org

SUBJECT SPECIALTY CALL GROUP

LORENA ESPINOZA
Sr Admin Clerk
(213) 482-6549
lorena.espinoza@lacity.org

RESIDENTIAL PROPERTY REPORTS

SUNEETA ATYAM
Sr Admin Clerk
(213) 482-6772
suneeta.atyam@lacity.org

ADMINISTRATIVE SERVICES SUPPORT

APRIL DOUGLASS-LAWSON
Sr Admin Clerk
(213) 482-6710
april.douglass-lawson@lacity.org

LIENS

CHARLES KALIBBALA

Sr Accountant I
(213) 202-9829
charles.kalibbala@lacity.org

ACCOUNTS PAYABLE

EMILY HU

Sr Accountant I
(213) 482-6534
emily.hu@lacity.org

SUPPLIES

JOHN BOROUGH

Store Keeper II
(213) 482-6813
john.borough@lacity.org

GENERAL ACCOUNTING

EMMA PANGILINAN

Sr Accountant II
(213) 482-7347
emma.pangilinan@lacity.org

PAYROLL

ANDREW BYRNE

Payroll Supervisor
(213) 482-6538
andrew.byrne@lacity.org

TECHNOLOGY SERVICES BUREAU

VACANT, Chief

(213) 482-0001

@lacity.org

GREG WILCOX, Director of Systems

(213) 482-0031

greg.wilcox@lacity.org

ADMINISTRATIVE DIVISION

HANA NGO

Management Analyst
(213) 482-7441
hana.ngo@lacity.org

DIANE STINER

Sr. Admin. Clerk
(213) 482-7421
diane.r.stiner@lacity.org

CUSTOMER ENGAGEMENT DIVISION

MINH ONG

Build Civil Engr II
(213) 482-0029
minh.ong@lacity.org

BUSINESS ANALYSIS SERVICES

MARK CAYABYAB

Sr Sys Analyst I
(213) 482-0027
mark.cayabyab@lacity.org

SUBJECT MATTER EXPERT SERVICES

WILL MCCONNAUGHY

Sr. Build Mech Inspector
(213) 482-0049
will.mcconnaughy@lacity.org

WEBSITE SUPPORT

VACANT
(213) 482-0031
@lacity.org

APPLICATION SERVICES DIVISION

JEANNE LY

Systems Programmer III
(213) 482-0046
jeanne.ly@lacity.org

DATA AND SYSTEM SUPPORT

VACANT

Database Architect
(213) 482-0015
@lacity.org

DATA AND SYSTEMS SUPPORT

VACANT

Database Architect
(213) 482-0031
@lacity.org

OPERATIONS AND INFRASTRUCTURE DIVISION

KENNETH SMITH

Sr Sys Analyst II
(213) 202-3101
kenneth.smith@lacity.org

INFRASTRUCTURE AND DEVOPS SUPPORT

LING KE

Systems Programmer III
(213) 482-0026
ling.ke@lacity.org

NETWORK AND SECURITY SUPPORT

VACANT

Systems Programmer III
(213) 202-9962
@lacity.org

OPERATIONS

RONALD CARVAJAL

Sr Sys Analyst I
(213) 482-6535
ron.carvajal@lacity.org

APPLICATION DEVELOPMENT DIVISION

SHANNON HAAS

Sr Sys Analyst II
(213) 482-0050
shannon.haas@lacity.org

PERMITTING SYSTEM

WEI BIN HE

Programmer Analyst V
(213) 482-0037
wei.he@lacity.org