

ACCESSIBILITY DETAILS FOR CURBS, BLENDED TRANSITIONS, ISLANDS AND DETECTABLE WARNINGS

GENERAL. Curb ramps, blended transitions and islands on accessible routes shall comply with Section 11B- 406. Curb ramps may be perpendicular, parallel, or a combination of perpendicular and parallel.

LANDINGS. Landings shall be provided at the tops of curb ramps and blended transitions. The landing clear length shall be 48 inches (1219 mm) minimum. The landing clear width shall be at least as wide as the curb ramp, excluding any flared sides, or the blended transition leading to the landing. **The slope of the landing in all directions shall be 1:48 maximum.**

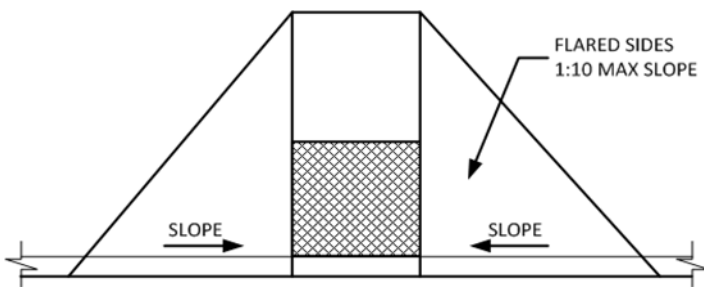


FIGURE 11B-406.2.2
SIDES OF CURB RAMPS

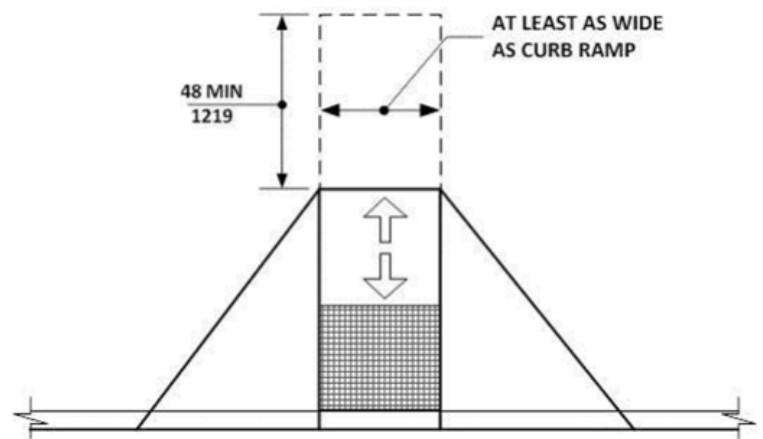


FIGURE 11B-406.5.3
LANDINGS AT THE TOP OF CURB RAMPS

TURNING SPACE. A turning space 48 inches (1219 mm) minimum by 48 inches (1219 mm) minimum shall be provided at the bottom of the curb ramp. The slope of the turning space in all directions shall be **1:48 max.**

LOCATION. Curb ramps and the flared sides of curb ramps shall be located so that they do not project into vehicular traffic lanes, parking spaces, or parking access aisles. Curb ramps at marked crossings shall be wholly contained within the markings, excluding any flared sides.

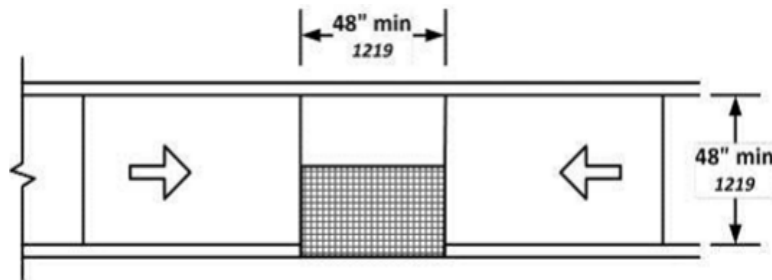


FIGURE 11B-406.3.2
PARALLEL CURB RAMPS

THESE DIAGRAMS ILLUSTRATES THE SPECIFIC REQUIREMENTS OF THESE REGULATIONS AND ARE INTENDED ONLY AS AN AID FOR BUILDING DESIGN AND CONSTRUCTION.

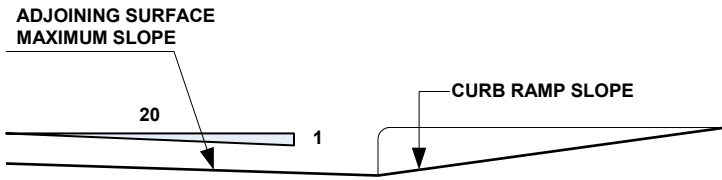


FIGURE 11B-406.5.8
COUNTER SLOPE OF SURFACES ADJACENT TO CURB RAMPS

Counter slope of adjoining gutters and road surfaces immediately adjacent to and within 24 inches (610 mm) of the curb ramp shall not be steeper than 1:20. The adjacent surfaces at transitions at curb ramps to walks, gutters, and streets shall be at the same level. **11B-406.5.8**

Clear space at diagonal curb ramps. The bottom of diagonal curb ramps shall have a clear space 48 inches (1219 mm) minimum outside active traffic lanes of the roadway. Diagonal curb ramps provided at marked crossings shall provide the 48 inches (1219 mm) minimum clear space within the markings. **11B-406.5.9**

Diagonal curb ramps. Diagonal or corner type curb ramps with returned curbs or other well-defined edges shall have the edges parallel to the direction of pedestrian flow. Diagonal curb ramps with flared sides shall have a segment of curb 24 inches (610 mm) long minimum located on each side of the curb ramp and within the marked crossing. **FIGURE 11B-406.5.10**

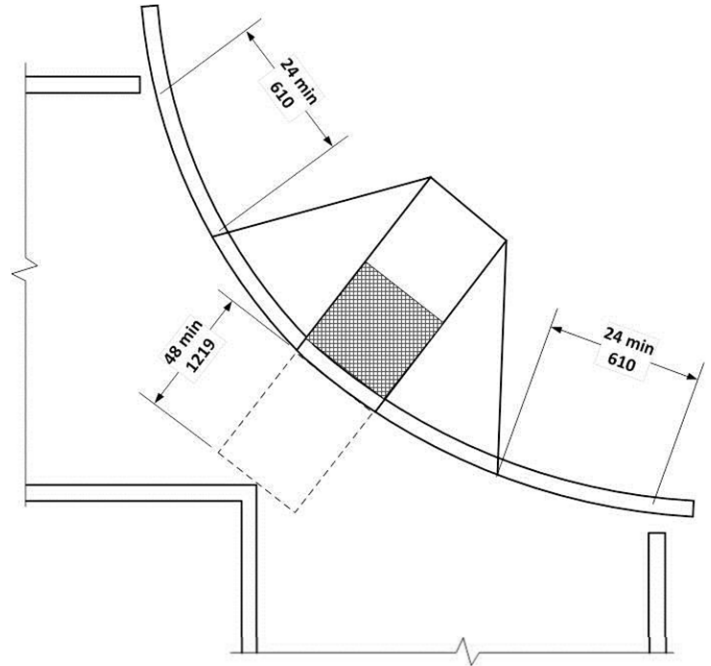
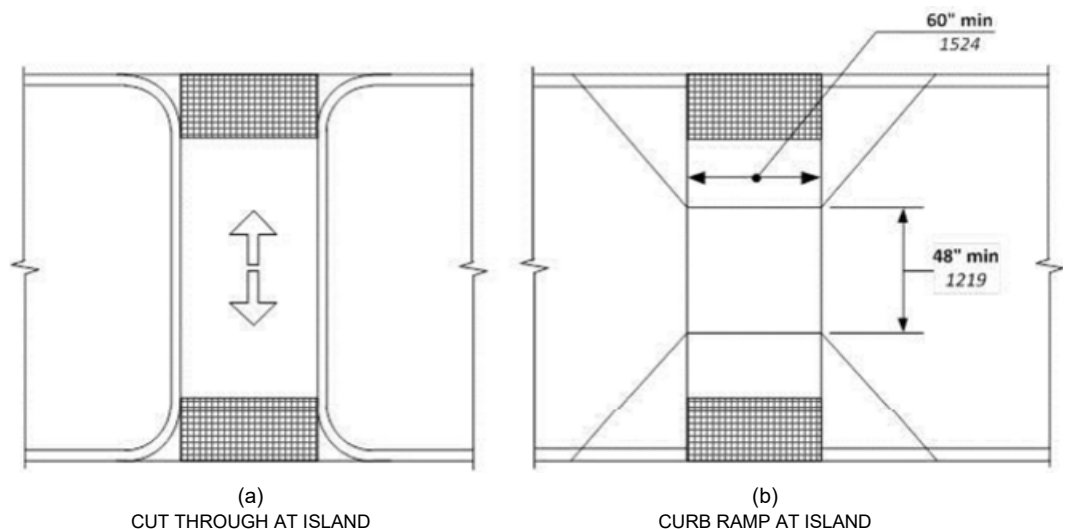


FIGURE 11B-406.5.10
DIAGONAL OR CORNER TYPE CURB RAMPS

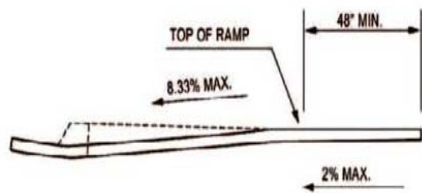
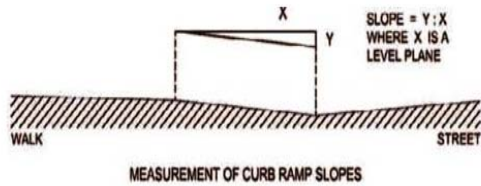
11B-406.6 Islands. Raised islands in crossings shall be cut through level with the street or have curb ramps at both sides. The clear width of the accessible route at islands shall be 60 inches (1524 mm) wide minimum. Where curb ramps are provided, they shall comply with Section 11B-406. Landings complying with Section 11B-406.5.3 and the accessible route shall be permitted to overlap. Islands shall have detectable warnings complying with Section 11B-705.

FIGURE 11B-406.6
ISLANDS IN CROSSINGS

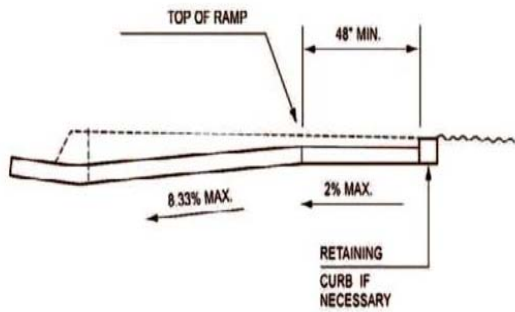


THESE DIAGRAMS ILLUSTRATES THE SPECIFIC REQUIREMENTS OF THESE REGULATIONS AND ARE INTENDED ONLY AS AN AID FOR BUILDING DESIGN AND CONSTRUCTION.

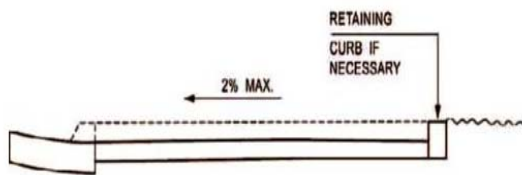
CURB RAMP



SECTION A-A



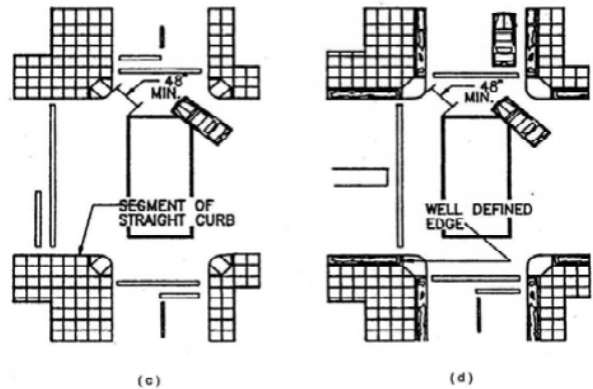
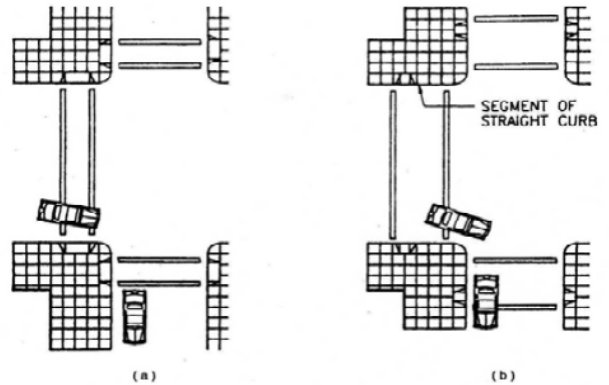
SECTION B-B
 DEPRESS ENTIRE SIDEWALK AS REQUIRED



SECTION C-C

THESE DIAGRAMS ILLUSTRATE THE SPECIFIC REQUIREMENTS OF THESE REGULATIONS AND ARE INTENDED ONLY AS AN AID FOR BUILDING DESIGN AND CONSTRUCTION.

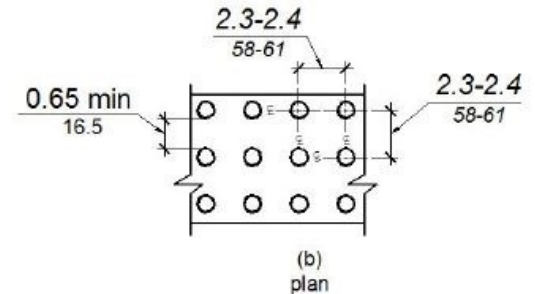
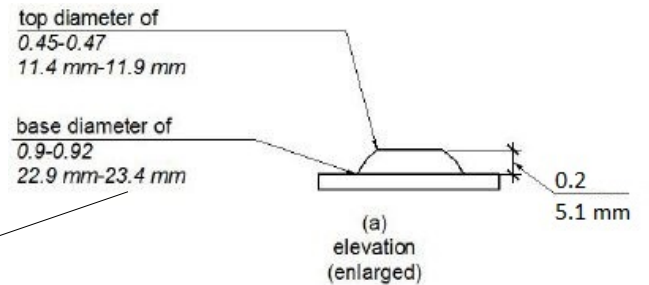
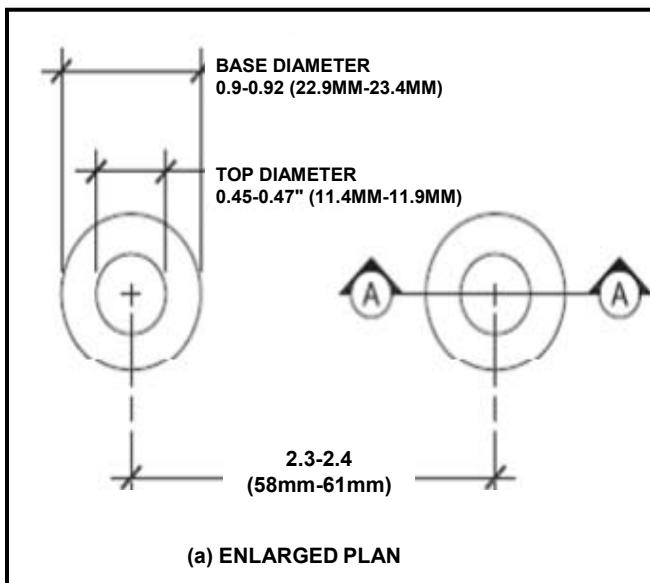
CURB SECTIONS



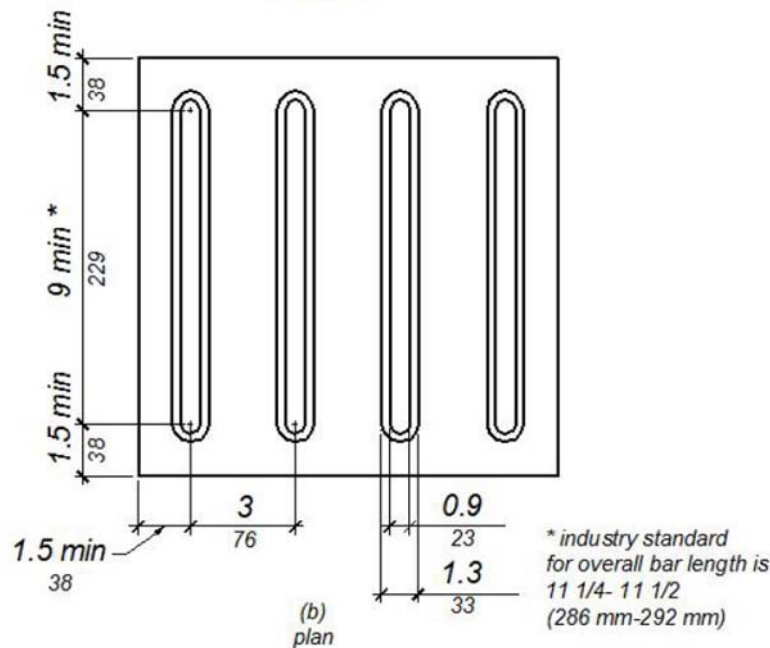
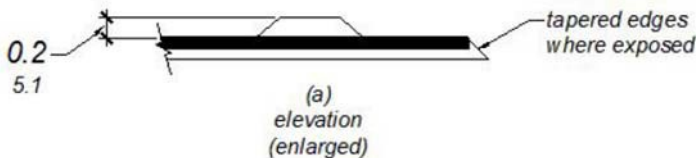
CURB RAMPS AT MARKED CROSSING

THESE DIAGRAMS ILLUSTRATES THE SPECIFIC REQUIREMENTS OF THESE REGULATIONS AND ARE INTENDED ONLY AS AN AID FOR BUILDING DESIGN AND CONSTRUCTION.

DETECTABLE WARNING SURFACE



**FIGURE 11B-705.1
 SIZE AND SPACING OF TRUNCATED DOMES**



**FIGURE 11B-705.2
 DETECTABLE DIRECTIONAL TEXTURE**

Detectable warnings shall consist of a surface of truncated domes and shall comply with Section 11B-705.

11B-705.1.1.3 Contrast. Detectable warning surfaces shall contrast visually with adjacent walking surfaces either light-on-dark, or dark-on-light. The material used to provide contrast shall be an integral part of the surface. Contrast shall be determined by:
 Contrast = [(B1-B2)/B1] * 100 percent where B1 = light reflectance value (LRV) of the lighter area and B2 = light reflectance value (LRV) of the darker area.

Exception: Where the detectable warning surface does not adequately contrast with adjacent surfaces, a 1 inch (25 mm) wide black strip shall separate yellow detectable warning from adjacent surfaces.

11B-705.1.1.4 Resiliency. Detectable warning surfaces shall differ from adjoining surfaces in resiliency or sound-on-cane contact.

Exception: Detectable warning surfaces at curb ramps, islands or cut-through medians shall not be required to comply with Section 11B- 705.1.1.4

11B-705.1.1.5 Color. Detectable warning surfaces shall be yellow conforming to FS 33538 of Federal Standard 595C.

Exception: Detectable warning surfaces at curb ramps, islands or cut-through medians shall not be required to comply with Section 11B- 705.1.1.5.

11B-705.2 Detectable directional texture. Detectable directional texture at transit boarding platforms shall comply with Figure 11B-705.2 and shall be 0.1 inch (2.5 mm) in height that tapers off to 0.04 inch (1.0 mm), with bars raised 0.2 inch (5.1 mm) from the surface. The raised bars shall be 1.3 inches (33 mm) wide and 3 inches (76 mm) from center-to center of each bar. This surface shall differ from adjoining walking surfaces in resiliency or sound-on-cane contact. The color shall be yellow conforming to Federal Color No. 33538. This surface will be placed directly behind the yellow detectable warning texture specified in Section 11B- 705.1.2.1, aligning with all doors of the transit vehicles where passengers will embark. The width of the directional texture shall be equal to the width of the transit vehicle's door opening. The depth of the texture shall not be less than 36 inches (914 mm).