



ORGANIZATIONAL CHART & TELEPHONE DIRECTORY

This directory is designed to:

1. Give users direct access to the Department's top-level management and supervisory personnel, and
2. To see where the managers and supervisors fit into the Department's chain-of-command structure.

FOR AUTOMATED INSPECTION REQUESTS ONLY,
YOU MAY CALL TOLL FREE FROM ANYWHERE
IN LOS ANGELES COUNTY:

1-888-LA-4-BUILD

OR

OUTSIDE LOS ANGELES COUNTY

213-482-0000

TDD Line 888-833-8389

FOR ALL OTHER SERVICES OR INFORMATION WITHIN
THE CITY OF LOS ANGELES

3-1-1

OR

OUTSIDE LOS ANGELES CITY

1-213-473-3231

For more information regarding the Los Angeles Department of Building and Safety, please visit www.ladbs.org.



LADBS ADMINISTRATIVE/HEADQUARTER OFFICES
201 NORTH FIGUEROA STREET, SUITE 1000
LOS ANGELES, CALIFORNIA 90012

PERMIT/DEVELOPMENT SERVICES OFFICES

- **DEVELOPMENT SERVICES CASE MANAGEMENT OFFICE**
201 N. Figueroa Street, Suite 1030
Los Angeles, CA 90012

- **METRO DEVELOPMENT SERVICES CENTER**
201 N. Figueroa Street, 4th Floor Los Angeles, CA 90012
Permit and Engineering Bureau Administration – 10th Floor
Records Research and Express Permits – 1st Floor
Plan Check – 4th Floor (Electrical and Mechanical)
Electrical and Mechanical Engineering – 5th Floor
Green Buildings – 5th Floor
Disabled Access Appeals – 8th Floor
Structural Engineering Research – 8th Floor
Boards of Building and Safety Commissioners – 10th Floor
Engineering Plan Check – 10th Floor

- **VAN NUYS DEVELOPMENT SERVICES CENTER**
6262 Van Nuys Boulevard, 2nd Floor, Room 251
Van Nuys, CA 91401

- **WEST LOS ANGELES DEVELOPMENT SERVICES CENTER**
1828 Sawtelle Boulevard, 2nd Floor
Los Angeles, CA 90025

- **SAN PEDRO DEVELOPMENT SERVICES CENTER**
638 S. Beacon Street, 2nd Floor, San Pedro, CA 90731

- **SOUTH LOS ANGELES DEVELOPMENT SERVICES CENTER**
8475 S. Vermont Avenue, 2nd Floor
Los Angeles, CA 90044

- **TEST LAB**
Electrical Testing Lab
201 N. Figueroa Street, Suite 500, Los Angeles, CA 90012

Mechanical Testing Lab
201 N. Figueroa Street, Suite 500, Los Angeles, CA 90012

INSPECTION OFFICES

- **INSPECTION BUREAU**
221 N. Figueroa Street, 7th, 8th and 12th Floors
Los Angeles, CA 90012
Bureau Management – 8th Floor

Commercial Inspection, Building Insp. Division - 7th Floor
(Electrical, HVAC, Plumbing, Fire Sprinkler & Mechanical)
Materials Control – 7th Floor
Special Events – 7th Floor
Investigations/Earthquake Safety/Hi-Rise Retrofit – 7th Floor
Certified Licensing Contractor – 7th Floor
Trade Licensing – 7th Floor
Residential Inspection – 8th Floor
Elevator and Pressure Vessels – 8th Floor
Inspection Case Management – 8th Floor
Restaurant and Small Business Express Program (RSBEP) – 8th Floor
Inspections and Investigations – 8th Floor
Training and Emergency Management Division – 8th Floor
Grading and Engineering Inspection – 12th Floor

- **VAN NUYS INSPECTION DIVISION**
6262 Van Nuys Boulevard, Ste. 200
Van Nuys, CA 91401

19040 Vanowen Street
Reseda, CA 91335
Residential Inspection

- **WEST LOS ANGELES INSPECTION DIVISION**
11620 Wilshire Boulevard, Suite 1100
Los Angeles, CA 90025

- **SAN PEDRO COMMERCIAL & RESIDENTIAL INSPECTION DIVISIONS**
638 S. Beacon Street, 2nd Floor
San Pedro, CA 90731

CODE ENFORCEMENT OFFICES

- **CODE ENFORCEMENT BUREAU**
221 N. Figueroa Street, 11th and 12th Floors
Los Angeles, CA 90012

CENTRAL REGION
Centralized Specialty Division – 11th Floor
Administration and Liens – 11th Floor
Pro Active Code Enforcement – 11th Floor
Vacant Building Abatement – 11th Floor
Signs-Enforcement & New – 11th Floor
Off-Site Signs Program – 11th Floor
General Code Enforcement – 11th Floor
Annual Inspection Monitoring – 11th Floor
Local Enforcement Agency – 12th Floor

2130 E. 1st Street – 4th Floor, Suite 2101
Los Angeles, CA 90033

CEIS Development Team
201 N. Figueroa Street, 9th Floor
Los Angeles, CA 90012

- **NORTH REGION**
Van Nuys City Hall
14410 Sylvan Street, Suite 105
Los Angeles, CA 91401

- **SOUTH REGION**
8475 S. Vermont Avenue, Suite 200
Los Angeles, CA 90044

4301 S. Central Avenue
Los Angeles, CA 90011

221 N Figueroa Street, 11th Floor
Los Angeles, CA 90012

7166 Manchester Avenue, Suite 10A
Los Angeles, CA 90045

638 Beacon Street, Suite 276
San Pedro, CA 90731

TELEPHONE DIRECTORY INDEX

DEPARTMENT OF BUILDING AND SAFETY

Executive and Bureau Management	Chart 1
Government and Community Relations Management	Chart 2
Development Services Case Management	
Case Management	Chart 3
Preliminary Review	Chart 3
LAX	Chart 3
Personnel Services	Chart 4

PERMIT AND ENGINEERING BUREAU

Permit and Engineering Bureau Management	Chart 5
Structural Plan Check Division	
Metro Plan Check	Chart 6
Van Nuys District Office	Chart 6
West LA District Office	Chart 6
High-Rise and Seismic Retrofit Division	
Soft-Story Retrofit Program	Chart 7
High-Rise and Non-Ductile Concrete Buildings	Chart 7
Building Research	Chart 7
Structural Plan Check Counter Division	
Metro Plan Check	Chart 8
South LA District Office	Chart 8
Van Nuys District Office	Chart 8
West LA District Office	Chart 8
San Pedro District Office	Chart 8
Concierge Services	Chart 8
Green/Electrical/Mechanical (GEM) Plan Check Division	
Green Building Plan Check / Inspection	Chart 9
Mechanical Plan Check and Test Lab	Chart 9
Electrical Plan Check and Test Lab	Chart 9

INSPECTION BUREAU

Commercial Building Inspection	Chart 10
Elevator and Pressure Vessel	Chart 10
Commercial Inspection	Chart 11
Plumbing, Heating and Fire Sprinkler / Electrical	
Residential Inspection	Chart 12
Metro / Van Nuys / West LA / San Pedro	
Grading Engineering and Inspection	Chart 12
Training and Emergency Management Division	Chart 12

CODE ENFORCEMENT BUREAU

Citywide Signs Code Enforcement	Chart 13
General Enforcement and Annual Inspection Monitoring	Chart 13
Citywide Pro-Active Code Enforcement	Chart 13
Citywide Vacant Building Abatement and Foreclosure Registry Program	Chart 13
Environmental Affairs Division, Local Enforcement Agency	Chart 14

RESOURCE MANAGEMENT BUREAU

Administrative Services Division	Chart 15
Financial Services Division	Chart 15
Risk and Records Management Division	Chart 15

TECHNOLOGY SERVICES BUREAU

Project Management Division	Chart 16
Application Services Division	Chart 16
Operations and Infrastructure Division	Chart 16
BuildLA Office	Chart 16

DEPARTMENT OF BUILDING AND SAFETY

Chart 1

FRANK M. BUSH
GENERAL MANAGER
(213) 482-6800
frank.bush@lacity.org

**GOVERNMENT & COMMUNITY
RELATIONS / CODE STUDIES**
CATHERINE NUEZCA-GABA, Director
(213) 482-6800
catherine.nuezcagaba@lacity.org
(See Charts 2 & 3)

EXECUTIVE OFFICER
OSAMA YOUNAN
(213) 482-6800
osama.younan@lacity.org

PERSONNEL SERVICES
GINA TERVALON
Personnel Director II
(213) 482-6720
gina.tervalon@lacity.org
(See Chart 4)

PERMIT AND ENGINEERING BUREAU
IFA KASHEFI, Chief
(213) 482-0440
ifa.kashefi@lacity.org
(See Charts 5, 6, 7, 8 & 9)

RESOURCE MANAGEMENT BUREAU
STEVE ONGELE, Chief
(213) 482-6703
steve.ongele@lacity.org
(See Chart 15)

INSPECTION BUREAU
PASCAL CHALLITA, Chief
(213) 482-6712
pascal.challita@lacity.org
(See Charts 10, 11 & 12)

CODE ENFORCEMENT BUREAU
JOHN BIEZINS, Chief
(213) 252-3902
john.biezins@lacity.org
(See Charts 13 & 14)

TECHNOLOGY SERVICES BUREAU
JENNIFER BANOS, Chief
(213) 482-0001
jennifer.banos@lacity.org
(See Chart 16)

**GOVERNMENT & COMMUNITY
RELATIONS / CODE STUDIES**
CATHERINE NUEZCA-GABA, Director
Asst Dep Sup of Bldg II
(213) 482-6805
catherine.nuezcagaba@lacity.org

**SPECIAL ASSISTANCE TO
EXECUTIVE OFFICE**
ALDO UBAU
Bldg Civil Engr I
(213) 482-6520
aldo.ubau@lacity.org

CODE ENGINEER
EUGENE BARBEAU
Struc Engr Assc III
(213) 482-0409
eugene.barbeau@lacity.org

ZONING ENGINEER
PETER KIM
Sr Struc Engineer
(213) 482-6855
peter.kim@lacity.org

**DEVELOPMENT SERVICES
CASE MANAGEMENT**
CHARMIE HUYNH
Bldg Civil Engr II
(213) 482-6875
charmie.huynh@lacity.org

**BOARD OF BUILDING &
SAFETY COMMISSIONERS**
CORA JOHNSON
Board Secretary
Bldg Civil Engr I
(213) 482-0472
cora.johnson@lacity.org

BUILD LA
KAREN PENERA
Project Manager
(213) 482-6749
karen.penera@lacity.org

RICHARD SUPAN
Struc Engr Assc II
(213) 482-0096
ricardo.supan@lacity.org

**ZONING LETTERS &
OTHERS**
ERIC WONG
Struc Engr Assc II
(213) 482-6876
eric.wong@lacity.org

SUB-DIVISION
LAURA DUONG
Struc Engr Assc IV
(213) 482-0434
laura.duong@lacity.org

DINA ELKINAWY
Struc Engr Assc II
(213) 482-9586
dina.elkinawy@lacity.org

**GOVERNMENT & COMMUNITY
RELATIONS / CODE STUDIES**
CATHERINE NUEZCA-GABA, Director
 Asst Dep Sup of Bldg II
 (213) 482-6805
 catherine.nuezcagaba@lacity.org

**DEVELOPMENT SERVICES
CASE MANAGEMENT**
CHARMIE HUYNH
 Bldg Civil Engr II
 (213) 482-6875
 charmie.huynh@lacity.org

CASE MANAGEMENT
CHAD DOI
 Build Civil Engr I
 (213) 482-6877
 chad.doi@lacity.org

CLERICAL SUPPORT
SARAH PULIDO
 Administrative Clerk
 (213) 482-6864
 sarah.pulido@lacity.org

LAX
LILY TENG
 Build Civil Engr I
 (213) 473-2146
 lily.teng@lacity.org

CASE MANAGEMENT
JOHN FRANCIA
 Struc Engr Assc IV
 (213) 482-0010
 john.francia@lacity.org

**PRELIMINARY REVIEW
METRO**
GARO TELMI, Struc Engr Assc IV
 (213) 482-0416 – garo.telmi@lacity.org
**SALVADOR QUINTINILLA (RESTAURANT
PRELIM)**, Struc Engr Assc II
 (213) 482-0471 – salvador.quintinilla@lacity.org
VAN NUYS/WEST LA
RUDOLF K. MELIKOF, Struc Engr Assc III
 (818) 374-4332 – rudolf.kinar-melikoff@lacity.org

Permit and Engineering Coordinators***
EDUARDO RODRIGUEZ, Struc Eng Assc IV
 (213) 473-2147 – eduardo.rodriguez@lacity.org
MARK WANG, Mech Eng Assc IV
 (213) 473-2144 – mark.wang@lacity.org
MEHDI ZANDI, Elec Eng Assc IV
 (213) 473-2145 – mehdi.zandi@lacity.org

CASE MANAGERS
LAWRENCE QUIRANTE, Struc Engr Assc III
 (213) 482-0444 – lawrence.quirante@lacity.org
RODOLFO ARIAS, Struc Engr Assc III
 (213) 482-6865 – roddfo.arias@lacity.org
ALBERT SERVIN, Struc Engr Assc II
 (213) 482-7339 – albert.servin@lacity.org
JOE VO, Struc Engr Assc II
 (213) 482-6870 – joed.vo@lacity.org

NON-LADBS CASE MANAGERS*

Inspection Coordinators**
TIM GRIFFITH, Sr Build Inspector
 (213) 473-2153 – tim.griffith@lacity.org
LISA YANCEY, Sr Build Inspector
 (213) 202-9846 – lisa.yancey@lacity.org
ERIC BANE, Sr Electrical Inspector
 (213) 473-2150 – eric.bane@lacity.org
KEVIN KIDD, Sr HVAC Inspector
 (213) 473-2142 – kevin.kidd@lacity.org
DEXTER JACKSON, Sr Plumbing Inspector
 (213) 473-2151 – dexter.jackson@lacity.org
KARIN IZUMI, Sr Sprinkler Inspector
 (213) 473-2143 – karin.izumi@lacity.org

DCP CASE MANAGERS
SARAH MOLINA-PEARSON, Sr City Planner
 (213) 482-0376 – sarah.molina-pearson@lacity.org
KIT AWAKUNI, City Planner
 (213) 482-0441 – kit.awakuni@lacity.org
SUSAN ZERMENO, City Planner
 (213) 482-7073 – susan.zermeno@lacity.org
JUSTON BILOW, City Planning Assc
 (213) 482-7083 – justin.bilow@lacity.org
BRIAN CARR, City Planning Assistant
 brian.r.carr@lacity.org

LAFD CASE MANAGERS METRO
DOMINIQUE MEDINA, Fire Prot Engr Assc II
 (213) 482-6930 – dominique.medina@lacity.org
ANDREW KO, Fire Prot Engr Assc IV
 (213) 482-6907 – andrew.ko@lacity.org
LAFD CASE MANAGER VAN NUYS
OSCAR SALGADO, Fire Prot Engr Assc I
 (818) 374-4352 – oscar.salgado.jr@lacity.org

DOT CASE MANAGER
TAIMOUR TANAVOLI, Trans Engr Assc III
 (213) 482-7024 - taimour.tanavoli@lacity.org

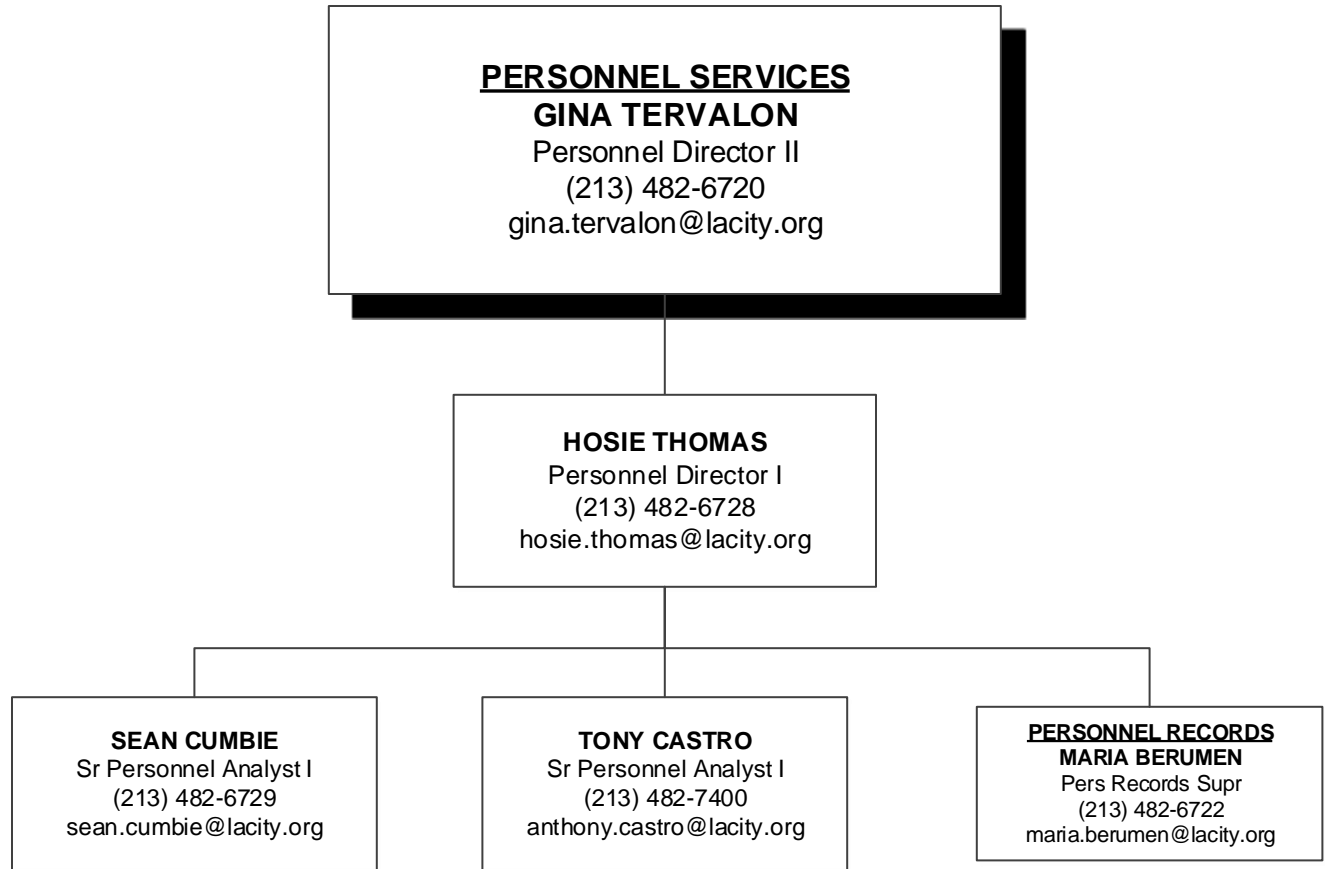
BOE CASE MANAGER
CARL MILLS, Civil Engineer
 (213) 482-6701 - carl.mills@lacity.org

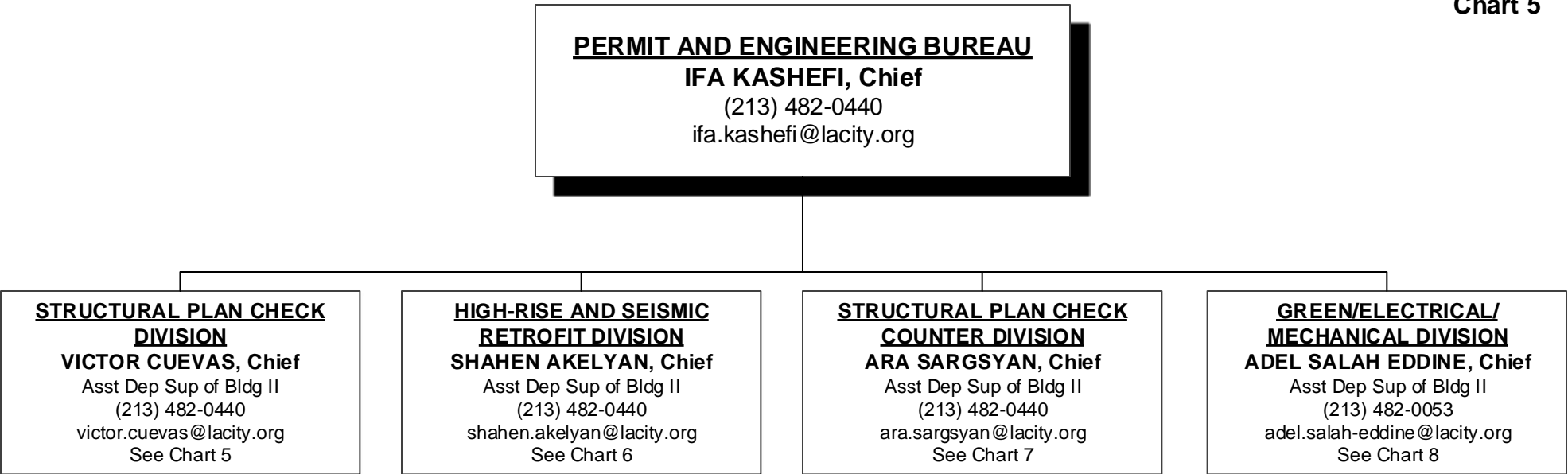
DWP CASE MANAGER
SHIRIN FRIEDLANDER, Elect Engineer
 (213) 367-2942 - shirin.friedlander@ladwp.org

* Non-LADBS employees assigned to Development Services Case Management but report to their respective department management.

**Reporting to Inspection Bureau

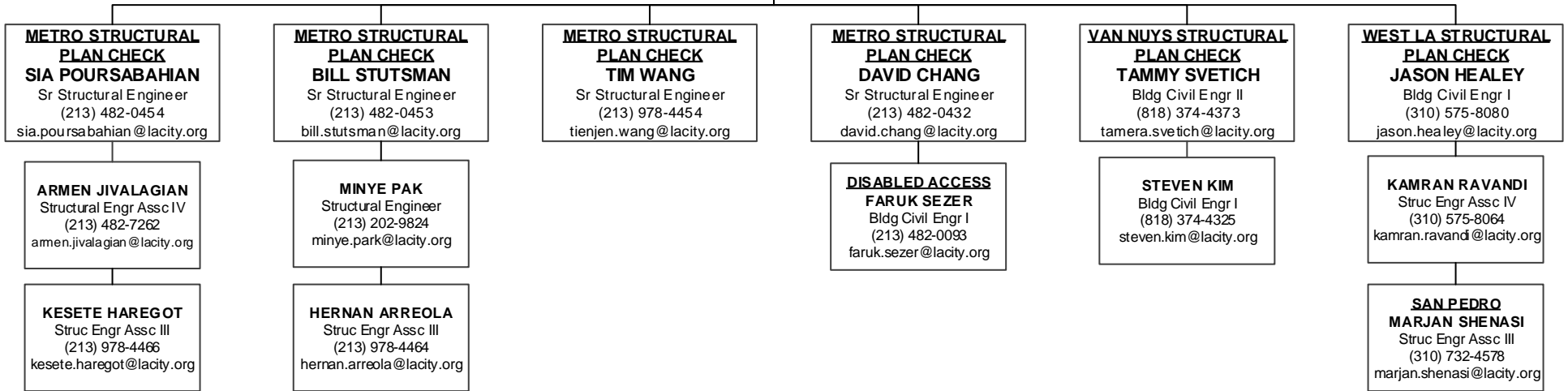
***Reporting to Permit and Engineering Bureau

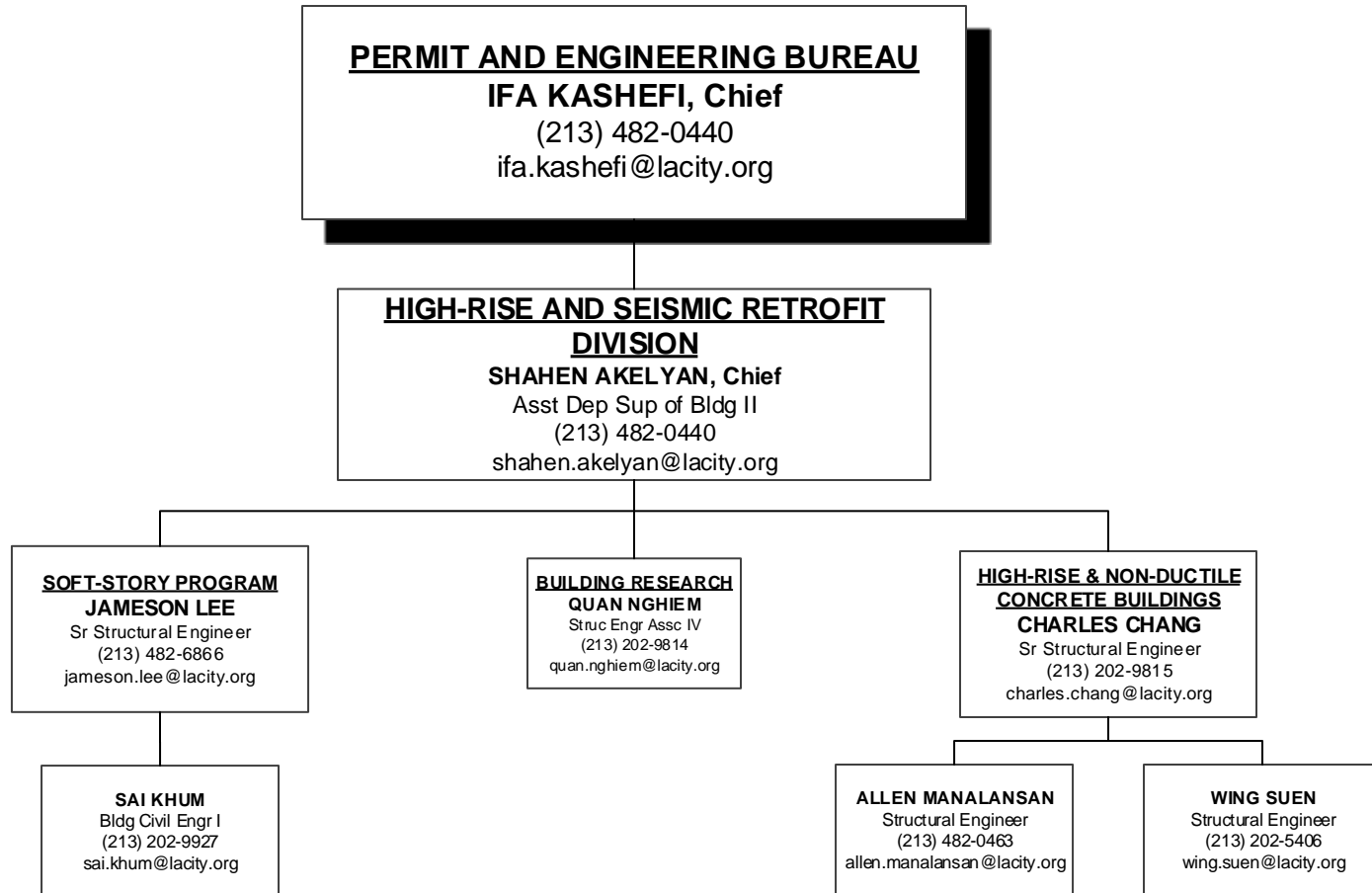




PERMIT AND ENGINEERING BUREAU
IFA KASHEFI, Chief
 (213) 482-0440
 ifa.kashefi@lacity.org

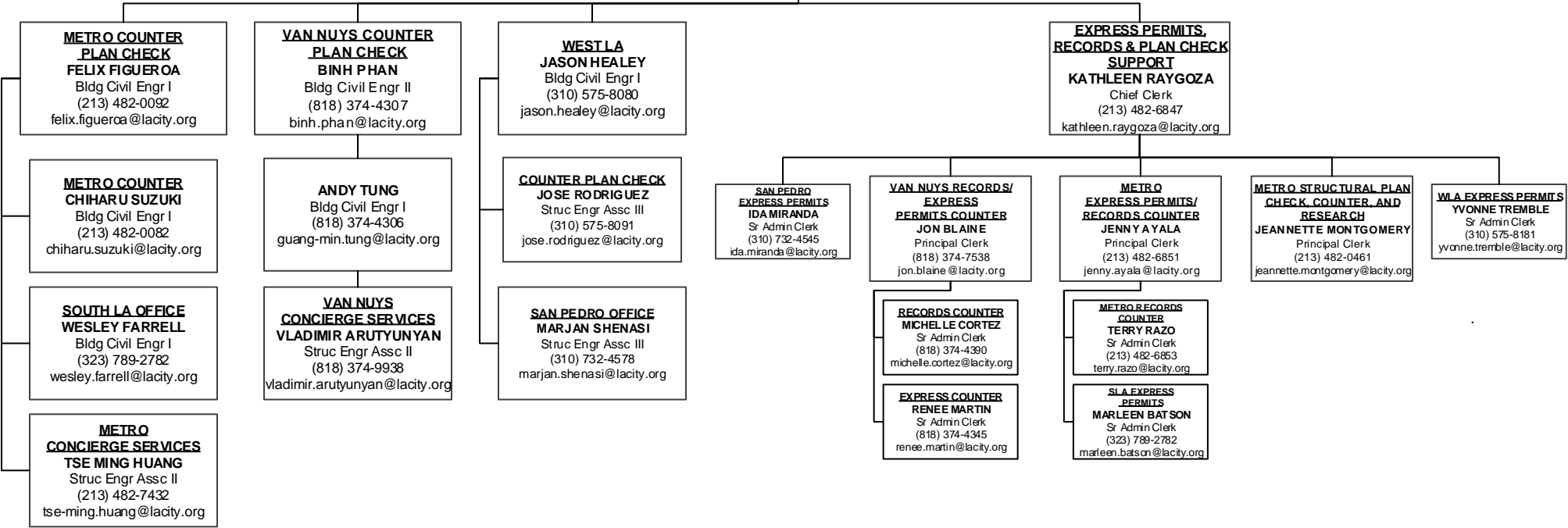
STRUCTURAL PLAN CHECK DIVISION
VICTOR CUEVAS, Chief
 Asst Dep Sup of Bldg II
 (213) 482-0440
 victor.cuevas@lacity.org





PERMIT AND ENGINEERING BUREAU
IFA KASHEFI, Chief
 (213) 482-0440
 ifa.kashefi@lacity.org

STRUCTURAL PLAN CHECK COUNTER DIVISION
ARA SARGSYAN, Chief
 Asst Dep Sup of Bldg II
 (213) 482-0440
 ara.sargsyan@lacity.org



PERMIT AND ENGINEERING BUREAU
IFA KASHEFI, Chief
 (213) 482-0440
 ifa.kashefi@lacity.org

GREEN, ELECTRICAL & MECHANICAL DIVISION
ADEL SALAH EDDINE
 Asst Dep Sup of Bldg II
 (213) 482-0053
 adel.salah-eddine@lacity.org

GREEN BUILDING
SYED ALI
 Bldg Civil Engr II
 (213) 202-3450
 syed.ali@lacity.org

MECHANICAL PLAN CHECK
DOMENICO BARBATO
 Bldg Mech Engr II
 (213) 482-0410
 domenico.barbato@lacity.org

ELECTRICAL PLAN CHECK
VACANT
 Bldg Elec Engr II
 (213) 482-7309
 @lacity.org

METRO ELECTRICAL PC Cntr/Testlab/EBEWE/LAX
NABIL MAALOUF
 Bldg Elec Engr II
 (213) 482-0052
 nabil.maalouf@lacity.org

GREEN BLDG PLAN CHECK
SEAN DANG
 Bldg Civil Engr I
 (213) 202-3427
 sean.dang@lacity.org

METRO MECHANICAL PLAN CHECK
MIKE SHAHRESTANI
 Mech Engr Assc IV
 (213) 482-6940
 mke.shahrestani@lacity.org

VAN NUYS MECHANICAL PLAN CHECK & COUNTER
GREG ARBUCKLE
 Mech Engr Assc III
 (818) 374-4372
 gregory.arbuckle@lacity.org

VAN NUYS ELECTRICAL PLAN CHECK & COUNTER
ELIE MAALOUF
 Bldg Elec Engr I
 (818) 374-4343
 elie.maalouf@lacity.org

ELECTRICAL TEST LAB
BEHROOZ HOORIANI
 Elec Engr Assc IV
 (213) 482-0045
 behrooz.hooriani@lacity.org

VAN NUYS
MICHAEL SCOTT AYERS
 Struc Engr Assc IV
 (818) 374-4308
 michael.scott.ayers@lacity.org

METRO & WLA PLAN CHECK
DONALD CRICHLow
 Sr Bldg Mech Insp
 (213) 202-3410
 donald.crichlow@lacity.org

METRO MECHANICAL PLAN CHECK COUNTER
MANUEL HERNANDEZ
 Mech Engr Assc III
 (213) 202-2791
 manuel.hernandez@lacity.org

METRO ELECTRICAL PLAN CHECK
FRANCIS YSAGUIRRE
 Elec Engr Assc IV
 (213) 482-0064
 francis.ysaguirre@lacity.org

METRO ELECTRICAL PLAN CHECK COUNTER
FRANCIS YSAGUIRRE
 Elec Engr Assc IV
 (213) 482-0064
 francis.ysaguirre@lacity.org

WEST LA
RICHARD GARCIA
 Struc Engr Assc II
 (310) 575-8095
 richard.garcia@lacity.org

METRO PLAN CHECK
NEGAR NEJAD
 Struc Engr Assc II
 (213) 482-0436
 negar.nejad@lacity.org

METRO MECHANICAL PLAN CHECK (LAX)
MARK WANG
 Mech Engr Assc III
 (213) 482-0439
 mark.wang@lacity.org

MECHANICAL TEST LAB
IRENE POOL TAMAYO
 Mech Engr Assc III
 (213) 482-0065
 irene.pool.tamayo@lacity.org

METRO ELECTRICAL PLAN CHECK (LAX)
MEHDI ZANDI
 Elec Engr Assc IV
 (213) 482-7114
 mehdi.zandi@lacity.org

VN PLAN CHECK
DAVE MATSON
 Sr Bldg Mech Insp
 (818) 374-9989
 dave.matson@lacity.org

METRO MECHANICAL PLAN CHECK
RAWAND ARYAN
 Mech Engr Assc III
 (213) 482-0406
 rawand.aryan@lacity.org

INSPECTION BUREAU
PASCAL CHALLITA, Chief
 (213) 482-6712
 pascal.challita@lacity.org
JOHN WEIGHT, Assistant Chief
 (213) 482-0342
 john.weight@lacity.org

BUILDING INSPECTION/INSPECTION CASE MANAGEMENT (ICM)/ RESTAURANT & SMALL BUSINESS EXPRESS PROGRAM (RSBEP)
JAMES GARRISON
 Chief Inspector
 (213) 482-0492
 jim.garrison@lacity.org

ELEVATOR/PRESSURE VESSEL INSPECTION
KIM ARTER
 Chief Inspector
 (213) 202-3467
 kim.arter@lacity.org

MATERIALS CONTROL
LISA YANCEY
 Principal Inspector
 (213) 482-7097
 lisa.yancey@lacity.org

METRO
RICKEY JACKSON
 Principal Inspector
 (213) 202-9863
 rickey.jackson@lacity.org

ELEVATOR INSPECTION
LARRY ISIDRO
 Principal Inspector
 (213) 202-9830
 larry.isidro@lacity.org

SPECIAL EVENTS/TENT INSPECTIONS
DOUG DEVINE
 Sr Build Inspector
 (213) 482-9585
 doug.devine@lacity.org

VAN NUYS
ANDREW CROMER
 Principal Inspector
 (818) 374-1104
 andrew.cromer@lacity.org

ELEVATOR INSPECTION METRO
DAVID JENNINGS
 Sr Safety Eng Elev
 (213) 202-9832
 david.jennings@lacity.org

PRESSURE VESSEL INSPECTION CODE DESK METRO
CIRILO REYES
 Sr Safety Eng Press Ves
 (213) 202-9852
 cirilo.reyes@lacity.org

METRO/VN/WLA/SP INVESTIGATIONS
RICK RODRIGUEZ
 Sr Build Inspector
 (213) 482-0345
 rick.rodriguez@lacity.org

WEST LA
HENRY BAGHDASSARIAN
 Principal Inspector
 (310) 914-3905
 henry.baghdassarian@lacity.org

ELEVATOR INSPECTION VN
FREDERICK LU
 Sr Safety Eng Elev
 (818) 374-1139
 frederick.lu@lacity.org

PRESSURE VESSEL INSPECTION CODE DESK VN
ROBERT YOON
 Sr Safety Eng Press Ves
 (818) 374-1149
 robert.yoon@lacity.org

CERTIFIED LICENSED CONTRACTOR (CLC)
DOUG DEVINE
 Sr Building Inspector
 (213) 202-5416
 doug.devine@lacity.org

SAN PEDRO
NICK LAROCCA
 Sr Build Inspector
 (310) 732-4552
 nick.larocca@lacity.org

ELEVATOR INSPECTION WLA
RICHARD OKE
 Sr Safety Eng Elev
 (310) 914-3967
 richard.oke@lacity.org

PRESSURE VESSEL INSPECTION CODE DESK WLA
RENATO FABIAN
 Sr Safety Eng Press Ves
 (310) 914-3973
 renato.fabian@lacity.org

HIGH RISE RETROFIT/ EQ INSPECTION
RICK RODRIGUEZ
 Sr Build Inspector
 (213) 482-0345
 rick.rodriguez@lacity.org

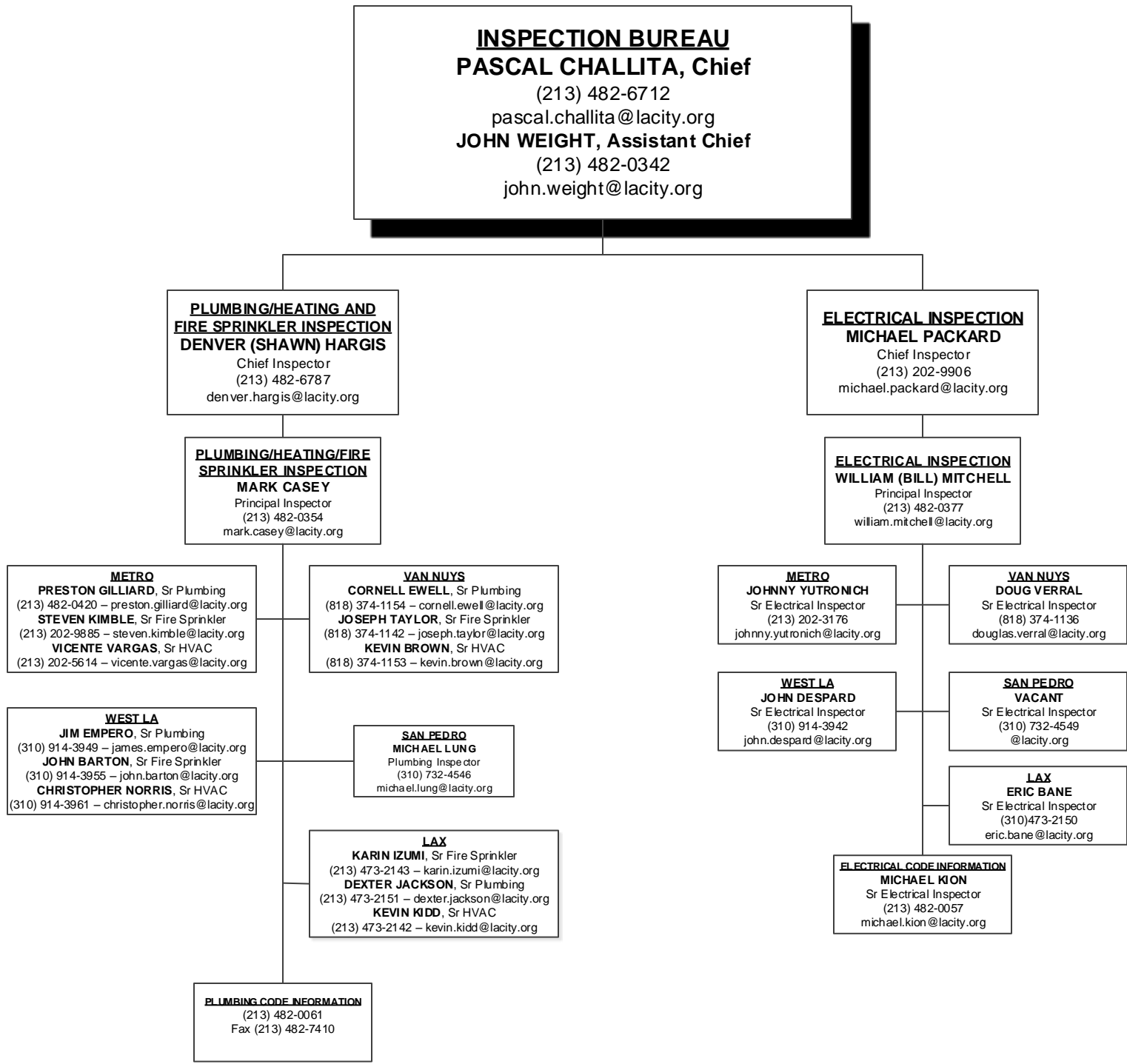
LAX
TIM GRIFFITH
 Sr Build Inspector
 (213) 473-2153
 tim.griffith@lacity.org

ELEVATOR CODE INFORMATION & APPOINTMENTS
 (213) 202-9844
 Fax (213) 202-9922

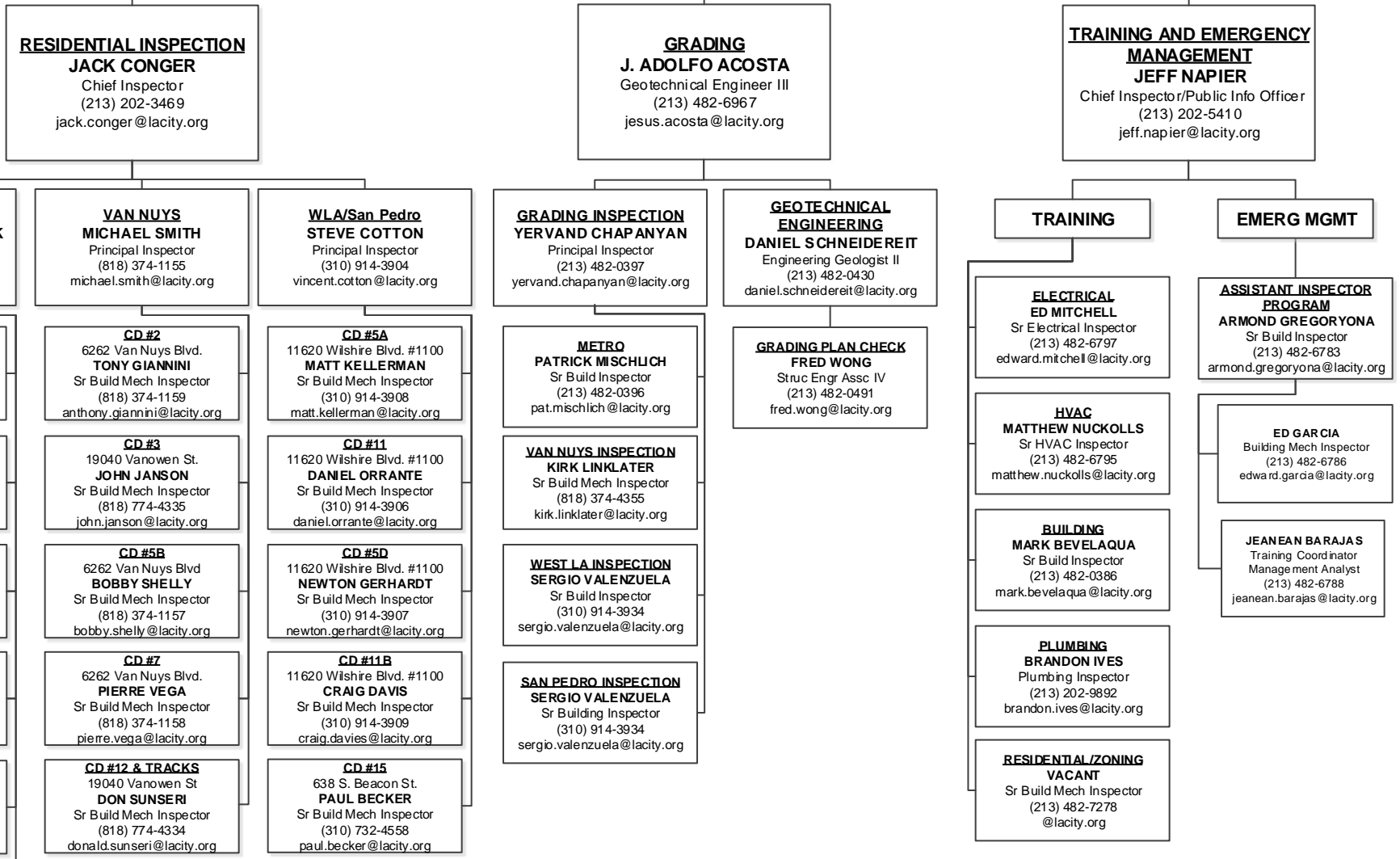
SOFT STORY INSPECTION
DAVID TSAU
 Sr Build Inspector
 (213) 482-0309
 david.tsau@lacity.org

RSBEP/ICM ADMIN SUPPORT
TATIA WADE
 Administrative Clerk
 (213) 482-0464
 tatia.wade@lacity.org

TRADE LICENSING SECTION
JACKIE GOMEZ
 Principal Clerk
 (213) 482-0330
 jackie.gomez@lacity.org



INSPECTION BUREAU
PASCAL CHALLITA, Chief
 (213) 482-6712
 pascal.challita@lacity.org
ERIC JAKEMAN, Assistant Chief
 (213) 202-9869
 eric.jakeman@lacity.org



CODE ENFORCEMENT BUREAU

JOHN BIEZINS, Chief

(213) 252-3902

john.biezins@lacity.org

FRANK LARA, Assistant Chief

(213) 252-3310

frank.lara@lacity.org

FAITH MAULUPE
Principal Clerk
(213) 252-3376
faith.maulupe@lacity.org

GENERAL ENFORCEMENT & SPECIALTY/SIGNS INSPECTION

JOHN WHIPPLE

Chief Inspector
(213) 252-3040

john.whipple@lacity.org

GENERAL ENFORCEMENT, ANNUAL INSPECTION MONITORING, PROACTIVE CODE ENFORCEMENT, & VACANT BUILDING ABATEMENT

ANDREW LONGORIA

Chief Inspector
(213) 252-3931

andrew.longoria@lacity.org

CITYWIDE SIGNS
RUSSELL KELLY
Principal Inspector
(213) 252-3977
russell.kelly@lacity.org

CENTRAL REGION GENERAL ENFORCEMENT
BRIAN HAUFF
Principal Inspector
(213) 252-3926
derdd.hauff@lacity.org

SOUTH REGION GENERAL ENFORCEMENT
BRUCE TODD
Principal Inspector
(213) 978-4502
bruce.todd@lacity.org

CITYWIDE ANNUAL INSPECTION MONITORING
MIKE BEVERIDGE
Principal Inspector
(818) 374-9806
michael.beveridge@lacity.org

NORTH REGION GENERAL ENFORCEMENT
MIKE BEVERIDGE
Principal Inspector
(818) 374-9806
michael.beveridge@lacity.org

CITYWIDE PACE 2 & 3
ALEXANDER MOFFAT
Principal Inspector
(213) 252-3976
alexander.moffat@lacity.org

CITYWIDE VBA & FORECLOSURE REGISTRY PROGRAM
ALEXANDER MOFFAT
Principal Inspector
(213) 252-3976
alexander.moffat@lacity.org

ENFORCEMENT
DONALD WONG
Acting Sr Build Mech Inspector
(213) 252-3087
donald.wong@lacity.org

CD #1
JEFFREY CHRISTIAN
Sr Build Mech Inspector
(213) 252-3038
jeffrey.christian@lacity.org

CD #8
HAL FULTZ
Sr Build Mech Inspector
(213) 978-4504
hal.fultz@lacity.org

NORTH REGION
JASON SUMMERS
Sr Build Inspector
(818) 374-9837
jason.summers@lacity.org

CD #2
DAVID JAMES
Sr Build Mech Inspector
(818) 374-9858
dave.james@lacity.org

PRO-ACTIVE CODE ENFORCEMENT 2
JOHN CORDON
Acting Sr Build Inspector
(213) 252-3981
john.cordon@lacity.org

VACANT BUILDING ABATEMENT
MICHAEL SCHULZINGER
Sr Build Mech Inspector
(213) 252-3962
michael.schulzinger@lacity.org

NEW CONSTRUCTION
DONALD WONG
Acting Sr Build Mech Inspector
(213) 252-3087
donald.wong@lacity.org

CD #4
JEFFREY CHRISTIAN
Sr Build Mech Inspector
(213) 252-3038
jeffrey.christian@lacity.org

CD #9
BRUCE TODD
Principal Inspector
(213) 978-4502
bruce.todd@lacity.org

METRO REGION
AUGUSTUS ALBAS
Sr Build Inspector
(213) 252-3041
augustus.albas@lacity.org

CD #3
ROBERT SUNSERI
Sr Build Mech Inspector
(818) 374-9857
robert.sunseri@lacity.org

PRO-ACTIVE CODE ENFORCEMENT 3
JOE VELASQUEZ
Sr Build Inspector
(213) 252-3349
joe.velasquez@lacity.org

OFF-SITE SIGNS PERIODIC INSPECTION PROGRAM
DONALD WONG
Acting Sr Build Mech Inspector
(213) 252-3087
donald.wong@lacity.org

CD #5
DAVID HICKMAN
Sr Build Mech Inspector
(213) 252-3049
david.hickman@lacity.org

CD #10
JOHN JAEGER
Sr Build Mech Inspector
(213) 252-3964
john.jaegers@lacity.org

CD #6
DAVID JAMES
Sr Build Mech Inspector
(818) 374-9858
dave.james@lacity.org

CD #13
DAVID HICKMAN
Sr Build Mech Inspector
(213) 252-3049
david.hickman@lacity.org

CD #11
PAUL CHOPP
Sr Build Inspector
(213) 978-4498
paul.chopp@lacity.org

CD #7
MARSHAL RUMPF
Sr Build Mech Inspector
(818) 374-9820
marshall.rumpf@lacity.org

CD #14
MARK VAN SLOOTEN
Sr Build Mech Inspector
(323) 526-9348
mark.vanslooten@lacity.org

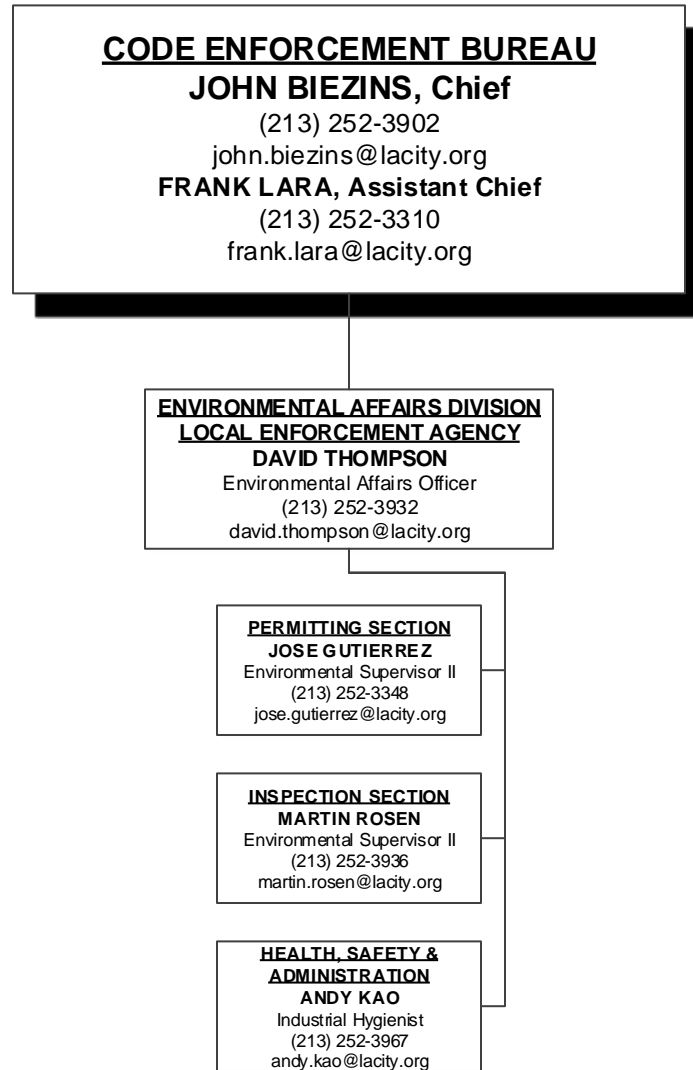
CD #15
JOHN JONES
Sr Build Inspector
(310) 732-4530
john.w.jones@lacity.org

CD #12
ROBERT SUNSERI
Sr Build Mech Inspector
(818) 374-9857
robert.sunseri@lacity.org

LEGAL LIAISON
DANIEL SANCHEZ
Sr. Fire Sprinkler Inspector
(213) 252-3393
daniel.sanchez@lacity.org

LEGAL LIAISON
SAM PORTILLO
Sr Build Mech Inspector
(213) 978-4503
sam.portillo@lacity.org

LEGAL LIAISON
MIKE BEVERIDGE
Principal Inspector
(818) 374-9806
michael.beveridge@lacity.org



RESOURCE MANAGEMENT BUREAU
STEVE ONGELE, Chief
 (213) 482-6703
 steve.ongele@lacity.org
ANA MAE YUTAN, Assistant Chief
 Chief Mgmt Analyst
 (213) 482-6782
 anamae.yutan@lacity.org

