



ORGANIZATIONAL CHART & TELEPHONE DIRECTORY

This directory is designed to:

1. Give users direct access to the Department's top-level management and supervisory personnel, and
2. To see where the managers and supervisors fit into the Department's chain-of-command structure.

FOR AUTOMATED INSPECTION REQUESTS ONLY,
YOU MAY CALL TOLL FREE FROM ANYWHERE
IN LOS ANGELES COUNTY:

1-888-LA-4-BUILD

OR

OUTSIDE LOS ANGELES COUNTY

213-482-0000

TDD Line 888-833-8389

FOR ALL OTHER SERVICES OR INFORMATION WITHIN
THE CITY OF LOS ANGELES

3-1-1

OR

OUTSIDE LOS ANGELES CITY

1-213-473-3231

For more information regarding the Los Angeles Department of Building and Safety, please visit www.ladbs.org.



LADBS ADMINISTRATIVE/HEADQUARTER OFFICES
 201 NORTH FIGUEROA STREET, SUITE 1000
 LOS ANGELES, CALIFORNIA 90012

PERMIT/DEVELOPMENT SERVICES OFFICES

- DEVELOPMENT SERVICES CASE MANAGEMENT OFFICE
 201 N. Figueroa Street, Suite 1030
 Los Angeles, CA 90012

- METRO DEVELOPMENT SERVICES CENTER
 201 N. Figueroa Street, 4th Floor Los Angeles, CA 90012
 Permit and Engineering Bureau Administration – 10th Floor
 Records Research and Express Permits – 1st Floor
 Plan Check – 4th Floor (Electrical and Mechanical)
 Electrical and Mechanical Engineering – 5th Floor
 Green Buildings – 5th Floor
 Disabled Access Appeals – 8th Floor
 Structural Engineering Research – 8th Floor
 Boards of Building and Safety Commissioners – 10th Floor
 Engineering Plan Check – 10th Floor

- VAN NUYS DEVELOPMENT SERVICES CENTER
 6262 Van Nuys Boulevard, 2nd Floor, Room 251
 Van Nuys, CA 91401

- WEST LOS ANGELES DEVELOPMENT SERVICES CENTER
 1828 Sawtelle Boulevard, 2nd Floor
 Los Angeles, CA 90025

- SAN PEDRO DEVELOPMENT SERVICES CENTER
 638 S. Beacon Street, 2nd Floor, San Pedro, CA 90731

- SOUTH LOS ANGELES DEVELOPMENT SERVICES CENTER
 8475 S. Vermont Avenue, 2nd Floor
 Los Angeles, CA 90044

- TEST LAB
 Electrical Testing Lab
 201 N. Figueroa Street, Suite 500, Los Angeles, CA 90012

- Mechanical Testing Lab
 201 N. Figueroa Street, Suite 500, Los Angeles, CA 90012

INSPECTION OFFICES

- INSPECTION BUREAU
 221 N. Figueroa Street, 7th, 8th and 12th Floors
 Los Angeles, CA 90012
 Bureau Management – 8th Floor

- Commercial Inspection, Building Insp. Division - 7th Floor
 (Electrical, HVAC, Plumbing, Fire Sprinkler & Mechanical)
 Materials Control – 7th Floor
 Special Events – 7th Floor
 Investigations/Earthquake Safety/Hi-Rise Retrofit – 7th Floor
 Certified Licensing Contractor – 7th Floor
 Trade Licensing – 7th Floor
 Residential Inspection – 8th Floor
 Elevator and Pressure Vessels – 8th Floor
 Inspection Case Management – 8th Floor
 Restaurant and Small Business Express Program (RSBEP)
 – 8th Floor
 Inspections and Investigations – 8th Floor
 Training and Emergency Management Division – 8th Floor
 Grading and Engineering Inspection – 12th Floor

- VAN NUYS INSPECTION DIVISION
 6262 Van Nuys Boulevard, Ste. 200
 Van Nuys, CA 91401

- 19040 Vanowen Street
 Reseda, CA 91335
 Residential Inspection

- WEST LOS ANGELES INSPECTION DIVISION
 11620 Wilshire Boulevard, Suite 1100
 Los Angeles, CA 90025

- SAN PEDRO COMMERCIAL & RESIDENTIAL
 INSPECTION DIVISIONS
 638 S. Beacon Street, 2nd Floor
 San Pedro, CA 90731

CODE ENFORCEMENT OFFICES

- CODE ENFORCEMENT BUREAU
 221 N. Figueroa Street, 11th and 12th Floors
 Los Angeles, CA 90012

- CENTRAL REGION
 Centralized Specialty Division – 11th Floor
 Administration and Liens – 11th Floor
 Pro Active Code Enforcement – 11th Floor
 Vacant Building Abatement – 11th Floor
 Signs-Enforcement & New – 11th Floor
 Off-Site Signs Program – 11th Floor
 General Code Enforcement – 11th Floor
 Annual Inspection Monitoring – 11th Floor
 Local Enforcement Agency – 12th Floor

- 2130 E. 1st Street – 4th Floor, Suite 2101
 Los Angeles, CA 90033

- CEIS Development Team
 201 N. Figueroa Street, 9th Floor
 Los Angeles, CA 90012

- NORTH REGION
 Van Nuys City Hall
 14410 Sylvan Street, Suite 105
 Los Angeles, CA 91401

- SOUTH REGION
 8475 S. Vermont Avenue, Suite 200
 Los Angeles, CA 90044

- 4301 S. Central Avenue
 Los Angeles, CA 90011

- 221 N Figueroa Street, 11th Floor
 Los Angeles, CA 90012

- 7166 Manchester Avenue, Suite 10A
 Los Angeles, CA 90045

- 638 Beacon Street, Suite 276
 San Pedro, CA 90731

TELEPHONE DIRECTORY INDEX

DEPARTMENT OF BUILDING AND SAFETY

| | |
|---|---------|
| Executive and Bureau Management | Chart 1 |
| Government and Community Relations Management | Chart 2 |
| Development Services Case Management | |
| Case Management | Chart 3 |
| Preliminary Review | Chart 3 |
| LAX | Chart 3 |
| Personnel Services | Chart 4 |

PERMIT AND ENGINEERING BUREAU

| | |
|---|---------|
| Permit and Engineering Bureau Management | Chart 5 |
| Structural Plan Check Division | |
| Metro Plan Check | Chart 6 |
| Van Nuys District Office | Chart 6 |
| West LA District Office | Chart 6 |
| High-Rise and Seismic Retrofit Division | |
| Soft-Story Retrofit Program | Chart 7 |
| High-Rise and Non-Ductile Concrete Buildings | Chart 7 |
| Building Research | Chart 7 |
| Structural Plan Check Counter Division | |
| Metro Plan Check | Chart 8 |
| South LA District Office | Chart 8 |
| Van Nuys District Office | Chart 8 |
| West LA District Office | Chart 8 |
| San Pedro District Office | Chart 8 |
| Concierge Services | Chart 8 |
| Green/Electrical/Mechanical (GEM) Plan Check Division | |
| Green Building Plan Check / Inspection | Chart 9 |
| Mechanical Plan Check and Test Lab | Chart 9 |
| Electrical Plan Check and Test Lab | Chart 9 |

INSPECTION BUREAU

| | |
|---|----------|
| Commercial Building Inspection | Chart 10 |
| Elevator and Pressure Vessel | Chart 10 |
| Commercial Inspection | Chart 11 |
| Plumbing, Heating and Fire Sprinkler / Electrical | |
| Residential Inspection | Chart 12 |
| Metro / Van Nuys / West LA / San Pedro | |
| Grading Engineering and Inspection | Chart 12 |
| Training and Emergency Management Division | Chart 12 |

CODE ENFORCEMENT BUREAU

| | |
|---|----------|
| Citywide Signs Code Enforcement | Chart 13 |
| General Enforcement and Annual Inspection Monitoring | Chart 13 |
| Citywide Pro-Active Code Enforcement | Chart 13 |
| Citywide Vacant Building Abatement and Foreclosure Registry Program | Chart 13 |
| Environmental Affairs Division, Local Enforcement Agency | Chart 14 |

RESOURCE MANAGEMENT BUREAU

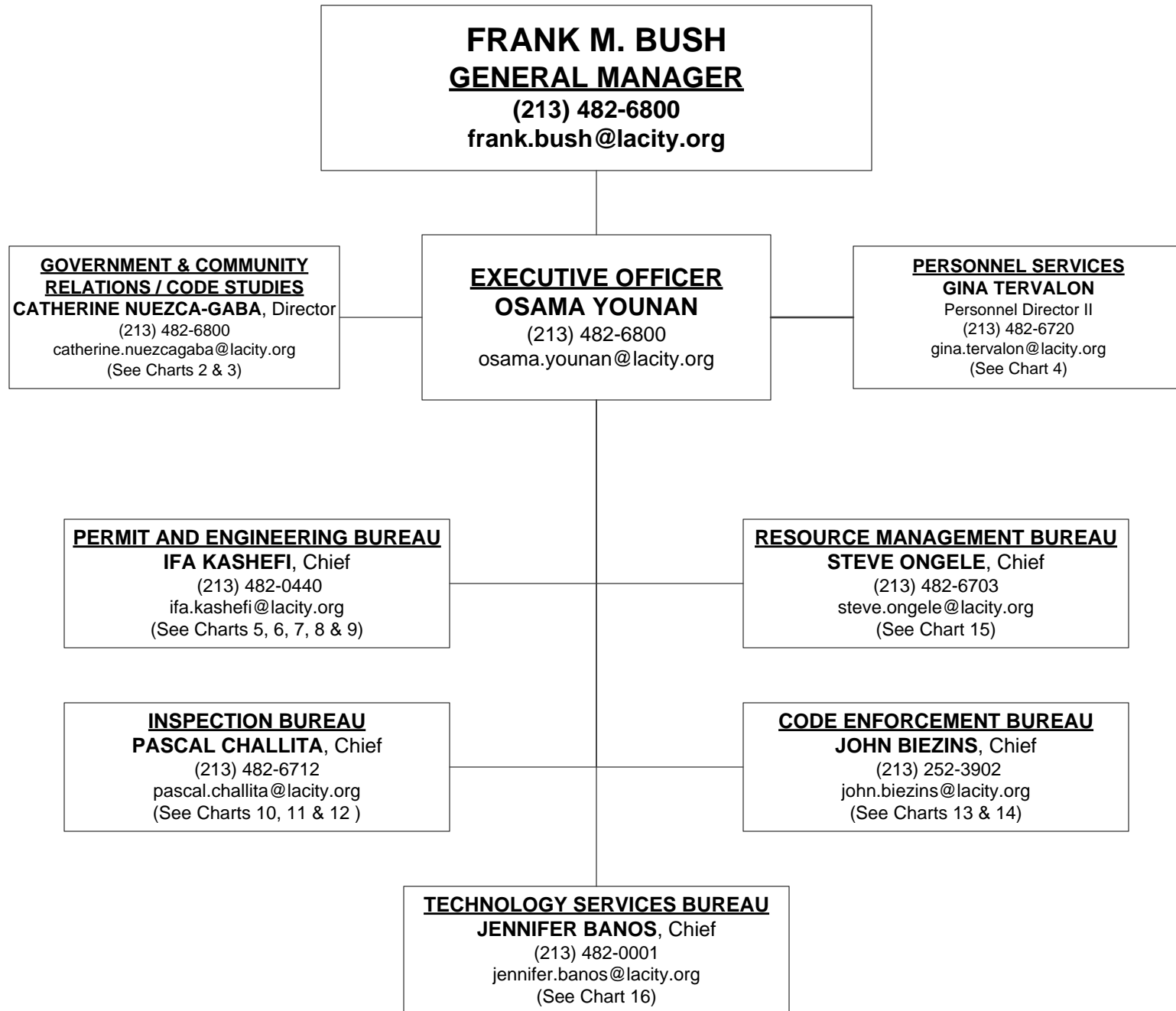
| | |
|--|----------|
| Administrative Services Division | Chart 15 |
| Financial Services Division | Chart 15 |
| Risk and Records Management Division | Chart 15 |

TECHNOLOGY SERVICES BUREAU

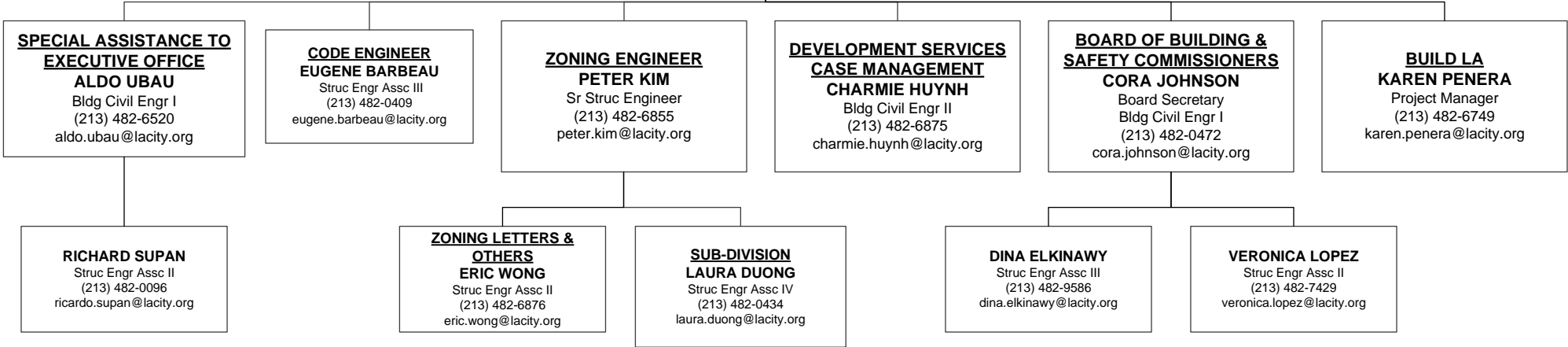
| | |
|--|----------|
| Project Management Division | Chart 16 |
| Application Services Division | Chart 16 |
| Operations and Infrastructure Division | Chart 16 |
| BuildLA Office | Chart 16 |

DEPARTMENT OF BUILDING AND SAFETY

Chart 1



**GOVERNMENT & COMMUNITY
RELATIONS / CODE STUDIES**
CATHERINE NUEZCA-GABA, Director
Asst Dep Sup of Bldg II
(213) 482-6805
catherine.nuezcagaba@lacity.org



**GOVERNMENT & COMMUNITY
RELATIONS / CODE STUDIES**
CATHERINE NUEZCA-GABA, Director
 Asst Dep Sup of Bldg II
 (213) 482-6805
 catherine.nuezcagaba@lacity.org

**DEVELOPMENT SERVICES
CASE MANAGEMENT**
CHARMIE HUYNH
 Bldg Civil Engr II
 (213) 482-6875
 charmie.huynh@lacity.org

CASE MANAGEMENT
CHAD DOI
 Build Civil Engr I
 (213) 482-6877
 chad.doi@lacity.org

CLERICAL SUPPORT
SARAH PULIDO
 Administrative Clerk
 (213) 482-6864
 sarah.pulido@lacity.org

LAX
LILY TENG
 Build Civil Engr I
 (213) 473-2146
 lily.teng@lacity.org

CASE MANAGEMENT
JOHN FRANCIA
 Struc Engr Assc IV
 (213) 482-0010
 john.francia@lacity.org

**PRELIMINARY REVIEW
METRO**
GARO TELMI, Struc Engr Assc IV
 (213) 482-0416 – garo.telmi@lacity.org
**SALVADOR QUINTINILLA (RESTAURANT
PRELIM)**, Struc Engr Assc II
 (213) 482-0471 – salvador.quintinilla@lacity.org
VAN NUYS/WEST LA
RUDOLF K. MELIKOF, Struc Engr Assc III
 (818) 374-4332 – rudolf.kinar-melikoff@lacity.org

Permit and Engineering Coordinators***
EDUARDO RODRIGUEZ, Struc Eng Assc IV
 (213) 473-2147 – eduardo.rodriguez@lacity.org
MARK WANG, Mech Eng Assc IV
 (213) 473-2144 – mark.wang@lacity.org
MEHDI ZANDI, Elec Eng Assc IV
 (213) 473-2145 – mehdi.zandi@lacity.org

CASE MANAGERS
LAWRENCE QUIRANTE, Struc Engr Assc III
 (213) 482-0444 – lawrence.quirante@lacity.org
RODOLFO ARIAS, Struc Engr Assc III
 (213) 482-6865 – rodolfo.arias@lacity.org
ALBERT SERVIN, Struc Engr Assc II
 (213) 482-7339 – albert.servin@lacity.org
JOE VO, Struc Engr Assc II
 (213) 482-6870 – joed.vo@lacity.org

NON-LADBS CASE MANAGERS*

Inspection Coordinators**
TIM GRIFFITH, Sr Build Inspector
 (213) 473-2153 – tim.griffith@lacity.org
LISA YANCEY, Sr Build Inspector
 (213) 202-9846 – lisa.yancey@lacity.org
ERIC BANE, Sr Electrical Inspector
 (213) 473-2150 – eric.bane@lacity.org
KEVIN KIDD, Sr HVAC Inspector
 (213) 473-2142 – kevin.kidd@lacity.org
DEXTER JACKSON, Sr Plumbing Inspector
 (213) 473-2151 – dexter.jackson@lacity.org
KARIN IZUMI, Sr Sprinkler Inspector
 (213) 473-2143 – karin.izumi@lacity.org

DCP CASE MANAGERS
SARAH MOLINA-PEARSON, Sr City Planner
 (213) 482-0376 – sarah.molina-pearson@lacity.org
KIT AWAKUNI, City Planner
 (213) 482-0441 – kit.awakuni@lacity.org
SUSAN ZERMENO, City Planner
 (213) 482-7073 – susan.zermeno@lacity.org
JUSTON BILOW, City Planning Assc
 (213) 482-7083 – justin.bilow@lacity.org
BRIAN CARR, City Planning Assistant
 brian.r.carr@lacity.org

LAFD CASE MANAGERS METRO
DOMINIQUE MEDINA, Fire Prot Engr Assc II
 (213) 482-6930 – dominique.medina@lacity.org
ANDREW KO, Fire Prot Engr Assc IV
 (213) 482-6907 – andrew.ko@lacity.org
LAFD CASE MANAGER VAN NUYS
OSCAR SALGADO, Fire Prot Engr Assc I
 (818) 374-4352 – oscar.salgado.jr@lacity.org

DOT CASE MANAGER
TAIMOUR TANAVOLI, Trans Engr Assc III
 (213) 482-7024 - taimour.tanavoli@lacity.org

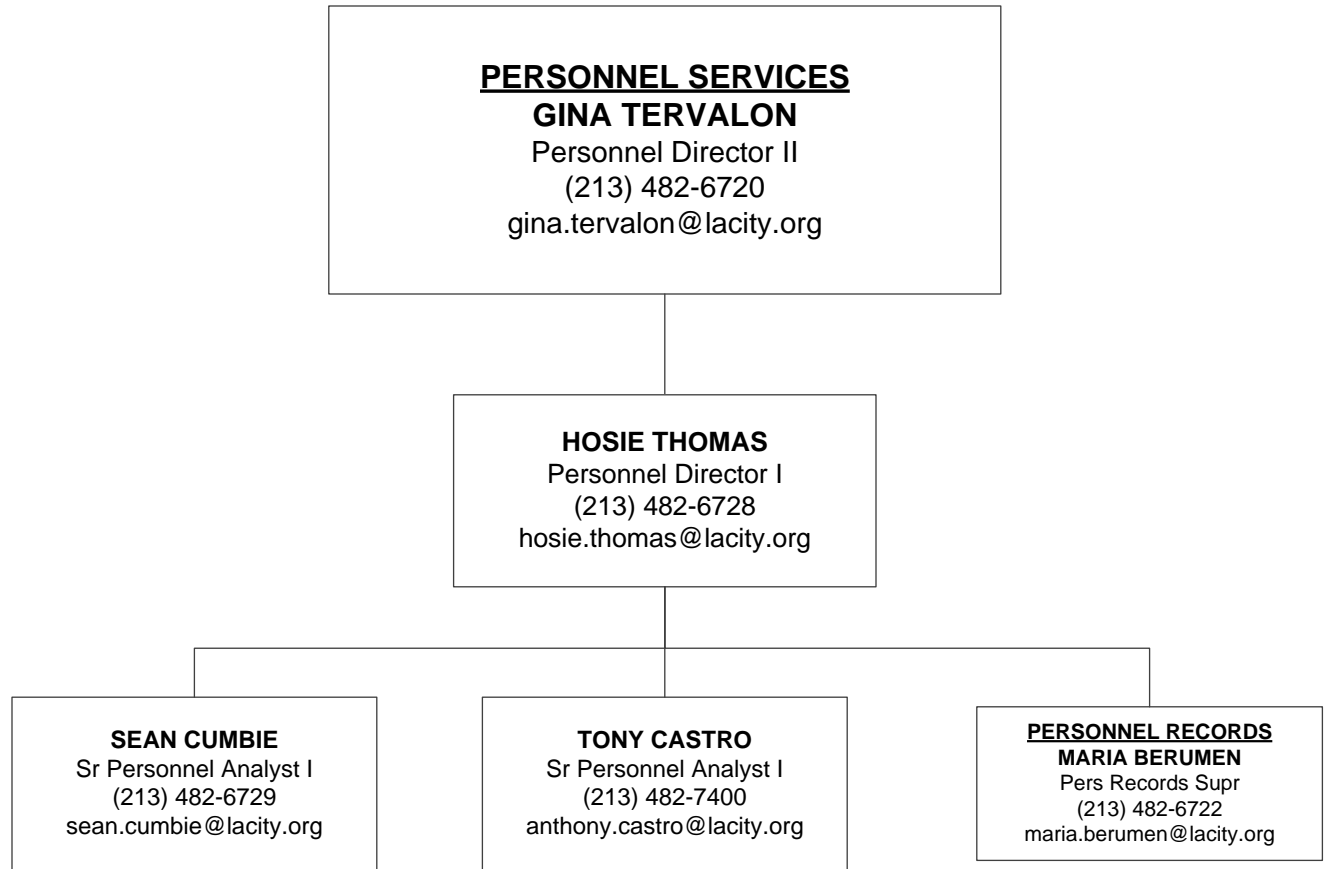
BOE CASE MANAGER
CARL MILLS, Civil Engineer
 (213) 482-6701 - carl.mills@lacity.org

DWP CASE MANAGER
SHIRIN FRIEDLANDER, Elect Engineer
 (213) 367-2942 - shirin.friedlander@ladwp.org

* Non-LADBS employees assigned to Development Services Case Management but report to their respective department management.

**Reporting to Inspection Bureau

***Reporting to Permit and Engineering Bureau



PERMIT AND ENGINEERING BUREAU
IFA KASHEFI, Chief
(213) 482-0440
ifa.kashefi@lacity.org

STRUCTURAL PLAN CHECK DIVISION
VICTOR CUEVAS, Chief
Asst Dep Sup of Bldg II
(213) 482-0440
victor.cuevas@lacity.org
See Chart 5

HIGH-RISE AND SEISMIC RETROFIT DIVISION
SHAHEN AKELYAN, Chief
Asst Dep Sup of Bldg II
(213) 482-0440
shahen.akelyan@lacity.org
See Chart 6

STRUCTURAL PLAN CHECK COUNTER DIVISION
ARA SARGSYAN, Chief
Asst Dep Sup of Bldg II
(213) 482-0440
ara.sargsyan@lacity.org
See Chart 7

GREEN/ELECTRICAL/ MECHANICAL DIVISION
ADEL SALAH EDDINE, Chief
Asst Dep Sup of Bldg II
(213) 482-0053
adel.salah-eddine@lacity.org
See Chart 8

PERMIT AND ENGINEERING BUREAU
IFA KASHEFI, Chief
(213) 482-0440
ifa.kashefi@lacity.org

STRUCTURAL PLAN CHECK DIVISION
VICTOR CUEVAS, Chief
Asst Dep Sup of Bldg II
(213) 482-0440
victor.cuevas@lacity.org

**METRO STRUCTURAL
PLAN CHECK**
SIA POURSABAHIAN
Sr Structural Engineer
(213) 482-0454
sia.poursabahian@lacity.org

**METRO STRUCTURAL
PLAN CHECK**
BILL STUTSMAN
Sr Structural Engineer
(213) 482-0453
bill.stutsman@lacity.org

**METRO STRUCTURAL
PLAN CHECK**
TIM WANG
Sr Structural Engineer
(213) 978-4454
tienjen.wang@lacity.org

**METRO STRUCTURAL
PLAN CHECK**
DAVID CHANG
Sr Structural Engineer
(213) 482-0432
david.chang@lacity.org

**VAN NUYS STRUCTURAL
PLAN CHECK**
TAMMY SVETICH
Bldg Civil Engr II
(818) 374-4373
tamera.svetich@lacity.org

**WEST LA STRUCTURAL
PLAN CHECK**
JASON HEALEY
Bldg Civil Engr I
(310) 575-8080
jason.healey@lacity.org

ARMEN JIVALAGIAN
Structural Engr Assc IV
(213) 482-7262
armen.jivalagian@lacity.org

MINYE PAK
Structural Engineer
(213) 202-9824
minye.park@lacity.org

DISABLED ACCESS
FARUK SEZER
Bldg Civil Engr I
(213) 482-0093
faruk.sezer@lacity.org

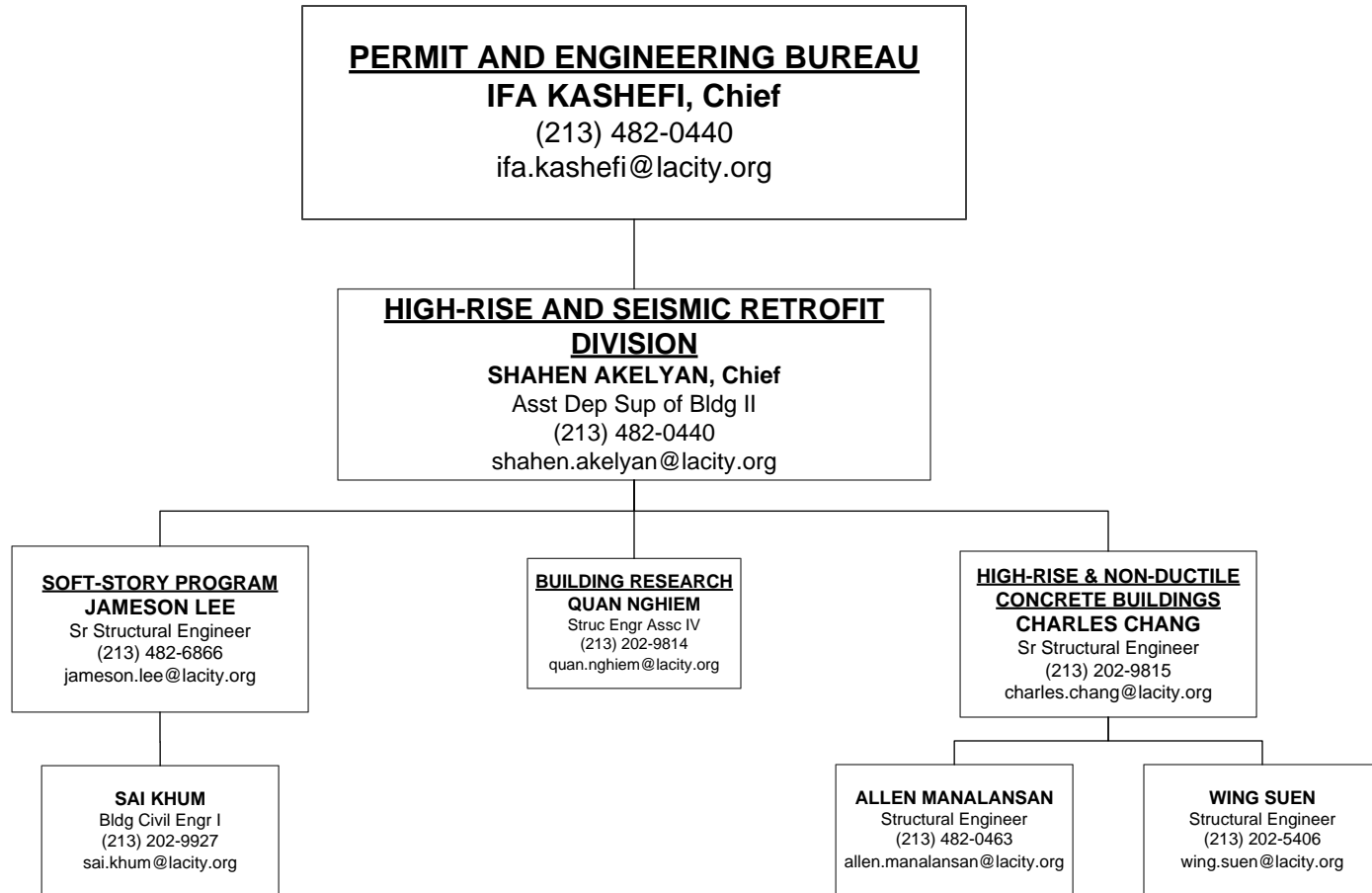
STEVEN KIM
Bldg Civil Engr I
(818) 374-4325
steven.kim@lacity.org

KAMRAN RAVANDI
Struc Engr Assc IV
(310) 575-8064
kamran.ravandi@lacity.org

KESETE HAREGOT
Struc Engr Assc III
(213) 978-4466
kesete.haregot@lacity.org

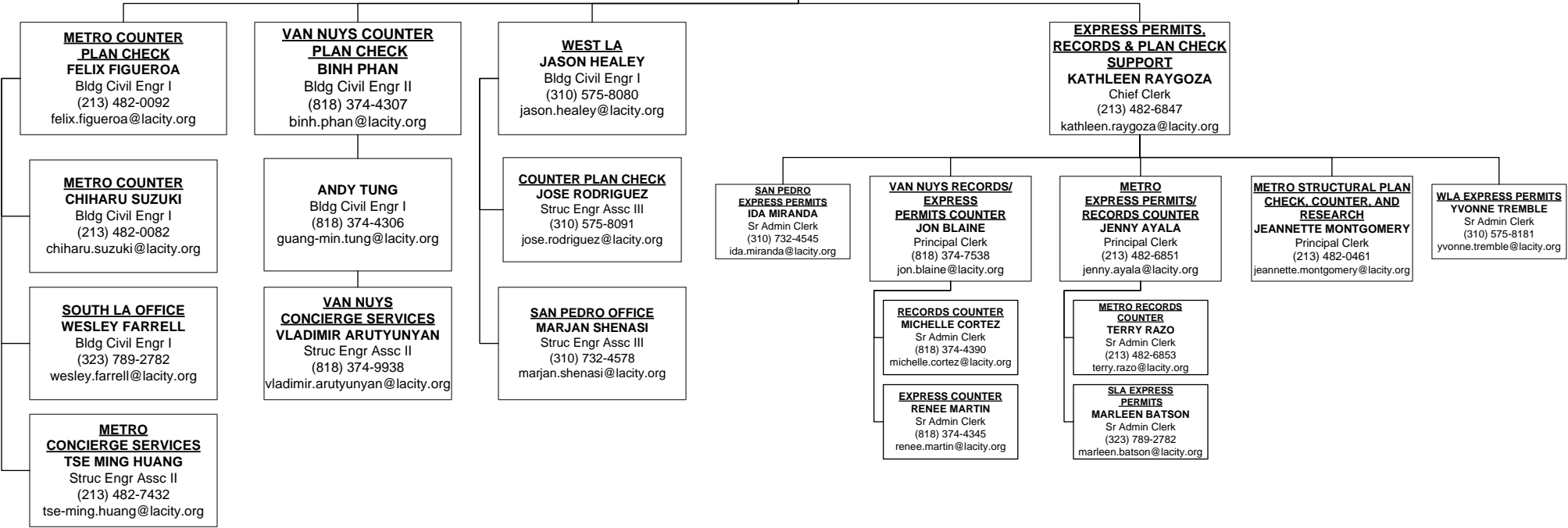
HERNAN ARREOLA
Struc Engr Assc III
(213) 978-4464
hernan.arreola@lacity.org

**SAN PEDRO
MARJAN SHENASI**
Struc Engr Assc III
(310) 732-4578
marjan.shenasi@lacity.org



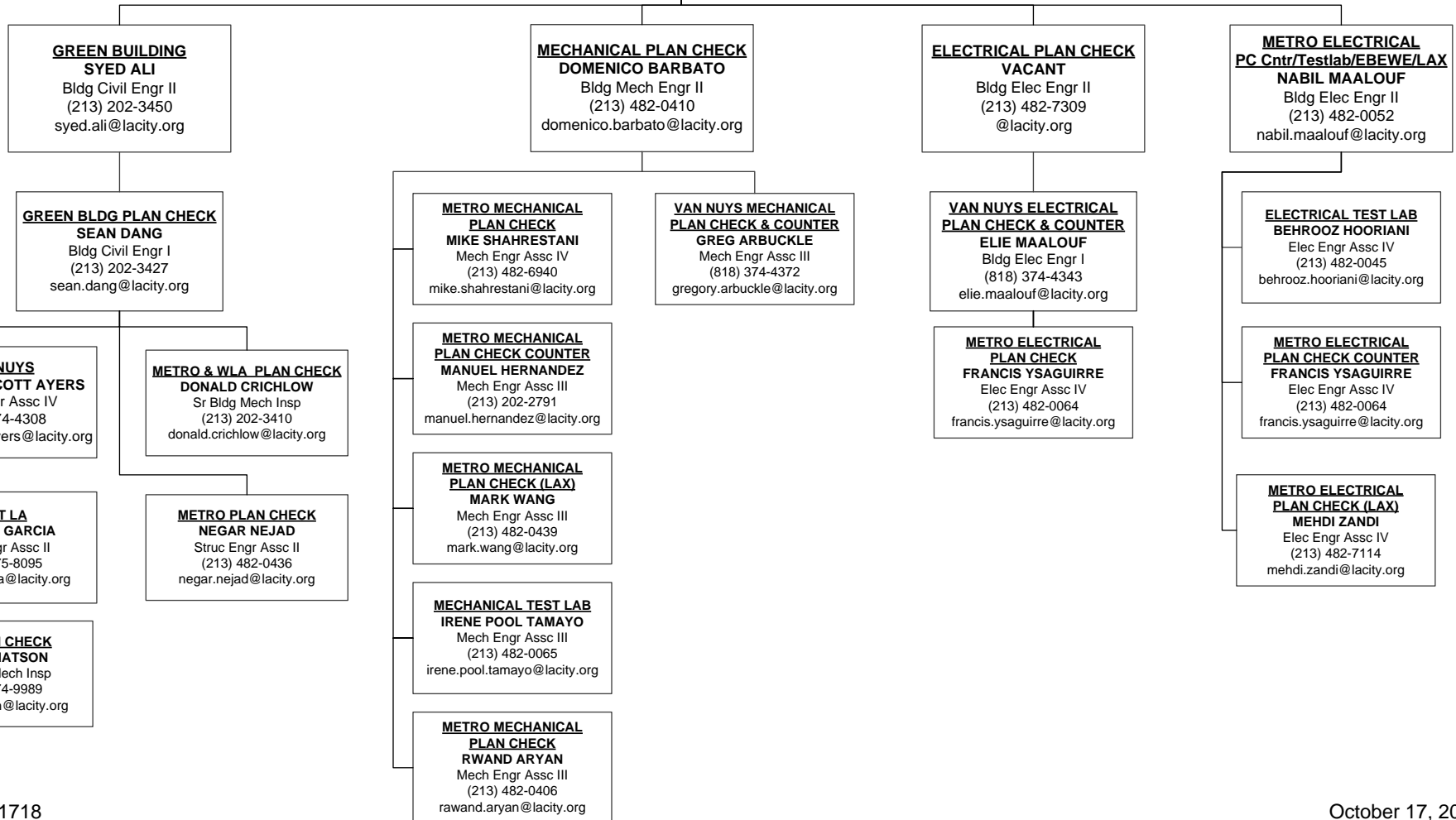
PERMIT AND ENGINEERING BUREAU
IFA KASHEFI, Chief
 (213) 482-0440
 ifa.kashefi@lacity.org

STRUCTURAL PLAN CHECK COUNTER DIVISION
ARA SARGSYAN, Chief
 Asst Dep Sup of Bldg II
 (213) 482-0440
 ara.sargsyan@lacity.org



PERMIT AND ENGINEERING BUREAU
IFA KASHEFI, Chief
 (213) 482-0440
 ifa.kashefi@lacity.org

GREEN, ELECTRICAL & MECHANICAL DIVISION
ADEL SALAH EDDINE
 Asst Dep Sup of Bldg II
 (213) 482-0053
 adel.salah-eddine@lacity.org



INSPECTION BUREAU
PASCAL CHALLITA, Chief
 (213) 482-6712
 pascal.challita@lacity.org
JOHN WEIGHT, Assistant Chief
 (213) 482-0342
 john.weight@lacity.org

BUILDING INSPECTION/INSPECTION CASE MANAGEMENT (ICM)/ RESTAURANT & SMALL BUSINESS EXPRESS PROGRAM (RSBEP)
JAMES GARRISON
 Chief Inspector
 (213) 482-0492
 jim.garrison@lacity.org

ELEVATOR/PRESSURE VESSEL INSPECTION
KIM ARTHUR
 Chief Inspector/Alternate Public Information Officer
 (213) 202-3467
 kim.arther@lacity.org

MATERIALS CONTROL
LISA YANCEY
 Principal Inspector
 (213) 482-7097
 lisa.yancey@lacity.org

METRO
RICKEY JACKSON
 Principal Inspector
 (213) 202-9863
 rickey.jackson@lacity.org

ELEVATOR INSPECTION
LARRY ISIDRO
 Principal Inspector
 (213) 202-9830
 larry.isidro@lacity.org

SPECIAL EVENTS/TENT INSPECTIONS
DOUG DEVINE
 Sr Build Inspector
 (213) 482-9585
 doug.devine@lacity.org

VAN NUYS
ANDREW CROMER
 Principal Inspector
 (818) 374-1104
 andrew.cromer@lacity.org

ELEVATOR INSPECTION METRO
DAVID JENNINGS
 Sr Safety Eng Elev
 (213) 202-9832
 david.jennings@lacity.org

PRESSURE VESSEL INSPECTION CODE DESK METRO
CIRILO REYES
 Sr Safety Eng Press Ves
 (213) 202-9852
 cirilo.reyes@lacity.org

METRO/VN/WLA/SP INVESTIGATIONS
RICK RODRIGUEZ
 Sr Build Inspector
 (213) 482-0345
 rick.rodriguez@lacity.org

WEST LA
HENRY BAGHDASSARIAN
 Principal Inspector
 (310) 914-3905
 henry.baghdassarian@lacity.org

ELEVATOR INSPECTION VN
FREDERICK LU
 Sr Safety Eng Elev
 (818) 374-1139
 frederick.lu@lacity.org

PRESSURE VESSEL INSPECTION CODE DESK VN
ROBERT YOON
 Sr Safety Eng Press Ves
 (818) 374-1149
 robert.yoon@lacity.org

CERTIFIED LICENSED CONTRACTOR (CLC)
DOUG DEVINE
 Sr Building Inspector
 (213) 202-5416
 doug.devine@lacity.org

SAN PEDRO
NICK LAROCCA
 Sr Build Inspector
 (310) 732-4552
 nick.larocca@lacity.org

ELEVATOR INSPECTION WLA
RICHARD OKE
 Sr Safety Eng Elev
 (310) 914-3967
 richard.oke@lacity.org

PRESSURE VESSEL INSPECTION CODE DESK WLA
RENATO FABIAN
 Sr Safety Eng Press Ves
 (310) 914-3973
 renato.fabian@lacity.org

HIGH RISE RETROFIT/ EQ INSPECTION
RICK RODRIGUEZ
 Sr Build Inspector
 (213) 482-0345
 rick.rodriguez@lacity.org

LAX
TIM GRIFFITH
 Sr Build Inspector
 (213) 473-2153
 tim.griffith@lacity.org

ELEVATOR CODE INFORMATION & APPOINTMENTS
 (213) 202-9844
 Fax (213) 202-9922

SOFT STORY INSPECTION
DAVID TSAU
 Sr Build Inspector
 (213) 482-0309
 david.tsau@lacity.org

RSBEP/ICM ADMIN SUPPORT
TATIA WADE
 Administrative Clerk
 (213) 482-0464
 tatia.wade@lacity.org

TRADE LICENSING SECTION
JACKIE GOMEZ
 Principal Clerk
 (213) 482-0330
 jackie.gomez@lacity.org

INSPECTION BUREAU
PASCAL CHALLITA, Chief
 (213) 482-6712
 pascal.challita@lacity.org
JOHN WEIGHT, Assistant Chief
 (213) 482-0342
 john.weight@lacity.org

**PLUMBING/HEATING AND
 FIRE SPRINKLER INSPECTION**
DENVER (SHAWN) HARGIS
 Chief Inspector
 (213) 482-6787
 denver.hargis@lacity.org

ELECTRICAL INSPECTION
MICHAEL PACKARD
 Chief Inspector
 (213) 202-9906
 michael.packard@lacity.org

**PLUMBING/HEATING/FIRE
 SPRINKLER INSPECTION**
MARK CASEY
 Principal Inspector
 (213) 482-0354
 mark.casey@lacity.org

ELECTRICAL INSPECTION
WILLIAM (BILL) MITCHELL
 Principal Inspector
 (213) 482-0377
 william.mitchell@lacity.org

METRO
PRESTON GILLIARD, Sr Plumbing
 (213) 482-0420 – preston.gilliard@lacity.org
STEVEN KIMBLE, Sr Fire Sprinkler
 (213) 202-9885 – steven.kimble@lacity.org
VICENTE VARGAS, Sr HVAC
 (213) 202-5614 – vicente.vargas@lacity.org

VAN NUYS
CORNELL EWELL, Sr Plumbing
 (818) 374-1154 – cornell.ewell@lacity.org
JOSEPH TAYLOR, Sr Fire Sprinkler
 (818) 374-1142 – joseph.taylor@lacity.org
KEVIN BROWN, Sr HVAC
 (818) 374-1153 – kevin.brown@lacity.org

METRO
JOHNNY YUTRONICH
 Sr Electrical Inspector
 (213) 202-3176
 johnny.yutronich@lacity.org

VAN NUYS
DOUG VERRAL
 Sr Electrical Inspector
 (818) 374-1136
 douglas.verral@lacity.org

WEST LA
JIM EMPERO, Sr Plumbing
 (310) 914-3949 – james.empero@lacity.org
JOHN BARTON, Sr Fire Sprinkler
 (310) 914-3955 – john.barton@lacity.org
CHRISTOPHER NORRIS, Sr HVAC
 (310) 914-3961 – christopher.norris@lacity.org

SAN PEDRO
MICHAEL LUNG
 Plumbing Inspector
 (310) 732-4546
 michael.lung@lacity.org

WEST LA
JOHN DESPARD
 Sr Electrical Inspector
 (310) 914-3942
 john.despard@lacity.org

SAN PEDRO
WON LEE
 Sr Electrical Inspector
 (310) 732-4549
 won.lee@lacity.org

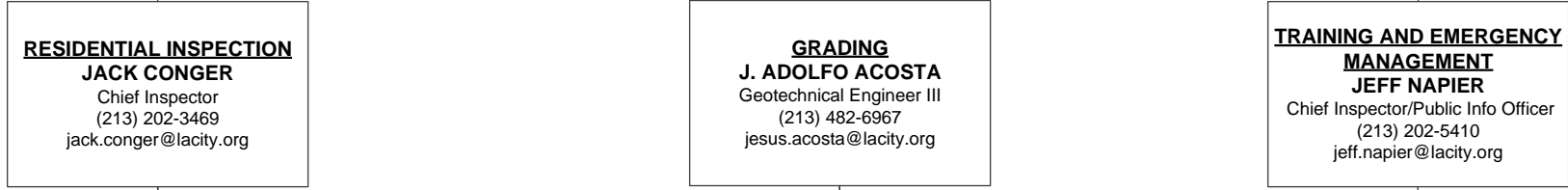
LAX
KARIN IZUMI, Sr Fire Sprinkler
 (213) 473-2143 – karin.izumi@lacity.org
DEXTER JACKSON, Sr Plumbing
 (213) 473-2151 – dexter.jackson@lacity.org
KEVIN KIDD, Sr HVAC
 (213) 473-2142 – kevin.kidd@lacity.org

LAX
ERIC BANE
 Sr Electrical Inspector
 (310)473-2150
 eric.bane@lacity.org

ELECTRICAL CODE INFORMATION
VACANT
 Sr Electrical Inspector
 (213) 482-0057
 @lacity.org

PLUMBING CODE INFORMATION
 (213) 482-0061
 Fax (213) 482-7410

INSPECTION BUREAU
PASCAL CHALLITA, Chief
 (213) 482-6712
 pascal.challita@lacity.org
ERIC JAKEMAN, Assistant Chief
 (213) 202-9869
 eric.jakeman@lacity.org



METRO
RONALD (DEVIN) MYRICK
 Principal Inspector
 (213) 482-0323
 ronald.myrick@lacity.org

VAN NUYS
MICHAEL SMITH
 Principal Inspector
 (818) 374-1155
 michael.smith@lacity.org

WLA/San Pedro
STEVE COTTON
 Principal Inspector
 (310) 914-3904
 vincent.cotton@lacity.org

GRADING INSPECTION
YERVAND CHAPANYAN
 Principal Inspector
 (213) 482-0397
 yervand.chapanyan@lacity.org

GEOTECHNICAL ENGINEERING
DANIEL SCHNEIDERREIT
 Engineering Geologist II
 (213) 482-0430
 daniel.schneiderreit@lacity.org

TRAINING

EMERG MGMT

CD #1 & #14
DOMENIC DANERI
 Sr Build Mech Inspector
 (213) 202-3418
 domenic.daneri@lacity.org
RUBEN SALAS
 Sr Build Mech Inspector
 ruben.salas@lacity.org

CD #2
 6262 Van Nuys Blvd.
TONY GIANNINI
 Sr Build Mech Inspector
 (818) 374-1159
 anthony.giannini@lacity.org

CD #5A
 11620 Wilshire Blvd. #1100
MATT KELLERMAN
 Sr Build Mech Inspector
 (310) 914-3908
 matt.kellerman@lacity.org

METRO
PATRICK MISCHLICH
 Sr Build Inspector
 (213) 482-0396
 pat.mischlich@lacity.org

GRADING PLAN CHECK
FRED WONG
 Struc Engr Assc IV
 (213) 482-0491
 fred.wong@lacity.org

ELECTRICAL
ED MITCHELL
 Sr Electrical Inspector
 (213) 482-6797
 edward.mitchell@lacity.org

ED GARCIA
 Sr Build Mech Inspector
 (213) 482-6786
 edward.garcia@lacity.org

CD #4
 221 N. Figueroa, 8th Fl.
ROBERT MINASSIANS
 Sr Build Mech Inspector
 (213) 202-3431
 robert.minassians@lacity.org

CD #3
 19040 Vanowen St.
JOHN JANSON
 Sr Build Mech Inspector
 (818) 774-4335
 john.janson@lacity.org

CD #11
 11620 Wilshire Blvd. #1100
DANIEL ORRANTE
 Sr Build Mech Inspector
 (310) 914-3906
 daniel.orrante@lacity.org

VAN NUYS INSPECTION
GAYK MANUKYAN
 Sr Build Mech Inspector
 (818) 374-4355
 gayk.manukyan@lacity.org

HVAC
MATTHEW NUCKOLLS
 Building Mech Inspector
 (213) 482-6795
 matthew.nuckolls@lacity.org

JEANEAN BARAJAS
 Training Coordinator
 Management Analyst
 (213) 482-6788
 jeanean.barajas@lacity.org

CD #5C
 221 N. Figueroa, 8th Fl.
BOB BLAND
 Sr Build Mech Inspector
 (213) 202-3445
 elmer.bland@lacity.org

CD #5B
 6262 Van Nuys Blvd
BOBBY SHELLY
 Sr Build Mech Inspector
 (818) 374-1157
 bobby.shelly@lacity.org

CD #5D
 11620 Wilshire Blvd. #1100
MICHAEL TEMPLE
 Sr Build Mech Inspector
 (310) 914-3907
 michael.temple@lacity.org

WEST LA INSPECTION
SERGIO VALENZUELA
 Sr Build Inspector
 (310) 914-3934
 sergio.valenzuela@lacity.org

BUILDING
MARK BEVELAQUA
 Sr Build Inspector
 (213) 482-0386
 mark.bevelaqua@lacity.org

CD #8 & #9
 221 N. Figueroa, 8th Fl.
BOB DUNN
 Sr Build Mech Inspector
 (213) 202-3211
 bob.dunn@lacity.org

CD #7
 6262 Van Nuys Blvd.
PIERRE VEGA
 Sr Build Mech Inspector
 (818) 374-1158
 pierre.vega@lacity.org

CD #11B
 11620 Wilshire Blvd. #1100
CRAIG DAVIS
 Sr Build Mech Inspector
 (310) 914-3909
 craig.davis@lacity.org

SAN PEDRO INSPECTION
SERGIO VALENZUELA
 Sr Building Inspector
 (310) 914-3934
 sergio.valenzuela@lacity.org

PLUMBING
BRANDON IVES
 Plumbing Inspector
 (213) 202-9892
 brandon.ives@lacity.org

CD #13
 221 N. Figueroa, 8th Fl.
CHARLES BOGHOSKHAN
 Sr Build Mech Inspector
 (213) 202-3261
 charles.boghoskhan@lacity.org

CD #12 & TRACKS
 19040 Vanowen St
DON SUNSERI
 Sr Build Mech Inspector
 (818) 774-4334
 donald.sunseri@lacity.org

CD #15
 638 S. Beacon St.
PAUL BECKER
 Sr Build Mech Inspector
 (310) 732-4558
 paul.becker@lacity.org

RESIDENTIAL/ZONING
VACANT
 Sr Build Mech Inspector
 (213) 482-7278
 @lacity.org

METRO TRACKS
MIKE FAUNCE
 Sr Build Mech Inspector
 (213) 202-3122
 michael.faunce@lacity.org

CODE ENFORCEMENT BUREAU

JOHN BIEZINS, Chief

(213) 252-3902

john.biezins@lacity.org

FRANK LARA, Assistant Chief

(213) 252-3310

frank.lara@lacity.org

FAITH MAULUPE
Principal Clerk
(213) 252-3376
faith.maulupe@lacity.org

GENERAL ENFORCEMENT & SPECIALTY/SIGNS INSPECTION

JOHN WHIPPLE

Chief Inspector
(213) 252-3040

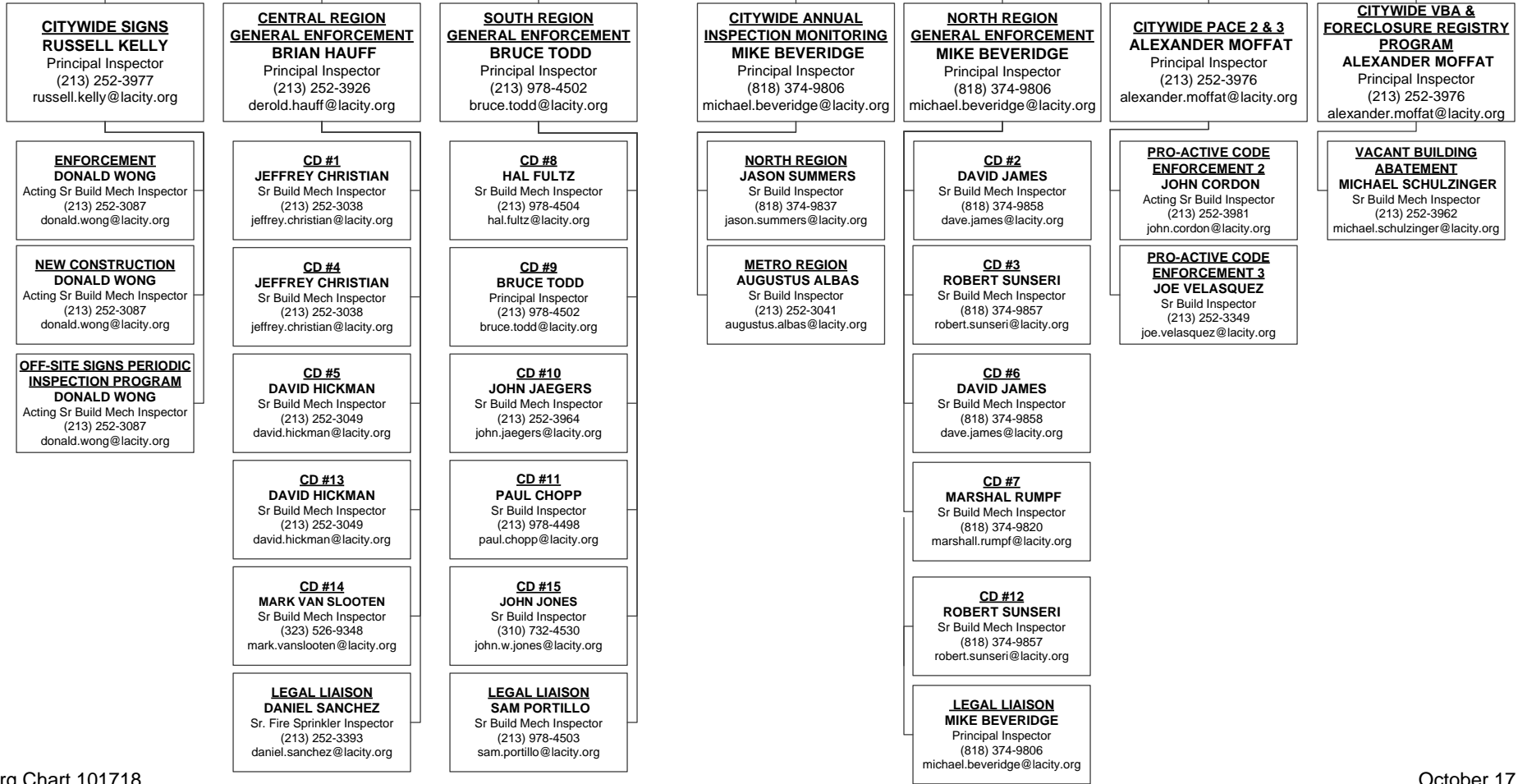
john.whipple@lacity.org

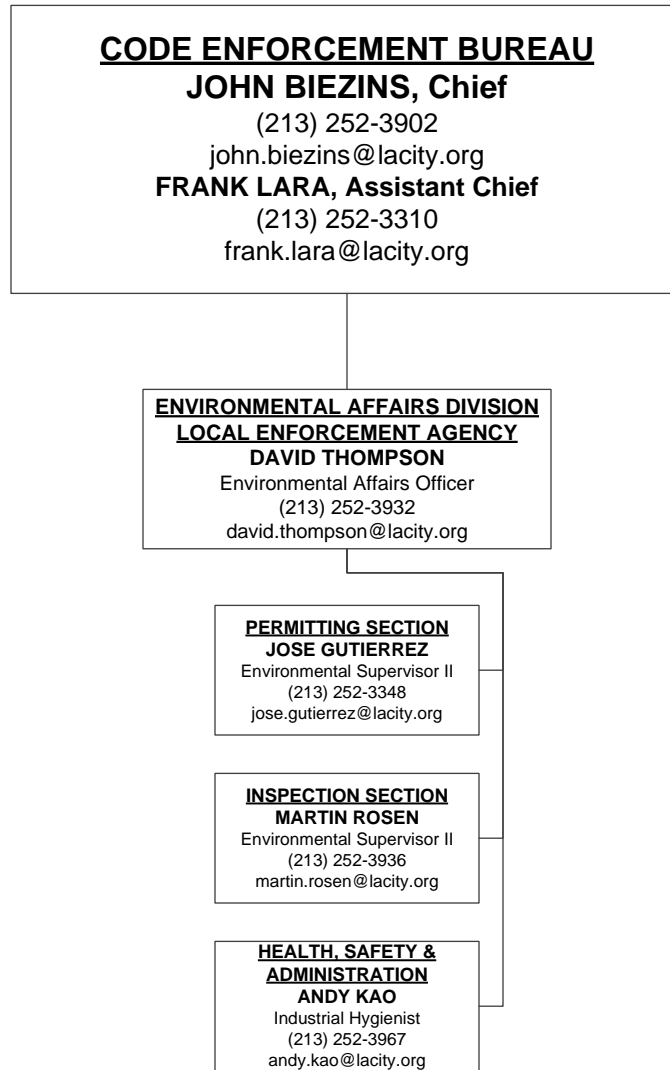
GENERAL ENFORCEMENT, ANNUAL INSPECTION MONITORING, PROACTIVE CODE ENFORCEMENT, & VACANT BUILDING ABATEMENT

ANDREW LONGORIA

Chief Inspector
(213) 252-3931

andrew.longoria@lacity.org





RESOURCE MANAGEMENT BUREAU
STEVE ONGELE, Chief
 (213) 482-6703
 steve.ongele@lacity.org
ANA MAE YUTAN, Assistant Chief
 Chief Mgmt Analyst
 (213) 482-6782
 anamae.yutan@lacity.org

ADMINISTRATIVE SERVICES DIVISION
ZACHARY DE CORSE
 Sr Mgmt Analyst II
 (213) 482-6746
 zachary.decorse@lacity.org

FINANCIAL SERVICES DIVISION
CYNTHIA KHO
 Dept Chief Accountant III
 (213) 482-6815
 cynthia.kho@lacity.org

RISK & RECORDS MANAGEMENT DIVISION
TERESA ABRAHAM
 Sr Mgmt Analyst II
 (213) 482-6766
 teresa.abraham@lacity.org

PURCHASING SUPERVISOR, FACILITIES MANAGEMENT, AND FORMS CONTROL
SOMAPUN PONGQUAN
 Sr Mgmt Analyst I
 (213) 482-6748
 somapun.pongquan@lacity.org

CHRISTINA TABIRARA
 Principal Accountant II
 (213) 482-6804
 christina.tabirara@lacity.org

CASHIERING SERVICES
VICTORIA VASQUEZ
 Chief Cashier
 (213) 482-6953
 mariavictoria.vasquez@lacity.org

CUSTODIAN OF RECORDS
HAZEL HARRIS
 Management Analyst II
 (213) 482-6765
 hazel.harris@lacity.org

CONTRACT AND GRANT ADMINISTRATOR, COMMUNICATION SERVICES, REPORTS MANAGER, AND TRAVEL COORDINATOR
CHRISTINE WAI
 Sr Mgmt Analyst I
 (213) 482-6740
 christine.wai@lacity.org

ACCOUNTS PAYABLE
EMILY HU
 Sr Accountant I
 (213) 482-6534
 emily.hu@lacity.org

PRECY SANCHEZ
 Accounting Rec Supvr I
 (213) 482-6955
 precy.sanchez@lacity.org

DATA AND RECORDS MANAGEMENT
VICTORIA LIRA
 Chief Clerk
 (213) 482-6757
 victoria.lira@lacity.org

SIB PROCESSING, DATA SUBSCRIPTIONS & CLERICAL SUPPORT
QUYEN TU
 Acting Sr Admin Clerk
 (213) 482-6710
 quyen.tu@lacity.org

SUPPLIES
JOHN BOROUGH
 Store Keeper II
 (213) 482-6813
 john.borough@lacity.org

TONY PELAEZ
 Sr Mgmt Analyst II
 (213) 482-6816
 tony.pelaez@lacity.org

IDIS & SUBJECT SPECIALTY CALL GROUP
CHAUNTEL MARTIN
 Principal Clerk
 (213) 482-6560
 chauntel.martin@lacity.org

PAYROLL AND FUND ADMIN
EMMA PANGILINAN
 Sr Accountant I
 (213) 482-7347
 emma.pangilinan@lacity.org

LIENS
CHARLES KALIBBALA
 Sr Accountant I
 (213) 202-9829
 charles.kalibbala@lacity.org

SUBJECT SPECIALTY CALL GROUP
LORENA ESPINOZA
 Sr Admin Clerk
 (213) 482-6549
 lorena.espinosa@lacity.org

