



# ORGANIZATIONAL CHART & TELEPHONE DIRECTORY

This directory is designed to:

1. Give users direct access to the Department's top-level management and supervisory personnel, and
2. To see where the managers and supervisors fit into the Department's chain-of-command structure.

FOR AUTOMATED INSPECTION REQUESTS ONLY,  
YOU MAY CALL TOLL FREE FROM ANYWHERE  
IN LOS ANGELES COUNTY:

**1-888-LA-4-BUILD**

OR

OUTSIDE LOS ANGELES COUNTY

213-482-0000

TDD Line 888-833-8389

FOR ALL OTHER SERVICES OR INFORMATION WITHIN  
THE CITY OF LOS ANGELES

**3-1-1**

OR

OUTSIDE LOS ANGELES CITY

1-213-473-3231

*For more information regarding the Los Angeles Department of Building and Safety, please visit [www.ladbs.org](http://www.ladbs.org).*



LADBS ADMINISTRATIVE/HEADQUARTER OFFICES  
 201 NORTH FIGUEROA STREET, SUITE 1000  
 LOS ANGELES, CALIFORNIA 90012

**PERMIT/DEVELOPMENT SERVICES OFFICES**

**INSPECTION OFFICES**

**CODE ENFORCEMENT OFFICES**

DEVELOPMENT SERVICES CASE MANAGEMENT OFFICE  
 201 N. Figueroa Street, Suite 1030  
 Los Angeles, CA 90012

METRO DEVELOPMENT SERVICES CENTER  
 201 N. Figueroa Street, 4<sup>th</sup> Floor Los Angeles, CA 90012  
 Permit and Engineering Bureau Administration – 10<sup>th</sup> Floor  
 Records Research and Express Permits – 1<sup>st</sup> Floor  
 Plan Check – 4<sup>th</sup> Floor (Electrical and Mechanical)  
 Electrical and Mechanical Engineering – 5<sup>th</sup> Floor  
 Green Buildings – 5<sup>th</sup> Floor  
 Disabled Access Appeals – 8<sup>th</sup> Floor  
 Structural Engineering Research – 8<sup>th</sup> Floor  
 Boards of Building and Safety Commissioners – 10<sup>th</sup> Floor  
 Engineering Plan Check – 10<sup>th</sup> Floor

VAN NUYS DEVELOPMENT SERVICES CENTER  
 6262 Van Nuys Boulevard, 2<sup>nd</sup> Floor, Room 251  
 Van Nuys, CA 91401

WEST LOS ANGELES DEVELOPMENT SERVICES CENTER  
 1828 Sawtelle Boulevard, 2<sup>nd</sup> Floor  
 Los Angeles, CA 90025

SAN PEDRO DEVELOPMENT SERVICES CENTER  
 638 S. Beacon Street, 2<sup>nd</sup> Floor, San Pedro, CA 90731

SOUTH LOS ANGELES DEVELOPMENT SERVICES CENTER  
 8475 S. Vermont Avenue, 2<sup>nd</sup> Floor  
 Los Angeles, CA 90044

TEST LAB  
 Electrical Testing Lab  
 201 N. Figueroa Street, Suite 500, Los Angeles, CA 90012  
  
 Mechanical Testing Lab  
 201 N. Figueroa Street, Suite 500, Los Angeles, CA 90012

INSPECTION BUREAU  
 221 N. Figueroa Street, 7<sup>th</sup>, 8<sup>th</sup> and 12<sup>th</sup> Floors  
 Los Angeles, CA 90012  
 Bureau Management – 8<sup>th</sup> Floor

Commercial Inspection, Building Insp. Division - 7<sup>th</sup> Floor  
 (Electrical, HVAC, Plumbing, Fire Sprinkler & Mechanical)  
 Materials Control – 7<sup>th</sup> Floor  
 Special Events – 7<sup>th</sup> Floor  
 Investigations/Earthquake Safety/Hi-Rise Retrofit – 7<sup>th</sup> Floor  
 Certified Licensing Contractor – 7<sup>th</sup> Floor  
 Trade Licensing – 7<sup>th</sup> Floor  
 Residential Inspection – 8<sup>th</sup> Floor  
 Elevator and Pressure Vessels – 8<sup>th</sup> Floor  
 Inspection Case Management – 8<sup>th</sup> Floor  
 Restaurant and Hospitality Express Program – 8<sup>th</sup> Floor  
 Inspections and Investigations – 8<sup>th</sup> Floor  
 Training and Emergency Management Division – 8<sup>th</sup> Floor  
 Grading and Engineering Inspection – 12<sup>th</sup> Floor

VAN NUYS INSPECTION DIVISION  
 6262 Van Nuys Boulevard, Ste. 200  
 Van Nuys, CA 91401

19040 Vanowen Street  
 Reseda, CA 91335  
 Residential Inspection

WEST LOS ANGELES INSPECTION DIVISION  
 11620 Wilshire Boulevard, Suite 1100  
 Los Angeles, CA 90025

SAN PEDRO COMMERCIAL & RESIDENTIAL  
 INSPECTION DIVISIONS  
 638 S. Beacon Street, 2<sup>nd</sup> Floor  
 San Pedro, CA 90731

CODE ENFORCEMENT BUREAU  
 221 N. Figueroa Street, 11<sup>th</sup> and 12<sup>th</sup> Floors  
 Los Angeles, CA 90012

CENTRAL REGION  
 Centralized Specialty Division – 11<sup>th</sup> Floor  
 Administration and Liens – 11<sup>th</sup> Floor  
 Pro Active Code Enforcement – 11<sup>th</sup> Floor  
 Vacant Building Abatement – 11<sup>th</sup> Floor  
 Signs-Enforcement & New – 11<sup>th</sup> Floor  
 Off-Site Signs Program – 11<sup>th</sup> Floor  
 General Code Enforcement – 11<sup>th</sup> Floor  
 Annual Inspection Monitoring – 11<sup>th</sup> Floor  
 Local Enforcement Agency – 12<sup>th</sup> Floor

2130 E. 1<sup>st</sup> Street – 4<sup>th</sup> Floor, Suite 2101  
 Los Angeles, CA 90033

CEIS Development Team  
 201 N. Figueroa Street, 9<sup>th</sup> Floor  
 Los Angeles, CA 90012

NORTH REGION  
 Van Nuys City Hall  
 14410 Sylvan Street, Suite 10  
 Los Angeles, CA 91401

SOUTH REGION  
 8475 S. Vermont Avenue, Suite 200  
 Los Angeles, CA 90044

4301 S. Central Avenue  
 Los Angeles, CA 90011

7166 Manchester Avenue, Suite 10A  
 Los Angeles, CA 90045

638 Beacon Street, Suite 276  
 San Pedro, CA 90701

# TELEPHONE DIRECTORY INDEX

## DEPARTMENT OF BUILDING AND SAFETY

Executive and Bureau Management .....	Chart 1
Government and Community Relations Management .....	Chart 2

## PERMIT AND ENGINEERING BUREAU

Permit and Engineering Bureau Management .....	Chart 3
Structural Plan Check Division	
Metro Plan Check .....	Chart 4
Van Nuys District Office .....	Chart 4
West LA District Office .....	Chart 4
Soft Story Retrofit Program .....	Chart 4
Counter Operations	
Metro Plan Check .....	Chart 5
South LA District Office .....	Chart 5
Van Nuys District Office .....	Chart 5
West LA District Office .....	Chart 5
San Pedro District Office .....	Chart 5
Green/Electrical/Mechanical (GEM) Plan Check Division .....	Chart 6
Green Building Plan Check / Inspection	
Mechanical Plan Check and Test Lab	
Electrical Plan Check and Test Lab	

## INSPECTION BUREAU

Commercial Building Inspection .....	Chart 7
Elevator and Pressure Vessel .....	Chart 7
Commercial Inspection .....	Chart 8
Plumbing, Heating and Fire Sprinkler / Electrical	
Residential Inspection .....	Chart 9
Metro / Van Nuys / West LA / San Pedro	
Grading Engineering and Inspection .....	Chart 9
Training and Emergency Management Division .....	Chart 9

## CODE ENFORCEMENT BUREAU

Citywide Signs Code Enforcement .....	Chart 10
General Enforcement and Annual Inspection Monitoring .....	Chart 10
Citywide Pro-Active Code Enforcement .....	Chart 10
Citywide Vacant Building Abatement and Foreclosure Registry Program .....	Chart 10
Environmental Affairs Division, Local Enforcement Agency .....	Chart 11

## RESOURCE MANAGEMENT BUREAU

Administrative Services Division .....	Chart 12
Financial Services Division .....	Chart 12
Personnel Services Division .....	Chart 12
Risk and Records Management Division .....	Chart 12

## TECHNOLOGY SERVICES BUREAU

Project Management Division .....	Chart 13
Application Services Division .....	Chart 13
Operations and Infrastructure Division .....	Chart 13
BuildLA Office .....	Chart 13

## DEVELOPMENT SERVICES CASE MANAGEMENT

Case Management .....	Chart 14
Case Management	
Preliminary Review	
Concierge Services	
LAX .....	Chart 14

DEPARTMENT OF BUILDING AND SAFETY

Chart 1

**FRANK M. BUSH**  
**GENERAL MANAGER**  
(213) 482-6800  
frank.bush@lacity.org

**DEVELOPMENT SERVICES/  
CASE MANAGEMENT**  
**ARA SARGSYAN**, Chief  
(213) 482-6864  
ara.sargsyan@lacity.org  
(See Chart 14)

**EXECUTIVE OFFICER**  
**OSAMA YOUNAN**  
(213) 482-6800  
osama.younan@lacity.org

**GOVERNMENT & COMMUNITY  
RELATIONS / CODE STUDIES**  
**CATHERINE NUEZCA-GABA**,  
Director  
(213) 482-6800  
catherine.nuezcagaba@lacity.org  
(See Chart 2)

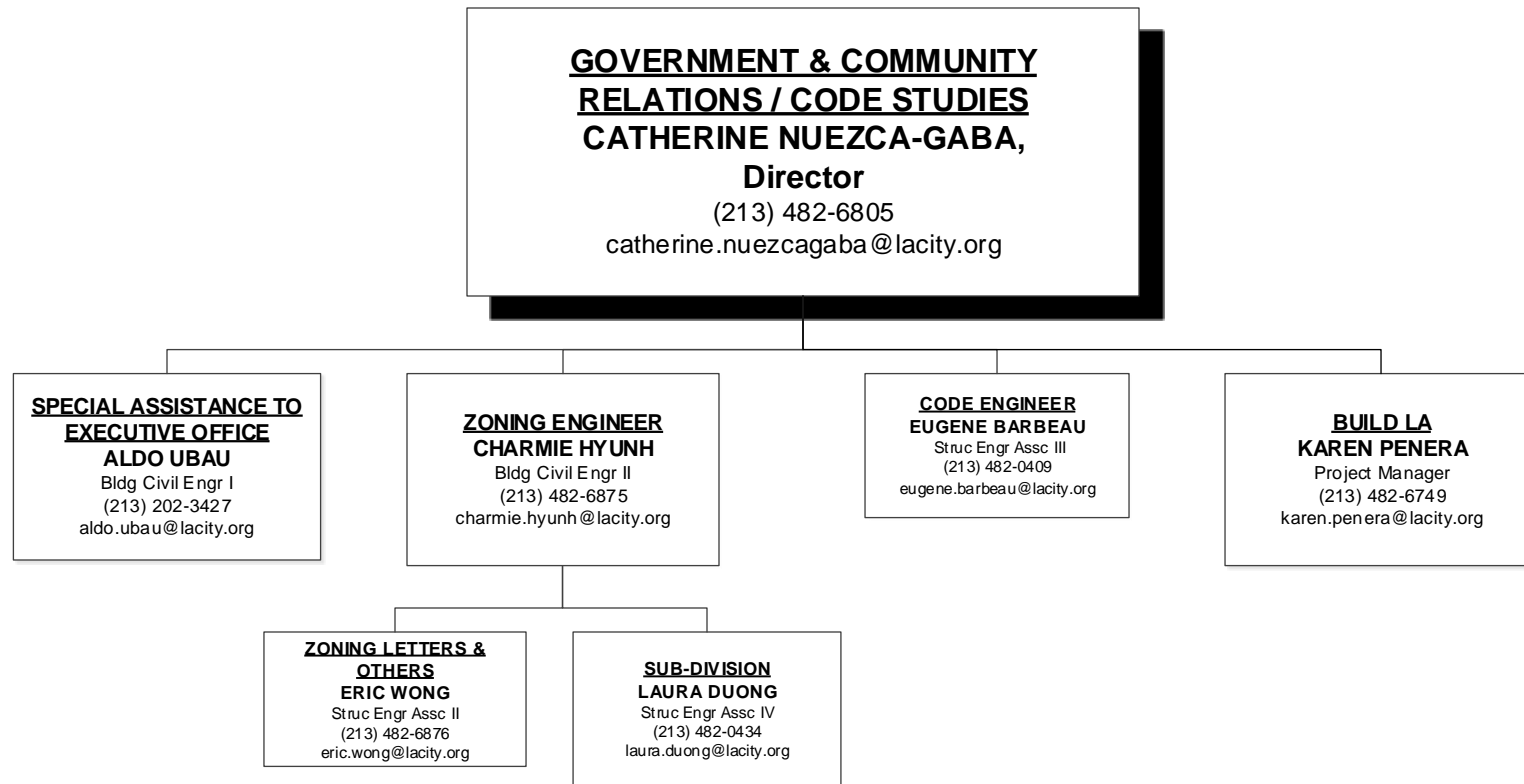
**PERMIT AND ENGINEERING BUREAU**  
**IFA KASHEFI**, Chief  
(213) 482-0440  
ifa.kashefi@lacity.org  
(See Charts 3, 4, 5 & 6)

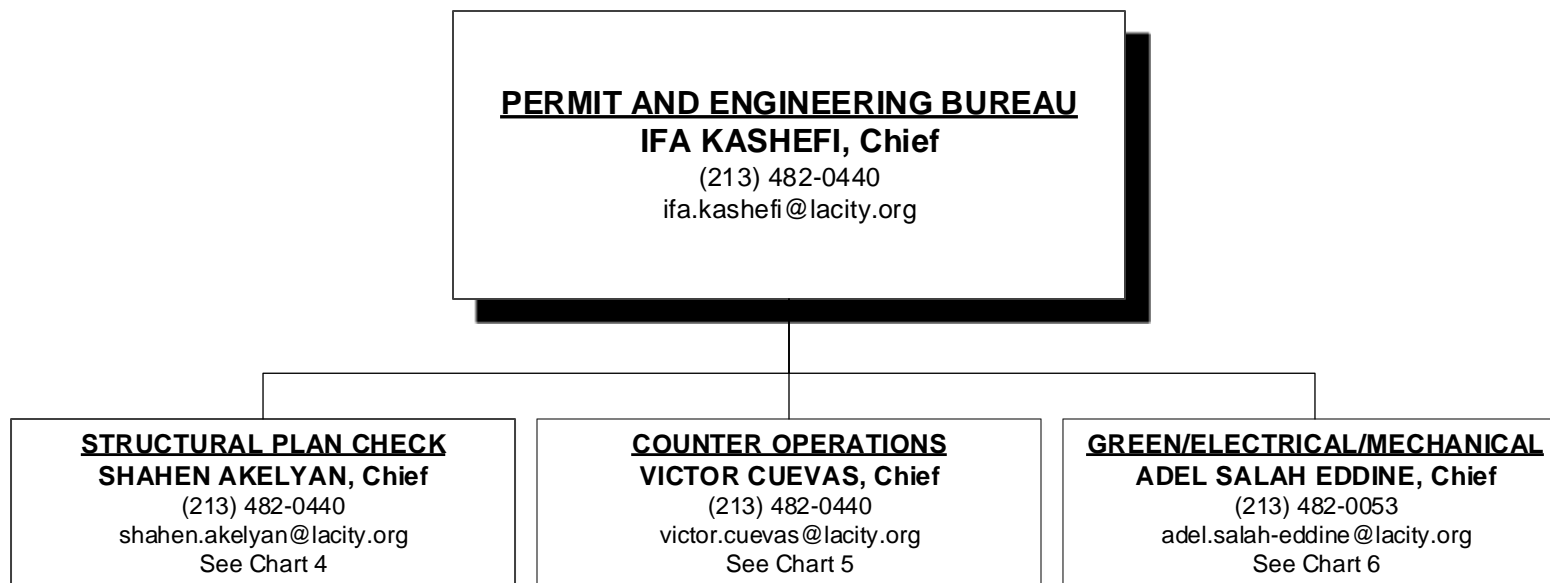
**RESOURCE MANAGEMENT BUREAU**  
**STEVE ONGELE**, Chief  
(213) 482-6703  
steve.ongele@lacity.org  
(See Chart 12)

**INSPECTION BUREAU**  
**PASCAL CHALLITA**, Chief  
(213) 482-6712  
pascal.challita@lacity.org  
(See Charts 7,8, & 9)

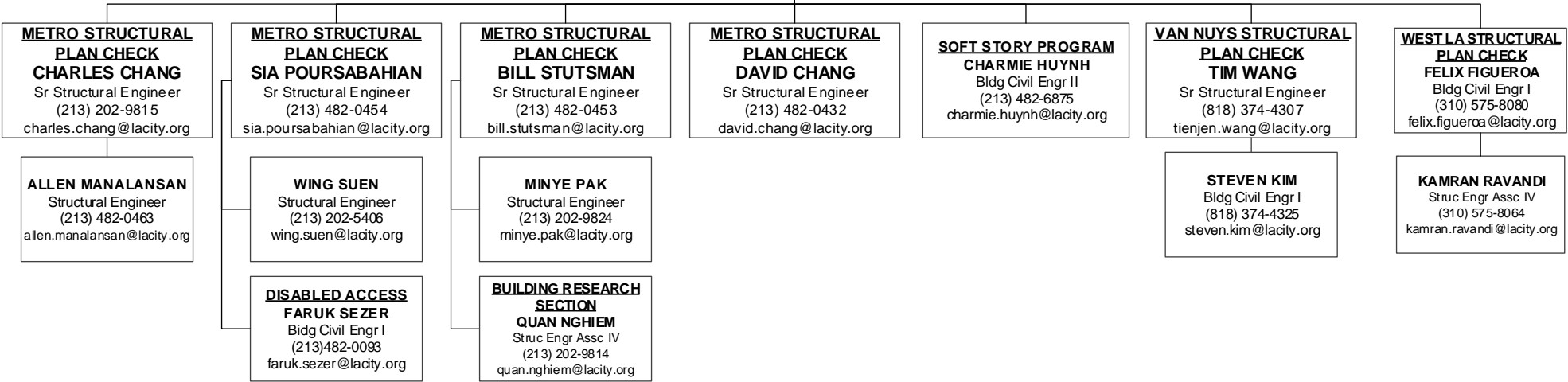
**CODE ENFORCEMENT BUREAU**  
**JOHN BIEZINS**, Chief  
(213) 252-3902  
john.biezins@lacity.org  
(See Charts 10 & 11)

**TECHNOLOGY SERVICES BUREAU**  
**VACANT**, Chief  
(213) 482-0001  
@lacity.org  
(See Chart 13)

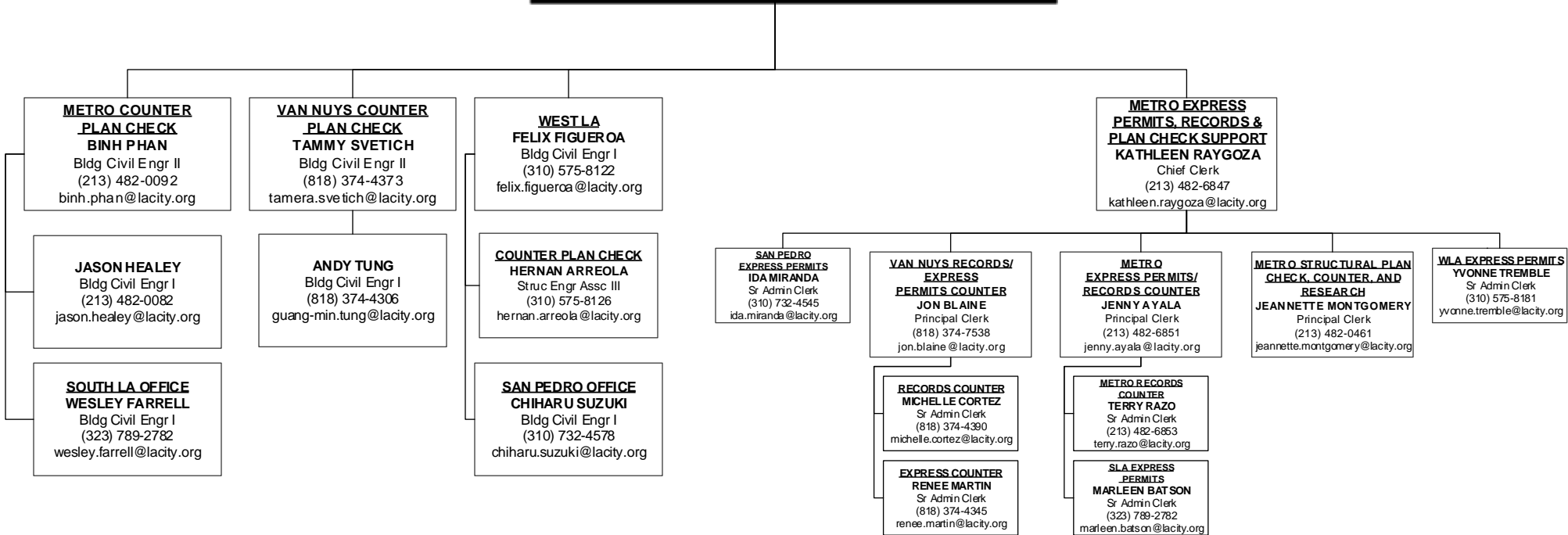




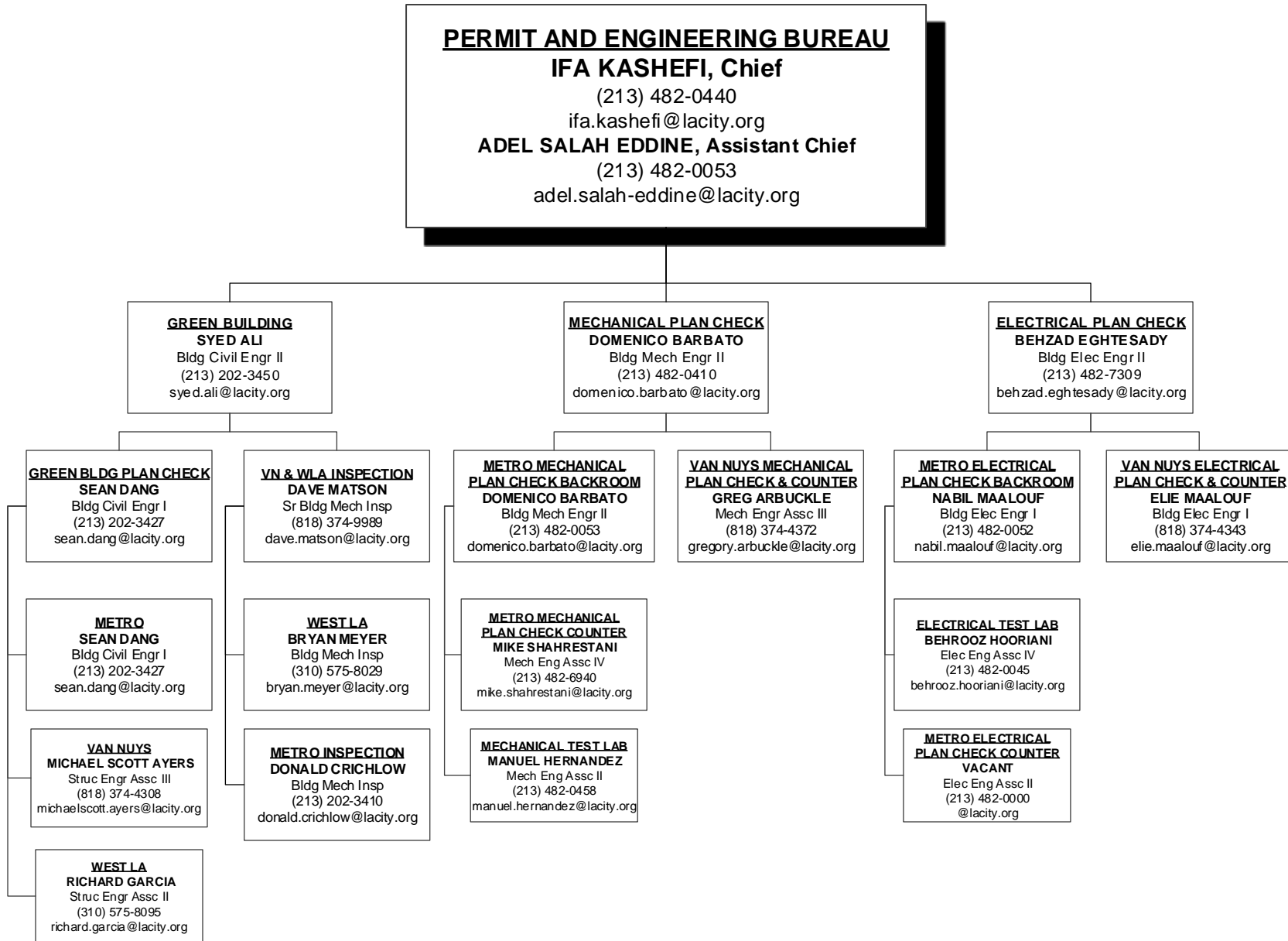
**PERMIT AND ENGINEERING BUREAU**  
**IFA KASHEFI, Chief**  
 (213) 482-0440  
 ifa.kashefi@lacity.org  
**SHAHEN AKELYAN, Assistant Chief**  
 Asst Dep Sup of Bldg II  
 (213) 482-0440  
 shahen.akelyan@lacity.org



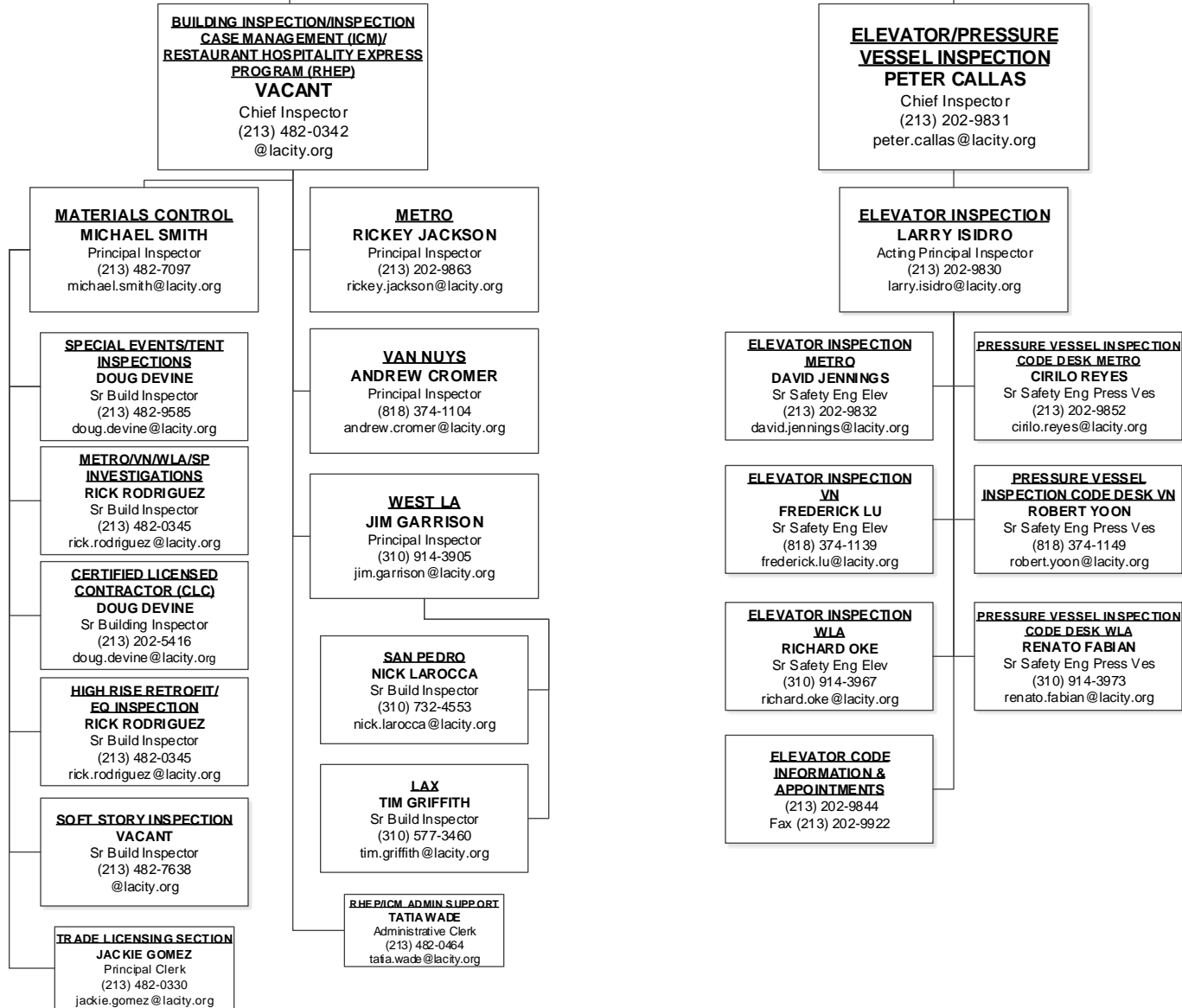
**PERMIT AND ENGINEERING BUREAU**  
**IFA KASHEFI, Chief**  
 (213) 482-0440  
 ifa.kashefi@lacity.org  
**VICTOR CUEVAS, Assistant Chief**  
 (213) 482-0440  
 victor.cuevas@lacity.org







**INSPECTION BUREAU**  
**PASCAL CHALLITA, Chief**  
 (213) 482-6712  
 pascal.challita@lacity.org  
**JOHN WEIGHT, Assistant Chief**  
 (213) 482-0342  
 john.weight@lacity.org



**INSPECTION BUREAU**  
**PASCAL CHALLITA, Chief**  
 (213) 482-6712  
 pascal.challita@lacity.org  
**JOHN WEIGHT, Assistant Chief**  
 (213) 482-0342  
 john.weight@lacity.org

**PLUMBING/HEATING AND  
 FIRE SPRINKLER INSPECTION**  
**KIM ARTHUR**  
 Chief Inspector  
 (213) 482-6787  
 kim.arther@lacity.org

**ELECTRICAL INSPECTION**  
**MICHAEL PACKARD**  
 Acting Chief Inspector  
 (213) 202-9906  
 michael.packard@lacity.org

**PLUMBING/HEATING/FIRE  
 SPRINKLER INSPECTION**  
**SHAWN HARGIS**  
 Principal Inspector  
 (213) 482-0354  
 denver.hargis@lacity.org

**ELECTRICAL INSPECTION**  
**MICHAEL PACKARD**  
 Principal Inspector  
 (213) 202-9906  
 michael.packard@lacity.org

**METRO**  
**PRESTON GILLIARD, Sr Plumbing**  
 (213) 482-0420 – preston.gilliard@lacity.org  
**STEVEN KIMBLE, Sr Fire Sprinkler**  
 (213) 202-9885 – steven.kimble@lacity.org  
**VICENTE VARGAS, Sr HVAC**  
 (213) 202-5614 – vicente.vargas@lacity.org

**VAN NUYS**  
**CORNELL EWELL, Sr Plumbing**  
 (818) 374-1154 – cornell.ewell@lacity.org  
**JOSEPH TAYLOR, Sr Fire Sprinkler**  
 (818) 374-1142 – joseph.taylor@lacity.org  
**KEVIN BROWN, Sr HVAC**  
 (818) 374-1153 – kevin.brown@lacity.org

**METRO**  
**JOHNNY YUTRONICH**  
 Sr Electrical Inspector  
 (213) 202-3176  
 johnny.yutronich@lacity.org

**VAN NUYS**  
**DOUG VERRAL**  
 Sr Electrical Inspector  
 (818) 374-1136  
 douglas.verral@lacity.org

**WEST LA**  
**JIM EMPERO, Sr Plumbing**  
 (310) 914-3949 – james.empero@lacity.org  
**JOHN BARTON, Sr Fire Sprinkler**  
 (310) 914-3955 – john.barton@lacity.org  
**CHRISTOPHER NORRIS, Sr HVAC**  
 (310) 914-3961 – christopher.norris@lacity.org

**SAN PEDRO**  
**MICHAEL LUNG**  
 Plumbing Inspector  
 (310) 732-4546  
 michael.lung@lacity.org

**WEST LA**  
**JOHN DESPARD**  
 Sr Electrical Inspector  
 (310) 914-3942  
 john.despard@lacity.org

**SAN PEDRO**  
**BILL MITCHELL**  
 Sr Electrical Inspector  
 (310) 732-4549  
 william.mitchell@lacity.org

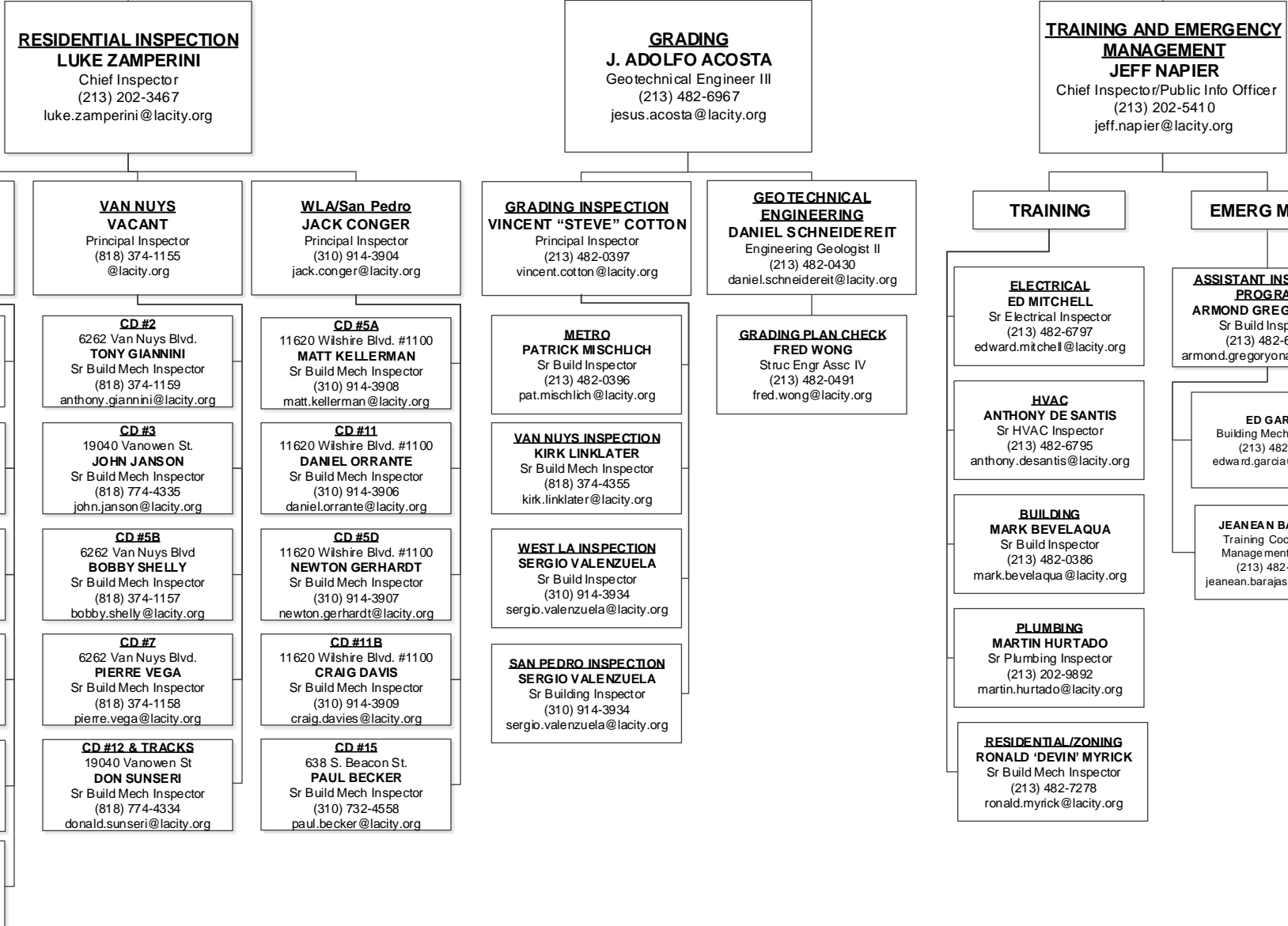
**LAX**  
**KARIN IZUMI, Sr Fire Sprinkler**  
 (213) 473-2143 – karin.izumi@lacity.org  
**DEXTER JACKSON, Sr Plumbing**  
 (213) 473-2151 – dexter.jackson@lacity.org  
**KEVIN KIDD, Sr HVAC**  
 (213) 473-2142 – kevin.kidd@lacity.org

**LAX**  
**ERIC BANE**  
 Sr Electrical Inspector  
 (310) 473-2150  
 eric.bane@lacity.org

**ELECTRICAL CODE INFORMATION**  
**MICHAEL KION**  
 Sr Electrical Inspector  
 (213) 482-0057  
 michael.kion@lacity.org

**PLUMBING CODE INFORMATION**  
 (213) 482-0061  
 Fax (213) 482-7410

**INSPECTION BUREAU**  
**PASCAL CHALLITA, Chief**  
 (213) 482-6712  
 pascal.challita@lacity.org  
**ERIC JAKEMAN, Assistant Chief**  
 (213) 202-9869  
 eric.jakeman@lacity.org



**CODE ENFORCEMENT BUREAU**

**JOHN BIEZINS, Chief**

(213) 252-3902

john.biezins@lacity.org

**FRANK LARA, Assistant Chief**

(213) 252-3310

frank.lara@lacity.org

**FAITH MAULUPE**  
Principal Clerk  
(213) 252-3376  
faith.maulupe@lacity.org

**GENERAL ENFORCEMENT & SPECIALTY/SIGNS INSPECTION**

**JOHN WHIPPLE**

Acting Chief Inspector  
(213) 252-3040  
john.whipple@lacity.org

**GENERAL ENFORCEMENT, ANNUAL INSPECTION MONITORING, PROACTIVE CODE ENFORCEMENT, & VACANT BUILDING ABATEMENT**

**ANDREW LONGORIA**

Chief Inspector  
(213) 252-3931  
andrew.longoria@lacity.org

**CITYWIDE SIGNS**  
**RUSSELL KELLY**  
Principal Inspector  
(213) 252-3977  
russell.kelly@lacity.org

**CENTRAL REGION GENERAL ENFORCEMENT**  
**RUSSELL KELLY**  
Principal Inspector  
(213) 252-3977  
russell.kelly@lacity.org

**SOUTH REGION GENERAL ENFORCEMENT**  
**BRUCE TODD**  
Acting Principal Inspector  
(213) 978-4502  
bruce.todd@lacity.org

**CITYWIDE ANNUAL INSPECTION MONITORING**  
**VACANT**  
Principal Inspector  
(213) 252-3931  
@lacity.org

**NORTH REGION GENERAL ENFORCEMENT**  
**VACANT**  
Principal Inspector  
(818) 374-9846  
@lacity.org

**CITYWIDE PAGE 2 & 3**  
**ALEXANDER MOFFAT**  
Principal Inspector  
(213) 252-3976  
alexander.moffat@lacity.org

**CITYWIDE VBA & FORECLOSURE REGISTRY PROGRAM**  
**ALEXANDER MOFFAT**  
Principal Inspector  
(213) 252-3976  
alexander.moffat@lacity.org

**ENFORCEMENT**  
**DONALD WONG**  
Acting Sr Build Mech Inspector  
(213) 252-3087  
donald.wong@lacity.org

**CD #1**  
**JEFFREY CHRISTIAN**  
Sr Build Mech Inspector  
(213) 252-3038  
jeffrey.christian@lacity.org

**CD #8 & #9**  
**HAL FULTZ**  
Sr Build Mech Inspector  
(213) 978-4504  
hal.fultz@lacity.org

**NORTH REGION**  
**JASON SUMMERS**  
Sr Build Inspector  
(818) 374-9837  
jason.summers@lacity.org

**CD #2**  
**DAVID JAMES**  
Sr Build Mech Inspector  
(818) 374-9858  
dave.james@lacity.org

**PRO-ACTIVE CODE ENFORCEMENT 2**  
**GENE DIORIO**  
Sr Build Inspector  
(213) 252-3352  
gene.diorio@lacity.org

**VACANT BUILDING ABATEMENT**  
**MICHAEL SCHULZINGER**  
Sr Build Mech Inspector  
(213) 252-3962  
michael.schulzinger@lacity.org

**NEW CONSTRUCTION**  
**DONALD WONG**  
Acting Sr Build Mech Inspector  
(213) 252-3087  
donald.wong@lacity.org

**CD #4**  
**STANLEY YU**  
Sr Build Mech Inspector  
(213) 252-3354  
stanley.yu@lacity.org

**CD #10**  
**JOHN JAEGERS**  
Sr Build Mech Inspector  
(213) 252-3964  
john.jaegers@lacity.org

**METRO REGION**  
**AUGUSTUS ALBAS**  
Sr Build Inspector  
(213) 252-3041  
augustus.albas@lacity.org

**CD #3**  
**ROBERT SUNSERI**  
Sr Build Mech Inspector  
(818) 374-9857  
robert.sunseri@lacity.org

**PRO-ACTIVE CODE ENFORCEMENT 3**  
**JOE VELASQUEZ**  
Sr Build Inspector  
(213) 252-3349  
joe.velasquez@lacity.org

**OFF-SITE SIGNS PERIODIC INSPECTION PROGRAM**  
**DONALD WONG**  
Acting Sr Build Mech Inspector  
(213) 252-3087  
donald.wong@lacity.org

**CD #5**  
**DAVID HICKMAN**  
Sr Build Mech Inspector  
(213) 252-3049  
david.hickman@lacity.org

**CD #11**  
**PAUL CHOPP**  
Sr Build Inspector  
(213) 978-4498  
paul.chopp@lacity.org

**CD #6**  
**DAVID JAMES**  
Sr Build Mech Inspector  
(818) 374-9858  
dave.james@lacity.org

**CD #13**  
**DAVID HICKMAN**  
Sr Build Mech Inspector  
(213) 252-3049  
david.hickman@lacity.org

**CD #15**  
**JOHN JONES**  
Sr Build Inspector  
(310) 732-4530  
john.w.jones@lacity.org

**CD #7**  
**MARSHAL RUMPF**  
Sr Build Mech Inspector  
(818) 374-9820  
marshall.rumpf@lacity.org

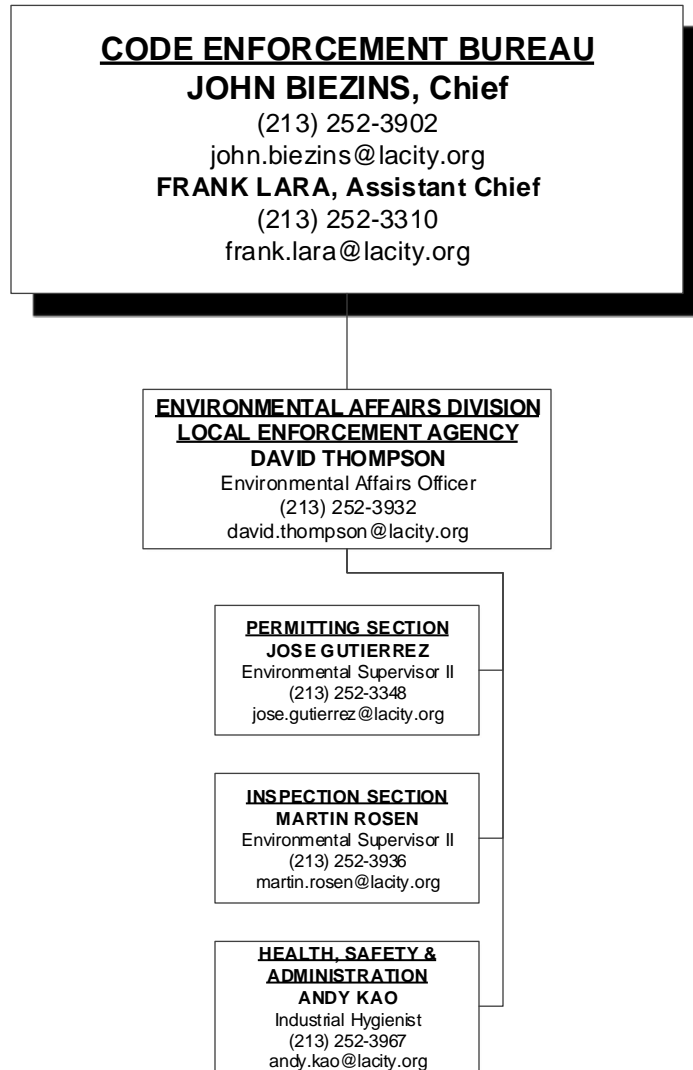
**CD #14**  
**MARK VAN SLOOTEN**  
Sr Build Mech Inspector  
(323) 526-9348  
mark.vanslooten@lacity.org

**LEGAL LIAISON**  
**SAM PORTILLO**  
Sr Build Mech Inspector  
(213) 978-4503  
sam.portillo@lacity.org

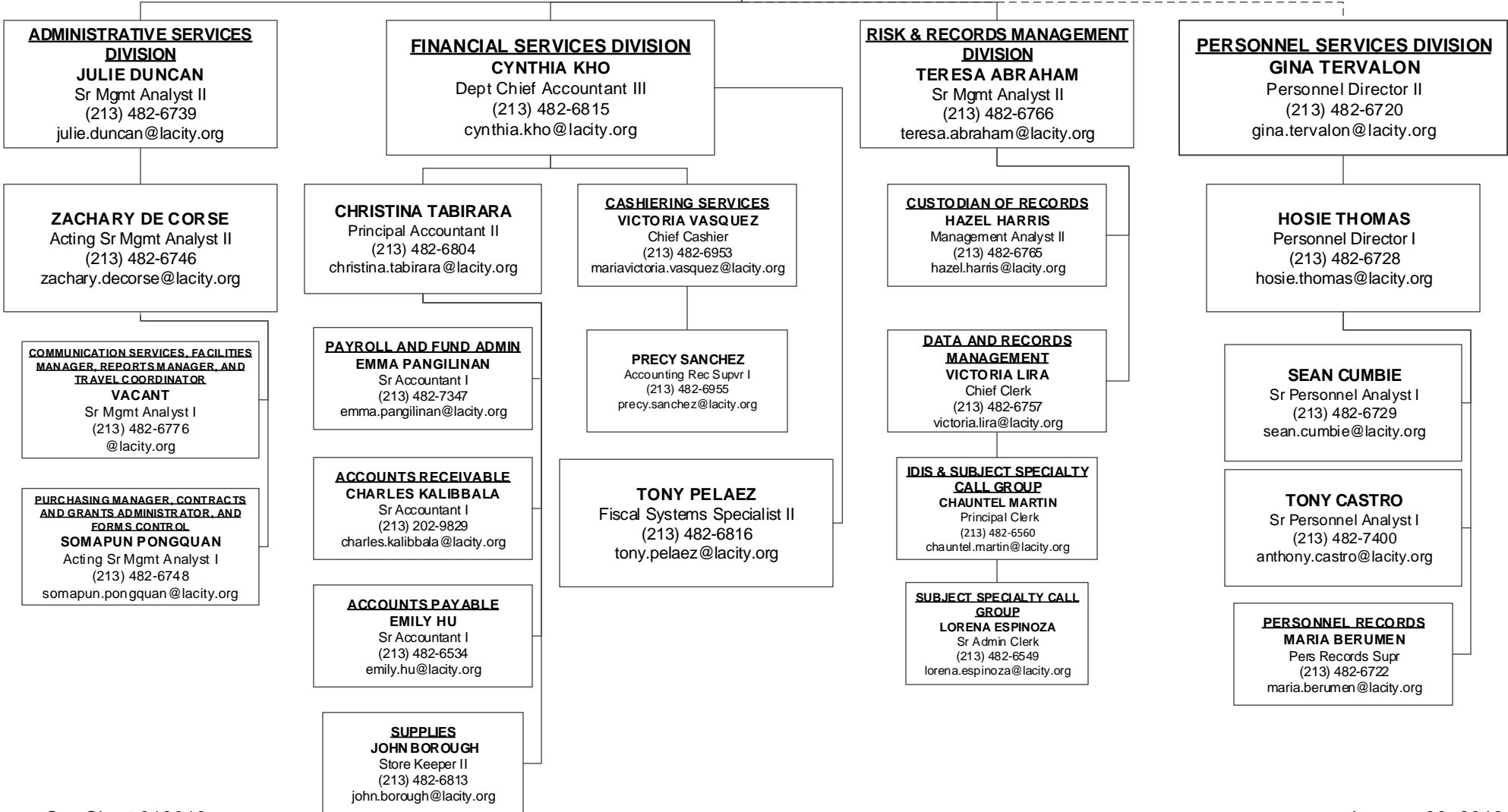
**CD #12**  
**ROBERT SUNSERI**  
Sr Build Mech Inspector  
(818) 374-9857  
robert.sunseri@lacity.org

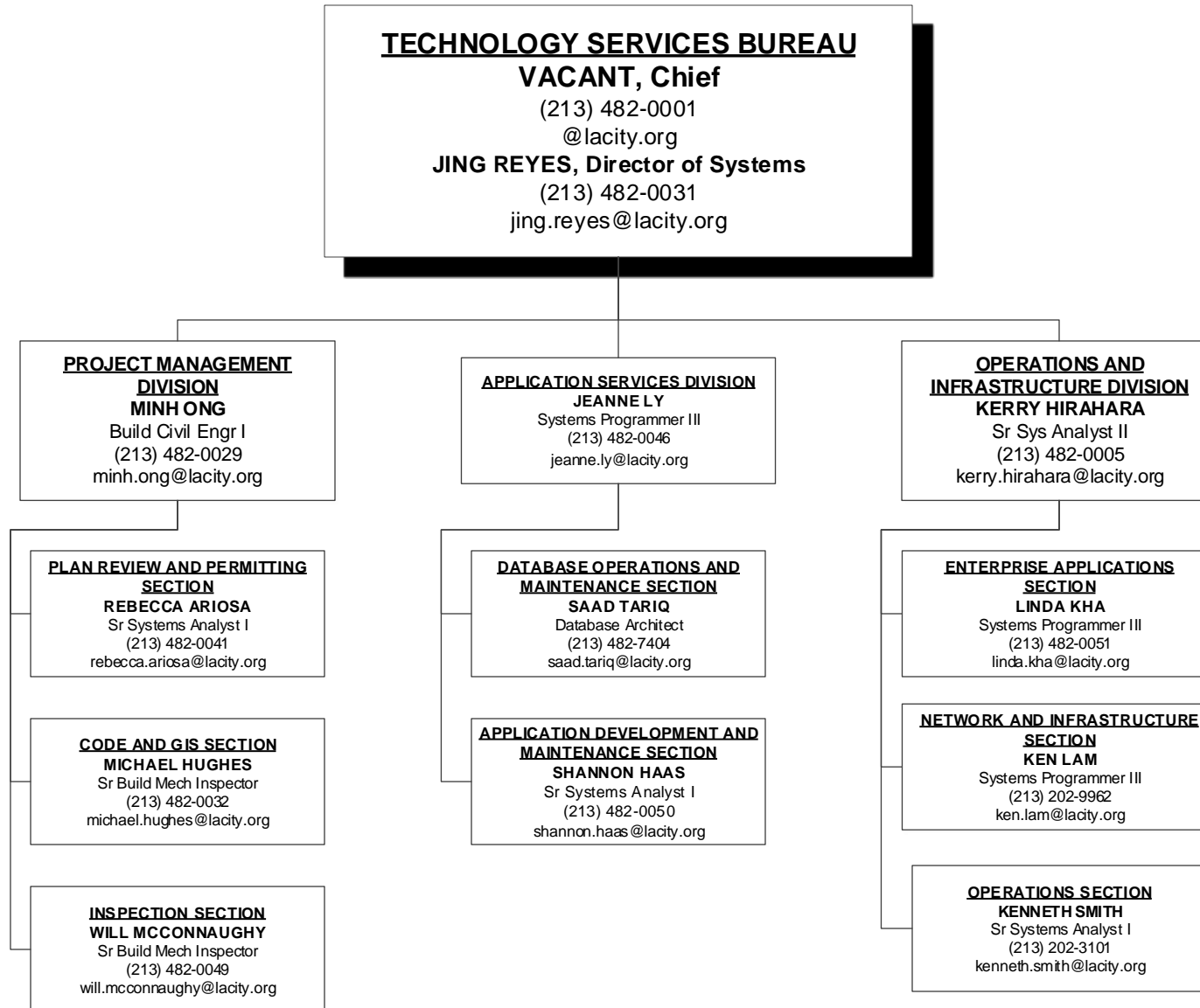
**LEGAL LIAISON**  
**DANIEL SANCHEZ**  
Sr. Fire Sprinkler Inspector  
(213) 252-3393  
daniel.sanchez@lacity.org

**LEGAL LIAISON**  
**MIKE BEVERIDGE**  
Sr Build Mech Inspector  
(818) 374-9859  
michael.beveridge@lacity.org

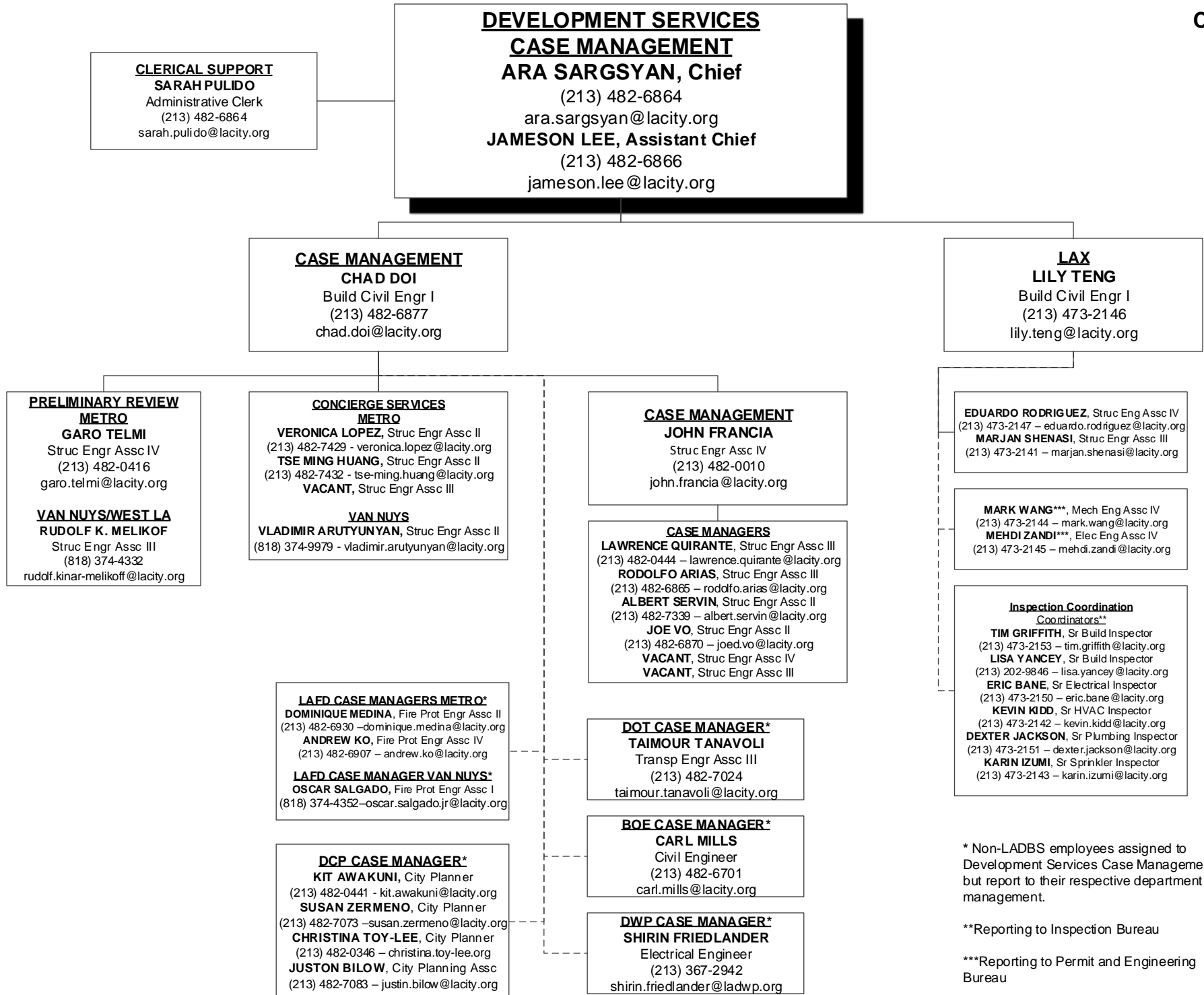


**RESOURCE MANAGEMENT BUREAU**  
**STEVE ONGELE, Chief**  
 (213) 482-6703  
 steve.ongele@lacity.org  
**ANA MAE YUTAN, Assistant Chief**  
 Chief Mgmt Analyst  
 (213) 482-6782  
 anamae.yutan@lacity.org









\* Non-LADBS employees assigned to Development Services Case Management but report to their respective department management.

\*\*Reporting to Inspection Bureau

\*\*\*Reporting to Permit and Engineering Bureau