



ORGANIZATIONAL CHART & TELEPHONE DIRECTORY

This directory is designed to:

1. Give users direct access to the Department's top-level management and supervisory personnel, and
2. To see where the managers and supervisors fit into the Department's chain-of-command structure.

FOR AUTOMATED INSPECTION REQUESTS ONLY,
YOU MAY CALL TOLL FREE FROM ANYWHERE
IN LOS ANGELES COUNTY:

1-888-LA-4-BUILD

OR

OUTSIDE LOS ANGELES COUNTY

213-482-0000

TDD Line 888-833-8389

FOR ALL OTHER SERVICES OR INFORMATION WITHIN
THE CITY OF LOS ANGELES

3-1-1

OR

OUTSIDE LOS ANGELES CITY








1-213-473-3231

For more information regarding the Los Angeles Department of Building and Safety, please visit www.ladbs.org.



LADBS ADMINISTRATIVE/HEADQUARTER OFFICES
201 NORTH FIGUEROA STREET, SUITE 1000
LOS ANGELES, CALIFORNIA 90012

PERMIT/DEVELOPMENT SERVICES OFFICES

-  **DEVELOPMENT SERVICES CASE MANAGEMENT OFFICE**
 201 N. Figueroa Street, Suite 1030
 Los Angeles, CA 90012
-  **METRO DEVELOPMENT SERVICES CENTER**
 201 N. Figueroa Street, 4th Floor Los Angeles, CA 90012
 Permit and Engineering Bureau Administration – 10th Floor
 Records Research and Express Permits – 1st Floor
 Plan Check – 4th Floor (Electrical and Mechanical)
 Electrical and Mechanical Engineering – 5th Floor
 Green Buildings – 5th Floor
 Disabled Access Appeals – 8th Floor
 Structural Engineering Research – 8th Floor
 Boards of Building and Safety Commissioners – 10th Floor
 Engineering Plan Check – 10th Floor
-  **VAN NUYS DEVELOPMENT SERVICES CENTER**
 6262 Van Nuys Boulevard, 2nd Floor, Room 251
 Van Nuys, CA 91401
-  **WEST LOS ANGELES DEVELOPMENT SERVICES CENTER**
 1828 Sawtelle Boulevard, 2nd Floor
 Los Angeles, CA 90025
-  **SAN PEDRO DEVELOPMENT SERVICES CENTER**
 638 S. Beacon Street, 2nd Floor, San Pedro, CA 90731
-  **SOUTH LOS ANGELES DEVELOPMENT SERVICES CENTER**
 8475 S. Vermont Avenue, 2nd Floor
 Los Angeles, CA 90044
-  **TEST LAB**
 Electrical Testing Lab
 201 N. Figueroa Street, Suite 500, Los Angeles, CA 90012

 Mechanical Testing Lab
 201 N. Figueroa Street, Suite 500, Los Angeles, CA 90012

INSPECTION OFFICES

-  **INSPECTION BUREAU**
 221 N. Figueroa Street, 7th, 8th and 12th Floors
 Los Angeles, CA 90012
 Bureau Management – 8th Floor

 Commercial Inspection, Building Insp. Division - 7th Floor
 (Electrical, HVAC, Plumbing, Fire Sprinkler & Mechanical)
 Materials Control – 7th Floor
 Special Events – 7th Floor
 Investigations/Earthquake Safety/Hi-Rise Retrofit – 7th Floor
 Certified Licensing Contractor – 7th Floor
 Trade Licensing – 7th Floor
 Residential Inspection – 8th Floor
 Elevator and Pressure Vessels – 8th Floor
 Inspection Case Management – 8th Floor
 Restaurant and Hospitality Express Program – 8th Floor
 Inspections and Investigations – 8th Floor
 Training and Emergency Management Division – 8th Floor
 Grading and Engineering Inspection – 12th Floor
-  **VAN NUYS INSPECTION DIVISION**
 6262 Van Nuys Boulevard, Ste. 200
 Van Nuys, CA 91401

 19040 Vanowen Street
 Reseda, CA 91335
 Residential Inspection
-  **WEST LOS ANGELES INSPECTION DIVISION**
 11620 Wilshire Boulevard, Suite 1100
 Los Angeles, CA 90025
-  **SAN PEDRO COMMERCIAL & RESIDENTIAL INSPECTION DIVISIONS**
 638 S. Beacon Street, 2nd Floor
 San Pedro, CA 90731

CODE ENFORCEMENT OFFICES

-  **CODE ENFORCEMENT BUREAU**
 221 N. Figueroa Street, 11th and 12th Floors
 Los Angeles, CA 90012

CENTRAL REGION
 Centralized Specialty Division – 11th Floor
 CEIS Development Team – 9th Floor
 Administration and Liens – 11th Floor
 Pro Active Code Enforcement – 11th Floor
 Vacant Building Abatement – 11th Floor
 Signs-Enforcement & New – 11th Floor
 Off-Site Signs Program – 11th Floor
 General Code Enforcement – 11th Floor
 Annual Inspection Monitoring – 11th Floor
 Local Enforcement Agency – 12th Floor

 2130 E. 1st Street – 4th Floor, Suite 2101
 Los Angeles, CA 90033
-  **NORTH REGION**
 Van Nuys City Hall
 14410 Sylvan Street, Suite 10
 Los Angeles, CA 91401
-  **SOUTH REGION**
 8475 S. Vermont Avenue, Suite 200
 Los Angeles, CA 90044

 4301 S. Central Avenue
 Los Angeles, CA 90011

 7166 Manchester Avenue, Suite 10A
 Los Angeles, CA 90045

 638 Beacon Street, Suite 276
 San Pedro, CA 90701

TELEPHONE DIRECTORY INDEX

DEPARTMENT OF BUILDING AND SAFETY

Executive and Bureau Management Chart 1

PERMIT AND ENGINEERING BUREAU

Structural Plan Check Division
Metro Plan Check Chart 2
South LA District Office Chart 2
Van Nuys District Office Chart 3
West LA District Office Chart 3
San Pedro District Office Chart 3
Green/Electrical/Mechanical (GEM) Plan Check Division Chart 4
Green Building Plan Check / Inspection
Mechanical Plan Check and Test Lab
Electrical Plan Check and Test Lab
Soft Story Retrofit Program Chart 4

INSPECTION BUREAU

Commercial Inspection Chart 5
Plumbing, Heating and Fire Sprinkler / Electrical
Residential Inspection Chart 6
Metro / Van Nuys / West LA / San Pedro
Commercial Building Inspection Chart 6
Grading Engineering and Inspection Chart 7
Training and Emergency Management Division Chart 7
Elevator and Pressure Vessel Chart 7

CODE ENFORCEMENT BUREAU

Citywide Signs Code Enforcement Chart 8
General Enforcement and Annual Inspection Monitoring Chart 8
Citywide Pro-Active Code Enforcement Chart 8
Citywide Vacant Building Abatement and Foreclosure Registry Program Chart 8
Environmental Affairs Division, Local Enforcement Agency Chart 9

RESOURCE MANAGEMENT BUREAU

Administrative Services Division Chart 10
Financial Services Division Chart 10
Personnel Services Division Chart 10
Risk and Records Management Division Chart 10

TECHNOLOGY SERVICES BUREAU

Project Management Division Chart 11
Application Services Division Chart 11
Operations and Infrastructure Division Chart 11
BuildLA Office Chart 11

DEVELOPMENT SERVICES CASE MANAGEMENT

Subdivision Unit Chart 12
Case Management Chart 12
Case Management
Preliminary Review
Concierge Services
LAX Chart 12

DEPARTMENT OF BUILDING AND SAFETY

Chart 1

FRANK M. BUSH
GENERAL MANAGER
(213) 482-6800
frank.bush@lacity.org

**DEVELOPMENT SERVICES/
CASE MANAGEMENT**
ARA SARGSYAN, Chief
(213) 482-6864
ara.sargsyan@lacity.org
(See Chart 12)

EXECUTIVE OFFICER
OSAMA YOUNAN
(213) 482-6800
osama.younan@lacity.org

MANAGEMENT ASSISTANCE
ALDO UBAU
Bldg Civil Engr I
(213) 202-3427
aldo.ubau@lacity.org

PERMIT AND ENGINEERING BUREAU
IFA KASHEFI, Chief
(213) 482-0440
ifa.kashefi@lacity.org
(See Charts 2, 3 & 4)

RESOURCE MANAGEMENT BUREAU
STEVE ONGELE, Chief
(213) 482-6703
steve.ongele@lacity.org
(See Chart 10)

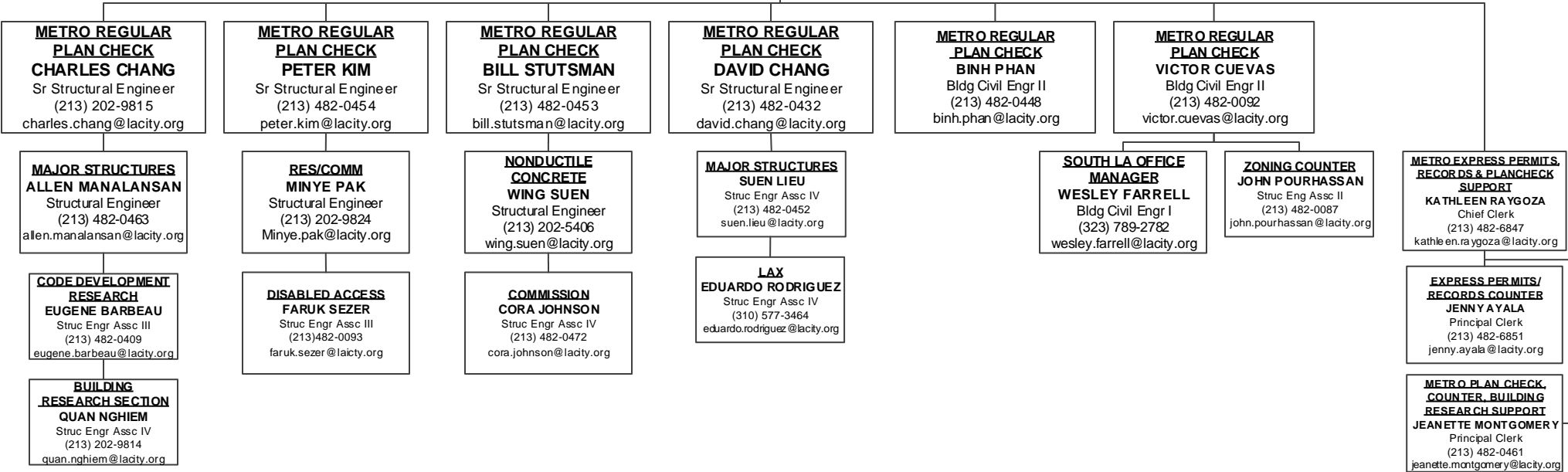
INSPECTION BUREAU
PASCAL CHALLITA, Chief
(213) 482-6712
pascal.challita@lacity.org
(See Charts 5, 6 & 7)

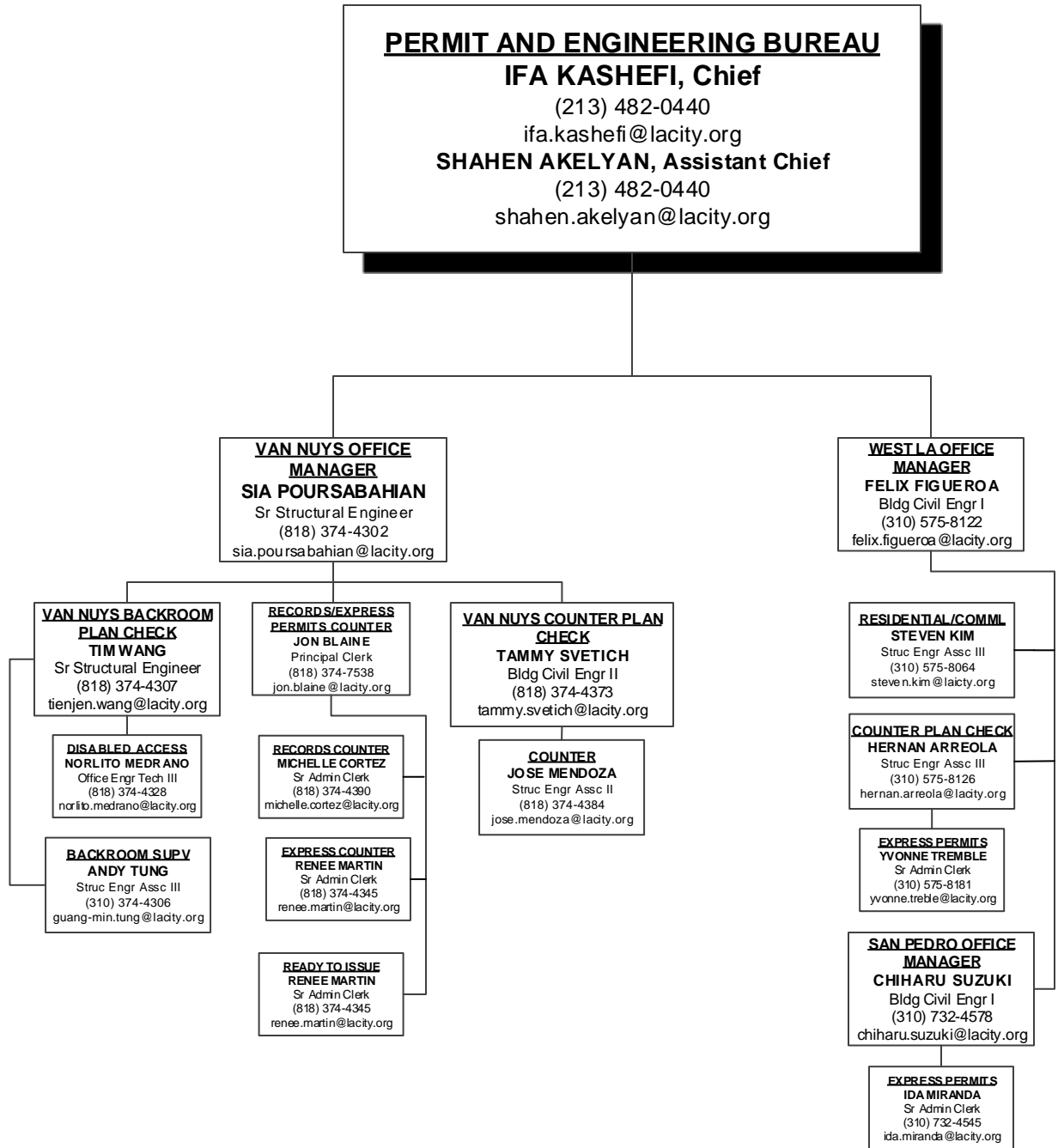
CODE ENFORCEMENT BUREAU
JOHN BIEZINS, Chief
(213) 252-3902
john.biezins@lacity.org
(See Charts 8 & 9)

TECHNOLOGY SERVICES BUREAU
GIOVANI DACUMOS, Chief
(213) 482-0001
giovani.dacumos@lacity.org
(See Chart 11)

PERMIT AND ENGINEERING BUREAU
IFA KASHEFI, Chief
 (213) 482-0440
 ifa.kashefi@lacity.org
SHAHEN AKELYAN, Assistant Chief
 (213) 482-0440
 shahen.akelyan@lacity.org

**METRO STRUCTURAL
 PLAN CHECK**
SHAHEN AKELYAN, Chief
 Asst Dep Supt of Bldg II
 (213) 482-0440
 shahen.akelyan@lacity.org





PERMIT AND ENGINEERING BUREAU

IFA KASHEFI, Chief

(213) 482-0440

ifa.kashefi@lacity.org

SHAHEN AKELYAN, Assistant Chief

(213) 482-0440

shahen.akelyan@lacity.org

**GREEN/ELECTRICAL/MECHANICAL
PLAN CHECK**

VACANT

Asst Dep Supt Bldg II
@lacity.org

GREEN BUILDING

SYED ALI
Bldg Civil Engr II
(213) 202-3450
syed.ali@lacity.org

MECHANICAL PLAN CHECK

DOMENICO BARBATO
Bldg Mech Engr II
(213) 482-0410
domenico.barbato@lacity.org

ELECTRICAL PLAN CHECK

BEHZAD EGHTE SADY
Bldg Elec Engr II
(213) 482-7309
behzad.eghtesady@lacity.org

GREEN BLDG PLAN CHECK

SEAN DANG
Bldg Civil Engr I
(213) 482-0448
aldo.ubau@lacity.org

VN & WLA INSPECTION

DAVE MATSON
Sr Bldg Mech Insp
(818) 374-9989
dave.matson@lacity.org

**METRO MECHANICAL
PLAN CHECK BACKROOM**

ADEL SALAH-EDDINE
Bldg Mech Engr II
(213) 482-0053
adel.salah-eddine@lacity.org

**VAN NUYS MECHANICAL
PLAN CHECK & COUNTER**

ADEL SALAH-EDDINE
Bldg Mech Engr I
(213) 482-0053
adel.salah-eddine@lacity.org

**METRO ELECTRICAL
PLAN CHECK BACKROOM**

NABIL MAALOUF
Bldg Elec Engr I
(213) 482-0052
nabil.maalouf@lacity.org

**VAN NUYS ELECTRICAL
PLAN CHECK & COUNTER**

ELIE MAALOUF
Bldg Elec Engr I
(818) 374-4343
elie.maalouf@lacity.org

**SOFT-STORY RETROFIT
PROGRAM**

CATHERINE NUEZCA GABA
Bldg Civil Engr II
(213) 482-0435
catherine.nuezcagaba@lacity.org

METRO

SEAN DANG
Bldg Civil Engr I
(213) 482-0448
aldo.ubau@lacity.org

WEST LA

BRYAN MEYER
Bldg Mech Insp
(310) 575-8029
bryan.meyer@lacity.org

**METRO MECHANICAL
PLAN CHECK COUNTER**

MIKE SHAHRESTANI
Mech Eng Assc IV
(213) 482-6940
mike.shahrestani@lacity.org

ELECTRICAL TEST LAB

BEHROOZ HOORIANI
Elec Eng Assc IV
(213) 482-0045
behrooz.hooriani@lacity.org

SOFT-STORY INSPECTION

VACANT
Sr Build Inspector
(213) 482-7638
@lacity.org

VAN NUYS

MICHAEL SCOTT AYERS
Struc Engr Assc III
(818) 374-4308
michaelscott.ayers@lacity.org

METRO INSPECTION

DONALD CRICLOW
Bldg Mech Insp
(213) 202-3410
donald.crichlow@lacity.org

MECHANICAL TEST LAB

MANUEL HERNANDEZ
Mech Eng Assc II
(213) 482-0458
manuel.hernandez@lacity.org

**METRO ELECTRICAL
PLAN CHECK COUNTER**

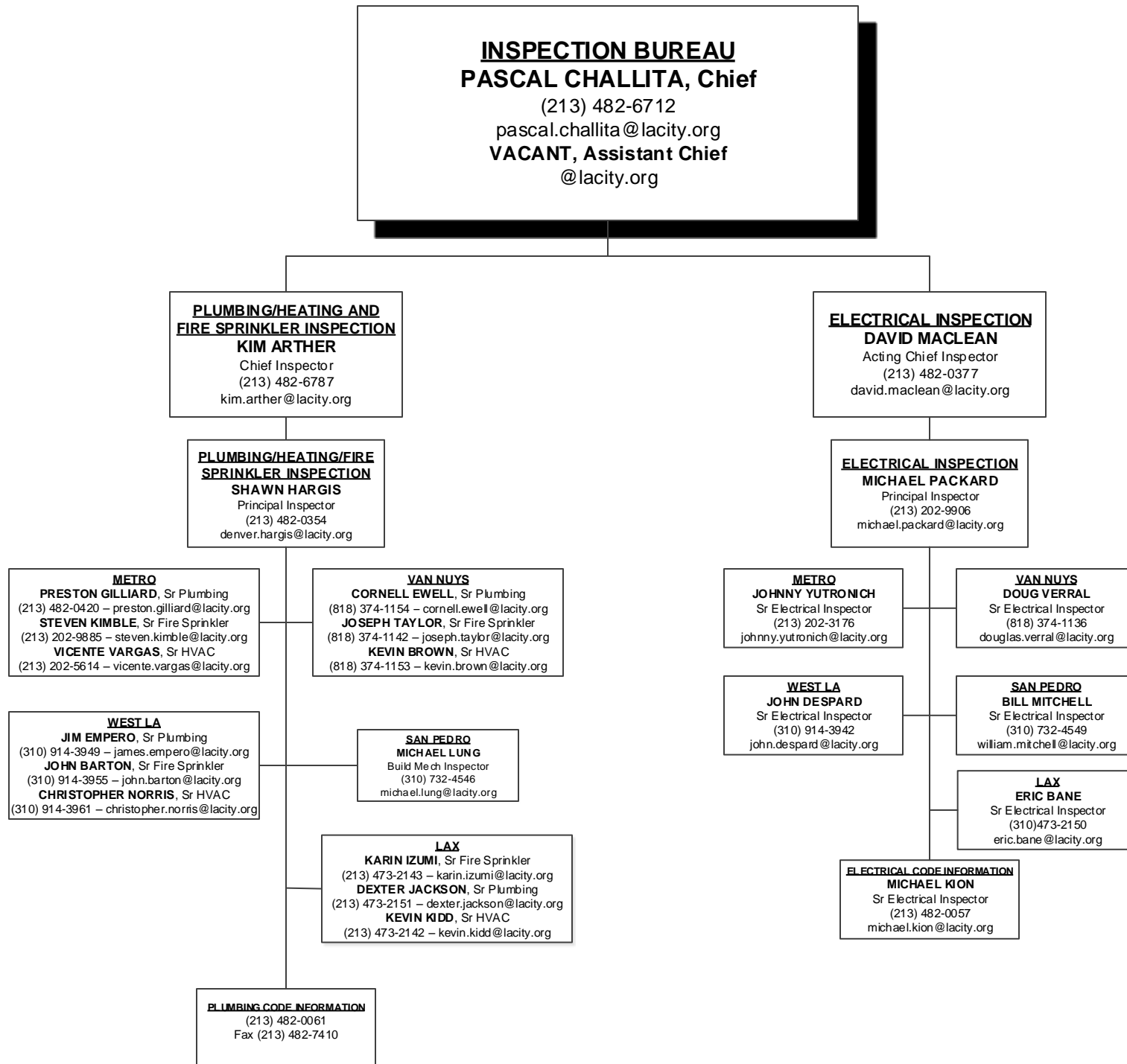
ANTHONY FERNANDEZ
Elec Eng Assc II
(213) 482-6886
anthony.fernandez@lacity.org

SOFT-STORY PLAN CHECK

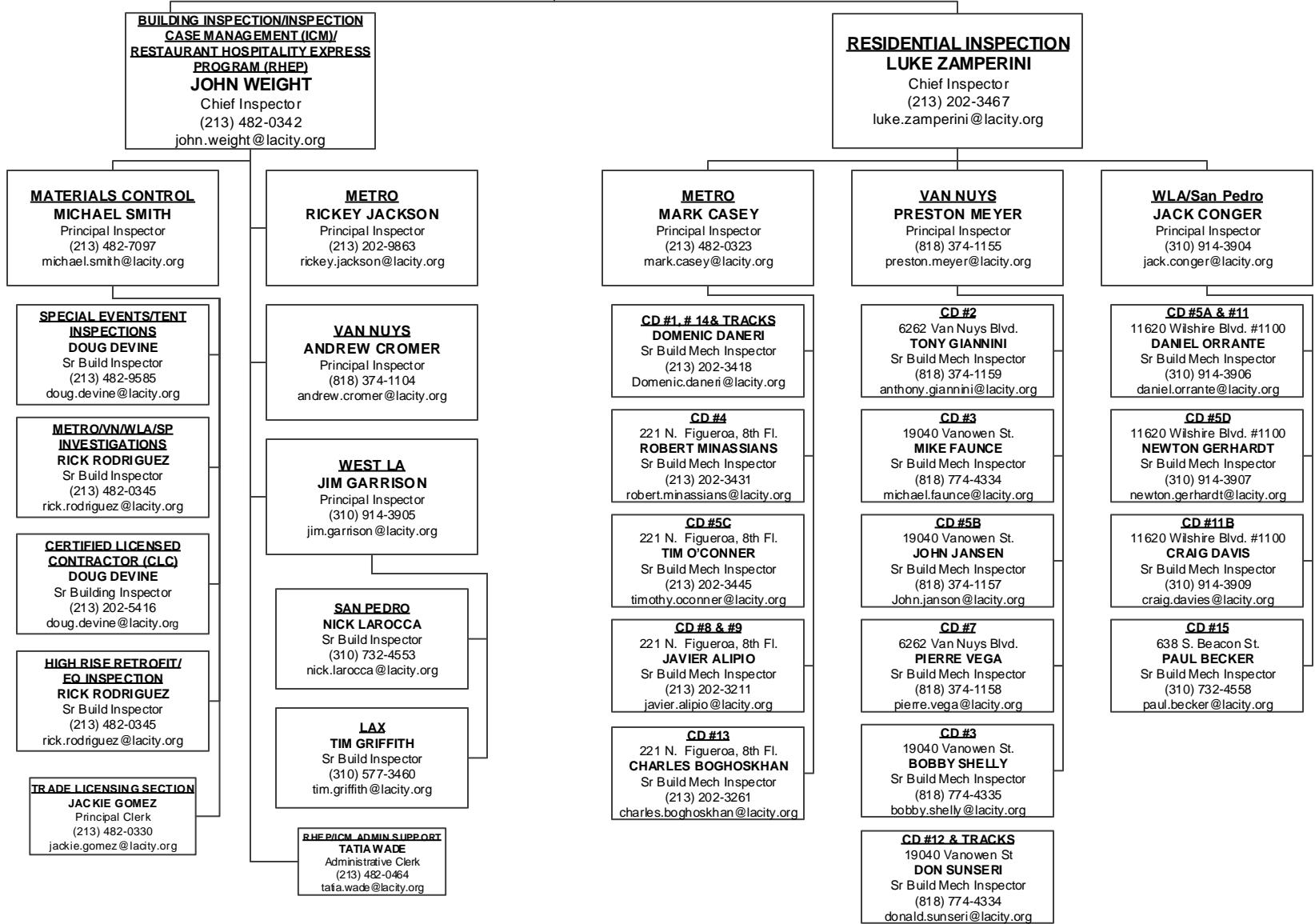
CELESTE NGUYEN
Struc Engr Assc II
(213) 482-0425
celeste.nguyen@lacity.org

WEST LA

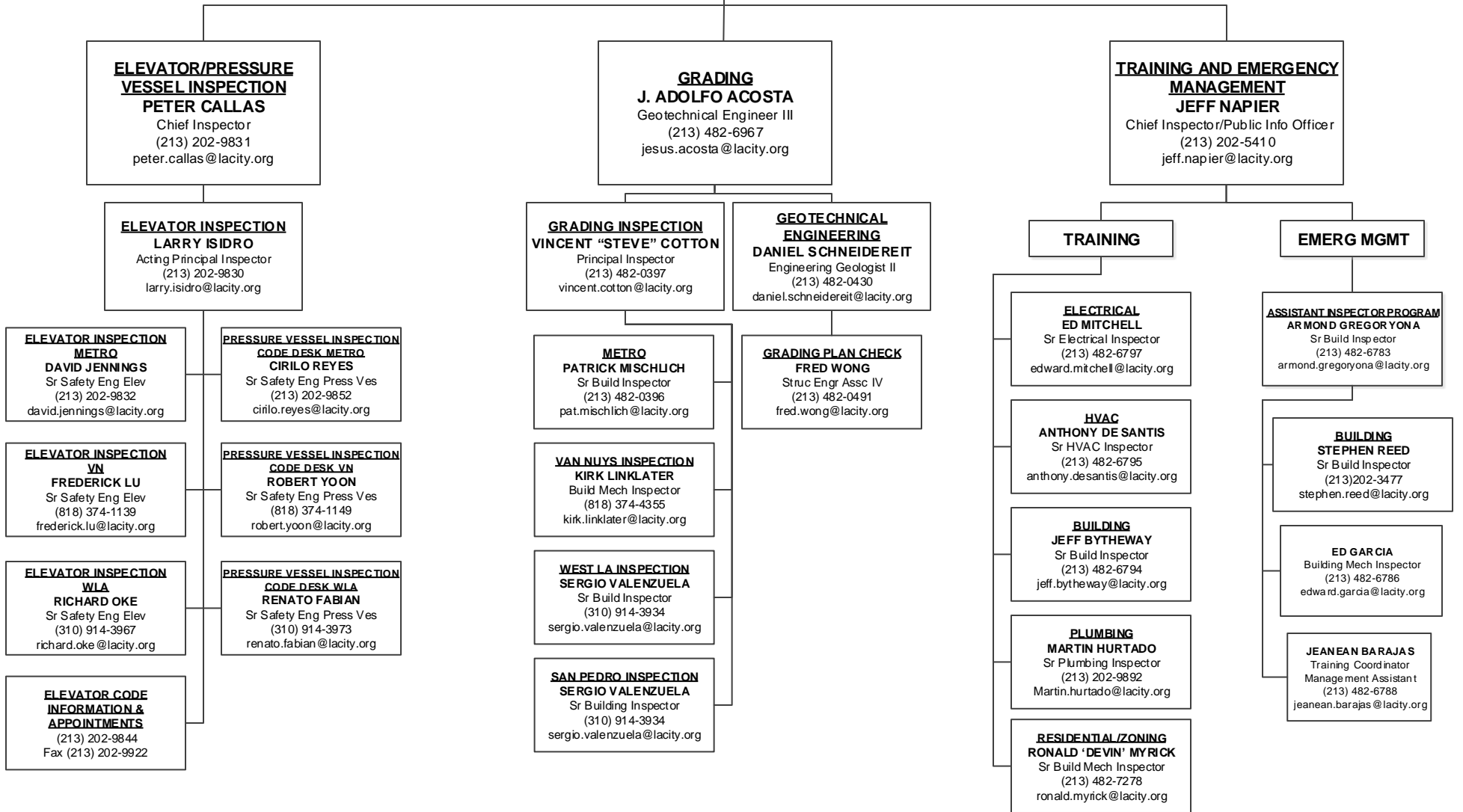
RICHARD GARCIA
Struc Engr Assc II
(310) 575-8095
richard.garcia@lacity.org



INSPECTION BUREAU
PASCAL CHALLITA, Chief
 (213) 482-6712
 pascal.challita@lacity.org
VACANT, Assistant Chief
 @lacity.org



INSPECTION BUREAU
PASCAL CHALLITA, Chief
 (213) 482-6712
 pascal.challita@lacity.org
VACANT, Assistant Chief
 @lacity.org



CODE ENFORCEMENT BUREAU

JOHN BIEZINS, Chief

(213) 252-3902

john.biezins@lacity.org

FRANK LARA, Assistant Chief

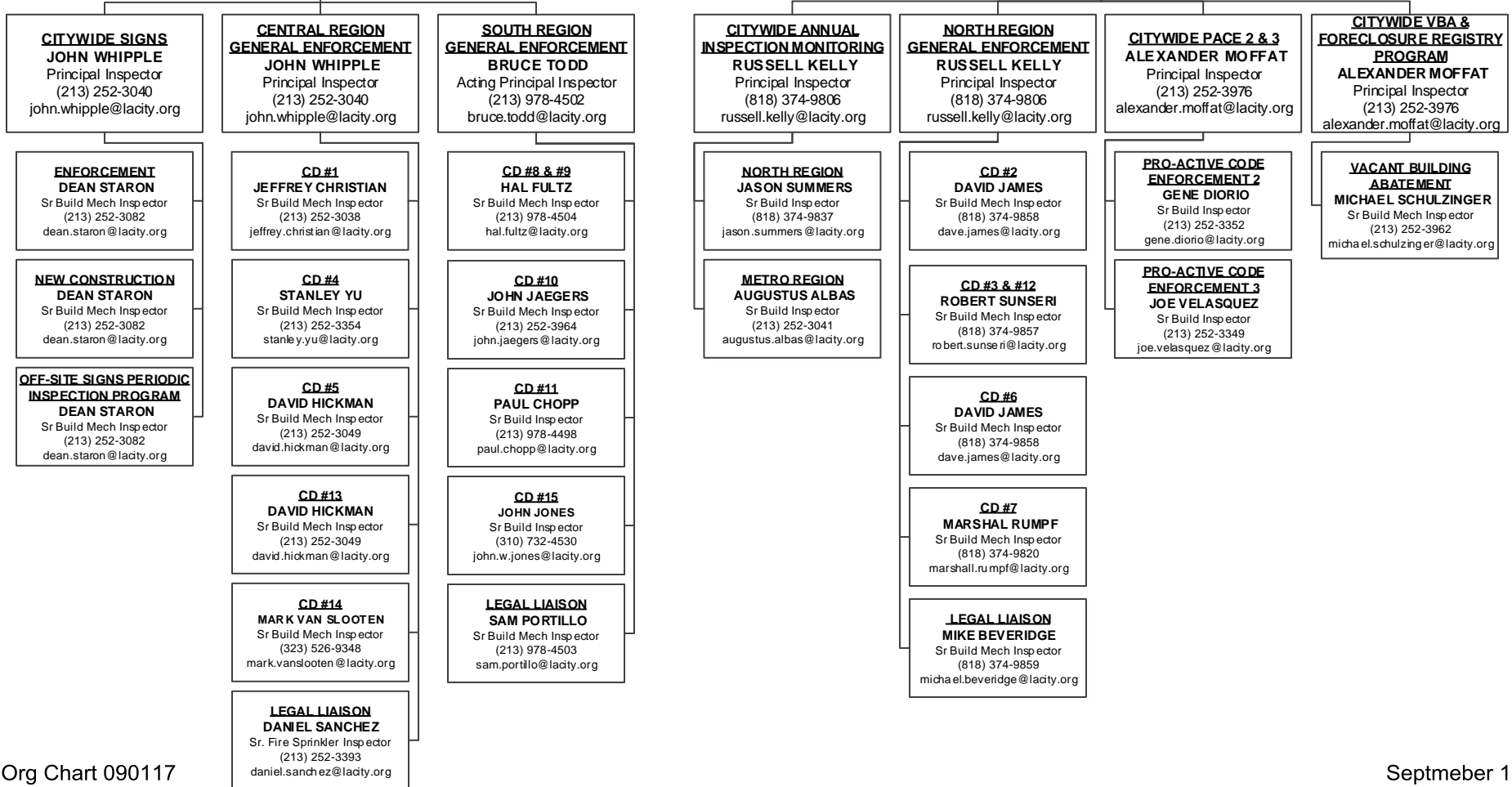
(213) 252-3310

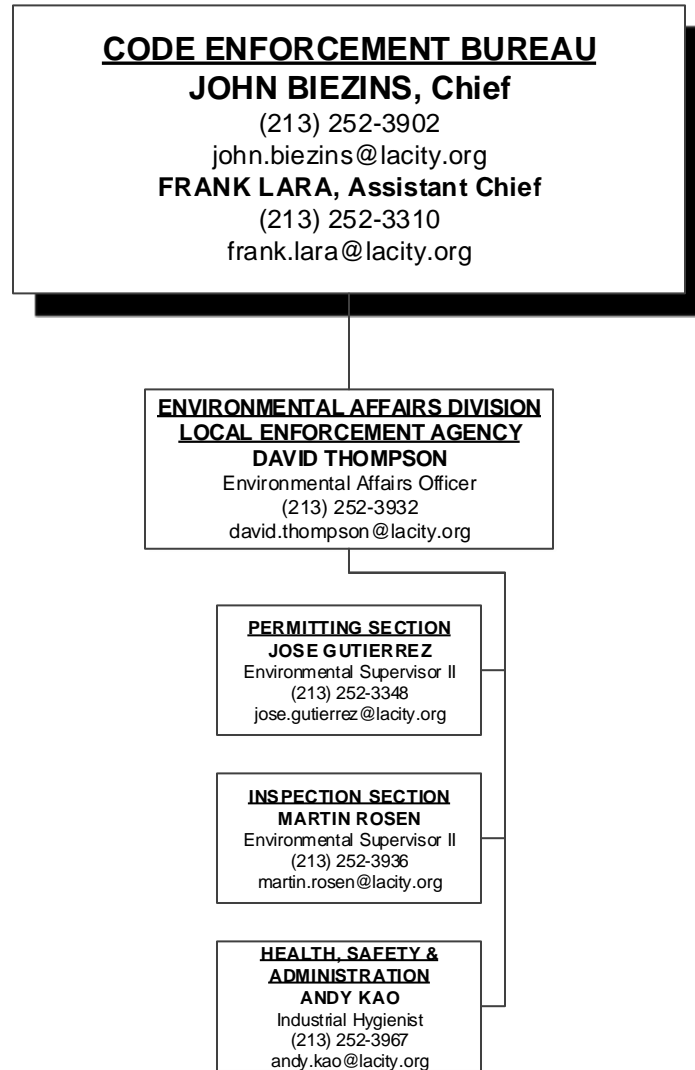
frank.lara@lacity.org

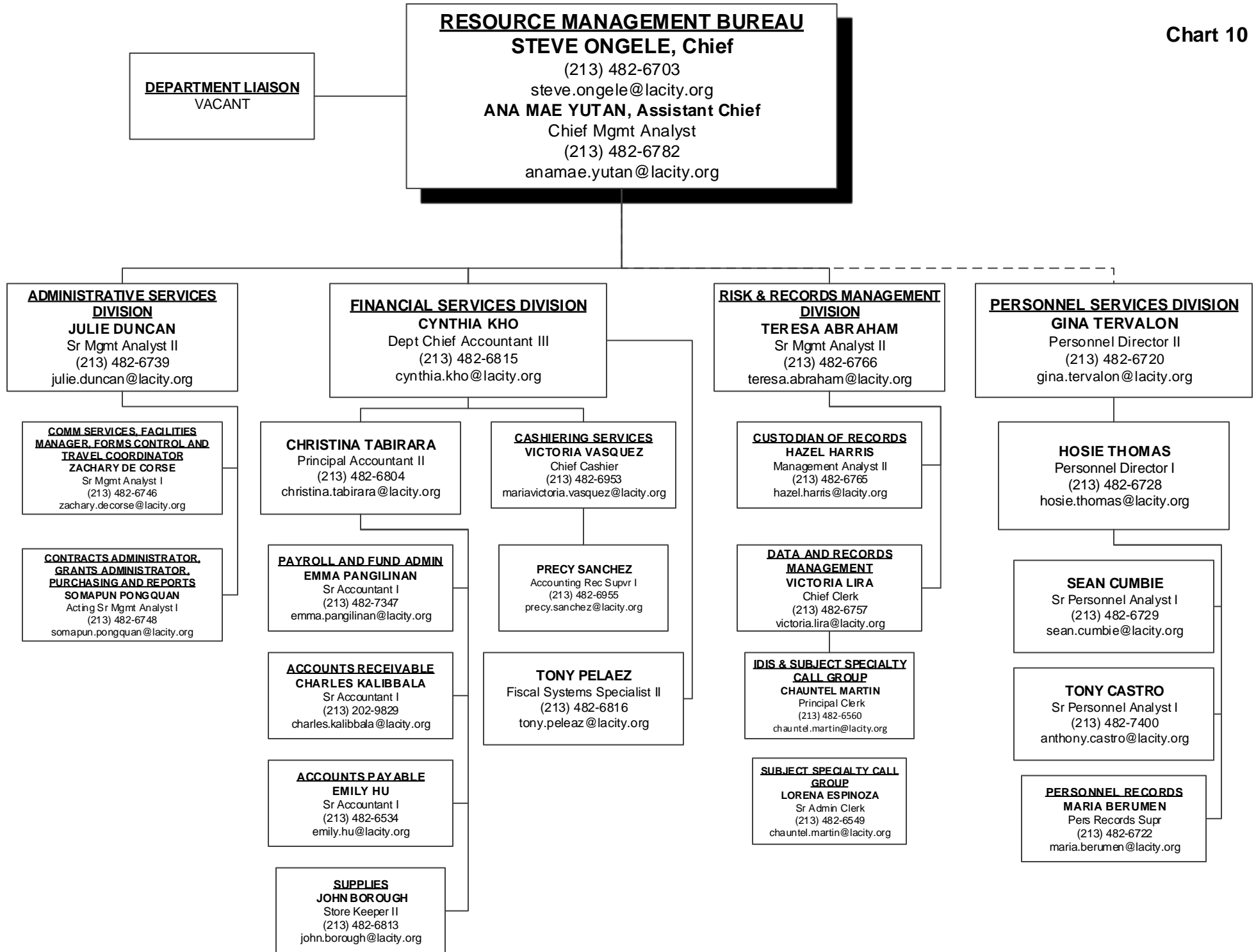
FAITH MAULUPE
Principal Clerk
(213) 252-3376
faith.maulupe@lacity.org

GENERAL ENFORCEMENT & SPECIALTY/SIGNS INSPECTION
ANDREW LONGORIA
Chief Inspector
(213) 252-3931
andrew.longoria@lacity.org

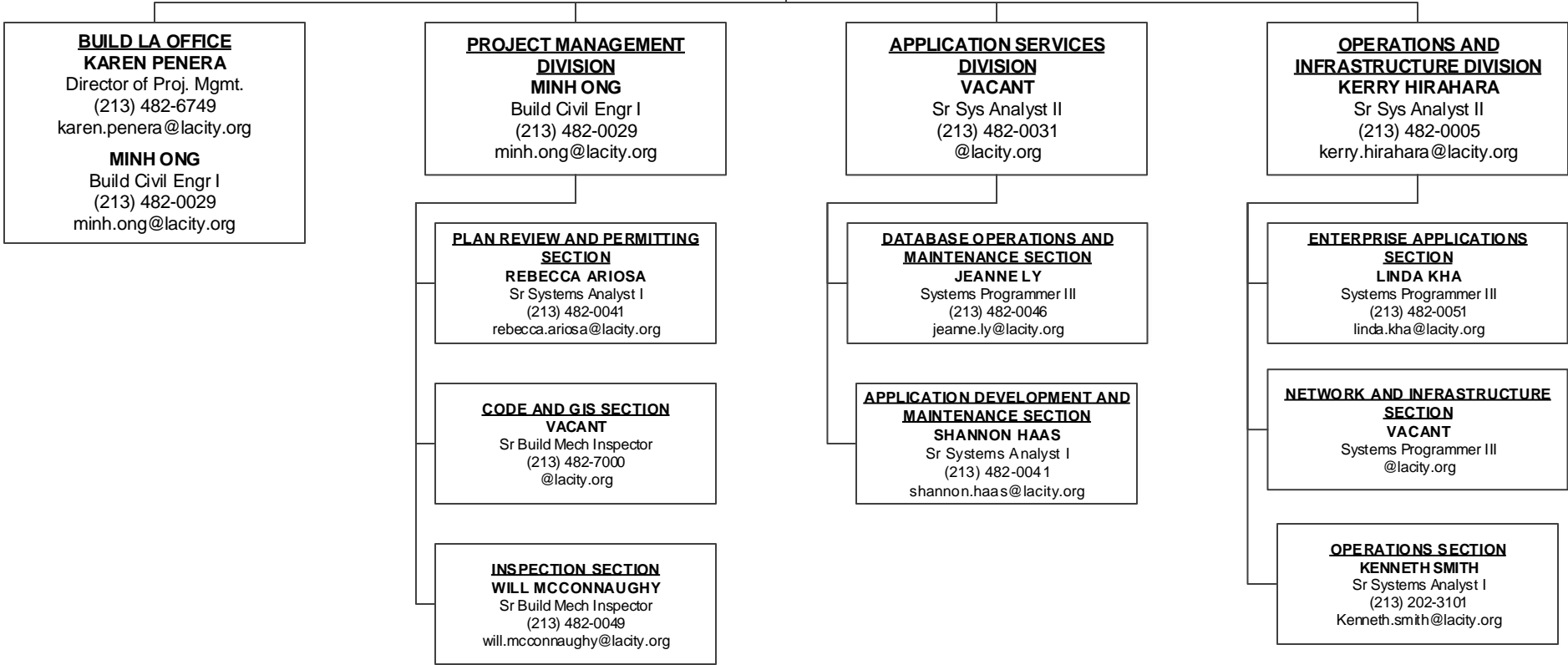
GENERAL ENFORCEMENT, ANNUAL INSPECTION MONITORING, PROACTIVE CODE ENFORCEMENT, & VACANT BUILDING ABATEMENT
ERIC JAKEMAN
Chief Inspector
(213) 252-3909
eric.jakeman@lacity.org







TECHNOLOGY SERVICES BUREAU
GIOVANI DACUMOS, Chief
 (213) 482-0001
 giovani.dacumos@lacity.org
JING REYES, Director of Systems
 (213) 482-0031
 jing.reyes@lacity.org



DEVELOPMENT SERVICES

CASE MANAGEMENT

ARA SARGSYAN, Chief
 (213) 482-6864
 ara.sargsyan@lacity.org
JAMESON LEE, Assistant Chief
 (213) 482-6866
 jameson.lee@lacity.org

CLERICAL SUPPORT

SARAH PULIDO
 Administrative Clerk
 (213) 482-6864
 sarah.pulido@lacity.org

SUBDIVISION UNIT

LAURA DUONG, Struc Engr Assc IV
 (213) 482-6864 - laura.duong@lacity.org
ERIC WONG, Struc Engr Assc II
 (213) 482-6876 - eric.wong@lacity.org

CASE MANAGEMENT
CHARMIE HUYNH

Bldg Civil Eng I
 (213) 482-6875
 charmie.huynh@lacity.org

LAX
LILY TENG

Bldg Civil Eng I
 (213) 482-6871
 lily.teng@lacity.org

PRELIMINARY REVIEW
VN/WEST LA

RUDOLF K. MELIKOFF, Struc Engr Assc III
 (818) 374-4332 - rudolf.kinar-melikoff@lacity.org
MOURAD AZIZ, Struc Engr Assc III
 (818) 374-9979 - mourad.aziz@lacity.org

PRELIMINARY REVIEW METRO

GARO TELMI
 Struc Engr Assc III
 (213) 482-0416
 garo.telmi@lacity.org

LAFD CASE MANAGERS METRO*

DOMINIQUE MEDINA, Fire Prot Engr Assc II
 (213) 482-6930 - dominique.medina@lacity.org
ANDREW KO, Fire Prot Engr Assc IV
 (213) 482-6907 - andrew.ko@lacity.org

LAFD CASE MANAGER VAN NUYS*

OSCAR SALGADO, Fire Prot Engr Assc I
 (818) 374-4352 - oscar.salgado.jr@lacity.org

DCP CASE MANAGER*

KIT AWAKUNI
 City Planner
 (213) 482-0441
 kit.awakuni@lacity.org

DOT CASE MANAGER*

TAIMOUR TANAVOLI
 Transp Engr Assc III
 (213) 482-7024
 taimour.tanavoli@lacity.org

CASE MANAGERS

CHAD DOI, Struc Engr Assc IV
 (213) 482-6877 - chad.doi@lacity.org
JOHN FRANCIA, Struc Engr Assc IV
 (213) 482-0010 - john.franacia@lacity.org
LAWRENCE QUIRANTE, Struc Engr Assc III
 (213) 482-0444 - lawrence.quirante@lacity.org
RODOLFO ARIAS, Struc Engr Assc II
 (213) 482-6865 - rodolfo.arias@lacity.org
ALBERT SERVIN, Struc Engr Assc II
 (213) 332-9480 - albert.servin@lacity.org
JOE VO, Struc Engr Assc II
 (213) 482-6870 - joed.vo@lacity.org

CONCIERGE SERVICES METRO

VERONICA LOPEZ, Struc Engr Assc II
 (213) 482-7429 - veronica.lopez@lacity.org
TSE MING HUANG, Struc Engr Assc II
 (213) 482-7432 - tse-ming.huang@lacity.org
TEO DIAZ RODRIGUEZ, Struc Engr Assc II
 (213) 482-0703 - teo.diaz@lacity.org

CONCIERGE SERVICES VAN NUYS

MOURAD AZIZ, Struc Engr Assc III
 (818) 374-9979 - mourad.aziz@lacity.org
RUDOLF K. MELIKOFF, Struc Engr Assc III
 (818) 374-4332 - rudolf.kinar-melikoff@lacity.org

BOE CASE MANAGER*

CARL MILLS
 Civil Engineer
 (213) 482-6701
 carl.mills@lacity.org

DWP CASE MANAGER*

SHIRIN FRIEDLANDER
 Electrical Engineer
 (213) 367-2942
 shirin.friedlander@ladwp.org

MARK WANG, Mech Eng Assc IV
 (213) 482-0439 - mark.wang@lacity.org
MEHDI ZANDI, Elec Eng Assc IV
 (213) 482-6871 - mehdi.zandi@lacity.org
EDUARDO RODRIGUEZ, Struc Eng Assc IV
 (310) 577-3464 - eduardo.rodriguez@lacity.org
MARJAN SHENASI, Struc Engr Assc III
 (310) 575-8091 - marjan.shenasi@lacity.org

Inspection Coordination
Coordinators**

TIM GRIFFITH, Sr Build Inspector
 (213) 482-3460 - tim.griffith@lacity.org
LISA YANCEY, Sr Build Inspector
 (213) 202-9846 - lisa.yancey@lacity.org
ERIC BANE, Sr Electrical Inspector
 (310) 577-3463 - eric.bane@lacity.org
KEVIN KIDD, Sr HVAC Inspector
 (310) 577-3458 - kevin.kidd@lacity.org
JIM DIMIT, Sr Plumbing Inspector
 (213) 577-3455 - james.dimit@lacity.org
KARIN IZUMI, Sr Sprinkler Inspector
 (213) 482-0331 - karin.izumi@lacity.org
VACANT, Sr Build Inspector

* Non-LADBS employees assigned to Development Services Case Management but report to their respective department management.

**Reporting to Inspection Bureau