



ORGANIZATIONAL CHART & TELEPHONE DIRECTORY

This directory is designed to:

1. Give users direct access to the Department's top-level management and supervisory personnel, and
2. To see where the managers and supervisors fit into the Department's chain-of-command structure.

FOR AUTOMATED INSPECTION REQUESTS ONLY,
YOU MAY CALL TOLL FREE FROM ANYWHERE
IN LOS ANGELES COUNTY:

1-888-LA-4-BUILD

OR

OUTSIDE LOS ANGELES COUNTY

213-482-0000

TDD Line 888-833-8389

FOR ALL OTHER SERVICES OR INFORMATION WITHIN
THE CITY OF LOS ANGELES

3-1-1

OR

OUTSIDE LOS ANGELES CITY

1-213-473-3231

For more information regarding the Los Angeles Department of Building and Safety, please visit www.ladbs.org.



LADBS ADMINISTRATIVE/HEADQUARTER OFFICES
 201 NORTH FIGUEROA STREET, SUITE 1000
 LOS ANGELES, CALIFORNIA 90012

PERMIT/DEVELOPMENT SERVICES OFFICES

- DEVELOPMENT SERVICES CASE MANAGEMENT OFFICE
 201 N. Figueroa Street, Suite 1030
 Los Angeles, CA 90012
- METRO DEVELOPMENT SERVICES CENTER
 201 N. Figueroa Street, 4th Floor Los Angeles, CA 90012
 Permit and Engineering Bureau Administration – 10th Floor
 Records Research and Express Permits – 1st Floor
 Plan Check – 4th Floor (Electrical and Mechanical)
 Electrical and Mechanical Engineering – 5th Floor
 Green Buildings – 5th Floor
 Disabled Access Appeals – 8th Floor
 Structural Engineering Research – 8th Floor
 Boards of Building and Safety Commissioners – 10th Floor
 Engineering Plan Check – 10th Floor
- VAN NUYS DEVELOPMENT SERVICES CENTER
 6262 Van Nuys Boulevard, 2nd Floor, Room 251
 Van Nuys, CA 91401
- WEST LOS ANGELES DEVELOPMENT SERVICES CENTER
 1828 Sawtelle Boulevard, 2nd Floor
 Los Angeles, CA 90025
- SAN PEDRO DEVELOPMENT SERVICES CENTER
 638 S. Beacon Street, 2nd Floor, San Pedro, CA 90731
- SOUTH LOS ANGELES DEVELOPMENT SERVICES CENTER
 8475 S. Vermont Avenue, 2nd Floor
 Los Angeles, CA 90044
- TEST LAB
 Electrical Testing Lab
 201 N. Figueroa Street, Suite 500, Los Angeles, CA 90012
- Mechanical Testing Lab
 201 N. Figueroa Street, Suite 500, Los Angeles, CA 90012

INSPECTION OFFICES

- INSPECTION BUREAU
 221 N. Figueroa Street, 7th, 8th and 12th Floors
 Los Angeles, CA 90012
 Bureau Management – 8th Floor
- Commercial Inspection, Building Insp. Division - 7th Floor
 (Electrical, HVAC, Plumbing, Fire Sprinkler & Mechanical)
 Materials Control – 7th Floor
 Special Events – 7th Floor
 Investigations/Earthquake Safety/Hi-Rise Retrofit – 7th Floor
 Certified Licensing Contractor – 7th Floor
 Trade Licensing – 7th Floor
 Residential Inspection – 8th Floor
 Elevator and Pressure Vessels – 8th Floor
 Inspection Case Management – 8th Floor
 Restaurant and Small Business Express Program (RSBEP)
 – 8th Floor
 Inspections and Investigations – 8th Floor
 Training and Emergency Management Division – 8th Floor
 Grading and Engineering Inspection – 12th Floor
- VAN NUYS INSPECTION DIVISION
 6262 Van Nuys Boulevard, Ste. 200
 Van Nuys, CA 91401
- 19040 Vanowen Street
 Reseda, CA 91335
 Residential Inspection
- WEST LOS ANGELES INSPECTION DIVISION
 11620 Wilshire Boulevard, Suite 1100
 Los Angeles, CA 90025
- SAN PEDRO COMMERCIAL & RESIDENTIAL
 INSPECTION DIVISIONS
 638 S. Beacon Street, 2nd Floor
 San Pedro, CA 90731

CODE ENFORCEMENT OFFICES

- CODE ENFORCEMENT BUREAU
 221 N. Figueroa Street, 11th and 12th Floors
 Los Angeles, CA 90012
- CENTRAL REGION
 Centralized Specialty Division – 11th Floor
 Administration and Liens – 11th Floor
 Pro Active Code Enforcement – 11th Floor
 Vacant Building Abatement – 11th Floor
 Signs-Enforcement & New – 11th Floor
 Off-Site Signs Program – 11th Floor
 General Code Enforcement – 11th Floor
 Annual Inspection Monitoring – 11th Floor
 Local Enforcement Agency – 12th Floor
- 2130 E. 1st Street – 4th Floor, Suite 2101
 Los Angeles, CA 90033
- CEIS Development Team
 201 N. Figueroa Street, 9th Floor
 Los Angeles, CA 90012
- NORTH REGION
 Van Nuys City Hall
 14410 Sylvan Street, Suite 105
 Los Angeles, CA 91401
- SOUTH REGION
 8475 S. Vermont Avenue, Suite 200
 Los Angeles, CA 90044
- 4301 S. Central Avenue
 Los Angeles, CA 90011
- 221 N Figueroa Street, 11th Floor
 Los Angeles, CA 90012
- 7166 Manchester Avenue, Suite 10A
 Los Angeles, CA 90045
- 638 Beacon Street, Suite 276
 San Pedro, CA 90731

TELEPHONE DIRECTORY INDEX

DEPARTMENT OF BUILDING AND SAFETY

Executive and Bureau Management	Chart 1
Government and Community Relations Management	Chart 2
Development Services Case Management	
Case Management	Chart 3
Preliminary Review	Chart 3
LAX	Chart 3
Personnel Services	Chart 4

PERMIT AND ENGINEERING BUREAU

Permit and Engineering Bureau Management	Chart 5
Structural Plan Check Division	
Metro Plan Check	Chart 6
Van Nuys District Office	Chart 6
West LA District Office	Chart 6
High-Rise and Seismic Retrofit Division	
Soft-Story Retrofit Program	Chart 7
High-Rise and Non-Ductile Concrete Buildings	Chart 7
Building Research	Chart 7
Structural Plan Check Counter Division	
Metro Plan Check	Chart 8
South LA District Office	Chart 8
Van Nuys District Office	Chart 8
West LA District Office	Chart 8
San Pedro District Office	Chart 8
Concierge Services	Chart 8
Green/Electrical/Mechanical (GEM) Plan Check Division	
Green Building Plan Check / Inspection	Chart 9
Mechanical Plan Check and Test Lab	Chart 9
Electrical Plan Check and Test Lab	Chart 9

INSPECTION BUREAU

Commercial Building Inspection	Chart 10
Elevator and Pressure Vessel	Chart 10
Commercial Inspection	Chart 11
Plumbing, Heating and Fire Sprinkler / Electrical	
Residential Inspection	Chart 12
Metro / Van Nuys / West LA / San Pedro	
Grading Engineering and Inspection	Chart 12
Training and Emergency Management Division	Chart 12

CODE ENFORCEMENT BUREAU

Citywide Signs Code Enforcement	Chart 13
General Enforcement and Annual Inspection Monitoring	Chart 13
Citywide Pro-Active Code Enforcement	Chart 13
Citywide Vacant Building Abatement and Foreclosure Registry Program	Chart 13
Environmental Affairs Division, Local Enforcement Agency	Chart 14

RESOURCE MANAGEMENT BUREAU

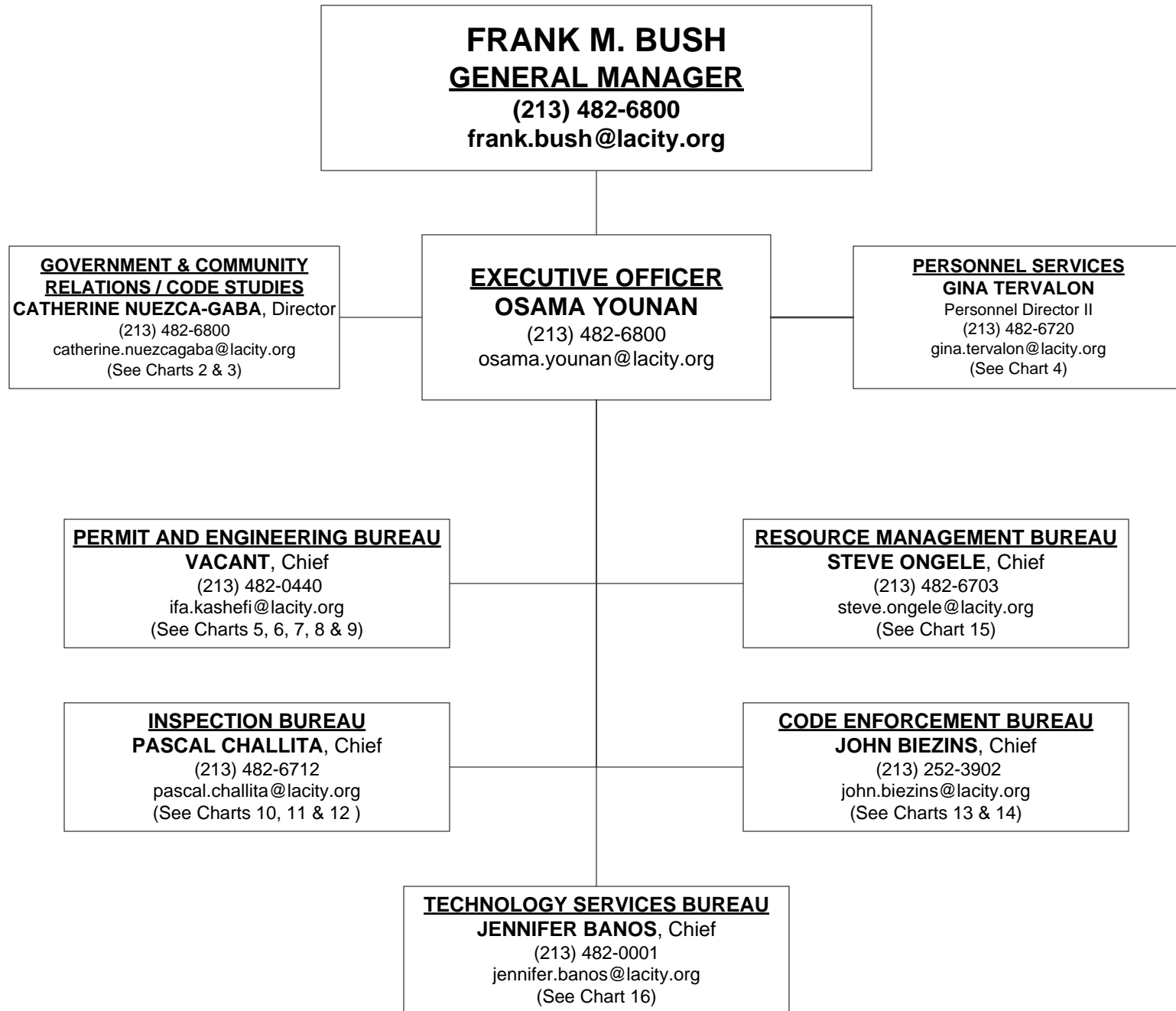
Administrative Services Division	Chart 15
Financial Services Division	Chart 15
Risk and Records Management Division	Chart 15

TECHNOLOGY SERVICES BUREAU

Project Management Division	Chart 16
Application Services Division	Chart 16
Operations and Infrastructure Division	Chart 16
BuildLA Office	Chart 16

DEPARTMENT OF BUILDING AND SAFETY

Chart 1



**GOVERNMENT & COMMUNITY
RELATIONS / CODE STUDIES**
CATHERINE NUEZCA-GABA, Director
Asst Dep Sup of Bldg II
(213) 482-6805
catherine.nuezcagaba@lacity.org

**SPECIAL ASSISTANCE TO
EXECUTIVE OFFICE**
ALDO UBAU
Bldg Civil Engr I
(213) 482-6520
aldo.ubau@lacity.org

CODE ENGINEER
EUGENE BARBEAU
Struc Engr Assc III
(213) 482-0409
eugene.barbeau@lacity.org

ZONING ENGINEER
PETER KIM
Sr Struc Engineer
(213) 482-6855
peter.kim@lacity.org

**DEVELOPMENT SERVICES
CASE MANAGEMENT**
CHARMIE HUYNH
Bldg Civil Engr II
(213) 482-6875
charmie.huynh@lacity.org

**BOARD OF BUILDING &
SAFETY COMMISSIONERS**
CORA JOHNSON
Board Secretary
Bldg Civil Engr I
(213) 482-0472
cora.johnson@lacity.org

BUILD LA
KAREN PENERA
Project Manager
(213) 482-6749
karen.penera@lacity.org

RICHARD SUPAN
Struc Engr Assc II
(213) 482-0096
ricardo.supan@lacity.org

**ZONING LETTERS &
OTHERS**
ERIC WONG
Struc Engr Assc II
(213) 482-6876
eric.wong@lacity.org

SUB-DIVISION
LAURA DUONG
Struc Engr Assc IV
(213) 482-0434
laura.duong@lacity.org

DINA ELKINAWY
Struc Engr Assc III
(213) 482-9586
dina.elkinawy@lacity.org

VERONICA LOPEZ
Struc Engr Assc II
(213) 482-7429
veronica.lopez@lacity.org

**GOVERNMENT & COMMUNITY
RELATIONS / CODE STUDIES**
CATHERINE NUEZCA-GABA, Director
 Asst Dep Sup of Bldg II
 (213) 482-6805
 catherine.nuezcagaba@lacity.org

DEVELOPMENT SERVICES
CASE MANAGEMENT
CHARMIE HUYNH
 Bldg Civil Engr II
 (213) 482-6875
 charmie.huynh@lacity.org

CASE MANAGEMENT
CHAD DOI
 Build Civil Engr I
 (213) 482-6877
 chad.doi@lacity.org

CLERICAL SUPPORT
SARAH PULIDO
 Administrative Clerk
 (213) 482-6864
 sarah.pulido@lacity.org

LAX
LILY TENG
 Build Civil Engr I
 (213) 473-2146
 lily.teng@lacity.org

CASE MANAGEMENT
JOHN FRANCIA
 Struc Engr Assc IV
 (213) 482-0010
 john.francia@lacity.org

PRELIMINARY REVIEW
METRO
GARO TELMI, Struc Engr Assc IV
 (213) 482-0416 – garo.telmi@lacity.org
SALVADOR QUINTANILLA (RESTAURANT
PRELIM), Struc Engr Assc II
 (213) 482-0471 – salvador.quintanilla@lacity.org
VAN NUYS/WEST LA
RUDOLF K. MELIKOFF, Struc Engr Assc III
 (818) 374-4332 – rudolf.kinar-melikoff@lacity.org

Permit and Engineering Coordinators***
EDUARDO RODRIGUEZ, Struc Eng Assc IV
 (213) 473-2147 – eduardo.rodriguez@lacity.org
MARK WANG, Mech Eng Assc IV
 (213) 473-2144 – mark.wang@lacity.org
MEHDI ZANDI, Elec Eng Assc IV
 (213) 473-2145 – mehdi.zandi@lacity.org

CASE MANAGERS
LAWRENCE QUIRANTE, Struc Engr Assc III
 (213) 482-0444 – lawrence.quirante@lacity.org
RODOLFO ARIAS, Struc Engr Assc III
 (213) 482-6865 – rodolfo.arias@lacity.org
ALBERT SERVIN, Struc Engr Assc II
 (213) 482-7339 – albert.servin@lacity.org
JOE VO, Struc Engr Assc II
 (213) 482-6870 – joed.vo@lacity.org

NON-LADBS CASE MANAGERS*

Inspection Coordinators**
TIM GRIFFITH, Sr Build Inspector
 (213) 473-2153 – tim.griffith@lacity.org
ALBERT COMISARI, Build Inspector
 (213) 473-2453 – albert.comisari@lacity.org
ERIC BANE, Sr Electrical Inspector
 (213) 473-2150 – eric.bane@lacity.org
CHRIS NORRIS, Sr HVAC Inspector
 (213) 473-2142 – christopher.norris@lacity.org
PRESTON GILLIARD, Sr Plumbing Inspector
 (213) 473-2151 – preston.gilliard@lacity.org
GUADALUPE TOLEDO, Fire Sprinkler Inspector
 (213) 473-2143 – guadalupe.toledo@lacity.org

DCP CASE MANAGERS
SARAH MOLINA-PEARSON, Sr City Planner
 (213) 482-0376 – sarah.molina-pearson@lacity.org
KIT AWAKUNI, City Planner
 (213) 482-0441 – kit.awakuni@lacity.org
SUSAN ZERMENO, City Planner
 (213) 482-7073 – susan.zermeno@lacity.org
JUSTON BILOW, City Planning Assc
 (213) 482-7083 – justin.bilow@lacity.org
BRIAN CARR, City Planning Assistant
 brian.r.carr@lacity.org

LAFD CASE MANAGERS METRO
DOMINIQUE MEDINA, Fire Prot Engr Assc II
 (213) 482-6930 – dominique.medina@lacity.org
ANDREW KO, Fire Prot Engr Assc IV
 (213) 482-6907 – andrew.ko@lacity.org
LAFD CASE MANAGER VAN NUYS
OSCAR SALGADO, Fire Prot Engr Assc I
 (818) 374-4352 – oscar.salgado.jr@lacity.org

DOT CASE MANAGER
TAIMOUR TANAVOLI, Trans Engr Assc III
 (213) 482-7024 - taimour.tanavoli@lacity.org

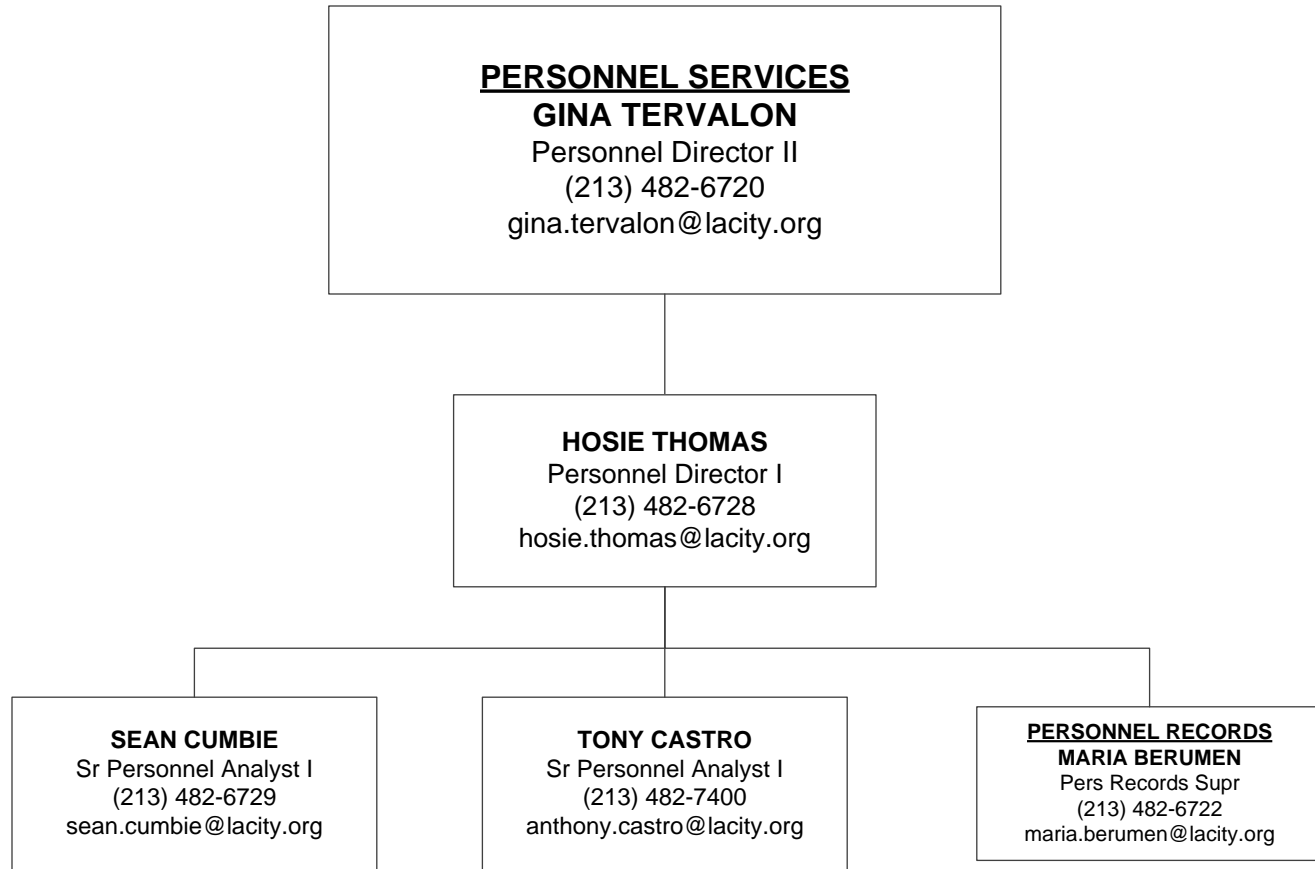
BOE CASE MANAGER
CARL MILLS, Civil Engineer
 (213) 482-6701 - carl.mills@lacity.org

DWP CASE MANAGER
SHIRIN FRIEDLANDER, Elect Engineer
 (213) 367-2942 - shirin.friedlander@ladwp.org

* Non-LADBS employees assigned to Development Services Case Management but report to their respective department management.

**Reporting to Inspection Bureau

***Reporting to Permit and Engineering Bureau



PERMIT AND ENGINEERING BUREAU
VACANT, Chief
(213) 482-0440
@lacity.org

STRUCTURAL PLAN CHECK DIVISION
VICTOR CUEVAS, Chief
Asst Dep Sup of Bldg II
(213) 482-0440
victor.cuevas@lacity.org
See Chart 6

HIGH-RISE AND SEISMIC RETROFIT DIVISION
SHAHEN AKELYAN, Chief
Asst Dep Sup of Bldg II
(213) 482-0440
shahen.akelyan@lacity.org
See Chart 7

STRUCTURAL PLAN CHECK COUNTER DIVISION
ARA SARGSYAN, Chief
Asst Dep Sup of Bldg II
(213) 482-0440
ara.sargsyan@lacity.org
See Chart 8

GREEN/ELECTRICAL/ MECHANICAL DIVISION
ADEL SALAH EDDINE, Chief
Asst Dep Sup of Bldg II
(213) 482-0053
adel.salah-eddine@lacity.org
See Chart 9

PERMIT AND ENGINEERING BUREAU
VACANT, Chief
(213) 482-0440
@lacity.org

STRUCTURAL PLAN CHECK DIVISION
VICTOR CUEVAS, Chief
Asst Dep Sup of Bldg II
(213) 482-0440
victor.cuevas@lacity.org

**METRO STRUCTURAL
PLAN CHECK**
SIA POURSAHAHIAN
Sr Structural Engineer
(213) 482-0454
sia.poursabahian@lacity.org

ARMEN JIVALAGIAN
Structural Engr Assc IV
(213) 482-7262
armen.jivalagian@lacity.org

KESETE HAREGOT
Struc Engr Assc III
(213) 978-4466
kesete.haregot@lacity.org

**METRO STRUCTURAL
PLAN CHECK**
BILL STUTSMAN
Sr Structural Engineer
(213) 482-0453
bill.stutsman@lacity.org

MINYE PAK
Structural Engineer
(213) 202-9824
minye.park@lacity.org

HERNAN ARREOLA
Struc Engr Assc III
(213) 978-4464
hernan.arreola@lacity.org

**METRO STRUCTURAL
PLAN CHECK**
TIM WANG
Sr Structural Engineer
(213) 978-4454
tienjen.wang@lacity.org

**METRO STRUCTURAL
PLAN CHECK**
DAVID CHANG
Sr Structural Engineer
(213) 482-0432
david.chang@lacity.org

DISABLED ACCESS
FARUK SEZER
Bldg Civil Engr I
(213) 482-0093
faruk.sezer@lacity.org

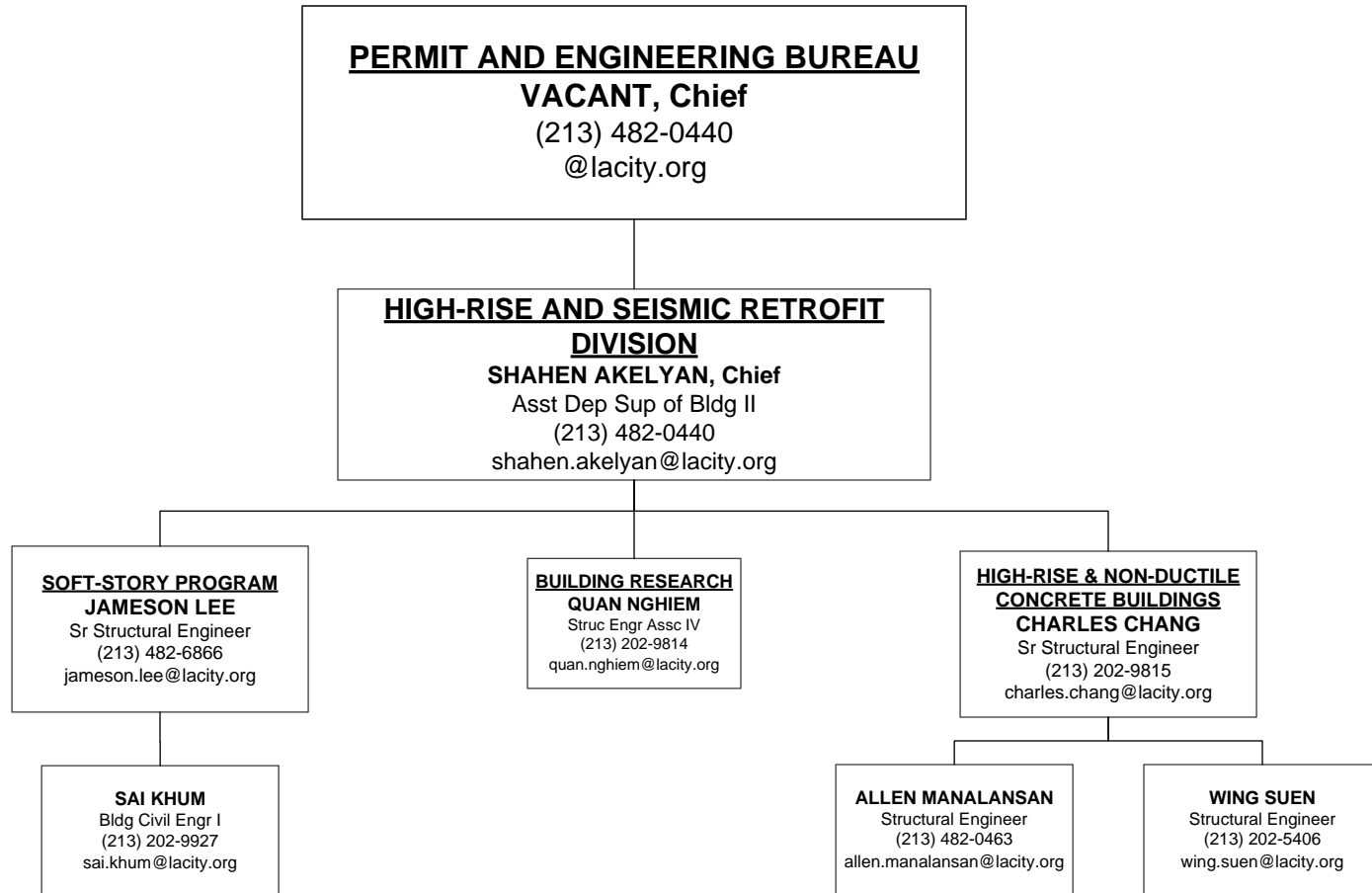
**VAN NUYS STRUCTURAL
PLAN CHECK**
TAMMY SVETICH
Bldg Civil Engr II
(818) 374-4373
tamera.svetich@lacity.org

STEVEN KIM
Bldg Civil Engr I
(818) 374-4325
steven.kim@lacity.org

**WEST LA STRUCTURAL
PLAN CHECK**
JASON HEALEY
Bldg Civil Engr I
(310) 575-8080
jason.healey@lacity.org

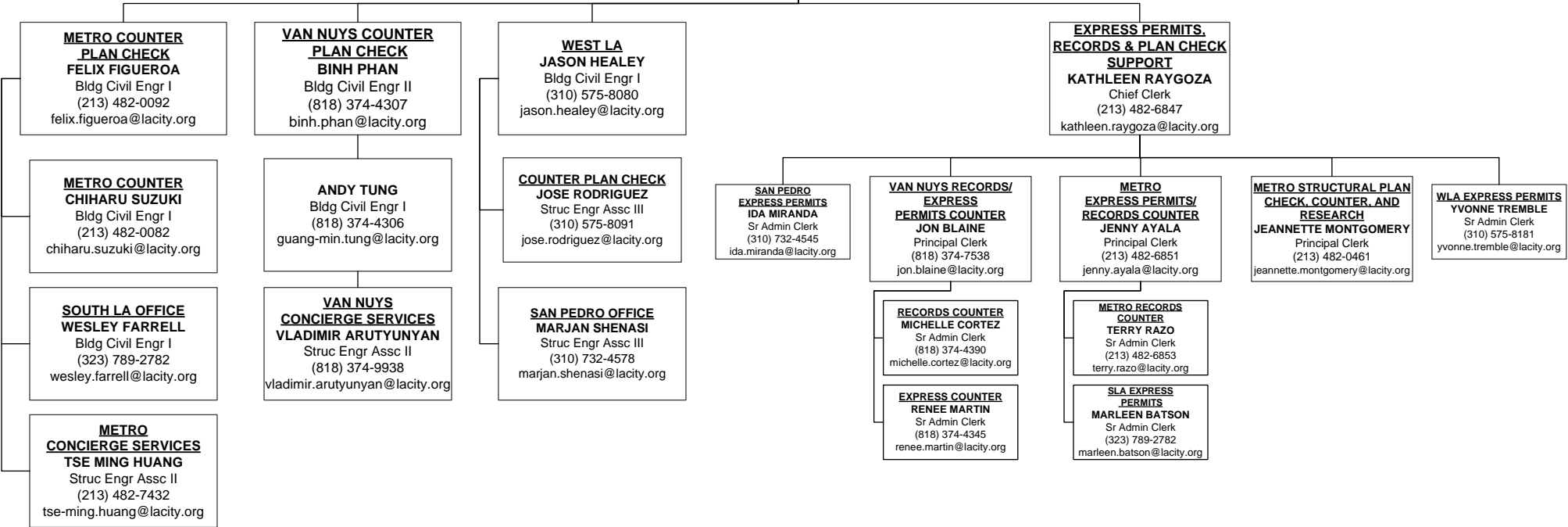
KAMRAN RAVANDI
Struc Engr Assc IV
(310) 575-8064
kamran.ravandi@lacity.org

**SAN PEDRO
MARJAN SHENASI**
Struc Engr Assc III
(310) 732-4578
marjan.shenasi@lacity.org



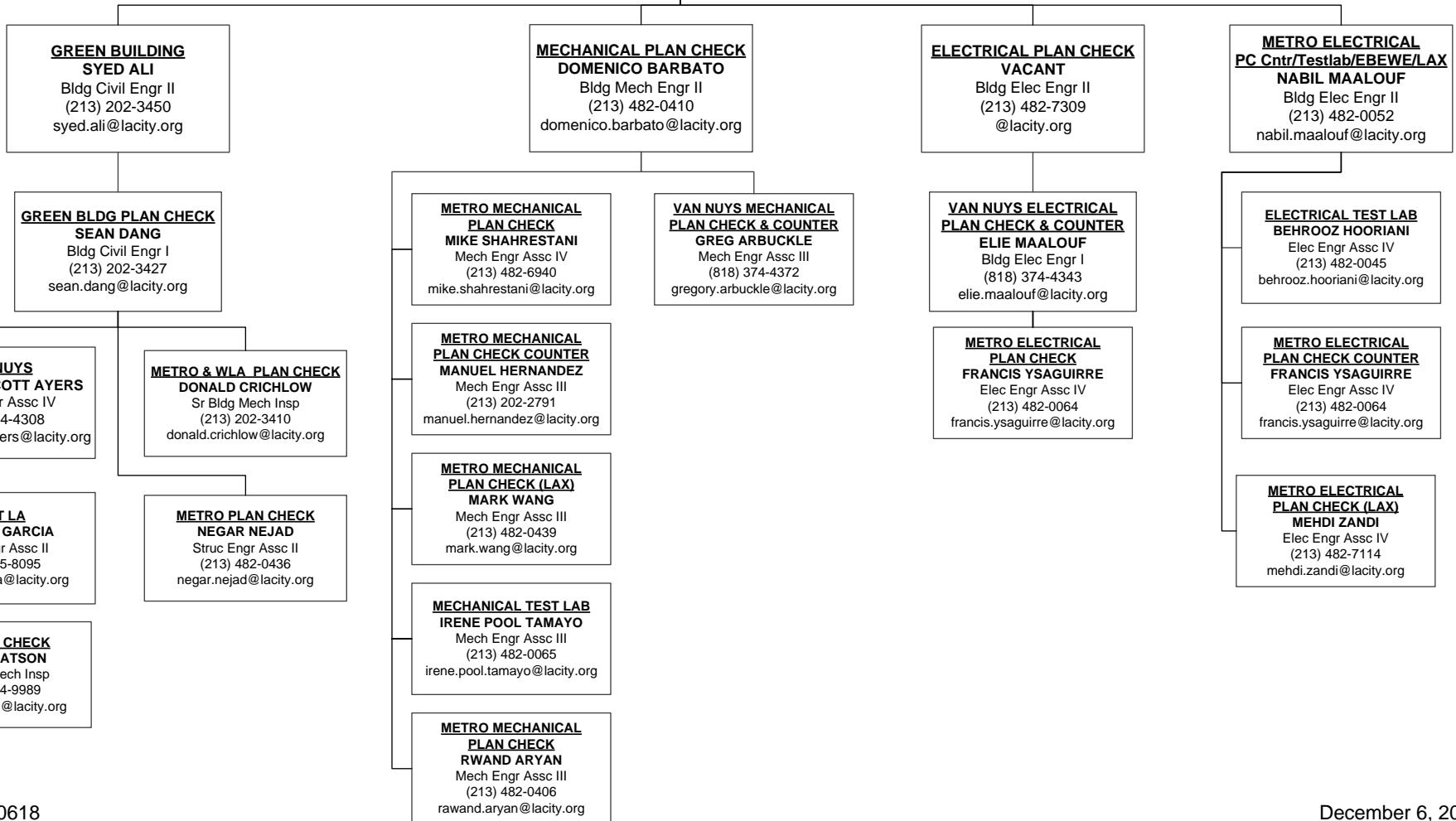
PERMIT AND ENGINEERING BUREAU
VACANT, Chief
 (213) 482-0440
 @lacity.org

STRUCTURAL PLAN CHECK COUNTER DIVISION
ARA SARGSYAN, Chief
 Asst Dep Sup of Bldg II
 (213) 482-0440
 ara.sargsyan@lacity.org



PERMIT AND ENGINEERING BUREAU
VACANT, Chief
 (213) 482-0440
 @lacity.org

GREEN, ELECTRICAL & MECHANICAL DIVISION
ADEL SALAH EDDINE
 Asst Dep Sup of Bldg II
 (213) 482-0053
 adel.salah-eddine@lacity.org



INSPECTION BUREAU
PASCAL CHALLITA, Chief
 (213) 482-6712
 pascal.challita@lacity.org
JOHN WEIGHT, Assistant Chief
 (213) 482-0342
 john.weight@lacity.org

BUILDING INSPECTION/INSPECTION CASE MANAGEMENT (ICM)/ RESTAURANT & SMALL BUSINESS EXPRESS PROGRAM (RSBEP)
JAMES GARRISON
 Chief Inspector
 (213) 482-0492
 jim.garrison@lacity.org

ELEVATOR/PRESSURE VESSEL INSPECTION
KIM ARTHUR
 Chief Inspector/Alternate Public Information Officer
 (213) 202-3467
 kim.arther@lacity.org

MATERIALS CONTROL
LISA YANCEY
 Principal Inspector
 (213) 482-7097
 lisa.yancey@lacity.org

METRO
RICKEY JACKSON
 Principal Inspector
 (213) 202-9863
 rickey.jackson@lacity.org

ELEVATOR INSPECTION
LARRY ISIDRO
 Principal Inspector
 (213) 202-9830
 larry.isidro@lacity.org

SPECIAL EVENTS/TENT INSPECTIONS
DOUG DEVINE
 Sr Build Inspector
 (213) 482-9585
 doug.devine@lacity.org

VAN NUYS
ANDREW CROMER
 Principal Inspector
 (818) 374-1104
 andrew.cromer@lacity.org

ELEVATOR INSPECTION METRO
DAVID JENNINGS
 Sr Safety Eng Elev
 (213) 202-9832
 david.jennings@lacity.org

PRESSURE VESSEL INSPECTION CODE DESK METRO
CIRILO REYES
 Sr Safety Eng Press Ves
 (213) 202-9852
 cirilo.reyes@lacity.org

METRO/VN/WLA/SP INVESTIGATIONS
RICK RODRIGUEZ
 Sr Build Inspector
 (213) 482-0345
 rick.rodriguez@lacity.org

WEST LA
HENRY BAGHDASSARIAN
 Principal Inspector
 (310) 914-3905
 henry.baghdassarian@lacity.org

ELEVATOR INSPECTION VN
FREDERICK LU
 Sr Safety Eng Elev
 (818) 374-1139
 frederick.lu@lacity.org

PRESSURE VESSEL INSPECTION CODE DESK VN
ROBERT YOON
 Sr Safety Eng Press Ves
 (818) 374-1149
 robert.yoon@lacity.org

CERTIFIED LICENSED CONTRACTOR (CLC)
DOUG DEVINE
 Sr Building Inspector
 (213) 202-5416
 doug.devine@lacity.org

SAN PEDRO
NICK LAROCCA
 Sr Build Inspector
 (310) 732-4552
 nick.larocca@lacity.org

ELEVATOR INSPECTION WLA
RICHARD OKE
 Sr Safety Eng Elev
 (310) 914-3967
 richard.oke@lacity.org

PRESSURE VESSEL INSPECTION CODE DESK WLA
RENATO FABIAN
 Sr Safety Eng Press Ves
 (310) 914-3973
 renato.fabian@lacity.org

HIGH RISE RETROFIT/ EQ INSPECTION
RICK RODRIGUEZ
 Sr Build Inspector
 (213) 482-0345
 rick.rodriguez@lacity.org

LAX
TIM GRIFFITH
 Sr Build Inspector
 (213) 473-2153
 tim.griffith@lacity.org

ELEVATOR CODE INFORMATION & APPOINTMENTS
 (213) 202-9844
 Fax (213) 202-9922

SOFT STORY INSPECTION
DAVID TSAU
 Sr Build Inspector
 (213) 482-0309
 david.tsau@lacity.org

RSBEP/ICM ADMIN SUPPORT
TATIA WADE
 Administrative Clerk
 (213) 482-0464
 tatia.wade@lacity.org

TRADE LICENSING SECTION
JACKIE GOMEZ
 Principal Clerk
 (213) 482-0330
 jackie.gomez@lacity.org

INSPECTION BUREAU
PASCAL CHALLITA, Chief
 (213) 482-6712
 pascal.challita@lacity.org
JOHN WEIGHT, Assistant Chief
 (213) 482-0342
 john.weight@lacity.org

**PLUMBING/HEATING AND
 FIRE SPRINKLER INSPECTION**
DENVER (SHAWN) HARGIS
 Chief Inspector
 (213) 482-6787
 denver.hargis@lacity.org

ELECTRICAL INSPECTION
MICHAEL PACKARD
 Chief Inspector
 (213) 202-9906
 michael.packard@lacity.org

**PLUMBING/HEATING/FIRE
 SPRINKLER INSPECTION**
MARK CASEY
 Principal Inspector
 (213) 482-0354
 mark.casey@lacity.org

ELECTRICAL INSPECTION
WILLIAM (BILL) MITCHELL
 Principal Inspector
 (213) 482-0377
 william.mitchell@lacity.org

METRO
PRESTON GILLIARD, Sr Plumbing
 (213) 482-0420 – preston.gilliard@lacity.org
STEVEN KIMBLE, Sr Fire Sprinkler
 (213) 202-9885 – steven.kimble@lacity.org
VICENTE VARGAS, Sr HVAC
 (213) 202-5614 – vicente.vargas@lacity.org

VAN NUYS
CORNELL EWELL, Sr Plumbing
 (818) 374-1154 – cornell.ewell@lacity.org
JOSEPH TAYLOR, Sr Fire Sprinkler
 (818) 374-1142 – joseph.taylor@lacity.org
KEVIN BROWN, Sr HVAC
 (818) 374-1153 – kevin.brown@lacity.org

METRO
JOHNNY YUTRONICH
 Sr Electrical Inspector
 (213) 202-3176
 johnny.yutronich@lacity.org

VAN NUYS
DOUG VERRAL
 Sr Electrical Inspector
 (818) 374-1136
 douglas.verral@lacity.org

WEST LA
JIM EMPERO, Sr Plumbing
 (310) 914-3949 – james.empero@lacity.org
JOHN BARTON, Sr Fire Sprinkler
 (310) 914-3955 – john.barton@lacity.org
CHRISTOPHER NORRIS, Sr HVAC
 (310) 914-3961 – christopher.norris@lacity.org

SAN PEDRO
MICHAEL LUNG
 Plumbing Inspector
 (310) 732-4546
 michael.lung@lacity.org

WEST LA
JOHN DESPARD
 Sr Electrical Inspector
 (310) 914-3942
 john.despard@lacity.org

SAN PEDRO
WON LEE
 Sr Electrical Inspector
 (310) 732-4549
 won.lee@lacity.org

LAX
KARIN IZUMI, Sr Fire Sprinkler
 (213) 473-2143 – karin.izumi@lacity.org
DEXTER JACKSON, Sr Plumbing
 (213) 473-2151 – dexter.jackson@lacity.org
KEVIN KIDD, Sr HVAC
 (213) 473-2142 – kevin.kidd@lacity.org

LAX
ERIC BANE
 Sr Electrical Inspector
 (310)473-2150
 eric.bane@lacity.org

ELECTRICAL CODE INFORMATION
VACANT
 Sr Electrical Inspector
 (213) 482-0057
 @lacity.org

PLUMBING CODE INFORMATION
 (213) 482-0061
 Fax (213) 482-7410

INSPECTION BUREAU
PASCAL CHALLITA, Chief
 (213) 482-6712
 pascal.challita@lacity.org
ERIC JAKEMAN, Assistant Chief
 (213) 202-9869
 eric.jakeman@lacity.org

RESIDENTIAL INSPECTION
JACK CONGER
 Chief Inspector
 (213) 202-3469
 jack.conger@lacity.org

GRADING
J. ADOLFO ACOSTA
 Geotechnical Engineer III
 (213) 482-6967
 jesus.acosta@lacity.org

TRAINING AND EMERGENCY MANAGEMENT
JEFF NAPIER
 Chief Inspector/Public Info Officer
 (213) 202-5410
 jeff.napier@lacity.org

METRO
RONALD (DEVIN) MYRICK
 Principal Inspector
 (213) 482-0323
 ronald.myrick@lacity.org

VAN NUYS
MICHAEL SMITH
 Principal Inspector
 (818) 374-1155
 michael.smith@lacity.org

WLA/San Pedro
STEVE COTTON
 Principal Inspector
 (310) 914-3904
 vincent.cotton@lacity.org

GRADING INSPECTION
YERVAND CHAPANYAN
 Principal Inspector
 (213) 482-0397
 yervand.chapanyan@lacity.org

GEOTECHNICAL ENGINEERING
DANIEL SCHNEIDERREIT
 Engineering Geologist II
 (213) 482-0430
 daniel.schneiderreit@lacity.org

TRAINING

EMERG MGMT

CD #1 & #14
DOMENIC DANERI
 Sr Build Mech Inspector
 (213) 202-3418
 domenic.daneri@lacity.org
RUBEN SALAS
 Sr Build Mech Inspector
 ruben.salas@lacity.org

CD #2
 6262 Van Nuys Blvd.
TONY GIANNINI
 Sr Build Mech Inspector
 (818) 374-1159
 anthony.giannini@lacity.org

CD #5A
 11620 Wilshire Blvd. #1100
MATT KELLERMAN
 Sr Build Mech Inspector
 (310) 914-3908
 matt.kellerman@lacity.org

METRO
PATRICK MISCHLICH
 Sr Build Inspector
 (213) 482-0396
 pat.mischlich@lacity.org

GRADING PLAN CHECK
FRED WONG
 Struc Engr Assc IV
 (213) 482-0491
 fred.wong@lacity.org

ELECTRICAL
ED MITCHELL
 Sr Electrical Inspector
 (213) 482-6797
 edward.mitchell@lacity.org

ED GARCIA
 Sr Build Mech Inspector
 (213) 482-6786
 edward.garcia@lacity.org

CD #4
 221 N. Figueroa, 8th Fl.
ROBERT MINASSIANS
 Sr Build Mech Inspector
 (213) 202-3431
 robert.minassians@lacity.org

CD #3
 19040 Vanowen St.
JOHN JANSON
 Sr Build Mech Inspector
 (818) 774-4335
 john.janson@lacity.org

CD #11
 11620 Wilshire Blvd. #1100
DANIEL ORRANTE
 Sr Build Mech Inspector
 (310) 914-3906
 daniel.orrante@lacity.org

VAN NUYS INSPECTION
GAYK MANUKYAN
 Sr Build Mech Inspector
 (818) 374-4355
 gayk.manukyan@lacity.org

HVAC
MATTHEW NUCKOLLS
 Building Mech Inspector
 (213) 482-6795
 matthew.nuckolls@lacity.org

JEANEAN BARAJAS
 Training Coordinator
 Management Analyst
 (213) 482-6788
 jeanean.barajas@lacity.org

CD #5C
 221 N. Figueroa, 8th Fl.
BOB BLAND
 Sr Build Mech Inspector
 (213) 202-3445
 elmer.bland@lacity.org

CD #5B
 6262 Van Nuys Blvd
BOBBY SHELLY
 Sr Build Mech Inspector
 (818) 374-1157
 bobby.shelly@lacity.org

CD #5D
 11620 Wilshire Blvd. #1100
MICHAEL TEMPLE
 Sr Build Mech Inspector
 (310) 914-3907
 michael.temple@lacity.org

WEST LA INSPECTION
SERGIO VALENZUELA
 Sr Build Inspector
 (310) 914-3934
 sergio.valenzuela@lacity.org

BUILDING
MARK BEVELAQUA
 Sr Build Inspector
 (213) 482-0386
 mark.bevelaqua@lacity.org

CD #8 & #9
 221 N. Figueroa, 8th Fl.
BOB DUNN
 Sr Build Mech Inspector
 (213) 202-3211
 bob.dunn@lacity.org

CD #7
 6262 Van Nuys Blvd.
PIERRE VEGA
 Sr Build Mech Inspector
 (818) 374-1158
 pierre.vega@lacity.org

CD #11B
 11620 Wilshire Blvd. #1100
CRAIG DAVIS
 Sr Build Mech Inspector
 (310) 914-3909
 craig.davis@lacity.org

SAN PEDRO INSPECTION
SERGIO VALENZUELA
 Sr Building Inspector
 (310) 914-3934
 sergio.valenzuela@lacity.org

PLUMBING
BRANDON IVES
 Plumbing Inspector
 (213) 202-9892
 brandon.ives@lacity.org

CD #13
 221 N. Figueroa, 8th Fl.
CHARLES BOGHOSKHAN
 Sr Build Mech Inspector
 (213) 202-3261
 charles.boghoskhan@lacity.org

CD #12 & TRACKS
 19040 Vanowen St
DON SUNSERI
 Sr Build Mech Inspector
 (818) 774-4334
 donald.sunseri@lacity.org

CD #15
 638 S. Beacon St.
PAUL BECKER
 Sr Build Mech Inspector
 (310) 732-4558
 paul.becker@lacity.org

RESIDENTIAL/ZONING VACANT
 Sr Build Mech Inspector
 (213) 482-7278
 @lacity.org

METRO TRACKS
MIKE FAUNCE
 Sr Build Mech Inspector
 (213) 202-3122
 michael.faunce@lacity.org

CODE ENFORCEMENT BUREAU

JOHN BIEZINS, Chief

(213) 252-3902

john.biezins@lacity.org

FRANK LARA, Assistant Chief

(213) 252-3310

frank.lara@lacity.org

FAITH MAULUPE
Principal Clerk
(213) 252-3376
faith.maulupe@lacity.org

GENERAL ENFORCEMENT & SPECIALTY/SIGNS INSPECTION

JOHN WHIPPLE

Chief Inspector
(213) 252-3040

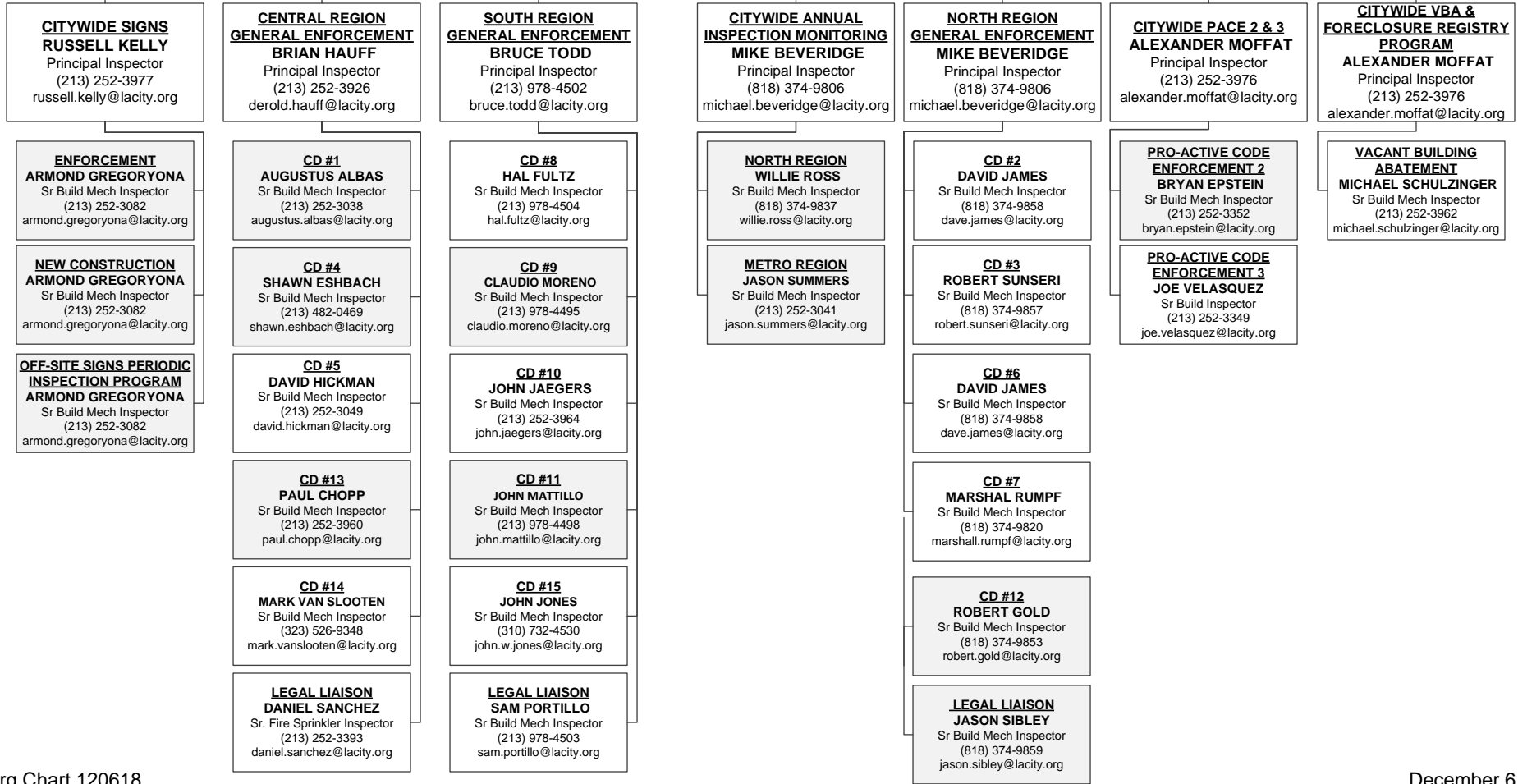
john.whipple@lacity.org

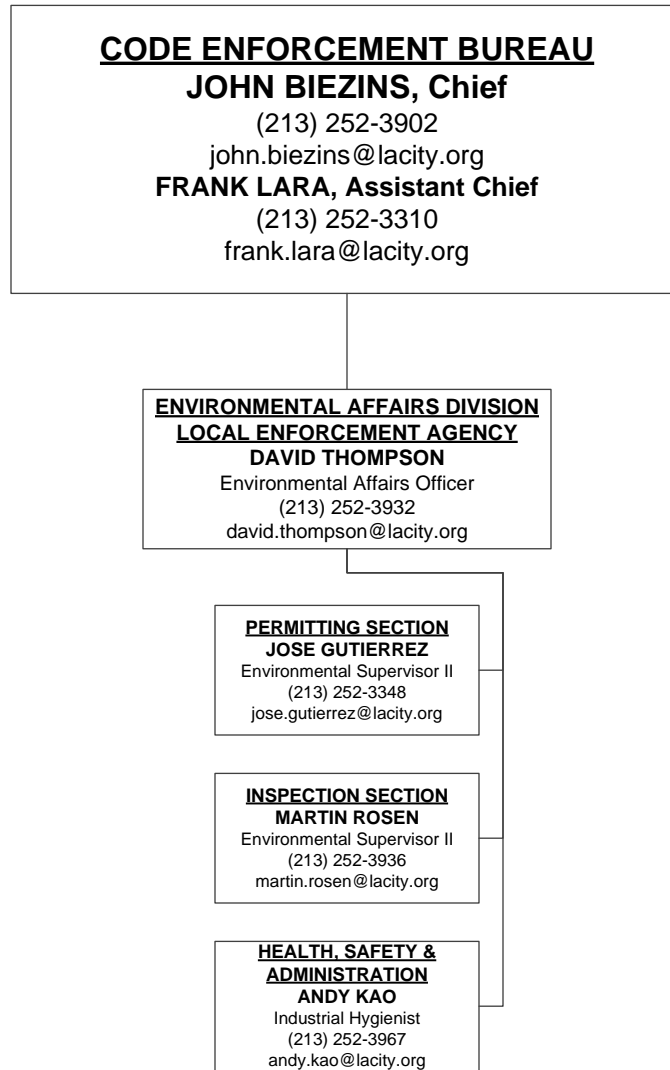
GENERAL ENFORCEMENT, ANNUAL INSPECTION MONITORING, PROACTIVE CODE ENFORCEMENT, & VACANT BUILDING ABATEMENT

ANDREW LONGORIA

Chief Inspector
(213) 252-3931

andrew.longoria@lacity.org





RESOURCE MANAGEMENT BUREAU
STEVE ONGELE, Chief
 (213) 482-6703
 steve.ongele@lacity.org
ANA MAE YUTAN, Assistant Chief
 Chief Mgmt Analyst
 (213) 482-6782
 anamae.yutan@lacity.org

ADMINISTRATIVE SERVICES DIVISION
ZACHARY DE CORSE
 Sr Mgmt Analyst II
 (213) 482-6746
 zachary.decorse@lacity.org

FINANCIAL SERVICES DIVISION
CYNTHIA KHO
 Dept Chief Accountant III
 (213) 482-6815
 cynthia.kho@lacity.org

RISK & RECORDS MANAGEMENT DIVISION
TERESA ABRAHAM
 Sr Mgmt Analyst II
 (213) 482-6766
 teresa.abraham@lacity.org

PURCHASING SUPERVISOR, FACILITIES MANAGEMENT, AND FORMS CONTROL
SOMAPUN PONGQUAN
 Sr Mgmt Analyst I
 (213) 482-6748
 somapun.pongquan@lacity.org

CHRISTINA TABIRARA
 Principal Accountant II
 (213) 482-6804
 christina.tabirara@lacity.org

CASHIERING SERVICES
VICTORIA VASQUEZ
 Chief Cashier
 (213) 482-6953
 mariavictoria.vasquez@lacity.org

CUSTODIAN OF RECORDS
HAZEL HARRIS
 Management Analyst II
 (213) 482-6765
 hazel.harris@lacity.org

CONTRACT AND GRANT ADMINISTRATOR, COMMUNICATION SERVICES, REPORTS MANAGER, AND TRAVEL COORDINATOR
CHRISTINE WAI
 Sr Mgmt Analyst I
 (213) 482-6740
 christine.wai@lacity.org

ACCOUNTS PAYABLE
EMILY HU
 Sr Accountant I
 (213) 482-6534
 emily.hu@lacity.org

PRECY SANCHEZ
 Accounting Rec Supvr I
 (213) 482-6955
 precy.sanchez@lacity.org

DATA AND RECORDS MANAGEMENT
VICTORIA LIRA
 Chief Clerk
 (213) 482-6757
 victoria.lira@lacity.org

SIB PROCESSING, DATA SUBSCRIPTIONS & CLERICAL SUPPORT
QUYEN TU
 Acting Sr Admin Clerk
 (213) 482-6710
 quyen.tu@lacity.org

SUPPLIES
JOHN BOROUGH
 Store Keeper II
 (213) 482-6813
 john.borough@lacity.org

TONY PELAEZ
 Sr Mgmt Analyst II
 (213) 482-6816
 tony.pelaez@lacity.org

IDIS & SUBJECT SPECIALTY CALL GROUP
CHAUNTEL MARTIN
 Principal Clerk
 (213) 482-6560
 chauntel.martin@lacity.org

PAYROLL AND FUND ADMIN
EMMA PANGILINAN
 Sr Accountant I
 (213) 482-7347
 emma.pangilinan@lacity.org

LIENS
CHARLES KALIBBALA
 Sr Accountant I
 (213) 202-9829
 charles.kalibbala@lacity.org

SUBJECT SPECIALTY CALL GROUP
LORENA ESPINOZA
 Sr Admin Clerk
 (213) 482-6549
 lorena.espinosa@lacity.org

